



COLUMBUS
REGIONAL AIRPORT AUTHORITY



2022 Complaints and Operations Annual Report

CMH

Introduction

The Columbus Regional Airport Authority (CRAA) owns and operates John Glenn Columbus International (CMH), Rickenbacker International (LCK) and Bolton Field (TZR) airports. CRAA and its partners all share a commitment to the local community in our mission, connecting Ohio to the world. CRAA is a key stakeholder in aircraft noise mitigation. CRAA responds to noise complaints, monitors and tracks noise trends, conducts FAA approved noise compatibility studies, and works with other stakeholders including the FAA, airlines, and local and regional legislators.

The purpose of this report is to summarize the 2022 noise complaints and operations-related statistics for all three CRAA airports. Data from previous years is provided throughout the report in order to provide a historical perspective of noise complaints and operations levels at each airport.

Noise complaints may be submitted online here;

<https://complaint-us.emsbk.com/cmh4>

Please contact noiseabatementoffice@columbusairports.com with any questions or concerns regarding noise reduction at any of CRAA's three airports.

CRAA 2022 Total Operations and Noise Complaints Increase in 2022

Total noise complaints at all three airports increased by 27 percent from 2021 and total aircraft operations at all three airports increased by 13 percent. With the ease and accuracy of online noise complaints which became the primary method to submit complaints in 2022, has increased complaints more than any other year historically. The majority of these complaints coming from frequent complainants.

John Glenn International saw an increase of 32 percent in noise complaints and a 16 percent increase in total operations from 2021 to 2022. Rickenbacker International noise complaints increased by 17 percent while operations decreased by approx. 5 percent. Bolton field had a decrease of noise complaints (54 percent) while largely increasing operations (30 percent).

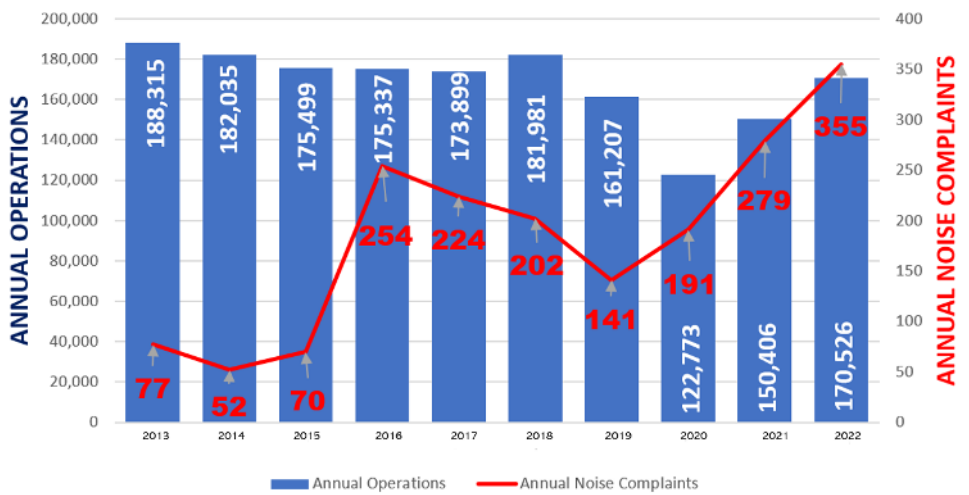
10-year Combined averages for all CRAA airports

166,418 Operations 185 Complaints

10-year Combined totals for all CRAA airports

1,664,186 Operations 1,845 Complaints

Columbus Regional Airport Authority
TOTAL ANNUAL OPERATIONS & NOISE COMPLAINTS
2013-2022

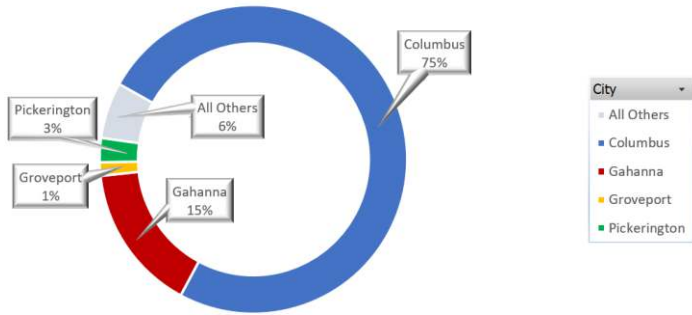


CRAA 2022 Noise Complaint Locations

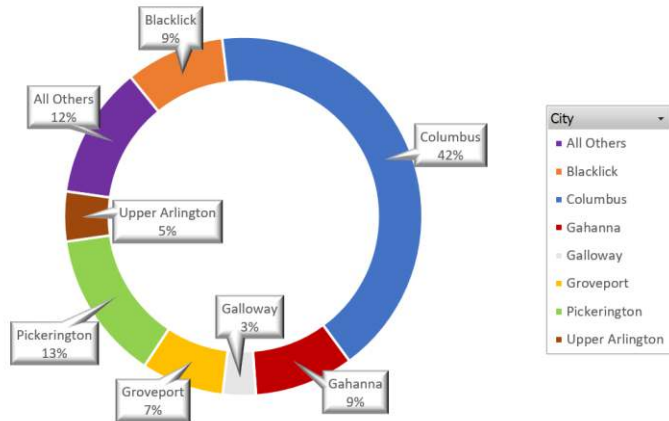
The majority of CRAA noise complaints come from frequent complainants. In 2022, Approx. 80% of all CRAA noise complaints came from frequent complainants (10 or more complaints/yr). Previous data has shown that the highest density of complaints comes from residents along the arrival and departure paths. The charts on the right, show both metrics for total complaints by city as well as complaints by city with frequent complainants removed. In both data sets, the city of Columbus has the most complaints.

The city of Gahanna and Blacklick have historically seen complaints due to proximity to the extended runway centerline for John Glenn International Airport. Groveport and Pickerington are the majority of complaints for Rickenbacker International Airport.

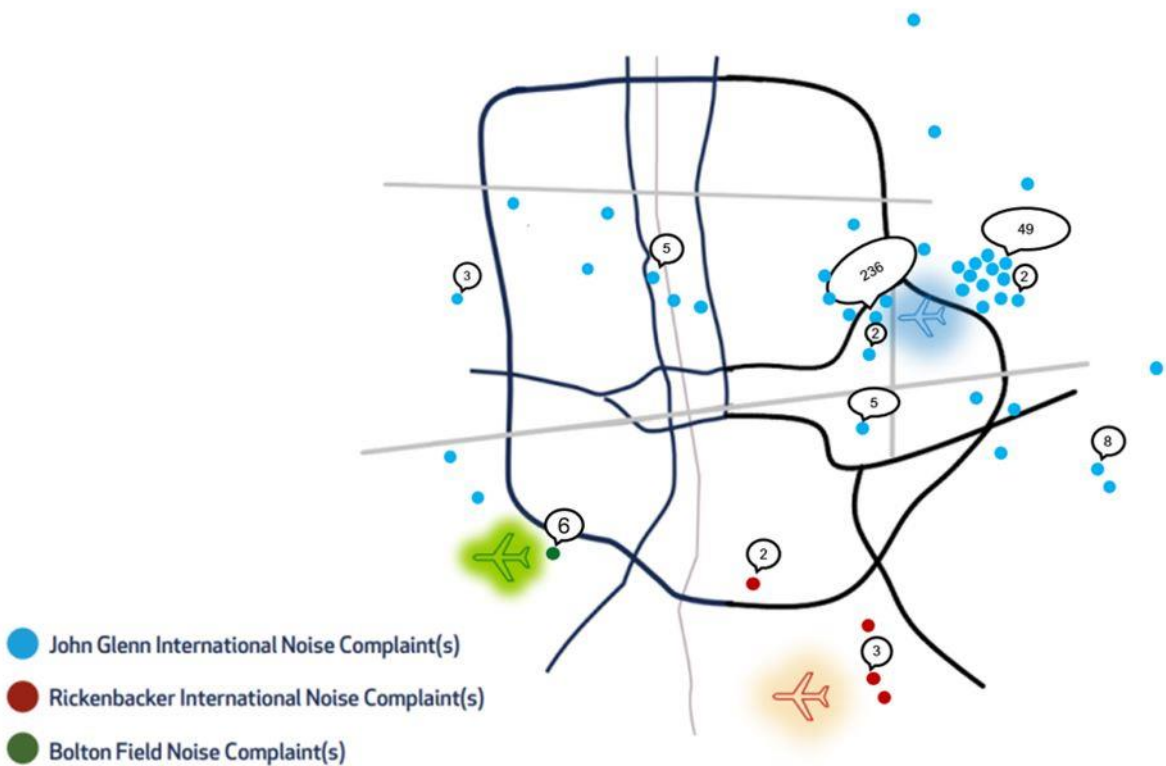
2022 Total Complaints by City



2022 Total Complaints by City (Frequent Complainants Removed)



The map below shows where all CRAA noise complaints have come from in 2022 and some of the number of complaints from frequent complainants.



John Glenn Columbus International Airport (CMH)

John Glenn International (CMH) had 7,455,031 total passengers in 2022, 113,886 total aircraft operations, and 342 noise complaints.

Noise complaints at John Glenn International have increased by 32 percent from 2021 while operations have increased by 16 percent from 2021. John Glenn noise complaints made up 96 percent of all CCAA owned airport noise complaints.

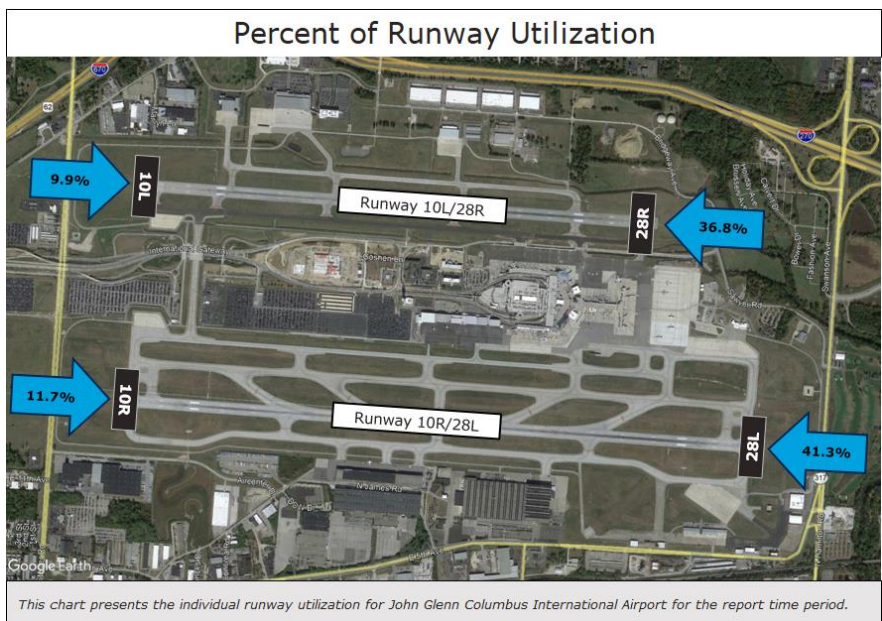
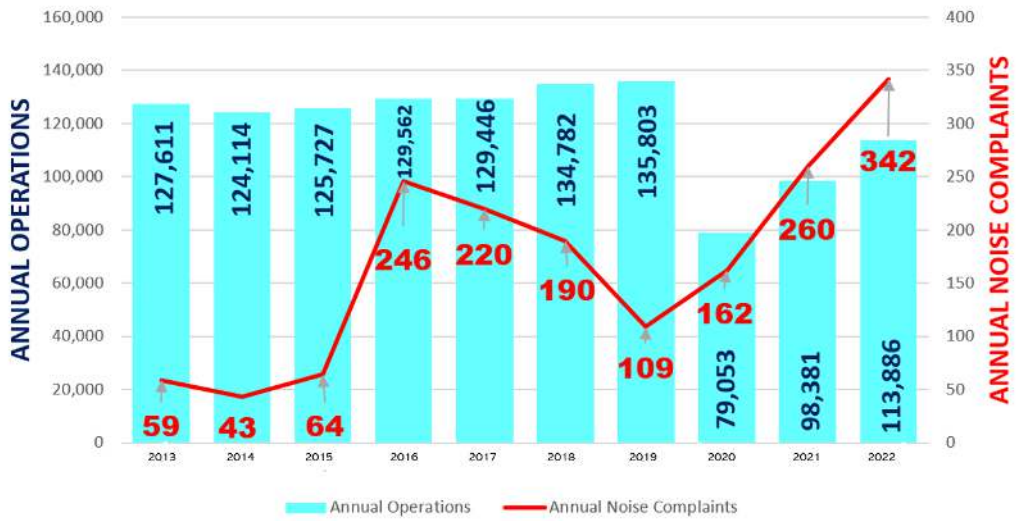
The City of Columbus comprises most of John Glenn Int'l (CMH) Noise Complaints. Gahanna and Blacklick are the two other cities with most complaints for CMH. This can be attributed to when CMH is in east flow and aircraft are taking off and landing to the east. The majority of the time CMH will be in west flow, taking off and landing to the west.

113,886 Operations 342 Complaints

32% Increase in Noise Complaints in 2022

16% Increase in Aircraft Operations

John Glenn International Airport
TOTAL ANNUAL OPERATIONS & NOISE COMPLAINTS
2013-2022



Rickenbacker International Airport (LCK)

Noise complaints at Rickenbacker International ((LCK) have increased by 17 percent in 2022 and total aircraft operations have decreased by 4.5 percent. The majority of noise complaints came from the city of Groveport with its proximity to the extended runway centerline for arrivals for its most used runways, runway 23L and runway 23R. Additionally, Groveport will experience noise from departures for runways 5L and 5R to the northeast.

Columbus, OH is the 14th largest city in the U.S. and with that comes demand for an efficient cargo hub. Rickenbacker International had a total of 225,453,783 lbs of total cargo. LCK had 293,000 passengers in 2022. LCK has historical data as having a low number of complaints relative to the number of operations when compared to John Glenn International

Rickenbacker International Airport
TOTAL ANNUAL OPERATIONS & NOISE COMPLAINTS
2013-2022



24,182 Operations 7 Complaints

17% Increase in Noise Complaints in 2022

- 4.5% Decrease in Aircraft Operations

Percent of Runway Utilization



This chart presents the individual runway utilization for Rickenbacker International Airport for the report time period.

Bolton Field Airport (TZR)

Noise complaints at Bolton Field Airport have decreased by 54 percent in 2022 and aircraft operations have increased to an all time high by 30 percent (32,458 operations). Most of Bolton Field Airports' complaints come from residents from the city of Columbus with frequent complainants within proximity to the airport.

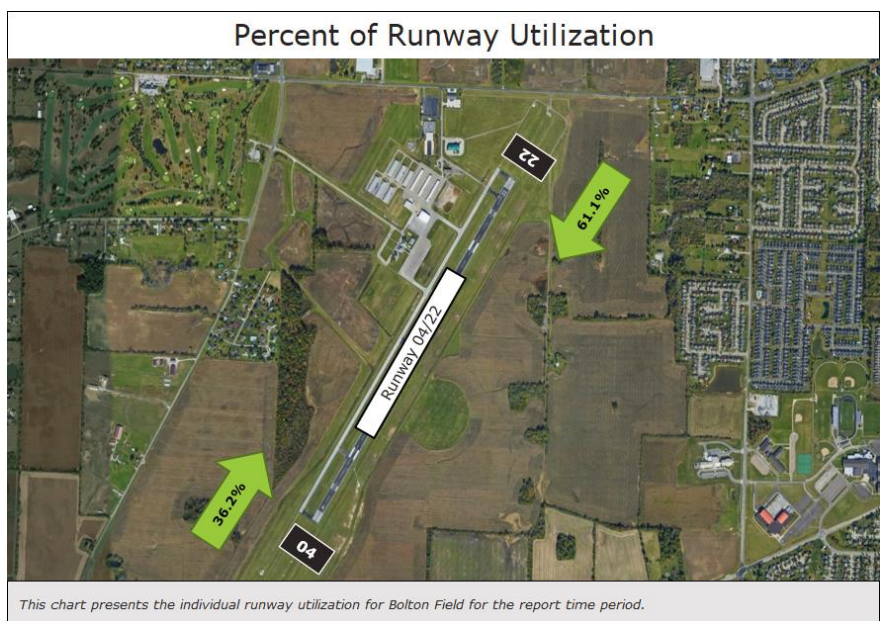
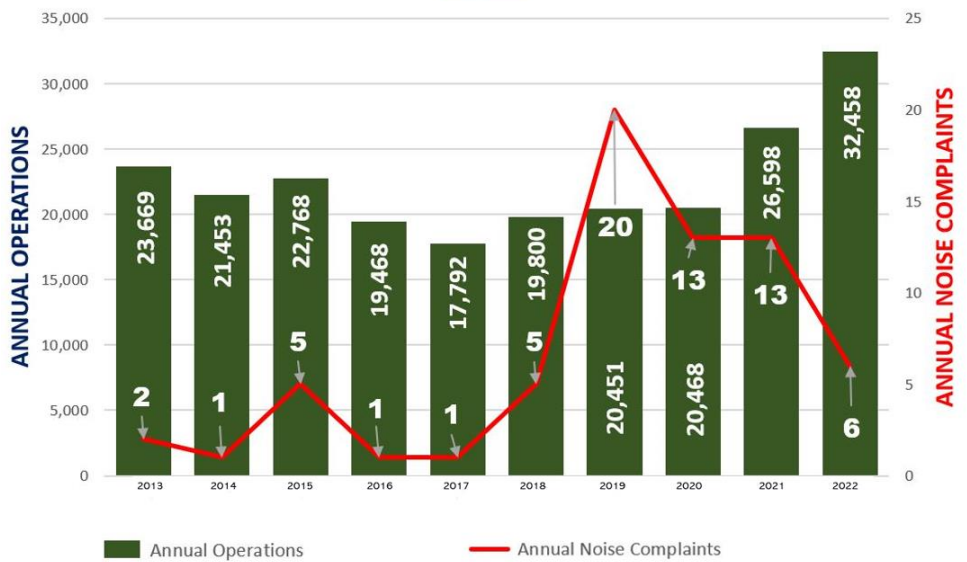
The majority of Bolton Field Airport complaints arise from police helicopters in the area. The airport is a small reliever airport dedicated to corporate and recreational aviation activities. Bolton Field serves the needs of area businesses, private pilots, aviation enthusiasts. Like LCK, the number of complaints is low compared with John Glenn International.

32,458 Operations
6 Complaints

-54% Decrease in Noise Complaints in 2022

30% Increase in Aircraft Operations

Bolton Field Airport
TOTAL ANNUAL OPERATIONS & NOISE COMPLAINTS
2013-2022

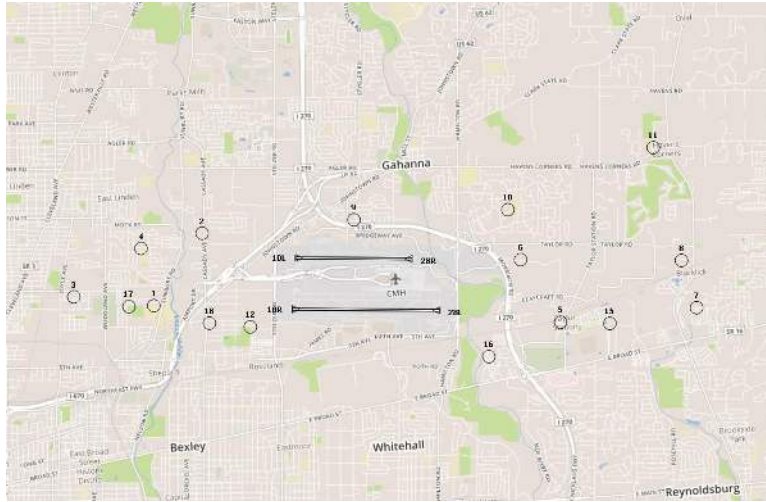


CRAA Noise Monitoring Terminals

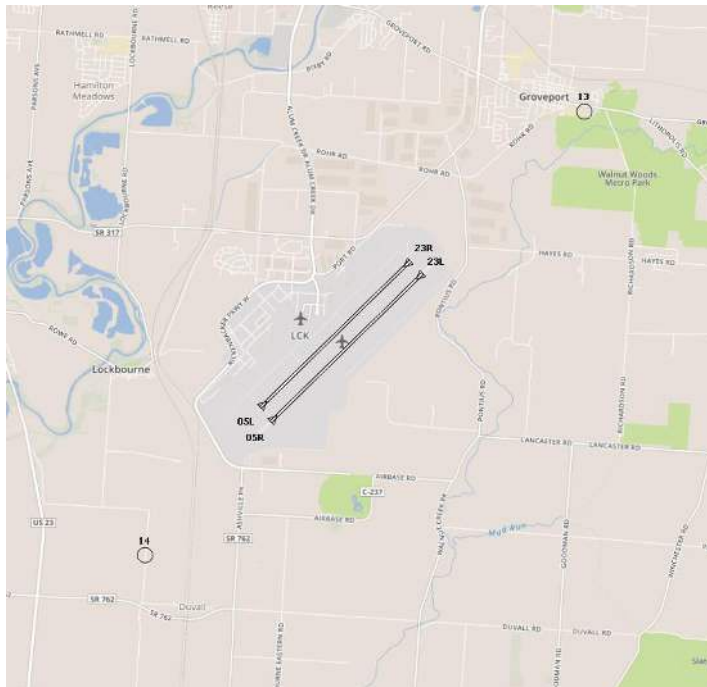
CRAA maintains 18 Noise Monitoring Terminals located throughout the City of Columbus and surrounding cities. Sixteen are located around John Glenn International and 2 adjacent to Rickenbacker International.

Noise monitoring terminals allow CRAA the ability to systematically and consistently measure, record, and track noise impacts. This FAA approved method reduces the subjective element in noise complaints when assessing overall data.

CMH Locations



LCK Locations



Submitting a Noise Complaint

Noise Complaints can be submitted online on the online portal, located here; <https://complaint-us.emsbk.com/cmh4> .

The noise complaint response team strives to provide the best available information regarding noise compatibility issues and will respond to every noise complaint that is submitted if a response is desired. For immediate results regarding specific aircraft operations, please visit CRAA's flight-tracking website at <https://webtrak.emsbk.com/cmh2> This web application provides the public with the opportunity to obtain aircraft radar and noise data on demand.

Please contact noiseabatementoffice@columbusairports.com with any questions or concerns regarding noise reduction at any of CRAA's three airports.

**For further questions or
comments regarding this
report, please contact:**

Matt DeCubellis
Coordinator | Airport Operations
Columbus Regional Airport Authority
mdecubellis@columbusairports.com