

Monthly Statistics Report

Report compiled from self-reported airline statistics

December 2024



COLUMBUS
REGIONAL AIRPORT AUTHORITY

JOHN GLENN COLUMBUS INTERNATIONAL AIRPORT

December 2024

PASSENGERS	
Airline	
Air Canada Express	
Alaska	
American	
Breeze	
Delta	
Frontier	
Southwest	
Spirit	
Sun Country	
United	
AIRLINES TOTALS	
CHARTER TOTALS	
AIRPORT TOTALS	

Total Passengers - Monthly				
Totals		Compared to 2023 (YOY)		
Dec 2024	Dec 2023	Actual Change	Percent Change	
-	2,685	-2,685	-100.0%	
8,967	8,140	827	10.2%	
174,827	145,591	29,236	20.1%	
10,041	5,999	4,042	67.4%	
131,017	116,369	14,648	12.6%	
6,314	12,197	-5,883	-48.2%	
244,512	234,722	9,790	4.2%	
54,680	55,159	-479	-0.9%	
712	-	712	-	
105,484	98,253	7,231	7.4%	
736,554	679,115	57,439	8.5%	
1,873	3,408	-1,535	-45.0%	
738,427	682,523	55,904	8.2%	

Total Passengers - Year to Date				
Totals		Compared to 2023 (YOY)		
YTD 2024	YTD 2023	Actual Change	Percent Change	
46,392	49,449	-3,057	-6.2%	
142,232	138,837	3,395	2.4%	
2,033,268	1,968,083	65,185	3.3%	
99,441	84,239	15,202	18.0%	
1,630,960	1,489,935	141,025	9.5%	
60,613	83,673	-23,060	-27.6%	
2,897,073	2,721,230	175,843	6.5%	
757,333	564,967	192,366	34.0%	
24,401	20,346	4,055	19.9%	
1,238,353	1,220,466	17,887	1.5%	
8,930,066	8,341,225	588,841	7.1%	
35,548	34,386	1,162	3.4%	
8,965,614	8,375,611	590,003	7.0%	

CARGO	
Airline	
Alaska	
American	
Delta	
Southwest	
United	
AIRLINES TOTALS	
CARGO AIRLINES TOTALS	
AIRPORT TOTALS	

Total Cargo (Freight and Mail) - Monthly				
Totals		Compared to 2023 (YOY)		
Dec 2024	Dec 2023	Actual Change	Percent Change	
5,033	25,360	-20,327	-80.2%	
29,384	37,234	-7,850	-21.1%	
120,383	112,489	7,894	7.0%	
485,561	462,570	22,991	5.0%	
47,430	91,660	-44,230	-48.3%	
687,791	729,313	-41,522	-5.7%	
240	217,432	-217,192	-99.9%	
688,031	946,745	-258,714	-27.3%	

Total Cargo (Freight and Mail) - Year-To-Date				
Totals		Compared to 2023 (YOY)		
YTD 2024	YTD 2023	Actual Change	Percent Change	
59,352	309,134	-249,782	-80.8%	
365,272	405,446	-40,174	-9.9%	
1,602,231	992,876	609,355	61.4%	
5,569,638	6,875,617	-1,305,979	-19.0%	
624,696	931,863	-307,167	-33.0%	
8,221,189	9,514,936	-1,293,747	-13.6%	
243,917	465,505	-221,588	-47.6%	
8,465,106	9,980,441	-1,515,335	-15.2%	

AIRCRAFT OPERATIONS	
Airline	
Air Canada Express	
Alaska	
American	
Breeze	
Delta	
Frontier	
Southwest	
Spirit	
Sun Country	
United	
AIRLINES TOTALS	
CHARTER TOTALS	
CARGO AIRLINES TOTALS	
AIRPORT TOTALS	

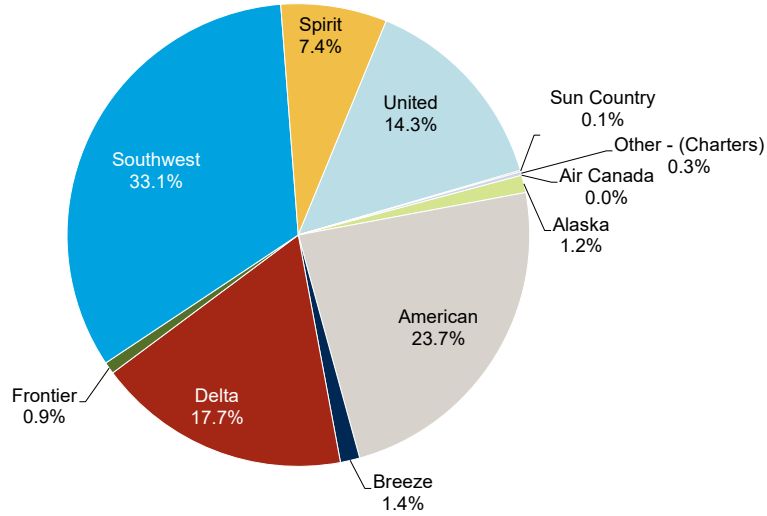
Actual Landing Operations - Monthly				
Totals		Compared to 2023 (YOY)		
Dec 2024	Dec 2023	Actual Change	Percent Change	
-	28	-28	-100.0%	
28	27	1	3.7%	
1,098	930	168	18.1%	
41	30	11	36.7%	
740	636	104	16.4%	
19	42	-23	-54.8%	
1,019	1,075	-56	-5.2%	
157	172	-15	-8.7%	
2	-	2	-	
633	563	70	12.4%	
3,737	3,503	234	6.7%	
80	78	2	2.6%	
4	21	-17	-81.0%	
3,821	3,602	219	6.1%	

Actual Landing Operations - Year to Date				
Totals		Compared to 2023 (YOY)		
YTD 2024	YTD 2023	Actual Change	Percent Change	
420	526	-106	-20.2%	
466	453	13	2.9%	
12,495	12,384	111	0.9%	
512	483	29	6.0%	
8,727	8,480	247	2.9%	
238	272	-34	-12.5%	
11,850	11,770	80	0.7%	
2,522	1,939	583	30.1%	
89	65	24	36.9%	
7,335	6,849	486	7.1%	
44,654	43,221	1,433	3.3%	
988	898	661	10.0%	
70	247	35	-71.7%	
45,712	44,366	1,346	3.0%	

JOHN GLENN COLUMBUS INTERNATIONAL AIRPORT

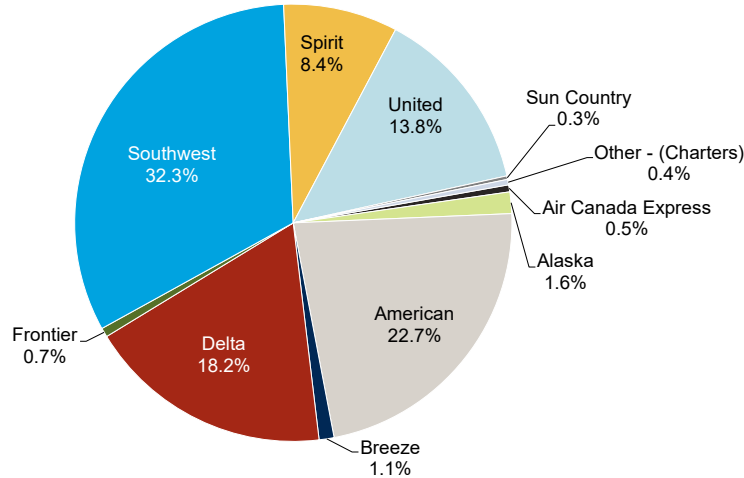
December 2024

Monthly by Passengers



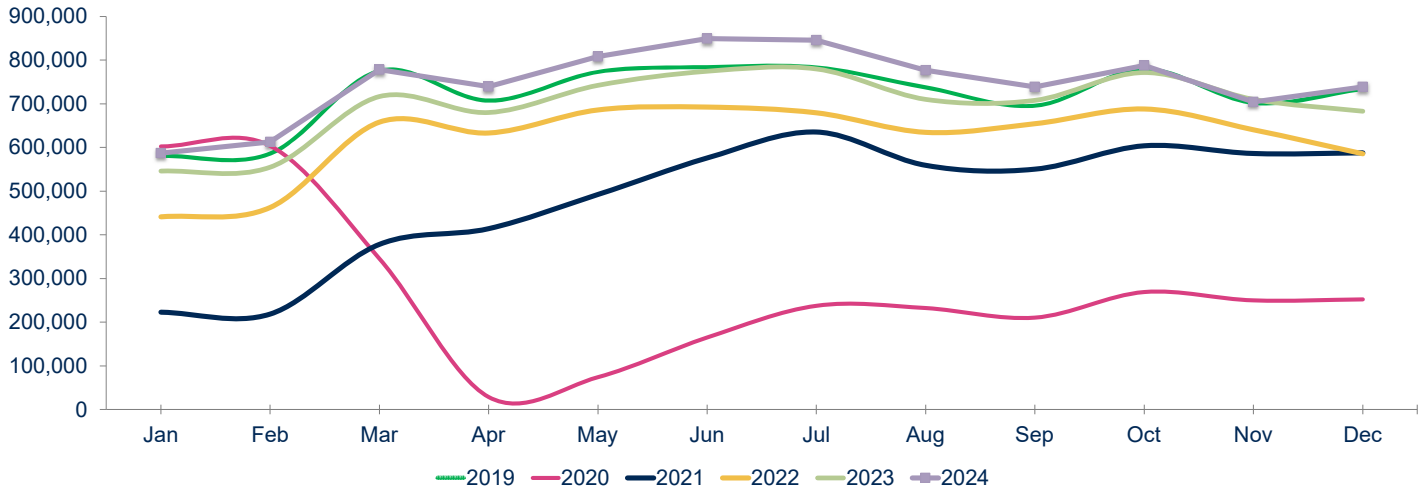
Notes:
Figures may not add up to 100% due to rounding

Year to Date by Passengers



Notes:
Figures may not add up to 100% due to rounding

Total Passengers



Year	Jan	Feb	Mar	Apr	May	Jun	Jul	Aug	Sep	Oct	Nov	Dec	Total	Growth
2019	580,704	586,025	775,533	707,185	772,991	783,831	783,122	737,440	695,409	779,088	702,070	733,710	8,637,108	6.1%
2020	602,022	603,467	345,418	28,943	73,769	164,700	237,756	232,096	210,233	268,914	249,522	252,287	3,269,127	-62.2%
2021	222,576	218,588	378,159	413,942	492,089	575,626	635,429	558,762	550,019	603,585	585,811	587,736	5,822,322	78.1%
2022	440,753	462,587	658,147	633,049	685,860	692,343	679,423	634,576	654,190	688,029	640,716	585,358	7,455,031	28.0%
2023	546,067	554,621	716,305	680,078	742,202	774,109	779,878	710,356	707,689	771,458	710,325	682,523	8,375,611	12.3%
2024	586,699	612,698	777,930	739,252	808,294	849,269	845,595	776,667	738,662	787,801	704,320	738,427	8,965,614	7.0%

24 vs 23: 7.4% 10.5% 8.6% 8.7% 8.9% 9.7% 8.4% 9.3% 4.4% 2.1% -0.8% 8.2% YE Peak Month

RICKENBACKER INTERNATIONAL AIRPORT

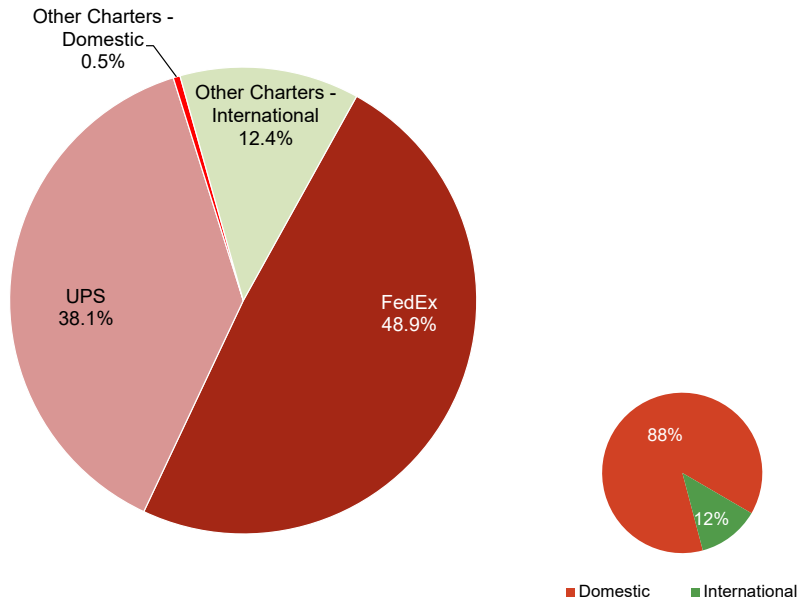
December 2024

RICKENBACKER INTERNATIONAL AIRPORT									
December 2024									
PASSENGERS		Total Passengers - Monthly				Total Passengers - Year to Date			
		Totals		Compared to 2023 (YOY)		Totals		Compared to 2023 (YOY)	
Airline		Dec 2024	Dec 2023	Actual Change	Percent Change	YTD 2024	YTD 2023	Actual Change	Percent Change
Allegiant Air		20,178	19,757	421	2.1%	283,020	295,679	-12,659	-4.3%
Miami Air		-	-	-	-	-	-	-	-
Sun Country		-	-	-	-	260	-	260	-
Other Charters		476	452	24	5.3%	1,497	1,480	17	1.1%
AIRPORT TOTALS		20,654	20,209	445	2.2%	284,777	297,159	-12,382	-4.2%
CARGO		Total Cargo (Freight and Mail) - Monthly				Total Cargo (Freight and Mail) - Year-To-Date			
		Totals		Compared to 2023 (YOY)		Totals		Compared to 2023 (YOY)	
Airline		Dec 2024	Dec 2023	Actual Change	Percent Change	YTD 2024	YTD 2023	Actual Change	Percent Change
AirBridgeCargo		-	-	-	-	-	-	-	-
Asiana		-	-	-	-	-	-	-	-
Cargolux		-	923,789	-923,789	-100.0%	499,274	12,668,279	-12,169,005	-96.1%
Cathay Pacific		-	-	0	-	-	1,543,117	-1,543,117	-100.0%
China Airlines		-	-	-	-	-	-	-	-
Emirates		-	761,934	-761,934	-100.0%	2,328,506	8,888,560	-6,560,054	-73.8%
Etihad		-	-	-	-	-	-	-	-
FedEx		3,276,505	6,003,205	-2,726,700	-45.4%	53,944,566	65,191,256	-11,246,690	-17.3%
Korean Air		-	-	-	-	-	-	-	-
UPS		2,553,877	2,667,413	-113,536	-4.3%	23,324,368	23,621,651	-297,283	-1.3%
Other Cargo Charters - Domestic		32,564	27,824	4,740	17.0%	672,607	2,511,205	-1,838,598	-73.2%
Other Cargo Charters - International		831,843	336,626	495,217	147.1%	9,325,000	14,137,061	-4,812,061	-34.0%
AIRPORT TOTALS		6,694,789	10,720,791	-4,026,002	-37.6%	90,094,321	128,561,129	-38,466,808	-29.9%
TOTAL DOMESTIC		5,862,946	8,698,442	-2,835,496	-32.6%	77,941,541	91,324,112	-13,382,571	-14.7%
TOTAL INTERNATIONAL		831,843	2,022,349	-1,190,506	-58.9%	12,152,780	37,237,017	-25,084,237	-67.4%
AIRPORT TOTALS		6,694,789	10,720,791	-4,026,002	-37.6%	90,094,321	128,561,129	-38,466,808	-29.9%
AIRCRAFT OPERATIONS		Actual Landing Operations - Monthly				Actual Landing Operations - Year to Date			
		Totals		Compared to 2023 (YOY)		Totals		Compared to 2023 (YOY)	
Airline		Dec 2024	Dec 2023	Actual Change	Percent Change	YTD 2024	YTD 2023	Actual Change	Percent Change
Allegiant Air		68	68	-	0.0%	941	982	-41	-4.2%
Miami Air		-	-	-	-	-	-	-	-
Sun Country		-	-	-	-	2	-	2	-
Other Charters		2	5	-3	-60.0%	9	12	-3	-25.0%
PASSENGER OPERATIONS TOTALS		70	73	-3	-4.1%	952	994	-42	-4.2%
AirBridgeCargo		-	-	-	-	-	-	-	-
Asiana		-	-	-	-	-	-	-	-
Cargolux		-	5	-5	-100.0%	5	88	-83	-94.3%
Cathay Pacific		-	-	-	-	-	43	-43	-100.0%
China Airlines		-	-	-	-	-	-	-	-
Emirates		-	4	-4	-100.0%	13	50	-37	-74.0%
Etihad		-	-	-	-	-	-	-	-
FedEx		58	120	-62	-51.7%	945	1,610	-665	-41.3%
Korean Air		-	-	-	-	-	-	-	-
UPS		37	37	-	0.0%	306	327	-21	-6.4%
Other Cargo Charters - Domestic		73	84	-11	-13.1%	902	1,111	-209	-18.8%
Other Cargo Charters - International		42	6	36	600.0%	261	251	10	4.0%
CARGO OPERATIONS TOTALS		210	256	-46	-18.0%	2,432	3,480	-1,048	-30.1%
AIRPORT TOTALS		280	329	-49	-14.9%	3,384	4,474	-1,090	-24.4%

RICKENBACKER INTERNATIONAL AIRPORT

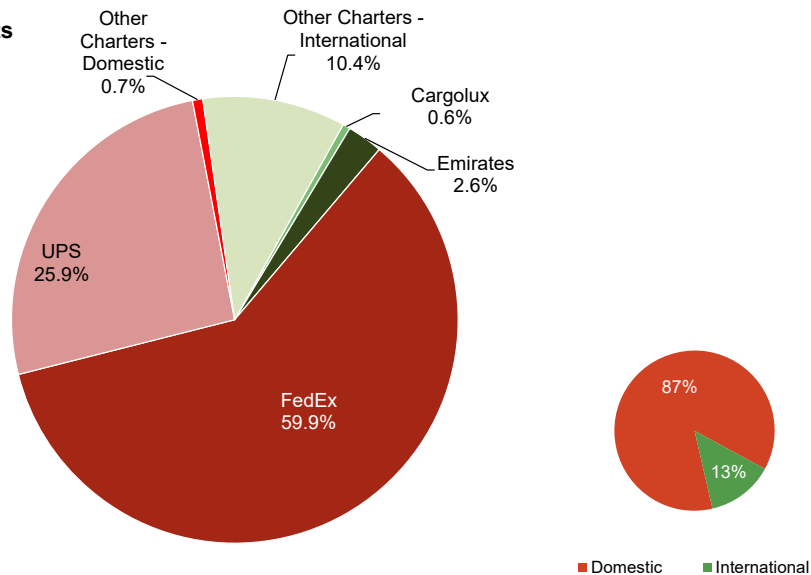
December 2024

Monthly Cargo by Weights



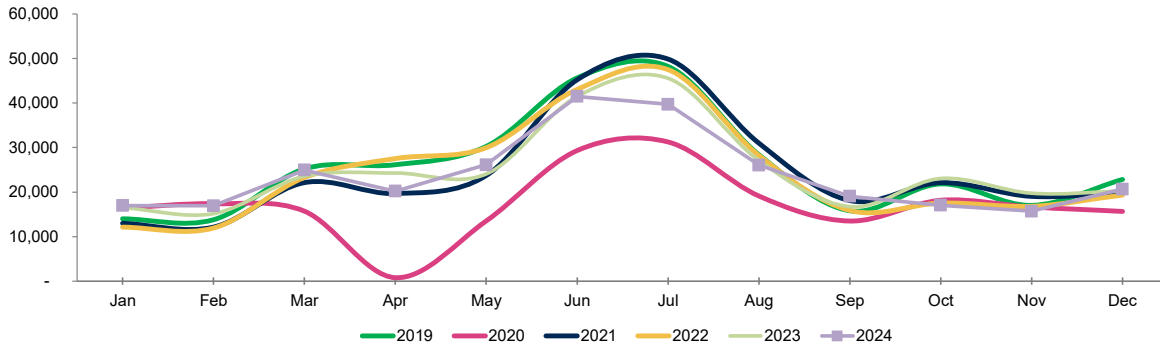
Note: Figures may not add up to 100% due to rounding

Year to Date Cargo by Weights



Note: Figures may not add up to 100% due to rounding

Total Passengers



Year	Jan	Feb	Mar	Apr	May	Jun	Jul	Aug	Sep	Oct	Nov	Dec	Total	Growth
2019	13,969	13,763	25,190	26,115	30,201	45,570	48,160	28,369	15,796	21,818	16,981	22,848	308,780	0.5%
2020	16,408	17,366	15,678	739	13,491	29,284	31,242	19,071	13,498	18,123	16,623	15,637	207,160	-32.9%
2021	13,016	12,126	22,110	19,655	23,696	45,199	49,810	30,952	18,048	22,114	19,029	19,829	295,584	42.7%
2022	12,115	11,934	23,272	27,520	29,943	43,038	47,481	28,193	15,821	17,543	16,804	19,336	293,000	-0.9%
2023	16,473	15,164	23,560	24,245	24,012	41,404	45,545	27,087	16,703	23,031	19,726	20,209	297,159	1.4%
2024	16,967	16,923	24,940	20,211	26,114	41,450	39,689	26,051	19,042	17,050	15,686	20,654	284,777	-4.2%

24 vs 23	3.0%	11.6%	5.9%	-16.6%	8.8%	0.1%	-12.9%	-3.8%	14.0%	-26.0%	-20.5%	2.2%	YE Peak Month
----------	------	-------	------	--------	------	------	--------	-------	-------	--------	--------	------	---------------

COMBINED AIRPORTS TRAFFIC REPORT

December 2024

PASSENGERS	Total Passengers - Monthly				Total Passengers - Year to Date			
	Compared to 2023 (YOY)				Compared to 2023 (YOY)			
Airports	Dec 2024	Dec 2023	Actual Change	Percent Change	YTD 2024	YTD 2023	Actual Change	Percent Change
John Glenn International	738,427	682,523	55,904	8.2%	8,965,614	8,375,611	590,003	7.0%
Rickenbacker International	20,654	20,209	445	2.2%	284,777	297,159	-12,382	-4.2%
AIRPORT TOTALS	759,081	702,732	56,349	8.0%	9,250,391	8,672,770	577,621	6.7%
CARGO	Total Cargo (Freight and Mail) - Monthly				Total Cargo (Freight and Mail) - Year-To-Date			
	Compared to 2023 (YOY)				Compared to 2023 (YOY)			
Airports	Dec 2024	Dec 2023	Actual Change	Percent Change	YTD 2024	YTD 2023	Actual Change	Percent Change
John Glenn International	688,031	946,745	-258,714	-27.3%	8,465,106	9,980,441	-1,515,335	-15.2%
Rickenbacker International	6,694,789	10,720,791	-4,026,002	-37.6%	90,094,321	128,561,129	-38,466,808	-29.9%
AIRPORT TOTALS	7,382,820	11,667,536	-4,284,716	-36.7%	98,559,427	138,541,570	-39,982,143	-28.9%
AIRCRAFT OPERATIONS	Actual Landing Operations - Monthly				Actual Landing Operations - Year to Date			
	Compared to 2023 (YOY)				Compared to 2023 (YOY)			
Airports	Dec 2024	Dec 2023	Actual Change	Percent Change	YTD 2024	YTD 2023	Actual Change	Percent Change
John Glenn International	3,821	3,602	219	6.1%	45,712	44,366	1,346	3.0%
Rickenbacker International	280	329	-49	-14.9%	3,384	4,474	-1,090	-24.4%
AIRPORT TOTALS	4,101	3,931	170	4.3%	49,096	48,840	256	0.5%