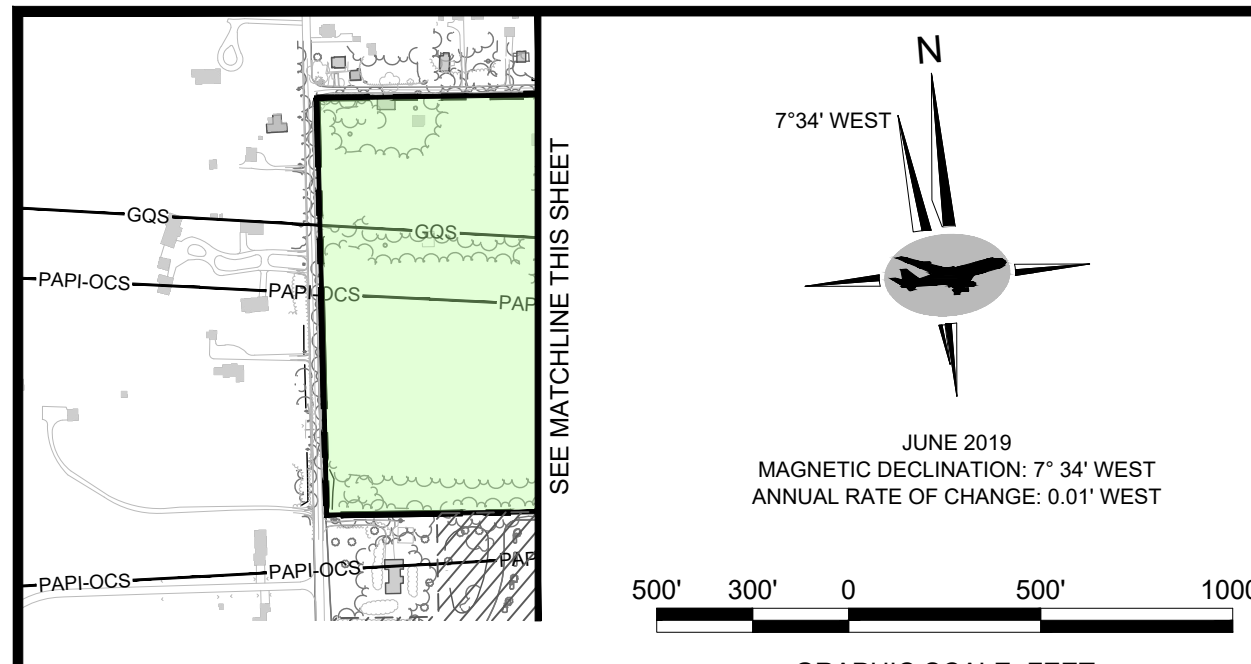


FAA DISCLAIMER
 THE FAA'S APPROVAL OF THIS AIRPORT LAYOUT PLAN (ALP) REPRESENTS ACCEPTANCE OF THE GENERAL LOCATION OF FUTURE FACILITIES DEPICTED. DURING THE PRELIMINARY DESIGN PHASE, THE AIRPORT SPONSOR IS REQUIRED TO RESUBMIT FOR APPROVAL THE FINAL LOCATIONS, HEIGHTS AND EXTERIOR FINISH OF STRUCTURES. FAA CONCERN IS OBSTRUCTIONS, IMPACT ON ELECTRONIC AIDS OR ADVERSE EFFECT ON CONTROLLER VISIBILITY OF AIRCRAFT APPROACHES AND GROUND MOVEMENT AREAS, WHICH COULD ADVERSELY AFFECT THE SAFETY, EFFICIENCY OR UTILITY OF THE AIRPORT.

FOR FAA APPROVAL STAMP



EXISTING FACILITIES TABLE		
No.	EXISTING BUILDING	TOP ELEV (MSL)
1	TERMINAL BUILDING	918.2'
2	28R GLIDE SLOPE - FAA	819.6'
3	PARKING GARAGE	901.6'
4	FAA AIR TRAFFIC CONTROL TOWER	1,032.9'
5	BP DUKE & DUCHESS SHOPPE	826.8'
6	REVENUE PLAZA	840.0'
7	LANE AVIATION CORPORATION	867.2'
8	AIRSIDE I	846.5'
9	JOHN GLENN INTERNATIONAL WELCOME SIGN	803.7'
10	28R LOCALIZER ANTENNA - FAA	812.1'
11	LANE AVIATION INC.	867.2'
12	SHUTTLE BUS ADMINISTRATIVE FACILITY	826.5'
13	AIRSIDE II	844.6'
14	AIRSIDE III	843.4'
15	10R GLIDE SLOPE - FAA	802.9'
16	AVIS RENTAL COMPOUND	831.5'
17	CELL PHONE PARKING LOT	814.1'
18	94TH AERO SQUADRON RESTAURANT	846.7'
19	FIRE STATION ARFF	837.3'
20	GLYCOL AST FARM	831.9'
21	FUEL FARM (BP, LANE, AIRNET)	836.5'
22	HILTON GARDEN INN	861.4'
23	MAINTENANCE FACILITY - AIRPORT AUTHORITY	831.0'
24	FLIGHT SAFETY INTERNATIONAL	864.6'
25	MPV HANGAR	844.5'

EXISTING FACILITIES TABLE		
No.	EXISTING BUILDING	TOP ELEV (MSL)
26	PRESIDENT AND CEO HOUSE	826.8'
27	BLUE PARKING LOT	821.1'
28	LLWAS ANTENNA - FAA (DECOMMISSIONED)	862.0'
29	10L GLIDE SLOPE - FAA	821.4'
30	10L GLIDE SLOPE - FAA	821.4'
31	HAMPTON INN	858.4'
32	GATE GOURMET	837.3'
34	VACANT HANGAR	857.7'
35	TAT HANGAR	856.0'
36	OLD TERMINAL BUILDING	862.3'
37	SPRIT AVIONICS, INC.	839.5'
38	SPRIT AVIONICS, INC.	843.8'
39	SPRIT AVIATION	839.2'
40	VACANT	835.9'
41	SEWAGE PUMPING STATION	810.0'
42	FAIRFIELD INN	866.2'
43	FAA RTR	823.0'
44	ALS SUB-STATION - FAA	820.4'
45	TRANSMITTER ELEC. - FAA	815.9'
46	28L LOCALIZER ANTENNA - FAA	806.0'
47	10L LOCALIZER ANTENNA - FAA	799.3'
48	TRANSMITTER BLDG. - FAA	812.8'
49	RTR SITE C	830.5'
50	NET JETS AVIATION	844.9'
51	TRITURATOR	839.3'

EXISTING FACILITIES TABLE		
No.	EXISTING BUILDING	TOP ELEV (MSL)
52	TRANSMITTER BLDG. - FAA	820.8'
53	10R LOCALIZER ANTENNA - FAA	814.1'
54	TRANSMITTER BLDG. - FAA	820.8'
55	NORTH AIRFIELD FUEL FARM - CRAA	826.4'
56	MCDONALDS - RESTAURANT	827.1'
57	AIRPORT SURVEILLANCE RADAR	916.0'
58	AIR CARGO CENTER PHASE I	839.9'
59	AIR CARGO CENTER PHASE II	837.9'
60	TRANSMITTER BLDG. - FAA	802.0'
61	T-HANGAR - CRAA	831.0'
62	T-HANGAR - CRAA	831.0'
63	ELECTRICAL VAULT BLDG.	821.2'
64	TAXICAB STARTER BLDG.	818.0'
65	NETJETS AVIATION	864.9'
66	NATIONWIDE HANGAR	870.5'
67	RED PARKING LOT	816.6'
68	EMPLOYEE PARKING LOT	817.4'
69	GLYCOL STORAGE TANKS	846.1'
70	VACANT PARKING LOT	812.5'
71	LOCALIZER	810.0'
72	WALKING LOT	810.0'
73	GREEN PARKING LOT	826.4'
74	RTR FAA PUMP STATION	833.5'
75	RESIDENCE INN	862.0'
76	AIRSIDE IV	843.3'

LEGEND

EXISTING	DESCRIPTION	FUTURE
---	RUNWAY SAFETY AREA	---
---	OBJECT FREE AREA	---
---	RUNWAY PROTECTION ZONE (RPZ)	---
---	RAILROAD	---
---	AIRPORT REFERENCE POINT	---
---	BUILDINGS	---
---	OBJECT FREE ZONE	---
---	AIRPORT BEACON	---
---	RUNWAYS	---
---	TAXIWAY / TAXILANE CENTERLINES	---
---	AIRPORT PROPERTY LINE	---
---	FENCE LINE	---
---	AOA FENCE LINE	---
---	ROADS	---
---	TERMINAL AREA SERVICE ROAD	---
---	TAXIWAY SAFETY AREA	---
---	TAXIWAY OBJECT FREE AREA	---
---	PRECISION OBSTACLE FREE ZONE	---
---	APRON / RAMP	---
---	VEGETATION	---
---	40:1 DEPARTURE OBSTACLE CLEARANCE SURFACE	---
---	PART 17 APPROACH SURFACE	---
---	THRESHOLD SITING SURFACE	---
---	GLIDE SLOPE	---
---	EMPLOYEE PARKING LOT	---
---	APPROACH LIGHTING (MALSR/ALSIF)	---
---	GLIDE SLOPE CRITICAL AREA	---
---	VACANT PARKING LOT	---
---	LOCALIZER	---
---	INNER MARKER	---
---	WIND CONE	---
---	RESIDENCE INN	---
---	DISTANCE MEASURING EQUIPMENT (DME)	---
---	RUNWAY VISUAL RANGE (RVR)	---
---	RUNWAY THRESHOLD LIGHTS	---
---	BUILDING RESTRICTION LINE	---
---	AVIATION EASEMENT	---

FUTURE FACILITIES LEGEND

DESCRIPTION	
---	PAVEMENT IMPROVEMENTS
---	DEVELOPMENT
---	BUILDING OR STRUCTURE
---	PAVEMENT DEMOLITION
---	BUILDING DEMOLITION

FUTURE FACILITIES TABLE

NO.	FACILITY DESCRIPTION	TOP ELEV (MSL)
U1A	TERMINAL (PROCESSOR)	857'
U1B	TERMINAL (CONCOURSE)	848'
U2	PARKING GARAGE	908'
U3	CONSOLIDATED RENTAL CAR FACILITY	872'
U4	CENTRAL UTILITY PLANT	845'
U11	FUTURE CELL PHONE PARKING LOT	819'
U12	FUTURE AERONAUTICAL FACILITY	867'
U15	QTA	876'

- NOTES**
- THESE ALP DRAWINGS ARE FOR PLANNING PURPOSES ONLY. THE DRAWING INFORMATION, INCLUDING LOCATION DETAILS AND ELEVATIONS SHOULD NOT BE USED FOR CONSTRUCTION. TO PROTECT THE AIRPORT'S OPERATIONAL SAFETY AND FUTURE DEVELOPMENT, ALL PROPOSED CONSTRUCTION ON THE AIRPORT MUST BE COORDINATED BY THE AIRPORT OWNER WITH FAA/STATE AERONAUTICS PRIOR TO CONSTRUCTION. REVIEW TAKES APPROXIMATELY 60 DAYS.
 - BUILDING DATA TABLE SOURCE: AIRPORT STAFF, NOVEMBER 2009 AND 2017 AIRPORT LAYOUT PLAN.
 - REFER TO SHEET 2 FOR ADDITIONAL SOURCE INFORMATION NOTES.
 - REFER TO SHEETS 9 THROUGH 14 FOR PART 77 APPROACH SURFACE DIMENSIONS AND ELEVATIONS.
 - AIRPLANE DESIGN GROUP (ADG) III AIRCRAFT MAY UTILIZE TAXIWAY L2, IF LESS THAN 500 OPERATIONS PER YEAR, PER FAA AOS LETTER DATED OCTOBER 25, 2007.
 - SPONSOR MUST MONITOR OBJECTS IDENTIFIED TO BE NEAR THE APPROACH SURFACES OF ALL RUNWAYS, AND OBJECTS MUST BE RE-EVALUATED AND ADDRESSED AS REQUIRED UPON IMPLEMENTATION OF THE RELATED IMPROVEMENTS.
 - BUILDINGS FACING THE RUNWAY SHOULD BE ORIENTED SUCH THAT A LINE DRAWN FROM THE LOCALIZER ANTENNA TO EACH END OF THE RUNWAY WILL BE EITHER PARALLEL OR PERPENDICULAR TO THE BUILDING WALLS. WALLS PARALLEL TO THE RUNWAY SHOULD BE CONSTRUCTED OF MATERIAL THAT WILL NOT REFLECT THE LOCALIZER SIGNAL.
 - EXISTING AND FUTURE NAVAID ACCESS ROUTES, WHERE FEASIBLE, SHOULD NOT INTERSECT WITH RUNWAYS OR TAXIWAYS.
 - OBJECTS/OBSTRUCTIONS DATA BASED ON AERIAL SURVEY PERFORMED BY QUANTUM SPATIAL SEPTEMBER 2018. DATA INCLUDES IMAGERY CONTROL AND ACQUISITION, AIRSIDE FACILITY INVENTORY AND OBSTRUCTION SURVEY, IMAGERY GEOREFERENCING AND ANALYSIS, PLANIMETRICS, OBJECT LOCATION(S) & TOP ELEVATIONS.
 - ALL ELEVATIONS, HORIZONTAL LATITUDE AND LONGITUDE COORDINATES ARE BASED ON NAVD83 AND NAD83 AND ARE ABOVE MEAN SEA LEVEL.
 - ALL FUTURE TAXIWAYS AND CONNECTORS WILL BE CONSTRUCTED TO ADG V / TDG S DESIGN STANDARDS WITH THE B-767-400 AS THE ASSUMED DESIGN AIRCRAFT.
 - SEE AIRPORT EXHIBIT "A" AIRPORT PROPERTY INVENTORY MAP FOR THE LOCATION AND FULL EXTENT OF EACH AVIATION EASEMENT FOR THE JOHN GLENN COLUMBUS INTERNATIONAL AIRPORT.
 - COLUMBUS INTERNATIONAL AIR CENTER BUILDINGS ARE A THROUGH-THE-FENCE OPERATION.

Revision Description			Date	By

JOHN GLENN COLUMBUS INTERNATIONAL AIRPORT

AIRPORT LAYOUT PLAN UPDATE

FUTURE AIRPORT LAYOUT PLAN

DESIGNED	CMH	DRAWN	ADCI	CHECKED	RICONDO	APPROVED	CMH
SCALE	AS SHOWN	CONTR. NO.		DATE	OCT. 2021	SHEET	04 of 24