

Monthly Statistics Report

Report compiled from self-reported airline statistics

January 2024



COLUMBUS
REGIONAL AIRPORT AUTHORITY

JOHN GLENN COLUMBUS INTERNATIONAL AIRPORT

January 2024

2/27/2024

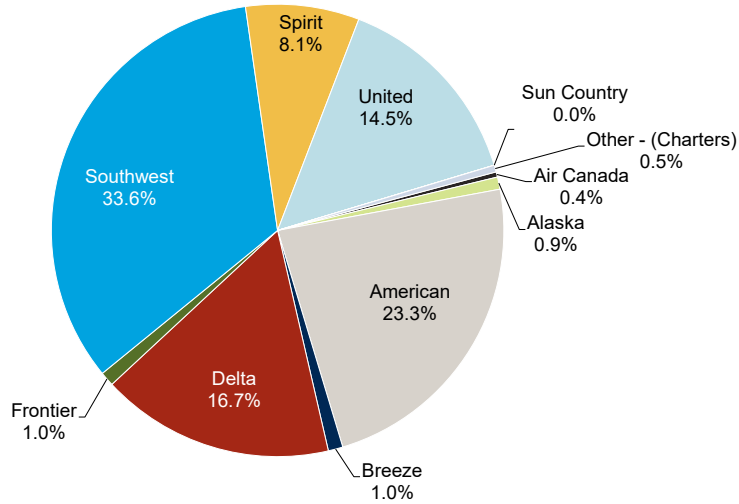
PASSENGERS	Total Passengers - Monthly							Total Passengers - Year to Date								
	Totals	Compared to 2023 (YOY)				Compared to 2019			Totals	Compared to 2023 (YOY)				Compared to 2019		
	Jan 2024	Jan 2023	Actual Change	Percent Change	Jan 2019	Actual Change	Percent Change	YTD 2024	YTD 2023	Actual Change	Percent Change	YTD 2019	Actual Change	Percent Change		
Airline																
Air Canada Express	2,199	2,004	195	9.7%	4,382	-2,183	-49.8%	2,199	2,004	195	9.7%	4,382	-2,183	-49.8%		
Alaska	5,122	6,269	-1,147	-18.3%	-	5,122	-	5,122	6,269	-1,147	-18.3%	-	5,122	-		
American	136,500	129,717	6,783	5.2%	136,635	-135	-0.1%	136,500	129,717	6,783	5.2%	136,635	-135	-0.1%		
Breeze	6,151	862	5,289	613.6%	-	6,151	-	6,151	862	5,289	613.6%	-	6,151	-		
Delta	97,930	93,847	4,083	4.4%	116,805	-18,875	-16.2%	97,930	93,847	4,083	4.4%	116,805	-18,875	-16.2%		
Frontier	6,006	4,186	1,820	43.5%	6,680	-674	-10.1%	6,006	4,186	1,820	43.5%	6,680	-674	-10.1%		
Southwest	197,234	182,656	14,578	8.0%	206,028	-8,794	-4.3%	197,234	182,656	14,578	8.0%	206,028	-8,794	-4.3%		
Spirit	47,637	42,057	5,580	13.3%	35,643	11,994	33.7%	47,637	42,057	5,580	13.3%	35,643	11,994	33.7%		
Sun Country	40	-	40	-	-	40	-	40	-	40	-	-	40	-		
United	85,046	83,470	1,576	1.9%	71,180	13,866	19.5%	85,046	83,470	1,576	1.9%	71,180	13,866	19.5%		
AIRLINES TOTALS	583,865	545,068	38,797	7.1%	577,353	6,512	1.1%	583,865	545,068	38,797	7.1%	577,353	6,512	1.1%		
CHARTER TOTALS	2,834	999	1,835	183.7%	3,351	-517	-15.4%	2,834	999	1,835	183.7%	3,351	-517	-15.4%		
AIRPORT TOTALS	586,699	546,067	40,632	7.4%	580,704	5,995	1.0%	586,699	546,067	40,632	7.4%	580,704	5,995	1.0%		
CARGO	Total Cargo (Freight and Mail) - Monthly							Total Cargo (Freight and Mail) - Year-To-Date								
	Totals	Compared to 2023 (YOY)				Compared to 2019			Totals	Compared to 2023 (YOY)				Compared to 2019		
	Jan 2024	Jan 2023	Actual Change	Percent Change	Jan 2019	Actual Change	Percent Change	YTD 2024	YTD 2023	Actual Change	Percent Change	YTD 2019	Actual Change	Percent Change		
Airline																
Alaska	5,012	25,077	-20,065	-80.0%	-	5,012	-	5,012	25,077	-20,065	-80.0%	-	5,012	-		
American	25,974	48,249	-22,275	-46.2%	163,328	-137,354	-84.1%	25,974	48,249	-22,275	-46.2%	163,328	-137,354	-84.1%		
Delta	158,576	-	158,576	-	180,543	-21,967	-12.2%	158,576	-	158,576	-	180,543	-21,967	-12.2%		
Southwest	425,616	397,832	27,784	7.0%	460,510	-34,894	-7.6%	425,616	397,832	27,784	7.0%	460,510	-34,894	-7.6%		
United	88,847	84,304	4,543	5.4%	115,881	-27,034	-23.3%	88,847	84,304	4,543	5.4%	115,881	-27,034	-23.3%		
AIRLINES TOTALS	704,025	555,462	148,563	26.7%	920,262	-216,237	-23.5%	704,025	555,462	148,563	26.7%	920,262	-216,237	-23.5%		
CARGO AIRLINES TOTALS	14,733	2,479	12,254	494.3%	6,926	7,807	112.7%	14,733	2,479	12,254	494.3%	6,926	7,807	112.7%		
AIRPORT TOTALS	718,758	557,941	160,817	28.8%	927,188	-208,430	-22.5%	718,758	557,941	160,817	28.8%	927,188	-208,430	-22.5%		
AIRCRAFT OPERATIONS	Actual Landing Operations - Monthly							Actual Landing Operations - Year to Date								
	Totals	Compared to 2023 (YOY)				Compared to 2019			Totals	Compared to 2023 (YOY)				Compared to 2019		
	Jan 2024	Jan 2023	Actual Change	Percent Change	Jan 2019	Actual Change	Percent Change	YTD 2024	YTD 2023	Actual Change	Percent Change	YTD 2019	Actual Change	Percent Change		
Airline																
Air Canada Express	27	28	-1	-3.6%	100	-73	-73.0%	27	28	-1	-3.6%	100	-73	-73.0%		
Alaska	19	24	-5	-20.8%	-	19	-	19	24	-5	-20.8%	-	19	-		
American	946	991	-45	-4.5%	1,205	-259	-21.5%	946	991	-45	-4.5%	1,205	-259	-21.5%		
Breeze	39	5	34	680.0%	-	39	-	39	5	34	680.0%	-	39	-		
Delta	573	625	-52	-8.3%	810	-237	-29.3%	573	625	-52	-8.3%	810	-237	-29.3%		
Frontier	23	15	8	53.3%	25	-2	-8.0%	23	15	8	53.3%	25	-2	-8.0%		
Southwest	950	877	73	8.3%	956	-6	-0.6%	950	877	73	8.3%	956	-6	-0.6%		
Spirit	169	164	5	3.0%	140	29	20.7%	169	164	5	3.0%	140	29	20.7%		
Sun Country	1	-	1	-	-	1	-	1	-	1	-	-	1	-		
United	534	537	-3	-0.6%	600	-66	-11.0%	534	537	-3	-0.6%	600	-66	-11.0%		
AIRLINES TOTALS	3,281	3,266	15	0.5%	3,836	-555	-14.5%	3,281	3,266	15	0.5%	3,836	-555	-14.5%		
CHARTER TOTALS	94	94	0	0.0%	103	-9	-8.7%	94	94	0	0.0%	103	-9	-8.7%		
CARGO AIRLINES TOTALS	11	15	-4	-26.7%	12	-1	-8.3%	11	15	-4	-26.7%	12	-1	-8.3%		
AIRPORT TOTALS	3,386	3,375	11	0.3%	3,951	-565	-14.3%	3,386	3,375	11	0.3%	3,951	-565	-14.3%		

Notes: Due to the COVID-19 pandemic that has impacted traffic since 1Q2020, 2019 data is noted here for baseline comparisons

JOHN GLENN COLUMBUS INTERNATIONAL AIRPORT

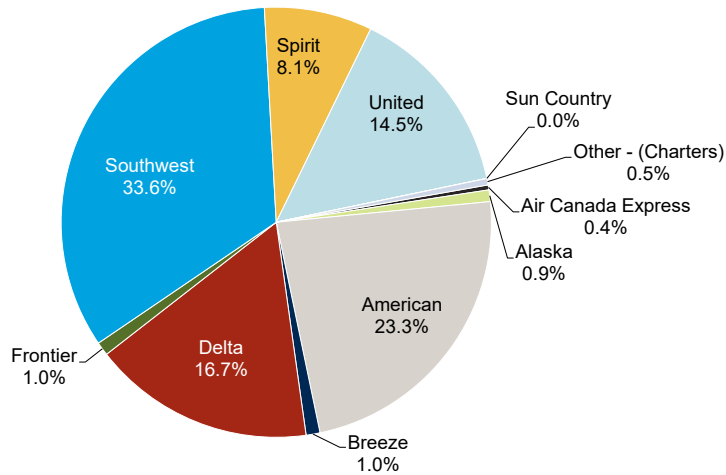
January 2024

Monthly by Passengers



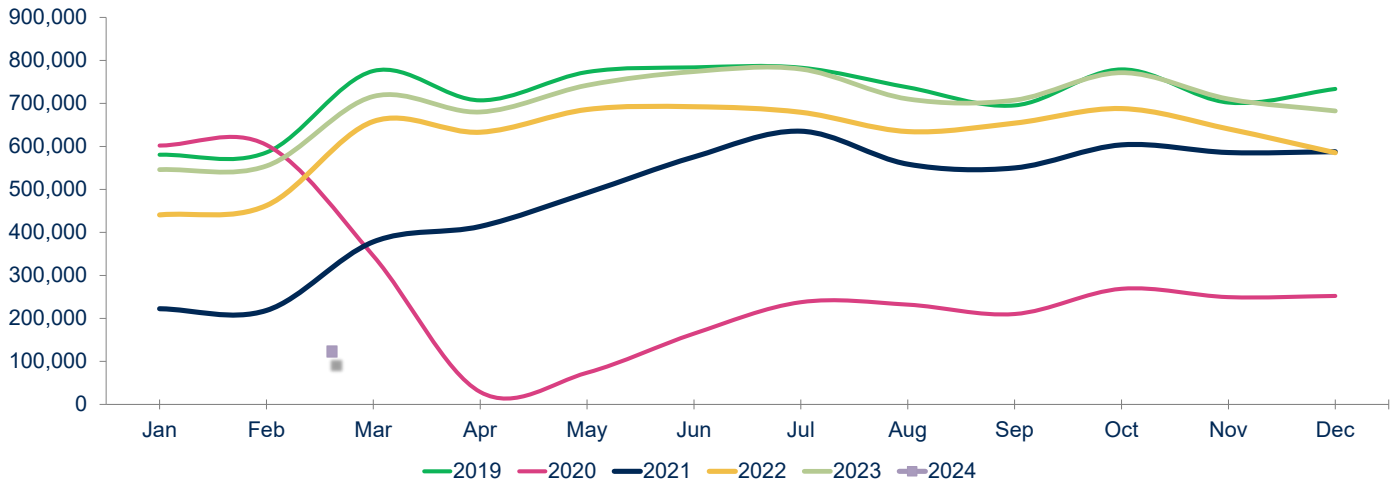
Notes:
Figures may not add up to 100% due to rounding

Year to Date by Passengers



Notes:
Figures may not add up to 100% due to rounding

Total Passengers



Year	Jan	Feb	Mar	Apr	May	Jun	Jul	Aug	Sep	Oct	Nov	Dec	Total	Growth
2019	580,704	586,025	775,533	707,185	772,991	783,831	783,122	737,440	695,409	779,088	702,070	733,710	8,637,108	6.1%
2020	602,022	603,467	345,418	28,943	73,769	164,700	237,756	232,096	210,233	268,914	249,522	252,287	3,269,127	-62.2%
2021	222,576	218,588	378,159	413,942	492,089	575,626	635,429	558,762	550,019	603,585	585,811	587,736	5,822,322	78.1%
2022	440,753	462,587	658,147	633,049	685,860	692,343	679,423	634,576	654,190	688,029	640,716	585,358	7,455,031	28.0%
2023	546,067	554,621	716,305	680,078	742,202	774,109	779,878	710,356	707,689	771,458	710,325	682,523	8,375,611	12.3%
2024	586,699												586,699	

24 vs 23 7.4%
24 vs. 19 1.0%

YE Peak Month
YE Lowest Month

RICKENBACKER INTERNATIONAL AIRPORT

January 2024

2/27/2024

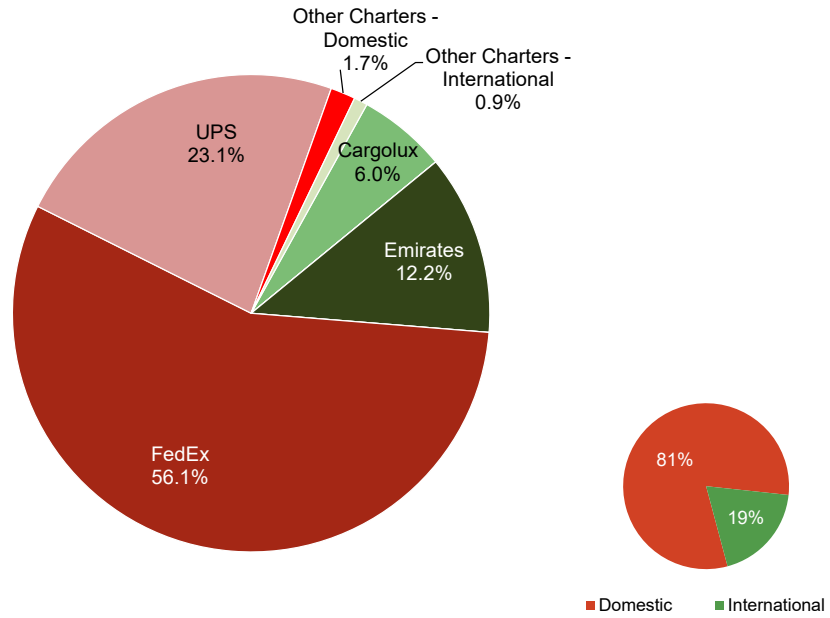
PASSENGERS	Total Passengers - Monthly							Total Passengers - Year to Date						
	Totals		Compared to 2023 (YOY)		Compared to 2019			Totals		Compared to 2023 (YOY)		Compared to 2019		
	Jan 2024	Jan 2023	Actual Change	Percent Change	Jan 2019	Actual Change	Percent Change	YTD 2024	YTD 2023	Actual Change	Percent Change	YTD 2019	Actual Change	Percent Change
Airline														
Allegiant Air	16,967	16,473	494	3.0%	12,401	4,566	36.8%	16,967	16,473	494	3.0%	12,401	228,489	36.8%
Miami Air	-	-	-	-	775	-775	-100.0%	-	-	-	-	775	775	-100.0%
Sun Country	-	-	-	-	-	-	-	-	-	-	-	-	151	-
Other Charters	-	-	-	-	793	-793	-100.0%	-	-	-	-	793	1,922	-100.0%
AIRPORT TOTALS	16,967	16,473	494	3.0%	13,969	2,998	21.5%	16,967	16,473	494	3.0%	13,969	2,998	21.5%
CARGO	Total Cargo (Freight and Mail) - Monthly							Total Cargo (Freight and Mail) - Year-To-Date						
	Totals		Compared to 2023 (YOY)		Compared to 2019			Totals		Compared to 2023 (YOY)		Compared to 2019		
	Jan 2024	Jan 2023	Actual Change	Percent Change	Jan 2019	Actual Change	Percent Change	YTD 2024	YTD 2023	Actual Change	Percent Change	YTD 2019	Actual Change	Percent Change
Airline														
AirBridgeCargo	-	-	-	-	743,339	-743,339	-100.0%	-	-	-	-	743,339	-743,339	-100.0%
Asiana	-	-	-	-	-	-	-	-	-	-	-	-	-	-
Cargolux	468,197	1,670,845	-1,202,648	-72.0%	4,090,926	-3,622,729	-88.8%	468,197	1,670,845	-1,202,648	-72.0%	4,090,926	-3,622,729	-88.6%
Cathay Pacific	-	150,664	-150,664	-100.0%	1,961,146	-1,961,146	-100.0%	-	150,664	-150,664	-100.0%	1,961,146	-1,961,146	-100.0%
China Airlines	-	-	-	-	1,301,204	-1,301,204	-100.0%	-	-	-	-	1,301,204	-1,301,204	-100.0%
Emirates	949,610	647,553	302,057	46.6%	2,547,448	-1,597,838	-62.7%	949,610	647,553	302,057	46.6%	2,547,448	-1,597,838	-62.7%
Etihad	-	-	-	-	2,497,511	-2,497,511	-100.0%	-	-	-	-	2,497,511	-2,497,511	-100.0%
FedEx	4,365,297	5,411,805	-1,046,508	-19.3%	7,412,995	-3,047,698	-41.1%	4,365,297	5,411,805	-1,046,508	-19.3%	7,412,995	-3,047,698	-41.1%
Korean Air	-	-	-	-	2,089,785	-2,089,785	-100.0%	-	-	-	-	2,089,785	-2,089,785	-100.0%
UPS	1,793,815	1,753,877	39,938	2.3%	19,849	1,773,966	8937.3%	1,793,815	1,753,877	39,938	2.3%	19,849	1,773,966	8937.3%
Other Cargo Charters - Domestic	131,367	30,815	100,552	326.3%	3,216,887	-3,085,520	-95.9%	131,367	30,815	100,552	326.3%	3,216,887	-3,085,520	-95.9%
Other Cargo Charters - International	71,347	559,707	-488,360	-87.3%	71,347	-	-	71,347	559,707	-488,360	-87.3%	71,347	-	-
AIRPORT TOTALS	7,779,633	10,225,266	-2,445,633	-23.9%	25,881,090	-18,101,457	-69.9%	7,779,633	10,225,266	-2,445,633	-23.9%	25,881,090	-18,101,457	-69.9%
TOTAL DOMESTIC														
TOTAL INTERNATIONAL														
AIRPORT TOTALS	7,779,633	10,225,266	-2,445,633	-23.9%	25,881,090	-18,101,457	-69.9%	7,779,633	10,225,266	-2,445,633	-23.9%	25,881,090	-18,101,457	-69.9%
AIRCRAFT OPERATIONS	Actual Landing Operations - Monthly							Actual Landing Operations - Year to Date						
	Totals		Compared to 2023 (YOY)		Compared to 2019			Totals		Compared to 2023 (YOY)		Compared to 2019		
	Jan 2024	Jan 2023	Actual Change	Percent Change	Jan 2019	Actual Change	Percent Change	YTD 2024	YTD 2023	Actual Change	Percent Change	YTD 2019	Actual Change	Percent Change
Airline														
Allegiant Air	57	55	2	3.6%	41	16	39.0%	57	55	2	3.6%	41	16	39.0%
Miami Air	-	-	-	-	6	-6	-100.0%	-	-	-	-	6	-6	-100.0%
Sun Country	-	-	-	-	-	-	-	-	-	-	-	-	-	-
Other Charters	-	-	-	-	4	-4	-100.0%	-	-	-	-	4	-4	-100.0%
PASSENGER OPERATIONS TOTALS	57	55	2	3.6%	51	6	11.8%	57	55	2	3.6%	51	6	11.8%
AirBridgeCargo	-	-	-	-	2	-2	-100.0%	-	-	-	-	2	-2	-100.0%
Asiana	-	-	-	-	-	-	-	-	-	-	-	-	-	-
Cargolux	4	9	-5	-55.6%	17	-13	-76.5%	4	9	-5	-55.6%	17	-13	-76.5%
Cathay Pacific	-	5	-5	-100.0%	16	-16	-100.0%	-	5	-5	-100.0%	16	-16	-100.0%
China Airlines	-	-	-	-	9	-9	-100.0%	-	-	-	-	9	-9	-100.0%
Emirates	5	4	1	25.0%	14	-9	-64.3%	5	4	1	25.0%	14	-9	-64.3%
Etihad	-	-	-	-	11	-11	-100.0%	-	-	-	-	11	-11	-100.0%
FedEx	98	126	-28	-22.2%	142	-44	-31.0%	98	126	-28	-22.2%	142	-44	-31.0%
Korean Air	-	-	-	-	-	-	-	-	-	-	-	-	-	-
UPS	26	25	1	4.0%	43	-17	-39.5%	26	25	1	4.0%	43	-17	-39.5%
Other Cargo Charters - Domestic	98	95	3	3.2%	51	47	92.2%	98	95	3	3.2%	51	47	92.2%
Other Cargo Charters - International	3	9	-6	-66.7%	16	-13	-81.3%	3	9	-6	-66.7%	16	-13	-81.3%
CARGO OPERATIONS TOTALS	234	273	-39	-14.3%	321	-87	-27.1%	234	273	-39	-14.3%	321	-87	-27.1%
AIRPORT TOTALS	291	328	-37	-11.3%	372	-81	-21.8%	291	328	-37	-11.3%	372	-81	-21.8%

Notes: Due to the COVID-19 pandemic that has impacted traffic since 10/2020, 2019 data is noted here for baseline comparisons

RICKENBACKER INTERNATIONAL AIRPORT

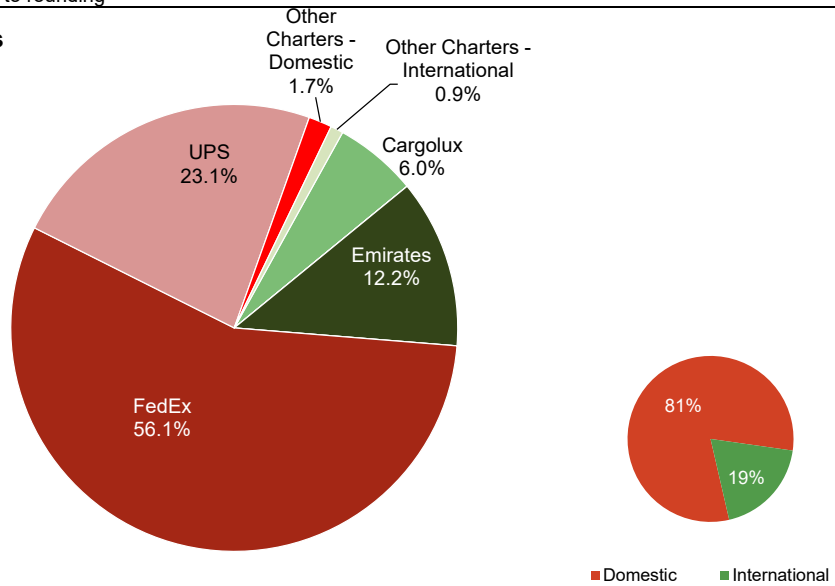
January 2024

Monthly Cargo by Weights



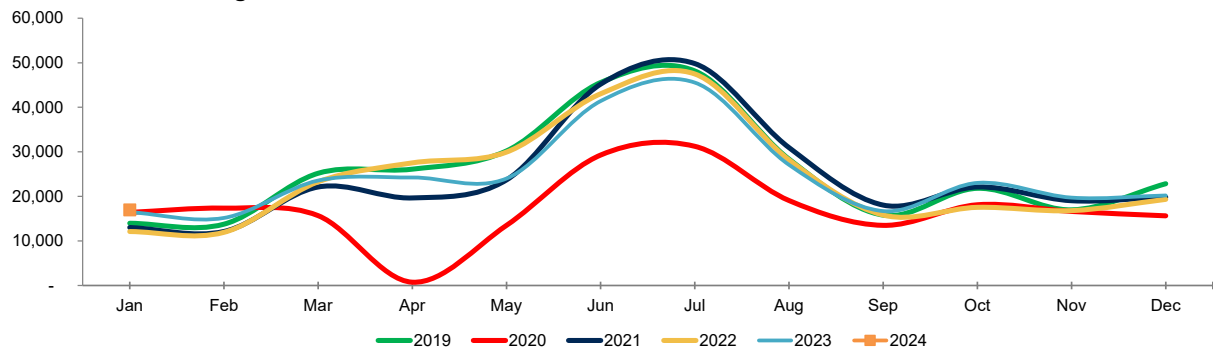
Note: Figures may not add up to 100% due to rounding

Year to Date Cargo by Weights



Note: Figures may not add up to 100% due to rounding

Total Passengers



Year	Jan	Feb	Mar	Apr	May	Jun	Jul	Aug	Sep	Oct	Nov	Dec	Total	Growth
2019	13,969	13,763	25,190	26,115	30,201	45,570	48,160	28,369	15,796	21,818	16,981	22,848	308,780	0.5%
2020	16,408	17,366	15,678	739	13,491	29,284	31,242	19,071	13,498	18,123	16,623	15,637	207,160	-32.9%
2021	13,016	12,126	22,110	19,655	23,696	45,199	49,810	30,952	18,048	22,114	19,029	19,829	295,584	42.7%
2022	12,115	11,934	23,272	27,520	29,943	43,038	47,481	28,193	15,821	17,543	16,804	19,336	293,000	-0.9%
2023	16,473	15,164	23,560	24,245	24,012	41,404	45,545	27,087	16,703	23,031	19,726	20,209	297,159	1.4%
2024	16,967												16,967	

24 vs 23

3.0%

YE Peak Month

24 vs. 19

21.5%

YE Lowest Month

COMBINED AIRPORTS TRAFFIC REPORT

January 2024

2/27/2024

PASSENGERS	Total Passengers - Monthly							Total Passengers - Year to Date						
	Compared to 2023 (YOY)				Compared to 2019			Compared to 2023 (YOY)				Compared to 2019		
	Jan 2024	Jan 2023	Actual Change	Percent Change	Jan 2019	Actual Change	Percent Change	YTD 2024	YTD 2023	Actual Change	Percent Change	YTD 2019	Actual Change	Percent Change
Airports														
John Glenn International	586,699	546,067	40,632	7.4%	580,704	5,995	1.0%	586,699	546,067	40,632	7.4%	580,704	5,995	1.0%
Rickenbacker International	16,967	16,473	494	3.0%	13,969	2,998	21.5%	16,967	16,473	494	3.0%	13,969	2,998	21.5%
AIRPORT TOTALS	603,666	562,540	41,126	7.3%	594,673	8,993	1.5%	603,666	562,540	41,126	7.3%	594,673	8,993	1.5%
CARGO	Total Cargo (Freight and Mail) - Monthly							Total Cargo (Freight and Mail) - Year-To-Date						
	Compared to 2023 (YOY)				Compared to 2019			Compared to 2023 (YOY)				Compared to 2019		
	Jan 2024	Jan 2023	Actual Change	Percent Change	Jan 2019	Actual Change	Percent Change	YTD 2024	YTD 2023	Actual Change	Percent Change	YTD 2019	Actual Change	Percent Change
Airports														
John Glenn International	718,758	557,941	160,817	28.8%	927,188	-208,430	-22.5%	718,758	557,941	160,817	28.8%	927,188	-208,430	-22.5%
Rickenbacker International	7,779,633	10,225,266	-2,445,633	-23.9%	25,881,090	-18,101,457	-69.9%	7,779,633	10,225,266	-2,445,633	-23.9%	25,881,090	-18,101,457	-69.9%
AIRPORT TOTALS	8,498,391	10,783,207	-2,284,816	-21.2%	26,808,278	-18,309,887	-68.3%	8,498,391	10,783,207	-2,284,816	-21.2%	26,808,278	-18,309,887	-68.3%
AIRCRAFT OPERATIONS	Actual Landing Operations - Monthly							Actual Landing Operations - Year to Date						
	Compared to 2023 (YOY)				Compared to 2019			Compared to 2023 (YOY)				Compared to 2019		
	Jan 2024	Jan 2023	Actual Change	Percent Change	Jan 2019	Actual Change	Percent Change	YTD 2024	YTD 2023	Actual Change	Percent Change	YTD 2019	Actual Change	Percent Change
Airports														
John Glenn International	3,386	3,375	11	0.3%	3,951	-565	-14.3%	3,386	3,375	11	0.3%	3,951	-565	-14.3%
Rickenbacker International	291	328	-37	-11.3%	372	-81	-21.8%	291	328	-37	-11.3%	372	-81	-21.8%
AIRPORT TOTALS	3,677	3,703	-26	-0.7%	4,323	-646	-14.9%	3,677	3,703	-26	-0.7%	4,323	-646	-14.9%

Notes: Due to the COVID-19 pandemic that has impacted traffic since 10/2020, 2019 data is noted here for baseline comparisons