

# *Monthly Statistics Report*

Report compiled from self-reported airline statistics

---

September 2023



**COLUMBUS**  
REGIONAL AIRPORT AUTHORITY

# JOHN GLENN COLUMBUS INTERNATIONAL AIRPORT

September 2023

10/24/2023

PASSENGERS
Airline
Air Canada Express
Alaska
American
Breeze
Delta
Frontier
Southwest
Spirit
Sun Country
United
AIRLINES TOTALS
CHARTER TOTALS
<b>AIRPORT TOTALS</b>

Total Passengers - Monthly						
Totals	Compared to 2022 (YOY)			Compared to 2019		
Sep 2023	Sep 2022	Actual Change	Percent Change	Sep 2019	Actual Change	Percent Change
5,594	4,897	697	14.2%	6,881	-1,287	-18.7%
16,555	9,854	6,701	68.0%	6,359	10,196	160.3%
169,283	159,386	9,897	6.2%	167,597	1,686	1.0%
5,585	2,494	3,091	123.9%	-	5,585	-
129,603	123,812	5,791	4.7%	157,412	-27,809	-17.7%
7,189	8,448	-1,259	-14.9%	8,817	-1,628	-18.5%
214,448	218,373	-3,925	-1.8%	216,351	-1,903	-0.9%
45,140	33,165	11,975	36.1%	31,465	13,675	43.5%
3,346	-	3,346	-	-	3,346	-
108,029	90,738	17,291	19.1%	98,142	9,887	10.1%
704,772	651,167	53,605	8.2%	693,024	11,748	1.7%
2,917	3,023	-106	-3.5%	2,385	532	22.3%
<b>707,689</b>	<b>654,190</b>	<b>53,499</b>	<b>8.2%</b>	<b>695,409</b>	<b>12,280</b>	<b>1.8%</b>

Total Passengers - Year to Date						
Totals	Compared to 2022 (YOY)			Compared to 2019		
YTD 2023	YTD 2022	Actual Change	Percent Change	YTD 2019	Actual Change	Percent Change
38,046	31,897	6,149	19.3%	56,754	-18,708	-33.0%
111,389	74,202	37,187	50.1%	54,440	56,949	104.6%
1,500,304	1,344,691	155,613	11.6%	1,531,889	-31,585	-2.1%
60,809	46,937	13,872	29.6%	-	60,809	-
1,106,644	989,695	116,949	11.8%	1,376,561	-269,917	-19.6%
56,393	76,386	-19,993	-26.2%	87,891	-31,498	-35.8%
1,997,562	1,882,133	115,429	6.1%	2,107,622	-110,060	-5.2%
400,546	394,293	6,253	1.6%	339,910	60,636	17.8%
15,167	-	15,167	-	-	15,167	-
899,871	677,664	222,207	32.8%	835,791	64,080	7.7%
6,186,731	5,517,898	668,833	12.1%	6,390,858	-204,127	-3.2%
24,684	23,030	1,654	7.2%	31,382	-6,698	-21.3%
<b>6,211,415</b>	<b>5,540,928</b>	<b>670,487</b>	<b>12.1%</b>	<b>6,422,240</b>	<b>-210,825</b>	<b>-3.3%</b>

United YTD numbers updated with 1H2023 corrected volumes.

CARGO
Airline
Alaska
American
Delta
Southwest
United
AIRLINES TOTALS
CARGO AIRLINES TOTALS
<b>AIRPORT TOTALS</b>

Total Cargo (Freight and Mail) - Monthly						
Totals	Compared to 2022 (YOY)			Compared to 2019		
Sep 2023	Sep 2022	Actual Change	Percent Change	Sep 2019	Actual Change	Percent Change
31,132	31,635	-503	-1.6%	16,584	14,548	87.7%
20,692	36,752	-16,060	-43.7%	122,320	-101,628	-83.1%
68,787	78,200	-9,413	-12.0%	166,205	-97,418	-58.6%
701,494	481,939	219,555	45.6%	364,895	336,599	92.2%
93,697	34,742	58,955	169.7%	96,612	-2,915	-3.0%
915,802	663,268	252,534	38.1%	766,616	149,186	19.5%
37,764	93,515	-55,751	-59.6%	-	37,764	-
<b>953,566</b>	<b>756,783</b>	<b>196,783</b>	<b>26.0%</b>	<b>766,616</b>	<b>186,950</b>	<b>24.4%</b>

Total Cargo (Freight and Mail) - Year-To-Date						
Totals	Compared to 2022 (YOY)			Compared to 2019		
YTD 2023	YTD 2022	Actual Change	Percent Change	YTD 2019	Actual Change	Percent Change
223,188	311,643	-88,455	-28.4%	189,963	33,225	17.5%
322,550	601,299	-278,749	-46.4%	1,311,542	-988,992	-75.4%
651,211	724,173	-72,962	-10.1%	1,522,809	-871,598	-57.2%
5,276,701	4,415,129	861,572	19.5%	3,522,084	1,754,617	49.8%
655,245	375,583	279,662	74.5%	882,818	-227,573	-25.8%
7,128,895	6,427,827	701,068	10.9%	7,429,216	-300,321	-4.0%
185,005	303,420	-118,415	-39.0%	42,123	142,882	339.2%
<b>7,313,900</b>	<b>6,731,247</b>	<b>582,653</b>	<b>8.7%</b>	<b>7,471,339</b>	<b>-157,439</b>	<b>-2.1%</b>

AIRCRAFT OPERATIONS
Airline
Air Canada Express
Alaska
American
Breeze
Delta
Frontier
Southwest
Spirit
Sun Country
United
AIRLINES TOTALS
CHARTER TOTALS
CARGO AIRLINES TOTALS
<b>AIRPORT TOTALS</b>

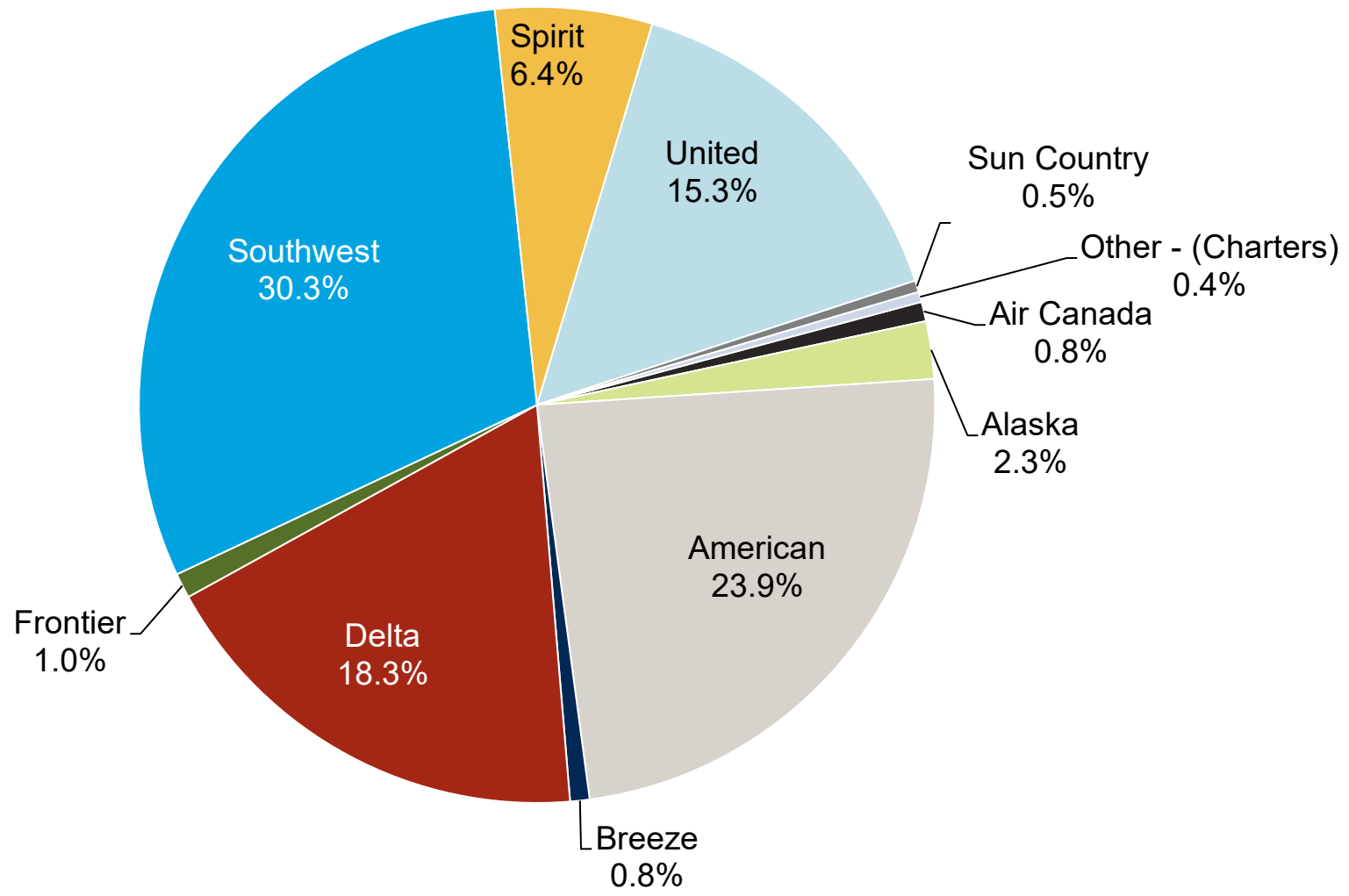
Actual Landing Operations - Monthly						
Totals	Compared to 2022 (YOY)			Compared to 2019		
Sep 2023	Sep 2022	Actual Change	Percent Change	Sep 2019	Actual Change	Percent Change
60	63	-3	-4.8%	107	-47	-43.9%
61	30	31	103.3%	30	31	103.3%
1,056	934	122	13.1%	1,332	-276	-20.7%
33	13	20	153.8%	-	33	-
713	723	-10	-1.4%	924	-211	-22.8%
28	29	-1	-3.4%	28	-	0.0%
925	850	75	8.8%	967	-42	-4.3%
164	126	38	30.2%	116	48	41.4%
10	-	10	-	-	10	-
614	515	99	19.2%	740	-126	-17.0%
3,664	3,283	381	11.6%	4,244	-580	-13.7%
79	57	22	38.6%	63	16	25.4%
28	45	-17	-37.8%	2	26	1300.0%
<b>3,771</b>	<b>3,385</b>	<b>386</b>	<b>11.4%</b>	<b>4,309</b>	<b>-538</b>	<b>-12.5%</b>

Actual Landing Operations - Year to Date						
Totals	Compared to 2022 (YOY)			Compared to 2019		
YTD 2023	YTD 2022	Actual Change	Percent Change	YTD 2019	Actual Change	Percent Change
409	459	-50	-10.9%	933	-524	-56.2%
364	235	129	54.9%	210	154	73.3%
9,433	8,806	627	7.1%	11,645	-2,212	-19.0%
367	342	25	7.3%	-	367	-
6,374	6,146	228	3.7%	8,194	-1,820	-22.2%
178	263	-85	-32.3%	287	-109	-38.0%
8,599	7,416	1,183	16.0%	9,040	-441	-4.9%
1,392	1,398	-6	-0.4%	1,180	212	18.0%
48	-	48	-	-	48	-
5,079	4,483	596	13.3%	6,132	-1,053	-17.2%
32,243	29,548					

# JOHN GLENN COLUMBUS INTERNATIONAL AIRPORT

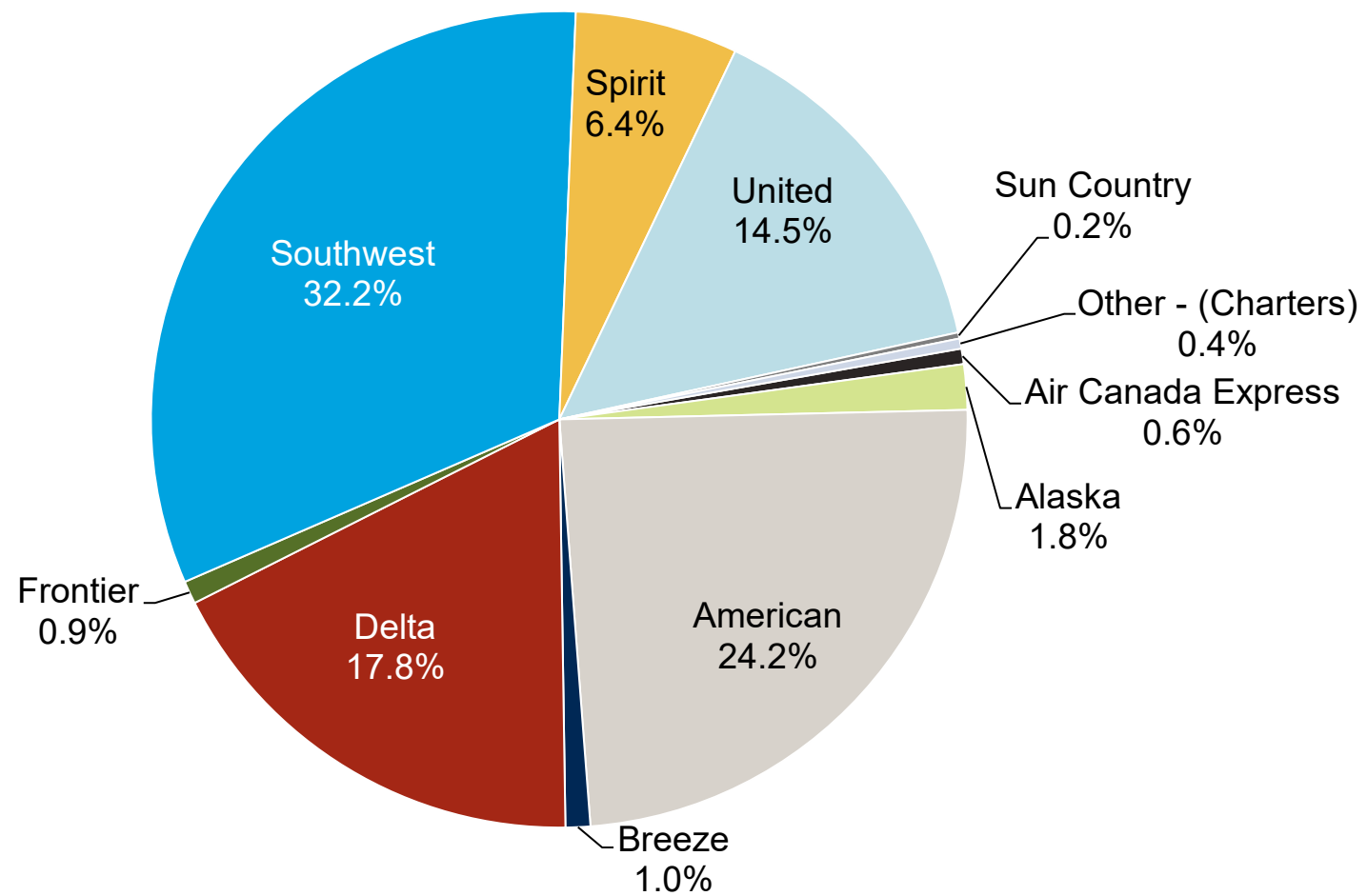
September 2023

## Monthly by Passengers



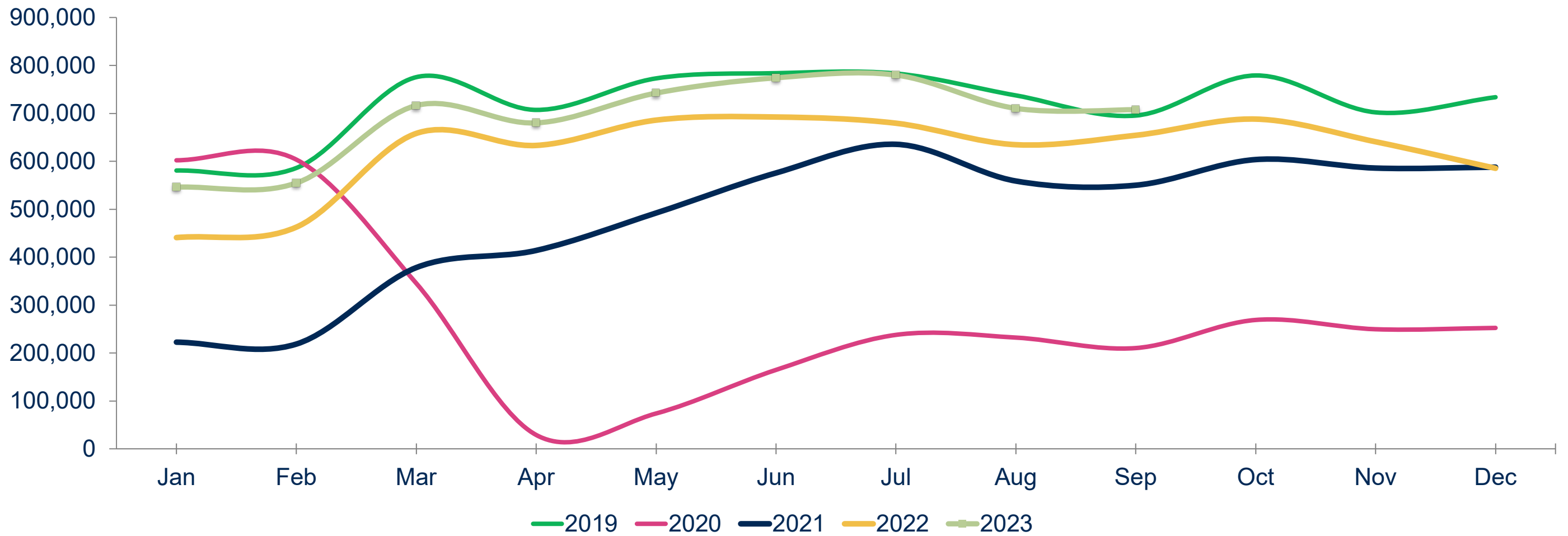
Notes:  
Figures may not add up to 100% due to rounding

## Year to Date by Passengers



Notes:  
Figures may not add up to 100% due to rounding

## Total Passengers



Year	Jan	Feb	Mar	Apr	May	Jun	Jul	Aug	Sep	Oct	Nov	Dec	Total	Growth
2019	580,704	586,025	775,533	707,185	772,991	783,831	783,122	737,440	695,409	779,088	702,070	733,710	8,637,108	6.1%
2020	602,022	603,467	345,418	28,943	73,769	164,700	237,756	232,096	210,233	268,914	249,522	252,287	3,269,127	-62.2%
2021	222,576	218,588	378,159	413,942	492,089	575,626	635,429	558,762	550,019	603,585	585,811	587,736	5,822,322	78.1%
2022	440,753	462,587	658,147	633,049	685,860	692,343	679,423	634,576	654,190	688,029	640,716	585,358	7,455,031	28.0%
2023	546,067	554,621	716,305	680,078	742,312	774,109	779,878	710,356	707,689				6,211,415	

23 vs 22	23.9%	19.9%	8.8%	7.4%	8.2%	11.8%	14.8%	11.9%	8.2%				YE Peak Month	
23 vs. 19	-6.0%	-5.4%	-7.6%	-3.8%	-4.0%	-1.2%	-0.4%	-3.7%	1.8%				YE Lowest Month	



# RICKENBACKER INTERNATIONAL AIRPORT

September 2023

10/24/2023

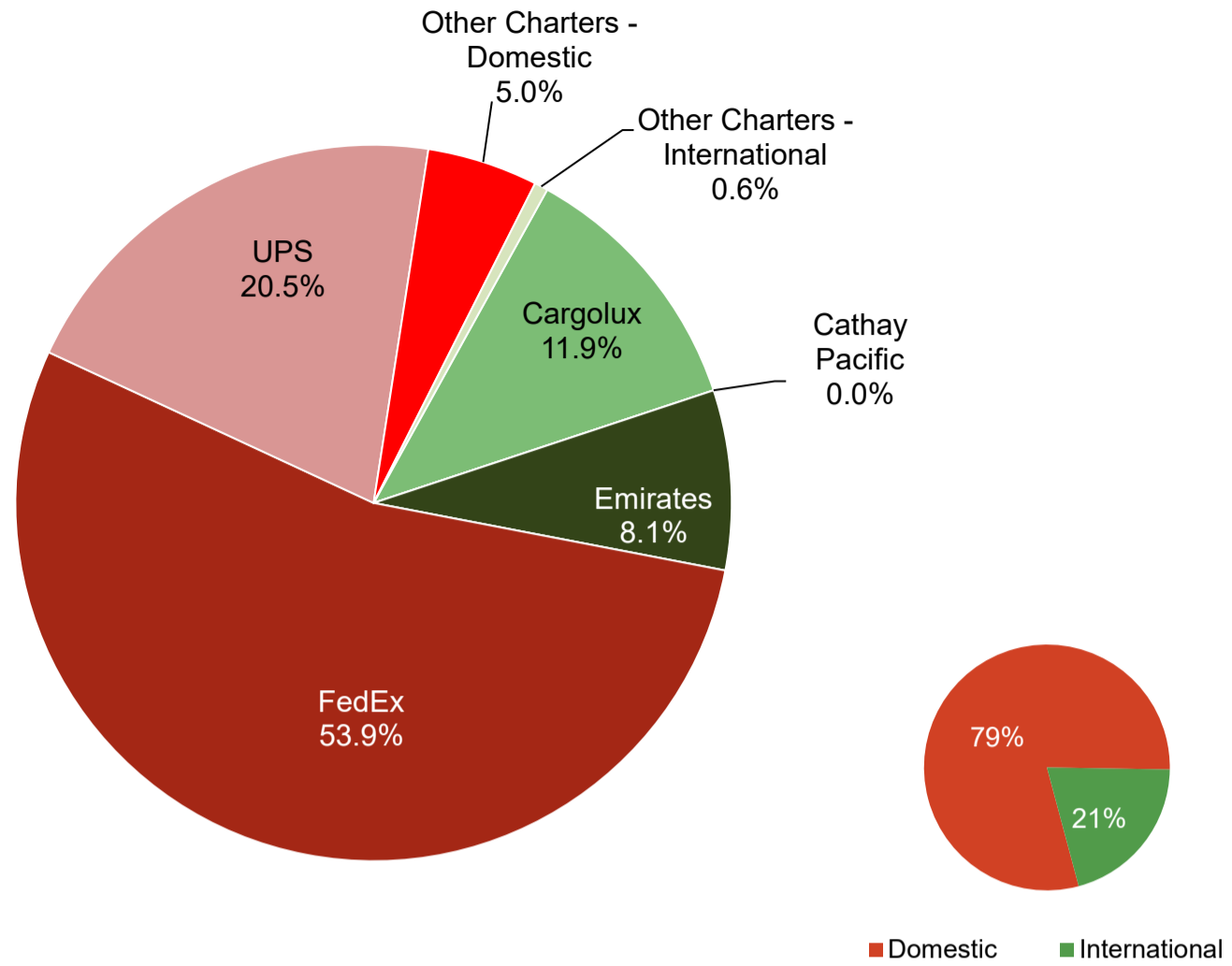
PASSENGERS	Total Passengers - Monthly							Total Passengers - Year to Date										
	Totals		Compared to 2022 (YOY)				Compared to 2019			Totals		Compared to 2022 (YOY)				Compared to 2019		
	Sep 2023	Sep 2022	Actual Change	Percent Change	Sep 2019	Actual Change	Percent Change	YTD 2023	YTD 2022	Actual Change	Percent Change	YTD 2019	Actual Change	Percent Change				
Airline																		
Allegiant Air	16,373	15,536	837	5.4%	15,209	1,164	7.7%	233,863	238,603	-4,740	-2.0%	243,698	228,489	-4.0%				
Miami Air	-	-	-	-	-	-	-	-	-	-	-	775	775	-100.0%				
Sun Country	-	285	-285	-100.0%	-	-	-	-	640	-640	-100.0%	151	151	-100.0%				
Other Charters	330	-	330	-	587	-257	-43.8%	330	74	256	345.9%	2,509	1,922	-86.8%				
AIRPORT TOTALS	16,703	15,821	882	5.6%	15,796	907	5.7%	234,193	239,317	-5,124	-2.1%	247,133	-12,940	-5.2%				
CARGO	Total Cargo (Freight and Mail) - Monthly							Total Cargo (Freight and Mail) - Year-To-Date										
	Totals		Compared to 2022 (YOY)				Compared to 2019			Totals		Compared to 2022 (YOY)				Compared to 2019		
	Sep 2023	Sep 2022	Actual Change	Percent Change	Sep 2019	Actual Change	Percent Change	YTD 2023	YTD 2022	Actual Change	Percent Change	YTD 2019	Actual Change	Percent Change				
Airline																		
AirBridgeCargo	-	-	-	-	1,020,397	-1,020,397	-100.0%	-	-	-	-	13,101,910	-13,101,910	-100.0%				
Asiana	-	-	-	-	996,653	-996,653	-100.0%	-	-	-	-	1,520,857	-1,520,857	-100.0%				
Cargolux	1,106,142	2,202,418	-1,096,276	-49.8%	3,172,410	-2,066,268	-65.1%	10,452,081	32,808,979	-22,356,898	-68.1%	30,245,170	-19,793,089	-65.4%				
Cathay Pacific	-	270,702	-270,702	-100.0%	2,110,267	-2,110,267	-100.0%	1,543,117	7,348,839	-5,805,722	-79.0%	17,838,559	-16,295,442	-91.3%				
China Airlines	-	-	-	-	1,532,791	-1,532,791	-100.0%	-	-	-	-	11,815,037	-11,815,037	-100.0%				
Emirates	757,155	786,572	-29,417	-3.7%	2,000,303	-1,243,148	-62.1%	6,454,590	14,761,493	-8,306,903	-56.3%	22,447,602	-15,993,012	-71.2%				
Etihad	-	-	-	-	160,803	-160,803	-100.0%	-	-	-	-	12,987,191	-12,987,191	-100.0%				
FedEx	5,029,606	6,312,086	-1,282,480	-20.3%	6,368,495	-1,338,889	-21.0%	48,260,511	53,808,382	-5,547,871	-10.3%	62,845,446	-14,584,935	-23.2%				
Korean Air	-	594,225	-594,225	-100.0%	-	-	-	-	20,095,506	-20,095,506	-100.0%	-	-	-				
UPS	1,916,353	2,186,309	-269,956	-12.3%	2,138,129	-221,776	-10.4%	16,887,085	19,073,443	-2,186,358	-11.5%	20,051,027	-3,163,942	-15.8%				
Other Cargo Charters - Domestic	466,773	37,237	429,536	1153.5%	606,047	-139,274	-23.0%	1,947,426	404,168	1,543,258	381.8%	3,419,201	-1,471,775	-43.0%				
Other Cargo Charters - International	56,600	2,700,473	-2,643,873	-97.9%	725,887	-669,287	-92.2%	12,028,419	35,135,131	-23,106,712	-65.8%	8,957,700	3,070,719	34.3%				
AIRPORT TOTALS	9,332,629	15,090,022	-5,757,393	-38.2%	20,832,182	-11,499,553	-55.2%	97,573,229	183,435,941	-85,862,712	-46.8%	205,229,699	-107,656,471	-52.5%				
TOTAL DOMESTIC	7,412,732	8,535,632	-1,122,900	-13.2%	9,112,671	-1,699,939	-18.7%	67,095,022	73,285,993	-6,190,971	-8.4%	86,315,674	-19,220,652	-22.3%				
TOTAL INTERNATIONAL	1,919,897	6,554,390	-4,634,493	-70.7%	11,719,511	-9,799,614	-83.6%	30,478,207	110,149,948	-79,671,741	-72.3%	118,914,025	-88,435,818	-74.4%				
AIRPORT TOTALS	9,332,629	15,090,022	-5,757,393	-38.2%	20,832,182	-11,499,553	-55.2%	97,573,229	183,435,941	-85,862,712	-46.8%	205,229,699	-107,656,471	-52.5%				
AIRCRAFT OPERATIONS	Actual Landing Operations - Monthly							Actual Landing Operations - Year to Date										
	Totals		Compared to 2022 (YOY)				Compared to 2019			Totals		Compared to 2022 (YOY)				Compared to 2019		
	Sep 2023	Sep 2022	Actual Change	Percent Change	Sep 2019	Actual Change	Percent Change	YTD 2023	YTD 2022	Actual Change	Percent Change	YTD 2019	Actual Change	Percent Change				
Airline																		
Allegiant Air	54	53	1	1.9%	54	-	0.0%	767	796	-29	-3.6%	837	-70	-8.4%				
Miami Air	-	-	-	-	-	-	-	-	-	-	-	6	-6	-100.0%				
Sun Country	-	1	-1	-100.0%	-	-	-	-	3	-3	-100.0%	1	-1	-100.0%				
Other Charters	2	-	2	-	4	-2	-50.0%	2	1	1	100.0%	30	-28	-93.3%				
PASSENGER OPERATIONS TOTALS	56	54	2	3.7%	58	-2	-3.4%	769	800	-31	-3.9%	874	-105	-12.0%				
AirBridgeCargo	-	-	-	-	9	-9	-100.0%	-	-	-	-	61	-61	-100.0%				
Asiana	-	-	-	-	4	-4	-100.0%	-	-	-	-	6	-6	-100.0%				
Cargolux	7	13	-6	-46.2%	17	-10	-58.8%	74	125	-51	-40.8%	150	-76	-50.7%				
Cathay Pacific	-	4	-4	-100.0%	17	-17	-100.0%	43	59	-16	-27.1%	145	-102	-70.3%				
China Airlines	-	-	-	-	9	-9	-100.0%	-	-	-	-	79	-79	-100.0%				
Emirates	4	4	-	0.0%	16	-12	-75.0%	37	134	-97	-72.4%	142	-105	-73.9%				
Etihad	-	-	-	-	1	-1	-100.0%	-	-	-	-	62	-62	-100.0%				
FedEx	115	136	-21	-15.4%	126	-11	-8.7%	1,258	1,168	90	7.7%	1,230	28	2.3%				
Korean Air	-	9	-9	-100.0%	-	-	-	-	244	-244	-100.0%	-	-	-				
UPS	28	29	-1	-3.4%	38	-10	-26.3%	237	240	-3	-1.3%	374	-137	-36.6%				
Other Cargo Charters - Domestic	86	81	5	6.2%	63	23	36.5%	831	716	115	16.1%	527	304	57.7%				
Other Cargo Charters - International	2	23	-21	-91.3%	7	-5	-71.4%	219	281	-62	-22.1%	48	171	356.3%				
CARGO OPERATIONS TOTALS	242	299	-57	-19.1%	307	-65	-21.2%	2,699	2,967	-268	-9.0%	2,824	-125	-4.4%				
AIRPORT TOTALS	298	353	-55	-15.6%	365	-67	-18.4%	3,468	3,767	-299	-7.9%	3,698	-230	-6.2%				

Notes: Due to the COVID-19 pandemic that has impacted traffic since 1Q2020, 2019 data is noted here for baseline comparisons

# RICKENBACKER INTERNATIONAL AIRPORT

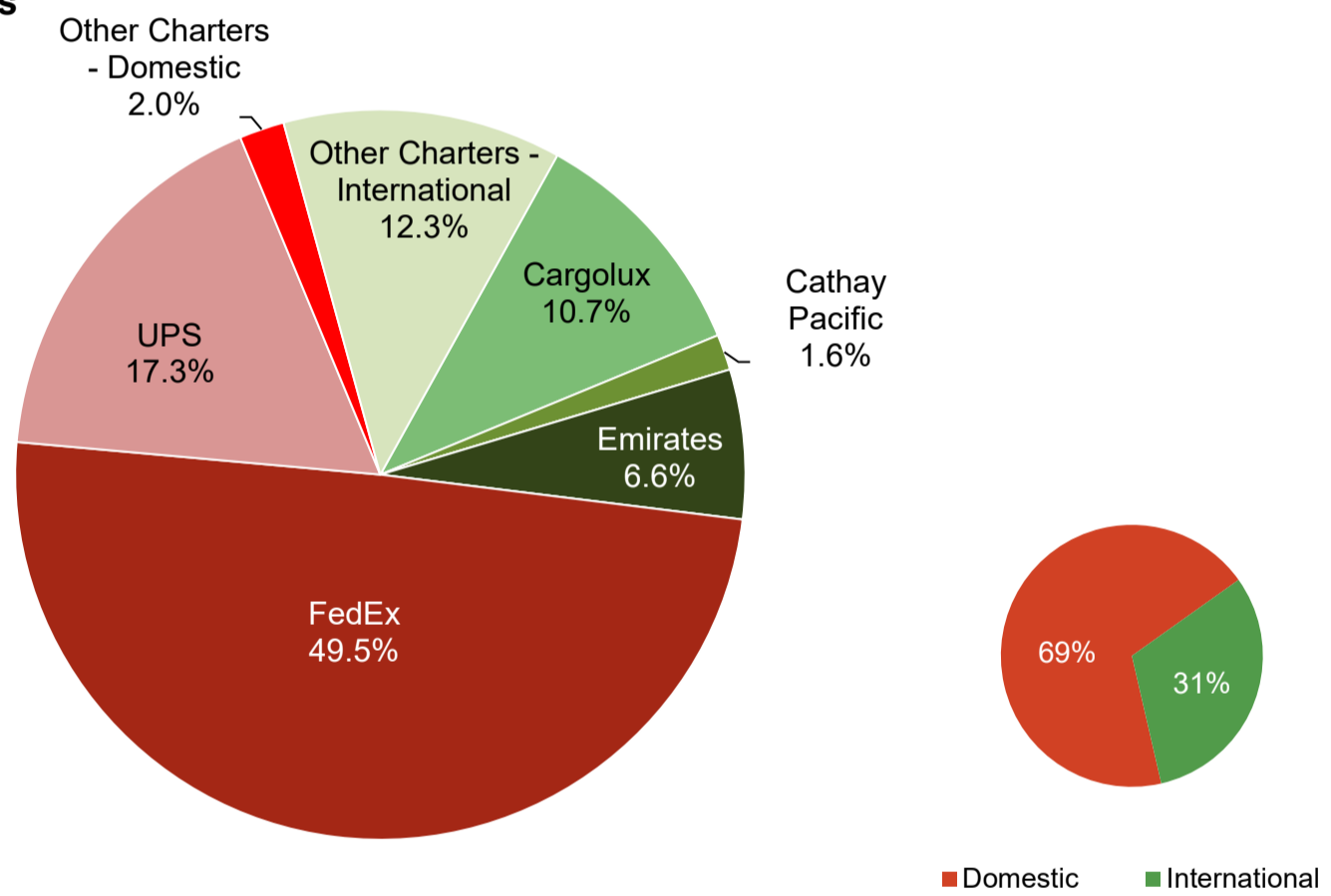
September 2023

## Monthly Cargo by Weights



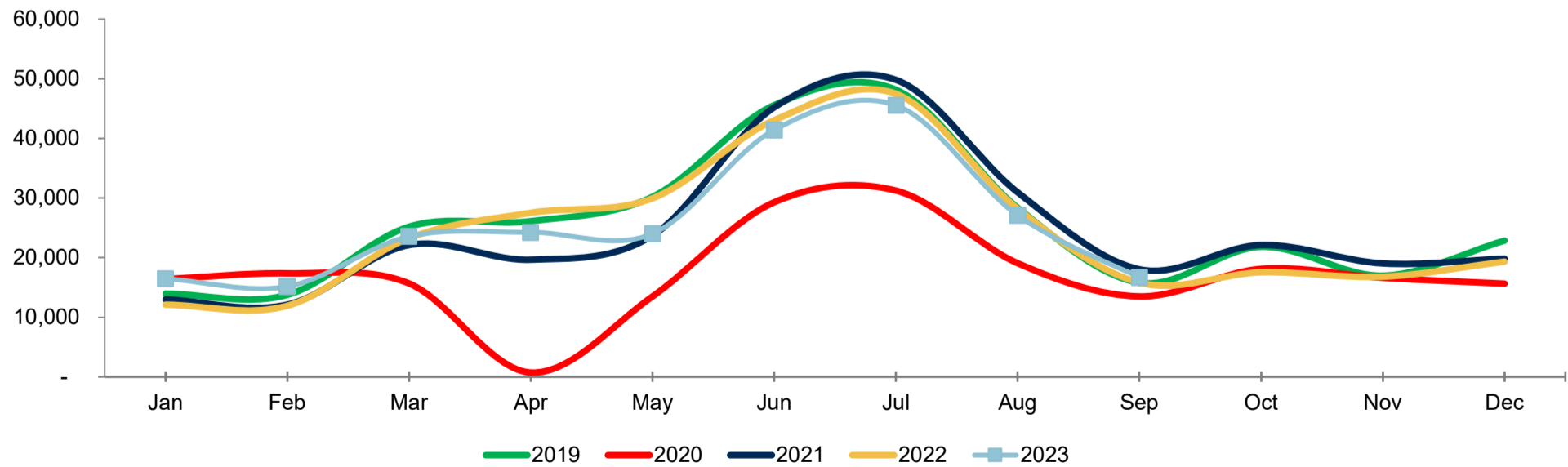
Note: Figures may not add up to 100% due to rounding

## Year to Date Cargo by Weights



Note: Figures may not add up to 100% due to rounding

## Total Passengers



Year	Jan	Feb	Mar	Apr	May	Jun	Jul	Aug	Sep	Oct	Nov	Dec	Total	Growth
2019	13,969	13,763	25,190	26,115	30,201	45,570	48,160	28,369	15,796	21,818	16,981	22,848	308,780	0.5%
2020	16,408	17,366	15,678	739	13,491	29,284	31,242	19,071	13,498	18,123	16,623	15,637	207,160	-32.9%
2021	13,016	12,126	22,110	19,655	23,696	45,199	49,810	30,952	18,048	22,114	19,029	19,829	295,584	42.7%
2022	12,115	11,934	23,272	27,520	29,943	43,038	47,481	28,193	15,821	17,543	16,804	19,336	293,000	-0.9%
2023	16,473	15,164	23,560	24,245	24,012	41,404	45,545	27,087	16,703				234,193	

	Jan	Feb	Mar	Apr	May	Jun	Jul	Aug	Sep	
23 vs. 22	36.0%	27.1%	1.2%	-11.9%	-19.8%	-3.8%	-4.1%	-3.9%	5.6%	YE Peak Month
23 vs. 19	17.9%	10.2%	-6.5%	-7.2%	-20.5%	-9.1%	-5.4%	-4.5%	5.7%	YE Lowest Month

# COMBINED AIRPORTS TRAFFIC REPORT

September 2023

10/24/2023

PASSENGERS	Total Passengers - Monthly							Total Passengers - Year to Date						
	Compared to 2022 (YOY)				Compared to 2019			Compared to 2022 (YOY)				Compared to 2019		
	Sep 2023	Sep 2022	Actual Change	Percent Change	Sep 2019	Actual Change	Percent Change	YTD 2023	YTD 2022	Actual Change	Percent Change	YTD 2019	Actual Change	Percent Change
Airports														
John Glenn International	707,689	654,190	53,499	8.2%	695,409	12,280	1.8%	6,211,415	5,540,928	670,487	12.1%	6,422,240	-210,825	-3.3%
Rickenbacker International	16,703	15,821	882	5.6%	15,796	907	5.7%	234,193	239,317	-5,124	-2.1%	247,133	-12,940	-5.2%
AIRPORT TOTALS	724,392	670,011	54,381	8.1%	711,205	13,187	1.9%	6,445,608	5,780,245	665,363	11.5%	6,669,373	-223,765	-3.4%
CARGO	Total Cargo (Freight and Mail) - Monthly							Total Cargo (Freight and Mail) - Year-To-Date						
	Compared to 2022 (YOY)				Compared to 2019			Compared to 2022 (YOY)				Compared to 2019		
	Sep 2023	Sep 2022	Actual Change	Percent Change	Sep 2019	Actual Change	Percent Change	YTD 2023	YTD 2022	Actual Change	Percent Change	YTD 2019	Actual Change	Percent Change
Airports														
John Glenn International	953,566	756,783	196,783	26.0%	766,616	186,950	24.4%	7,313,900	6,731,247	582,653	8.7%	7,471,339	-157,439	-2.1%
Rickenbacker International	9,332,629	15,090,022	-5,757,393	-38.2%	20,832,182	-11,499,553	-55.2%	97,573,229	183,435,941	-85,862,712	-46.8%	205,229,699	-107,656,471	-52.5%
AIRPORT TOTALS	10,286,195	15,846,805	-5,560,610	-35.1%	21,598,798	-11,312,603	-52.4%	104,887,129	190,167,188	-85,280,059	-44.8%	212,701,038	-107,813,910	-50.7%
AIRCRAFT OPERATIONS	Actual Landing Operations - Monthly							Actual Landing Operations - Year to Date						
	Compared to 2022 (YOY)				Compared to 2019			Compared to 2022 (YOY)				Compared to 2019		
	Sep 2023	Sep 2022	Actual Change	Percent Change	Sep 2019	Actual Change	Percent Change	YTD 2023	YTD 2022	Actual Change	Percent Change	YTD 2019	Actual Change	Percent Change
Airports														
John Glenn International	3,771	3,385	386	11.4%	4,309	-538	-12.5%	33,089	30,420	2,669	8.8%	38,382	-5,293	-13.8%
Rickenbacker International	298	353	-55	-15.6%	365	-67	-18.4%	3,468	3,767	-299	-7.9%	3,698	-230	-6.2%
AIRPORT TOTALS	4,069	3,738	331	8.9%	4,674	-605	-12.9%	36,557	34,187	2,370	6.9%	42,080	-5,523	-13.1%

Notes: Due to the COVID-19 pandemic that has impacted traffic since 1Q2020, 2019 data is noted here for baseline comparisons