

# *Monthly Statistics Report*

Report compiled from self-reported airline statistics

---

July 2023



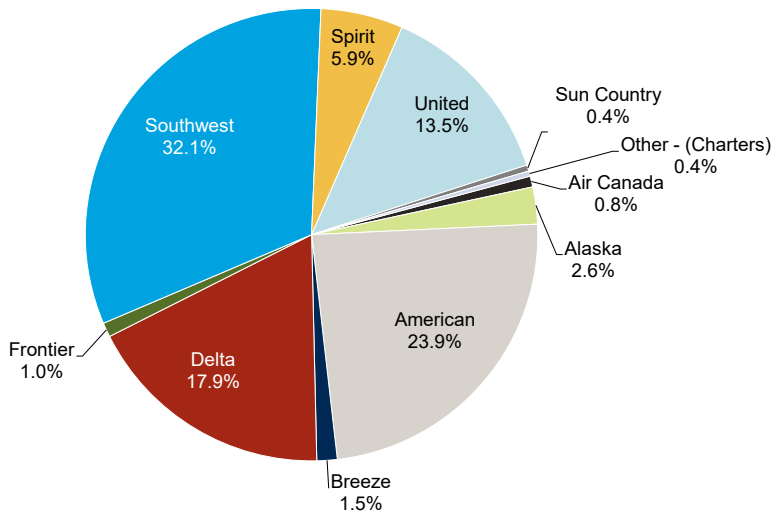
**COLUMBUS**  
REGIONAL AIRPORT AUTHORITY



# JOHN GLENN COLUMBUS INTERNATIONAL AIRPORT

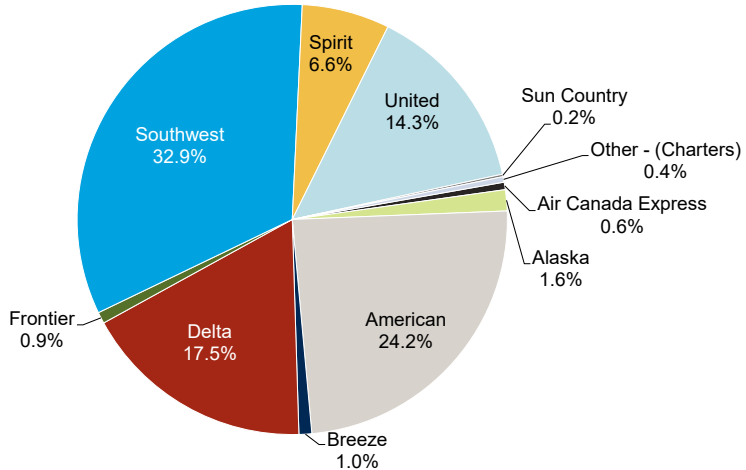
July 2023

## Monthly by Passengers



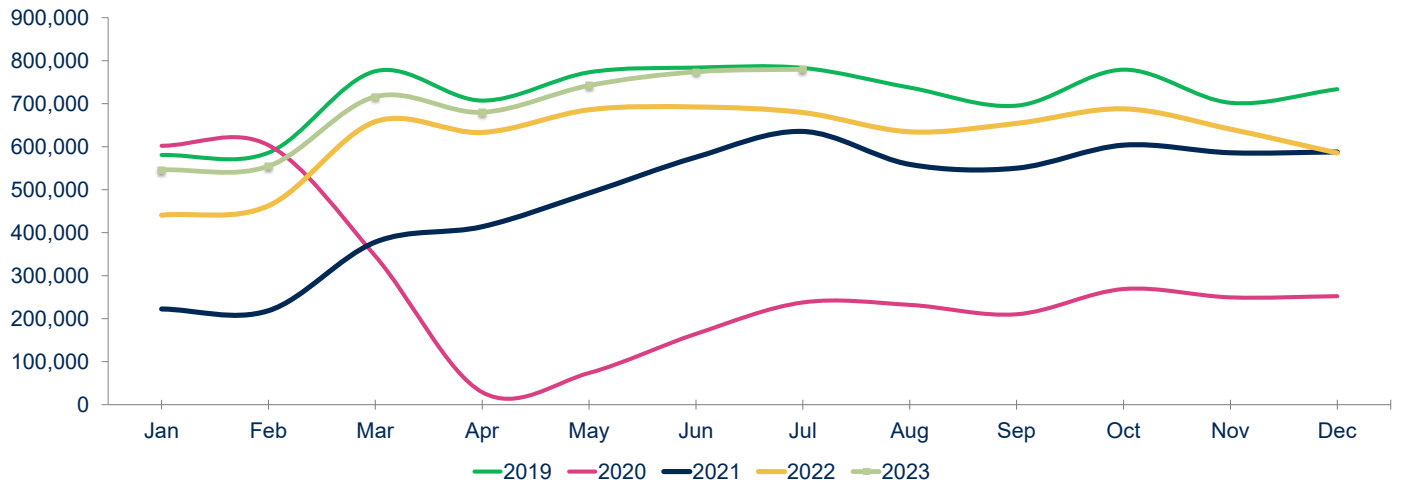
Notes:  
Figures may not add up to 100% due to rounding

## Year to Date by Passengers



Notes:  
Figures may not add up to 100% due to rounding

## Total Passengers



Year	Jan	Feb	Mar	Apr	May	Jun	Jul	Aug	Sep	Oct	Nov	Dec	Total	Growth
2019	580,704	586,025	775,533	707,185	772,991	783,831	783,122	737,440	695,409	779,088	702,070	733,710	8,637,108	6.1%
2020	602,022	603,467	345,418	28,943	73,769	164,700	237,756	232,096	210,233	268,914	249,522	252,287	3,269,127	-62.2%
2021	222,576	218,588	378,159	413,942	492,089	575,626	635,429	558,762	550,019	603,585	585,811	587,736	5,822,322	78.1%
2022	440,753	462,587	658,147	633,049	685,860	692,343	679,423	634,576	654,190	688,029	640,716	585,358	7,455,031	28.0%
2023	546,067	554,621	716,305	680,078	742,312	774,109	779,878						4,793,370	
23 vs 22	23.9%	19.9%	8.8%	7.4%	8.2%	11.8%	14.8%							YE Peak Month
23 vs 19	-6.0%	-5.4%	-7.6%	-3.8%	-4.0%	-1.2%	-0.4%							YE Lowest Month

# RICKENBACKER INTERNATIONAL AIRPORT

July 2023

8/22/2023

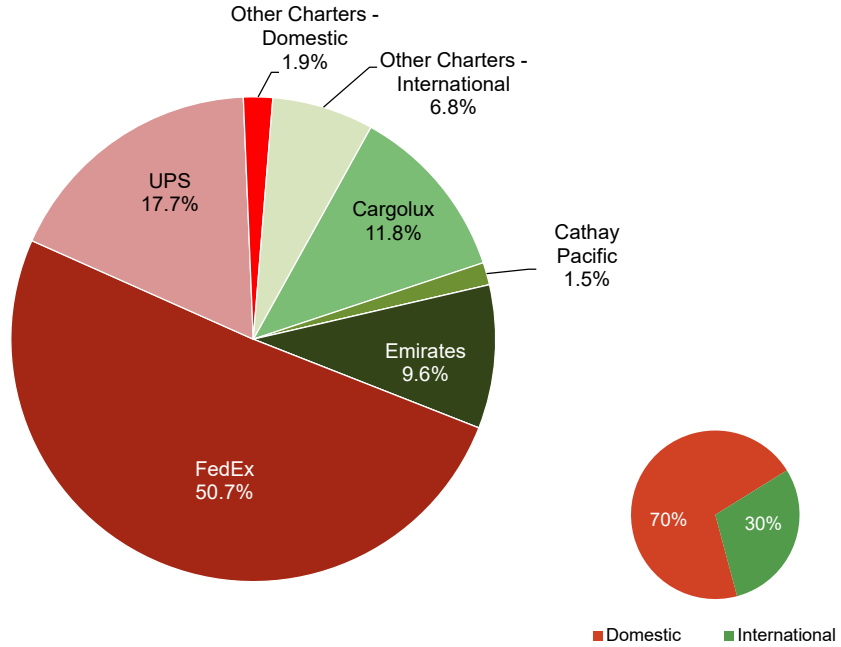
RICKENBACKER INTERNATIONAL AIRPORT																
July 2023																
8/22/2023																
PASSENGERS	Total Passengers - Monthly							Total Passengers - Year to Date								
	Totals		Compared to 2021 (YOY)			Compared to 2019			Totals		Compared to 2021 (YOY)			Compared to 2019		
	Jul 2023	Jul 2022	Actual Change	Percent Change	Jul 2019	Actual Change	Percent Change	YTD 2023	YTD 2022	Actual Change	Percent Change	YTD 2019	Actual Change	Percent Change		
Airline																
Allegiant Air	45,545	47,407	-1,862	-3.9%	48,160	-2,615	-5.4%	190,403	194,874	-4,471	-2.3%	200,120	-9,717	-4.9%		
Miami Air	-	-	-	-	-	-	-	-	-	-	-	775	-775	-100.0%		
Sun Country	-	-	-	-	-	-	-	-	355	-355	-100.0%	151	-151	-100.0%		
Other Charters	-	74	-74	-100.0%	-	-	-	-	74	-74	-100.0%	1,922	-1,922	-100.0%		
<b>AIRPORT TOTALS</b>	<b>45,545</b>	<b>47,481</b>	<b>-1,936</b>	<b>-4.1%</b>	<b>48,160</b>	<b>-2,615</b>	<b>-5.4%</b>	<b>190,403</b>	<b>195,303</b>	<b>-4,900</b>	<b>-2.5%</b>	<b>202,968</b>	<b>-12,565</b>	<b>-6.2%</b>		
CARGO	Total Cargo (Freight and Mail) - Monthly							Total Cargo (Freight and Mail) - Year-To-Date								
	Totals		Compared to 2021 (YOY)			Compared to 2019			Totals		Compared to 2021 (YOY)			Compared to 2019		
	Jul 2023	Jul 2022	Actual Change	Percent Change	Jul 2019	Actual Change	Percent Change	YTD 2023	YTD 2022	Actual Change	Percent Change	YTD 2019	Actual Change	Percent Change		
Airline																
AirBridgeCargo	-	-	-	-	1,299,843	-1,299,843	-100.0%	-	-	-	-	10,813,672	-10,813,672	-100.0%		
Asiana	-	-	-	-	-	-	-	-	-	-	-	-	-	-		
Cargolux	1,132,897	3,264,020	-2,131,123	-65.3%	3,734,920	-2,602,023	-69.7%	8,284,865	26,995,130	-18,710,265	-69.3%	23,534,993	-15,250,128	-64.8%		
Cathay Pacific	143,533	360,554	-217,021	-60.2%	2,288,579	-2,145,046	-93.7%	1,543,117	6,892,083	-5,348,966	-77.6%	13,076,082	-11,532,965	-88.2%		
China Airlines	-	-	-	-	1,764,285	-1,764,285	-100.0%	-	-	-	-	8,915,940	-8,915,940	-100.0%		
Emirates	916,601	645,077	271,524	42.1%	2,977,453	-2,060,852	-69.2%	5,000,079	12,766,125	-7,766,046	-60.8%	17,288,039	-12,287,960	-71.1%		
Ethiad	-	-	-	-	429,013	-429,013	-100.0%	-	-	-	-	12,702,153	-12,702,153	-100.0%		
FedEx	4,853,801	5,692,536	-838,735	-14.7%	6,925,698	-2,071,897	-29.9%	37,299,272	41,717,161	-4,417,889	-10.6%	49,349,557	-12,050,285	-24.4%		
Korean Air	-	1,206,589	-1,206,589	-100.0%	-	-	-	-	18,538,654	-18,538,654	-100.0%	-	-	-		
UPS	1,692,567	2,055,408	-362,841	-17.7%	2,368,143	-675,576	-28.5%	13,017,085	14,679,398	-1,662,313	-11.3%	15,394,676	-2,377,591	-15.4%		
Other Cargo Charters - Domestic	186,540	80,385	106,155	132.1%	276,886	-90,346	-32.6%	1,296,292	330,100	966,192	292.7%	1,940,119	-643,827	-33.2%		
Other Cargo Charters - International	647,432	5,479,066	-4,831,634	-88.2%	769,521	-122,089	-15.9%	11,373,601	30,403,823	-19,030,222	-62.6%	7,369,249	4,004,352	54.3%		
<b>AIRPORT TOTALS</b>	<b>9,573,371</b>	<b>18,783,635</b>	<b>-9,210,264</b>	<b>-49.0%</b>	<b>22,834,341</b>	<b>-13,260,970</b>	<b>-58.1%</b>	<b>77,814,311</b>	<b>152,322,474</b>	<b>-74,508,163</b>	<b>-48.9%</b>	<b>160,384,479</b>	<b>-82,570,169</b>	<b>-51.5%</b>		
TOTAL DOMESTIC		6,732,908	7,828,329	-1,095,421	-14.0%	9,570,727	-2,837,819	-29.7%	51,612,649	56,726,659	-5,114,010	-9.0%	66,684,352	-15,071,703	-22.6%	
TOTAL INTERNATIONAL		2,840,463	10,955,306	-8,114,843	-74.1%	13,263,614	-10,423,151	-78.6%	26,201,662	95,595,815	-69,394,153	-72.6%	93,700,127	-67,498,465	-72.0%	
<b>AIRPORT TOTALS</b>		<b>9,573,371</b>	<b>18,783,635</b>	<b>-9,210,264</b>	<b>-49.0%</b>	<b>22,834,341</b>	<b>-13,260,970</b>	<b>-58.1%</b>	<b>77,814,311</b>	<b>152,322,474</b>	<b>-74,508,163</b>	<b>-48.9%</b>	<b>160,384,479</b>	<b>-82,570,169</b>	<b>-51.5%</b>	
AIRCRAFT OPERATIONS	Actual Landing Operations - Monthly							Actual Landing Operations - Year to Date								
	Totals		Compared to 2021 (YOY)			Compared to 2019			Totals		Compared to 2021 (YOY)			Compared to 2019		
	Jul 2023	Jul 2022	Actual Change	Percent Change	Jul 2019	Actual Change	Percent Change	YTD 2023	YTD 2022	Actual Change	Percent Change	YTD 2019	Actual Change	Percent Change		
Airline																
Allegiant Air	143	156	-13	-8.3%	164	-21	-12.8%	621	647	-26	-4.0%	684	-63	-9.2%		
Miami Air	-	-	-	-	-	-	-	-	-	-	-	6	-6	-100.0%		
Sun Country	-	-	-	-	-	-	-	-	2	-2	-100.0%	1	-1	-100.0%		
Other Charters	-	1	-1	-100.0%	-	-	-	-	1	-1	-100.0%	26	-26	-100.0%		
<b>PASSENGER OPERATIONS TOTALS</b>	<b>143</b>	<b>157</b>	<b>-14</b>	<b>-8.9%</b>	<b>164</b>	<b>-21</b>	<b>-12.8%</b>	<b>621</b>	<b>650</b>	<b>-29</b>	<b>-4.5%</b>	<b>717</b>	<b>-96</b>	<b>-13.4%</b>		
AirBridgeCargo	-	-	-	-	9	-9	-100.0%	-	-	-	-	43	-43	-100.0%		
Asiana	-	-	-	-	-	-	-	-	-	-	-	-	-	-		
Cargolux	9	12	-3	-25.0%	18	-9	-50.0%	58	98	-40	-40.8%	115	-57	-49.6%		
Cathay Pacific	4	6	-2	-33.3%	17	-13	-76.5%	43	50	-7	-14.0%	111	-68	-61.3%		
China Airlines	-	-	-	-	11	-11	-100.0%	-	-	-	-	61	-61	-100.0%		
Emirates	5	4	1	25.0%	17	-12	-70.6%	29	124	-95	-76.6%	107	-78	-72.9%		
Ethiad	-	-	-	-	2	-2	-100.0%	-	-	-	-	60	-60	-100.0%		
FedEx	138	131	7	5.3%	136	2	1.5%	976	885	91	10.3%	961	15	1.6%		
Korean Air	-	14	-14	-100.0%	-	-	-	-	222	-222	-100.0%	-	-	-		
UPS	24	27	-3	-11.1%	41	-17	-41.5%	182	185	-3	-1.6%	295	-113	-38.3%		
Other Cargo Charters - Domestic	106	104	2	1.9%	66	40	60.6%	655	542	113	20.8%	376	279	74.2%		
Other Cargo Charters - International	13	32	-19	-59.4%	5	8	160.0%	202	219	-17	-7.8%	37	165	445.9%		
<b>CARGO OPERATIONS TOTALS</b>	<b>299</b>	<b>330</b>	<b>-31</b>	<b>-9.4%</b>	<b>322</b>	<b>-23</b>	<b>-7.1%</b>	<b>2,145</b>	<b>2,325</b>	<b>-180</b>	<b>-7.7%</b>	<b>2,166</b>	<b>-21</b>	<b>-1.0%</b>		
<b>AIRPORT TOTALS</b>	<b>442</b>	<b>487</b>	<b>-45</b>	<b>-9.2%</b>	<b>486</b>	<b>-44</b>	<b>-9.1%</b>	<b>2,766</b>	<b>2,975</b>	<b>-209</b>	<b>-7.0%</b>	<b>2,883</b>	<b>-117</b>	<b>-4.1%</b>		

Notes: Due to the COVID-19 pandemic that has impacted traffic since 1/2020, 2019 data is noted here for baseline comparisons

# RICKENBACKER INTERNATIONAL AIRPORT

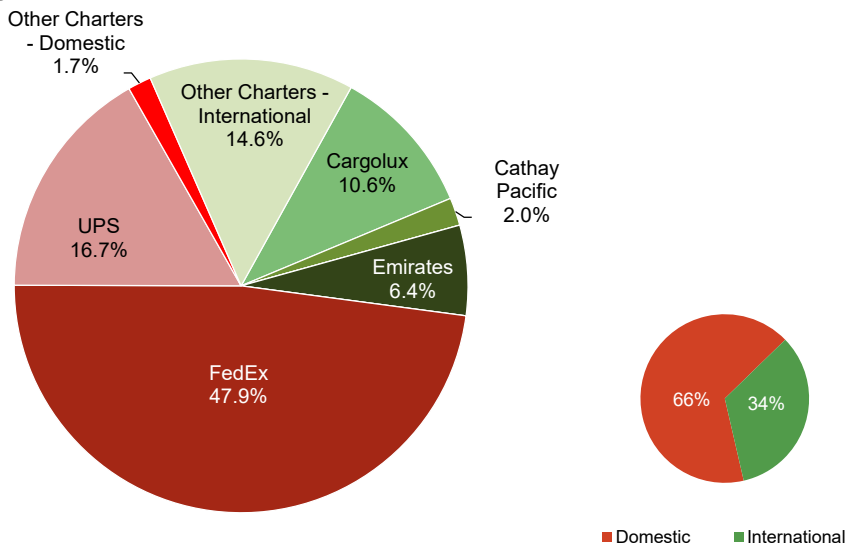
July 2023

## Monthly Cargo by Weights



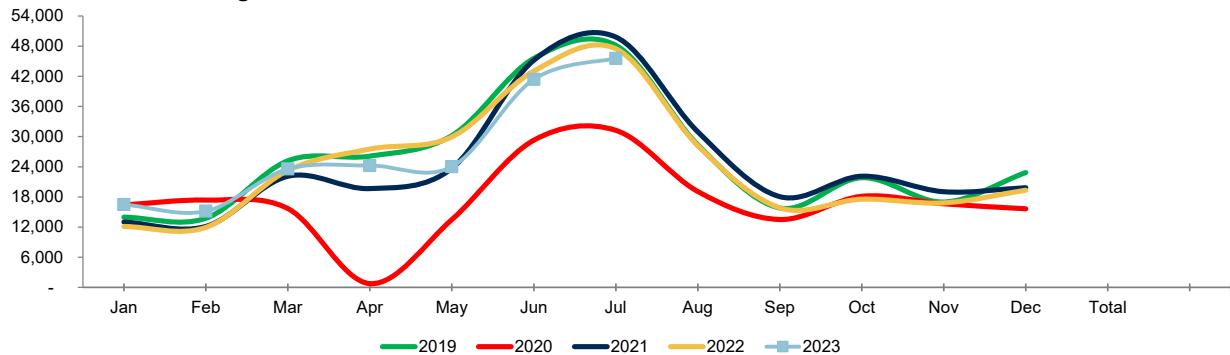
Note: Figures may not add up to 100% due to rounding

## Year to Date Cargo by Weights



Note: Figures may not add up to 100% due to rounding

## Total Passengers



Year	Jan	Feb	Mar	Apr	May	Jun	Jul	Aug	Sep	Oct	Nov	Dec	Total	Growth
2019	13,969	13,763	25,190	26,115	30,201	45,570	48,160	28,369	15,796	21,818	16,981	22,848	308,780	0.5%
2020	16,408	17,366	15,678	739	13,491	29,284	31,242	19,071	13,498	18,123	16,623	15,637	207,160	-32.9%
2021	13,016	12,126	22,110	19,655	23,696	45,199	49,810	30,952	18,048	22,114	19,029	19,829	295,584	42.7%
2022	12,115	11,934	23,272	27,520	29,943	43,038	47,481	28,193	15,821	17,543	16,804	19,336	293,000	-0.9%
2023	16,473	15,164	23,560	24,245	24,012	41,404	45,545							

23 vs. 22	36.0%	27.1%	1.2%	-11.9%	-19.8%	-3.8%	-4.1%							YE Peak Month
23 vs. 19	17.9%	10.2%	-6.5%	-7.2%	-20.5%	-9.1%	-5.4%							YE Lowest Month

# COMBINED AIRPORTS TRAFFIC REPORT

July 2023

8/22/2023

PASSENGERS	Total Passengers - Monthly							Total Passengers - Year to Date						
	Compared to 2022 (YOY)				Compared to 2019			Compared to 2022 (YOY)				Compared to 2019		
	Jul 2023	Jul 2022	Actual Change	Percent Change	Jul 2019	Actual Change	Percent Change	YTD 2023	YTD 2022	Actual Change	Percent Change	YTD 2019	Actual Change	Percent Change
Airports														
John Glenn International	779,878	679,423	100,455	14.8%	783,122	-3,244	-0.4%	4,793,370	4,252,162	541,208	12.7%	4,989,391	-196,021	-3.9%
Rickenbacker International	45,545	47,481	-1,936	-4.1%	48,160	-2,615	-5.4%	190,403	195,303	-4,900	-2.5%	202,968	-12,565	-6.2%
AIRPORT TOTALS	825,423	726,904	98,519	13.6%	831,282	-5,859	-0.7%	4,983,773	4,447,465	536,308	12.1%	5,192,359	-208,586	-4.0%
CARGO	Total Cargo (Freight and Mail) - Monthly							Total Cargo (Freight and Mail) - Year-To-Date						
Compared to 2022 (YOY)				Compared to 2019			Compared to 2022 (YOY)				Compared to 2019			
Jul 2023	Jul 2022	Actual Change	Percent Change	Jul 2019	Actual Change	Percent Change	YTD 2023	YTD 2022	Actual Change	Percent Change	YTD 2019	Actual Change	Percent Change	
Airports														
John Glenn International	817,621	650,322	167,299	25.7%	831,397	-13,776	-1.7%	5,417,228	5,342,574	74,654	1.4%	5,804,176	-386,948	-6.7%
Rickenbacker International	9,573,371	18,783,635	-9,210,264	-49.0%	22,834,341	-13,260,970	-58.1%	77,814,311	152,322,474	-74,508,163	-48.9%	160,384,479	-82,570,169	-51.5%
AIRPORT TOTALS	10,390,992	19,433,957	-9,042,965	-46.5%	23,665,738	-13,274,746	-56.1%	83,231,539	157,665,048	-74,433,509	-47.2%	166,188,655	-82,957,117	-49.9%
AIRCRAFT OPERATIONS	Actual Landing Operations - Monthly							Actual Landing Operations - Year to Date						
Compared to 2022 (YOY)				Compared to 2019			Compared to 2022 (YOY)				Compared to 2019			
Jul 2023	Jul 2022	Actual Change	Percent Change	Jul 2019	Actual Change	Percent Change	YTD 2023	YTD 2022	Actual Change	Percent Change	YTD 2019	Actual Change	Percent Change	
Airports														
John Glenn International	3,898	3,459	439	12.7%	4,488	-590	-13.1%	25,366	23,619	1,747	7.4%	29,581	-4,215	-14.2%
Rickenbacker International	442	487	-45	-9.2%	486	-44	-9.1%	2,766	2,975	-209	-7.0%	2,883	-117	-4.1%
AIRPORT TOTALS	4,340	3,946	394	10.0%	4,974	-634	-12.7%	28,132	26,594	1,538	5.8%	32,464	-4,332	-13.3%

Notes: Due to the COVID-19 pandemic that has impacted traffic since 10/2020, 2019 data is noted here for baseline comparisons