

Monthly Statistics Report

Report compiled from self-reported airline statistics

June 2023



COLUMBUS
REGIONAL AIRPORT AUTHORITY

JOHN GLENN COLUMBUS INTERNATIONAL AIRPORT

June 2023

7/25/2023

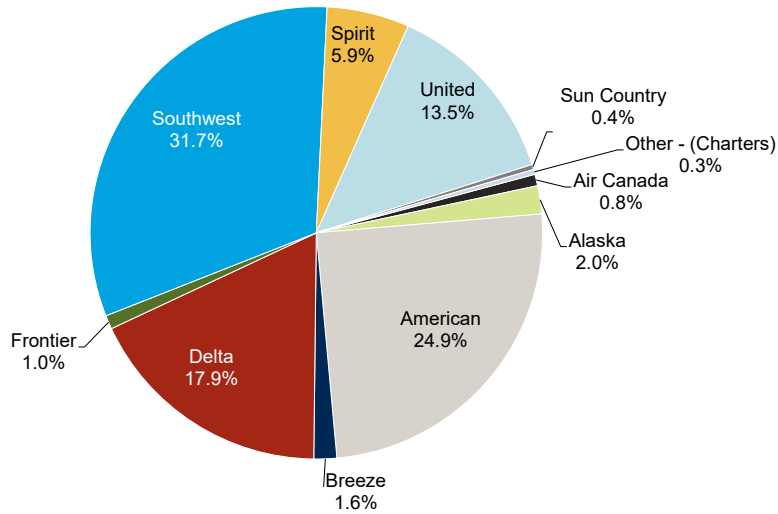
PASSENGERS	Total Passengers - Monthly								Total Passengers - Year to Date							
	Totals	Compared to 2022 (YOY)				Compared to 2019			Totals	Compared to 2022 (YOY)				Compared to 2019		
	Jun 2023	Jun 2022	Actual Change	Percent Change	Jun 2019	Actual Change	Percent Change	YTD 2023	YTD 2022	Actual Change	Percent Change	YTD 2019	Actual Change	Percent Change		
Airline																
Air Canada Express	6,398	6,304	94	1.5%	8,223	-1,825	-22.2%	20,916	16,053	4,863	30.3%	34,811	-13,895	-39.9%		
Alaska	15,528	10,316	5,212	50.5%	8,654	6,874	79.4%	55,291	43,437	11,854	27.3%	30,860	24,431	79.2%		
American	192,626	169,248	23,378	13.8%	190,750	1,876	1.0%	972,272	866,209	106,063	12.2%	998,008	-25,736	-2.6%		
Breeze	12,625	8,425	4,200	49.9%	-	12,625	-	34,783	33,511	1,272	3.8%	-	34,783	-		
Delta	138,258	121,832	16,426	13.5%	172,663	-34,405	-19.9%	699,151	633,549	65,602	10.4%	875,290	-176,139	-20.1%		
Frontier	7,601	8,245	-644	-7.8%	11,570	-3,969	-34.3%	33,142	46,907	-13,765	-29.3%	55,082	-21,940	-39.8%		
Southwest	245,690	236,876	8,814	3.7%	242,878	2,812	1.2%	1,325,706	1,200,411	125,295	10.4%	1,418,545	-92,839	-6.5%		
Spirit	45,607	35,921	9,686	27.0%	35,179	10,428	29.6%	270,048	295,871	-25,823	-8.7%	240,645	29,403	12.2%		
Sun Country	2,835	-	2,835	-	-	2,835	-	5,567	-	5,567	-	-	5,567	-		
United	104,253	92,639	11,614	12.5%	109,435	-5,182	-4.7%	579,736	420,986	158,750	37.7%	528,478	51,258	9.7%		
AIRLINES TOTALS	771,421	689,806	81,615	11.8%	779,352	-7,931	-1.0%	3,996,612	3,556,934	439,678	12.4%	4,181,719	-185,107	-4.4%		
CHARTER TOTALS	2,688	2,537	151	6.0%	4,479	-1,791	-40.0%	16,880	15,805	1,075	6.8%	24,550	-7,670	-31.2%		
AIRPORT TOTALS	774,109	692,343	81,766	11.8%	783,831	-9,722	-1.2%	4,013,492	3,572,739	440,753	12.3%	4,206,269	-192,777	-4.6%		
United YTD numbers updated with 1H2023 corrected volumes.																
CARGO	Total Cargo (Freight and Mail) - Monthly								Total Cargo (Freight and Mail) - Year-To-Date							
	Totals	Compared to 2022 (YOY)				Compared to 2019			Totals	Compared to 2022 (YOY)				Compared to 2019		
	Jun 2023	Jun 2022	Actual Change	Percent Change	Jun 2019	Actual Change	Percent Change	YTD 2023	YTD 2022	Actual Change	Percent Change	YTD 2019	Actual Change	Percent Change		
Airline																
Alaska	20,218	42,768	-22,550	-52.7%	43,827	-23,609	-53.9%	127,935	209,309	-81,374	-38.9%	110,774	17,161	15.5%		
American	36,033	42,413	-6,380	-15.0%	139,201	-103,168	-74.1%	248,409	499,000	-250,591	-50.2%	914,686	-666,277	-72.8%		
Delta	78,542	52,294	26,248	50.2%	144,855	-66,313	-45.8%	421,032	545,695	-124,663	-22.8%	949,889	-528,857	-55.7%		
Southwest	572,197	539,595	32,602	6.0%	361,808	210,389	58.1%	3,206,584	2,965,303	241,281	8.1%	2,367,074	839,510	35.5%		
United	81,404	37,264	44,140	118.5%	91,538	-10,134	-11.1%	455,789	268,245	187,544	69.9%	591,974	-136,185	-23.0%		
AIRLINES TOTALS	788,394	714,334	74,060	10.4%	781,229	7,165	0.9%	4,459,749	4,487,552	-27,803	-0.6%	4,934,397	-474,648	-9.6%		
CARGO AIRLINES TOTALS	14,818	3,308	11,510	347.9%	800	14,018	1752.3%	139,858	204,700	-64,842	-31.7%	38,382	101,476	264.4%		
AIRPORT TOTALS	803,212	717,642	85,570	11.9%	782,029	21,183	2.7%	4,599,607	4,692,252	-92,645	-2.0%	4,972,779	-373,172	-7.5%		
AIRCRAFT OPERATIONS	Actual Landing Operations - Monthly								Actual Landing Operations - Year to Date							
	Totals	Compared to 2022 (YOY)				Compared to 2019			Totals	Compared to 2022 (YOY)				Compared to 2019		
	Jun 2023	Jun 2022	Actual Change	Percent Change	Jun 2019	Actual Change	Percent Change	YTD 2023	YTD 2022	Actual Change	Percent Change	YTD 2019	Actual Change	Percent Change		
Airline																
Air Canada Express	58	77	-19	-24.7%	110	-52	-47.3%	233	246	-13	-5.3%	598	-365	-61.0%		
Alaska	47	30	17	56.7%	30	17	56.7%	177	141	36	25.5%	117	60	51.3%		
American	1,050	949	101	10.6%	1,345	-295	-21.9%	6,152	5,953	199	3.3%	7,585	-1,433	-18.9%		
Breeze	72	58	14	24.1%	-	72	-	206	258	-52	-20.2%	-	206	-		
Delta	751	690	61	8.8%	954	-203	-21.3%	4,139	4,027	112	2.8%	5,324	-1,185	-22.3%		
Frontier	23	23	0	0.0%	36	-13	-36.1%	100	170	-70	-41.2%	182	-82	-45.1%		
Southwest	1,006	858	148	17.2%	1,003	3	0.3%	5,617	4,763	854	17.9%	5,990	-373	-6.2%		
Spirit	151	113	38	33.6%	120	31	25.8%	938	1,052	-114	-10.8%	818	120	14.7%		
Sun Country	11	-	11	-	-	11	-	19	-	19	-	-	19	-		
United	552	540	12	2.2%	719	-167	-23.2%	3,299	2,930	369	12.6%	3,925	-626	-15.9%		
AIRLINES TOTALS	3,721	3,338	383	11.5%	4,317	-596	-13.8%	20,880	19,540	1,340	6.9%	24,539	-3,659	-14.9%		
CHARTER TOTALS	66	88	-22	-25.0%	62	4	6.5%	443	506	-63	-12.5%	522	-79	-15.1%		
CARGO AIRLINES TOTALS	16	6	10	166.7%	1	15	1500.0%	145	114	31	27.2%	32	113	353.1%		
AIRPORT TOTALS	3,803	3,432	371	10.8%	4,380	-577	-13.2%	21,468	20,160	1,308	6.5%	25,093	-3,625	-14.4%		

Notes: Due to the COVID-19 pandemic that has impacted traffic since 1Q2020, 2019 data is noted here for baseline comparisons

JOHN GLENN COLUMBUS INTERNATIONAL AIRPORT

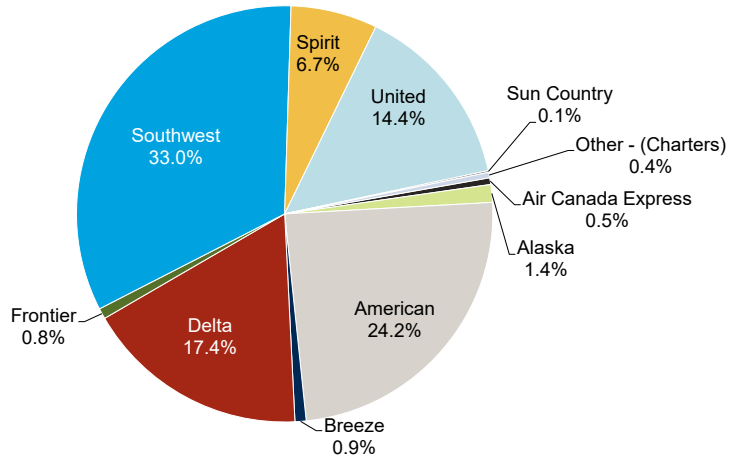
June 2023

Monthly by Passengers



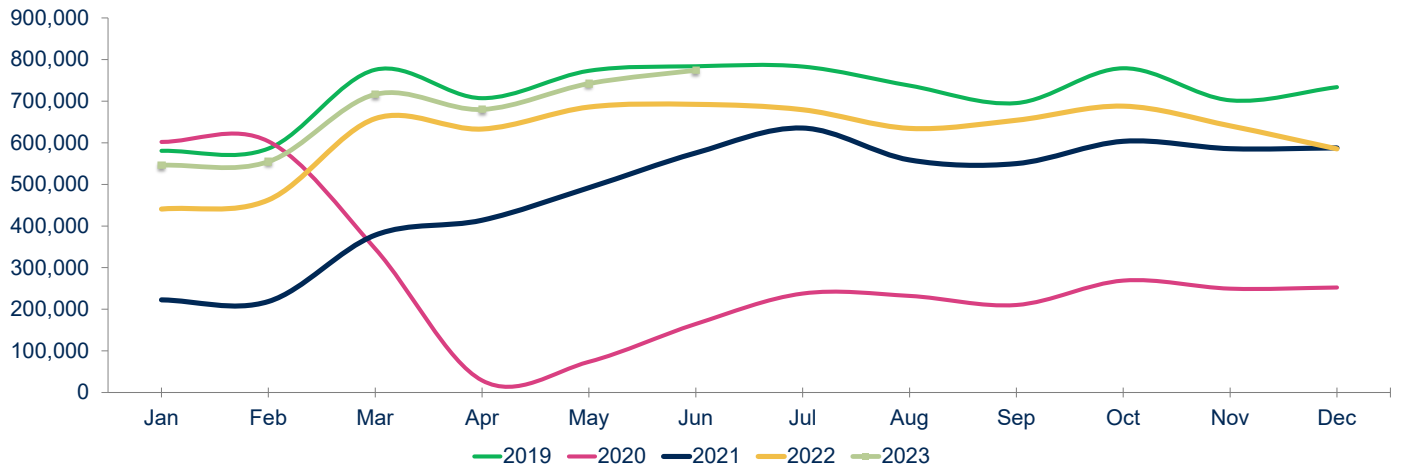
Notes:
Figures may not add up to 100% due to rounding

Year to Date by Passengers



Notes:
Figures may not add up to 100% due to rounding

Total Passengers



Year	Jan	Feb	Mar	Apr	May	Jun	Jul	Aug	Sep	Oct	Nov	Dec	Total	Growth
2019	580,704	586,025	775,533	707,185	772,991	783,831	783,122	737,440	695,409	779,088	702,070	733,710	8,637,108	6.1%
2020	602,022	603,467	345,418	28,943	73,769	164,700	237,756	232,096	210,233	268,914	249,522	252,287	3,269,127	-62.2%
2021	222,576	218,588	378,159	413,942	492,089	575,626	635,429	558,762	550,019	603,585	585,811	587,736	5,822,322	78.1%
2022	440,753	462,587	658,147	633,049	685,860	692,343	679,423	634,576	654,190	688,029	640,716	585,358	7,455,031	28.0%
2023	546,067	554,621	716,305	680,078	742,312	774,109							4,013,492	
23 vs 22	23.9%	19.9%	8.8%	7.4%	8.2%	11.8%								
23 vs. 19	-6.0%	-5.4%	-7.6%	-3.8%	-4.0%	-1.2%								

RICKENBACKER INTERNATIONAL AIRPORT

June 2023

7/25/2023

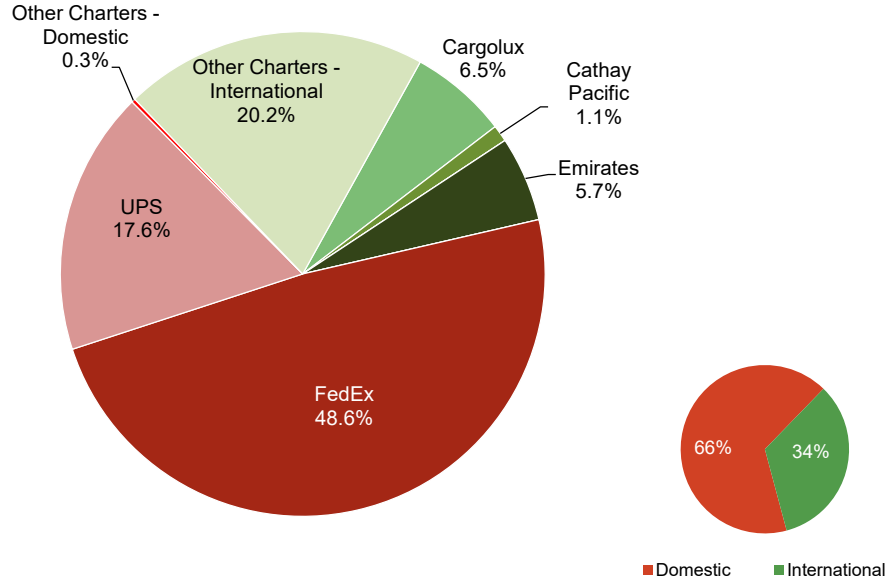
PASSENGERS	Total Passengers - Monthly							Total Passengers - Year to Date								
	Totals		Compared to 2021 (YOY)			Compared to 2019			Totals		Compared to 2021 (YOY)			Compared to 2019		
	Jun 2023	Jun 2022	Actual Change	Percent Change	Jun 2019	Actual Change	Percent Change	YTD 2023	YTD 2022	Actual Change	Percent Change	YTD 2019	Actual Change	Percent Change		
Airline	41,404	43,038	-1,634	-3.8%	45,333	-3,929	-8.7%	144,858	147,467	-2,609	-1.8%	151,960	-7,102	-4.7%		
Allegiant Air	-	-	-	-	-	-	-	-	-	-	-	775	-775	-100.0%		
Miami Air	-	-	-	-	-	-	-	-	355	-355	-100.0%	151	-151	-100.0%		
Sun Country	-	-	-	-	-	-	-	-	-	-	-	1,922	-1,922	-100.0%		
Other Charters	-	-	-	-	237	-237	-100.0%	-	-	-	-	-	-	-		
AIRPORT TOTALS	41,404	43,038	-1,634	-3.8%	45,570	-4,166	-9.1%	144,858	147,822	-2,964	-2.0%	154,808	-9,950	-6.4%		
CARGO	Total Cargo (Freight and Mail) - Monthly							Total Cargo (Freight and Mail) - Year-To-Date								
	Totals		Compared to 2021 (YOY)			Compared to 2019			Totals		Compared to 2021 (YOY)			Compared to 2019		
	Jun 2023	Jun 2022	Actual Change	Percent Change	Jun 2019	Actual Change	Percent Change	YTD 2023	YTD 2022	Actual Change	Percent Change	YTD 2019	Actual Change	Percent Change		
Airline	-	-	-	-	1,002,217	-1,002,217	-100.0%	-	-	-	-	9,513,829	-9,513,829	-100.0%		
AirBridgeCargo	-	-	-	-	-	-	-	-	-	-	-	-	-	-		
Asiana	-	-	-	-	-	-	-	-	-	-	-	-	-	-		
Cargolux	748,735	4,744,855	-3,996,120	-84.2%	3,162,752	-2,414,017	-76.3%	7,151,968	23,731,110	-16,579,142	-69.9%	19,800,073	-12,648,105	-63.9%		
Cathay Pacific	127,356	973,969	-846,613	-86.9%	1,581,669	-1,454,313	-91.9%	1,399,584	6,531,529	-5,131,945	-78.6%	10,787,503	-9,387,919	-87.0%		
China Airlines	-	-	-	-	1,385,771	-1,385,771	-100.0%	-	-	-	-	7,151,655	-7,151,655	-100.0%		
Emirates	649,848	788,074	-138,226	-17.5%	2,125,031	-1,475,183	-69.4%	4,083,478	12,121,048	-8,037,570	-66.3%	14,310,586	-10,227,108	-71.5%		
Ethiad	-	-	-	-	1,256,051	-1,256,051	-100.0%	-	-	-	-	12,273,140	-12,273,140	-100.0%		
FedEx	5,555,672	6,464,502	-908,830	-14.1%	6,644,997	-1,089,325	-16.4%	32,445,471	36,024,625	-3,579,154	-9.9%	42,423,859	-9,978,388	-23.5%		
Korean Air	-	2,141,140	-2,141,140	-100.0%	-	-	-	-	17,332,065	-17,332,065	-100.0%	-	-	-		
UPS	2,012,565	2,215,685	-203,120	-9.2%	2,266,225	-253,660	-11.2%	11,324,518	12,623,990	-1,299,472	-10.3%	13,026,533	-1,702,015	-13.1%		
Other Cargo Charters - Domestic	28,594	33,805	-5,211	-15.4%	297,484	-268,890	-90.4%	1,109,752	249,715	860,037	344.4%	1,663,233	-553,481	-33.3%		
Other Cargo Charters - International	2,314,797	5,501,785	-3,186,988	-57.9%	-	2,314,797	-	10,726,169	24,924,757	-14,198,588	-57.0%	6,599,728	4,126,441	62.5%		
AIRPORT TOTALS	11,437,567	22,863,815	-11,426,248	-50.0%	19,722,196	-8,284,629	-42.0%	68,240,940	133,538,839	-65,297,899	-48.9%	137,550,138	-69,309,198	-50.4%		
TOTAL DOMESTIC	7,596,831	8,713,992	-1,117,161	-12.8%	9,208,706	-1,611,875	-17.5%	44,879,741	48,898,330	-4,018,589	-8.2%	57,113,625	-12,233,884	-21.4%		
TOTAL INTERNATIONAL	3,840,736	14,149,823	-10,309,087	-72.9%	10,513,490	-6,672,754	-63.5%	23,361,199	84,640,509	-61,279,310	-72.4%	80,436,513	-57,075,314	-71.0%		
AIRPORT TOTALS	11,437,567	22,863,815	-11,426,248	-50.0%	19,722,196	-8,284,629	-42.0%	68,240,940	133,538,839	-65,297,899	-48.9%	137,550,138	-69,309,198	-50.4%		
AIRCRAFT OPERATIONS	Actual Landing Operations - Monthly							Actual Landing Operations - Year to Date								
	Totals		Compared to 2021 (YOY)			Compared to 2019			Totals		Compared to 2021 (YOY)			Compared to 2019		
	Jun 2023	Jun 2022	Actual Change	Percent Change	Jun 2019	Actual Change	Percent Change	YTD 2023	YTD 2022	Actual Change	Percent Change	YTD 2019	Actual Change	Percent Change		
Airline	133	138	-5	-3.6%	154	-21	-13.6%	478	491	-13	-2.6%	520	-42	-8.1%		
Allegiant Air	-	-	-	-	-	-	-	-	-	-	-	6	-6	-100.0%		
Miami Air	-	-	-	-	-	-	-	-	2	-2	-100.0%	1	-1	-100.0%		
Sun Country	-	-	-	-	-	-	-	-	-	-	-	26	-26	-100.0%		
Other Charters	-	-	-	-	1	-1	-100.0%	-	-	-	-	-	-	-		
PASSENGER OPERATIONS TOTALS	133	138	-5	-3.6%	155	-22	-14.2%	478	493	-15	-3.0%	553	-75	-13.6%		
AirBridgeCargo	-	-	-	-	8	-8	-100.0%	-	-	-	-	34	-34	-100.0%		
Asiana	-	-	-	-	-	-	-	-	-	-	-	-	-	-		
Cargolux	8	16	-8	-50.0%	17	-9	-52.9%	49	86	-37	-43.0%	97	-48	-49.5%		
Cathay Pacific	5	11	-6	-54.5%	15	-10	-66.7%	39	44	-5	-11.4%	94	-55	-58.5%		
China Airlines	-	-	-	-	9	-9	-100.0%	-	-	-	-	50	-50	-100.0%		
Emirates	4	6	-2	-33.3%	15	-11	-73.3%	24	120	-96	-80.0%	90	-66	-73.3%		
Ethiad	-	-	-	-	6	-6	-100.0%	-	-	-	-	58	-58	-100.0%		
FedEx	157	145	12	8.3%	134	23	17.2%	838	754	84	11.1%	825	13	1.6%		
Korean Air	-	29	-29	-100.0%	-	-	-	-	208	-208	-100.0%	-	-	-		
UPS	27	29	-2	-6.9%	42	-15	-35.7%	158	158	0	0.0%	254	-96	-37.8%		
Other Cargo Charters - Domestic	82	86	-4	-4.7%	53	29	54.7%	549	438	111	25.3%	310	239	77.1%		
Other Cargo Charters - International	38	37	1	2.7%	-	38	-	189	187	2	1.1%	32	157	490.6%		
CARGO OPERATIONS TOTALS	321	359	-38	-10.6%	299	22	7.4%	1,846	1,995	-149	-7.5%	1,844	2	0.1%		
AIRPORT TOTALS	454	497	-43	-8.7%	454	0	0.0%	2,324	2,488	-164	-6.6%	2,397	-73	-3.0%		

Notes: Due to the COVID-19 pandemic that has impacted traffic since 1Q2020, 2019 data is noted here for baseline comparisons

RICKENBACKER INTERNATIONAL AIRPORT

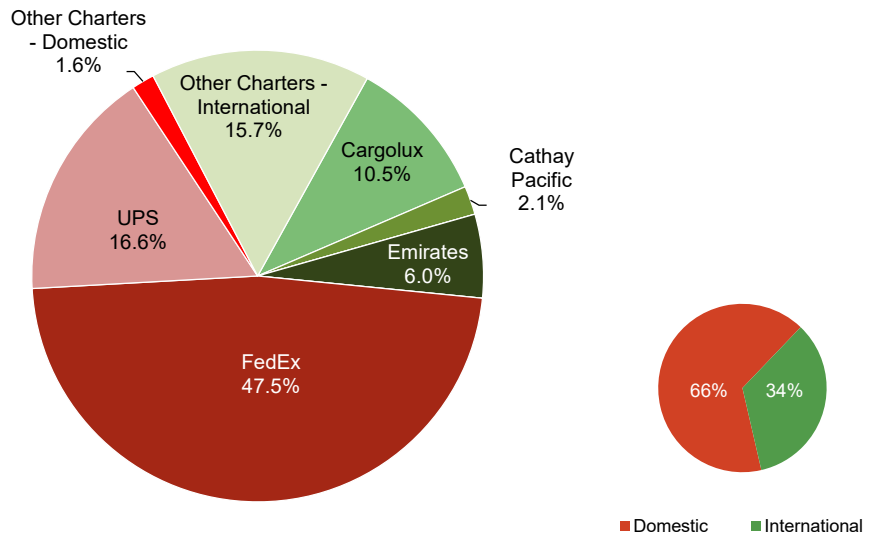
June 2023

Monthly Cargo by Weights



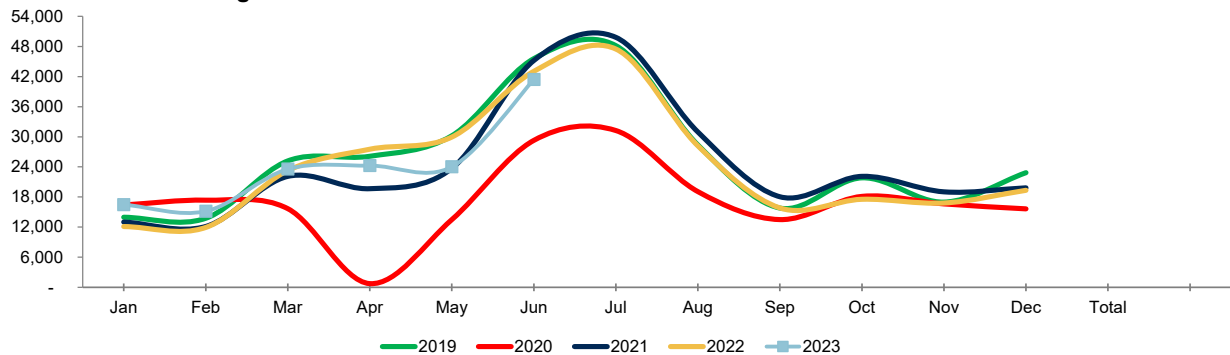
Note: Figures may not add up to 100% due to rounding

Year to Date Cargo by Weights



Note: Figures may not add up to 100% due to rounding

Total Passengers



Year	Jan	Feb	Mar	Apr	May	Jun	Jul	Aug	Sep	Oct	Nov	Dec	Total	Growth
2019	13,969	13,763	25,190	26,115	30,201	45,570	48,160	28,369	15,796	21,818	16,981	22,848	308,780	0.5%
2020	16,408	17,366	15,678	739	13,491	29,284	31,242	19,071	13,498	18,123	16,623	15,637	207,160	-32.9%
2021	13,016	12,126	22,110	19,655	23,696	45,199	49,810	30,952	18,048	22,114	19,029	19,829	295,584	42.7%
2022	12,115	11,934	23,272	27,520	29,943	43,038	47,481	28,193	15,821	17,543	16,804	19,336	293,000	-0.9%
2023	16,473	15,164	23,560	24,245	24,012	41,404								
23 vs. 22	36.0%	27.1%	1.2%	-11.9%	-19.8%	-3.8%								YE Peak Month
23 vs. 19	17.9%	10.2%	-6.5%	-7.2%	-20.5%	-9.1%								YE Lowest Month

COMBINED AIRPORTS TRAFFIC REPORT

June 2023

7/25/2023

PASSENGERS	Total Passengers - Monthly							Total Passengers - Year to Date						
	Compared to 2022 (YOY)				Compared to 2019			Compared to 2022 (YOY)				Compared to 2019		
	Jun 2023	Jun 2022	Actual Change	Percent Change	Jun 2019	Actual Change	Percent Change	YTD 2023	YTD 2022	Actual Change	Percent Change	YTD 2019	Actual Change	Percent Change
Airports														
John Glenn International	774,109	692,343	81,766	11.8%	783,831	-9,722	-1.2%	4,013,492	3,572,739	440,753	12.3%	4,206,269	-192,777	-4.6%
Rickenbacker International	41,404	43,038	-1,634	-3.8%	45,570	-4,166	-9.1%	144,858	147,822	-2,964	-2.0%	154,808	-9,950	-6.4%
AIRPORT TOTALS	815,513	735,381	80,132	10.9%	829,401	-13,888	-1.7%	4,158,350	3,720,561	437,789	11.8%	4,361,077	-202,727	-4.6%
CARGO	Total Cargo (Freight and Mail) - Monthly							Total Cargo (Freight and Mail) - Year-To-Date						
	Compared to 2022 (YOY)				Compared to 2019			Compared to 2022 (YOY)				Compared to 2019		
	Jun 2023	Jun 2022	Actual Change	Percent Change	Jun 2019	Actual Change	Percent Change	YTD 2023	YTD 2022	Actual Change	Percent Change	YTD 2019	Actual Change	Percent Change
Airports														
John Glenn International	803,212	717,642	85,570	11.9%	782,029	21,183	2.7%	4,599,607	4,692,252	-92,645	-2.0%	4,972,779	-373,172	-7.5%
Rickenbacker International	11,437,567	22,863,815	-11,426,248	-50.0%	19,722,196	-8,284,629	-42.0%	68,240,940	133,538,839	-65,297,899	-48.9%	137,550,138	-69,309,198	-50.4%
AIRPORT TOTALS	12,240,779	23,581,457	-11,340,678	-48.1%	20,504,225	-8,263,446	-40.3%	72,840,547	138,231,091	-65,390,544	-47.3%	142,522,917	-69,682,370	-48.9%
AIRCRAFT OPERATIONS	Actual Landing Operations - Monthly							Actual Landing Operations - Year to Date						
	Compared to 2022 (YOY)				Compared to 2019			Compared to 2022 (YOY)				Compared to 2019		
	Jun 2023	Jun 2022	Actual Change	Percent Change	Jun 2019	Actual Change	Percent Change	YTD 2023	YTD 2022	Actual Change	Percent Change	YTD 2019	Actual Change	Percent Change
Airports														
John Glenn International	3,803	3,432	371	10.8%	4,380	-577	-13.2%	21,468	20,160	1,308	6.5%	25,093	-3,625	-14.4%
Rickenbacker International	454	497	-43	-8.7%	454	-	0.0%	2,324	2,488	-164	-6.6%	2,397	-73	-3.0%
AIRPORT TOTALS	4,257	3,929	328	8.3%	4,834	-577	-11.9%	23,792	22,648	1,144	5.1%	27,490	-3,698	-13.5%

Notes: Due to the COVID-19 pandemic that has impacted traffic since 10/2020, 2019 data is noted here for baseline comparisons