

Monthly Statistics Report

Report compiled from self-reported airline statistics

January 2023



COLUMBUS
REGIONAL AIRPORT AUTHORITY

JOHN GLENN COLUMBUS INTERNATIONAL AIRPORT

January 2023

2/22/2023

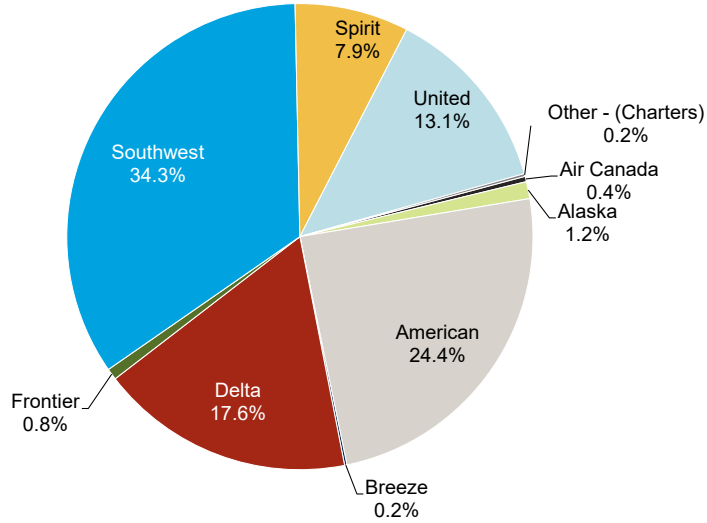
PASSENGERS	Total Passengers - Monthly							Total Passengers - Year to Date								
	Totals	Compared to 2022 (YOY)				Compared to 2019			Totals	Compared to 2022 (YOY)				Compared to 2019		
	Jan 2023	Jan 2022	Actual Change	Percent Change	Jan 2019	Actual Change	Percent Change	YTD 2023	YTD 2022	Actual Change	Percent Change	YTD 2019	Actual Change	Percent Change		
Airline																
Air Canada Express	2,004	645	1,359	210.7%	4,382	-2,378	-54.3%	2,004	645	1,359	210.7%	4,382	-2,378	-54.3%		
Alaska	6,269	1,329	4,940	371.7%	-	6,269	#DIV/0!	6,269	1,329	4,940	371.7%	-	6,269	#DIV/0!		
American	129,717	106,095	23,622	22.3%	136,635	-6,918	-5.1%	129,717	106,095	23,622	22.3%	136,635	-6,918	-5.1%		
Breeze	862	3,106	-2,244	-72.2%	-	862	-	862	3,106	-2,244	-72.2%	-	862	-		
Delta	93,847	76,895	16,952	22.0%	116,805	-22,958	-19.7%	93,847	76,895	16,952	22.0%	116,805	-22,958	-19.7%		
Frontier	4,186	3,990	196	4.9%	6,680	-2,494	-37.3%	4,186	3,990	196	4.9%	6,680	-2,494	-37.3%		
Southwest	182,656	151,833	30,823	20.3%	206,028	-23,372	-11.3%	182,656	151,833	30,823	20.3%	206,028	-23,372	-11.3%		
Spirit	42,057	44,373	-2,316	-5.2%	35,643	6,414	18.0%	42,057	44,373	-2,316	-5.2%	35,643	6,414	18.0%		
United	69,560	48,936	20,624	42.1%	71,180	-1,620	-2.3%	69,560	48,936	20,624	42.1%	71,180	-1,620	-2.3%		
AIRLINES TOTALS	531,158	437,202	93,956	21.5%	577,353	-46,195	-8.0%	531,158	437,202	93,956	21.5%	577,353	-46,195	-8.0%		
CHARTER TOTALS	999	3,168	-2,169	-68.5%	3,351	-2,352	-70.2%	999	3,168	-2,169	-68.5%	3,351	-2,352	-70.2%		
AIRPORT TOTALS	532,157	440,370	91,787	20.8%	580,704	-48,547	-8.4%	532,157	440,370	91,787	20.8%	580,704	-48,547	-8.4%		
CARGO	Total Cargo (Freight and Mail) - Monthly							Total Cargo (Freight and Mail) - Year-To-Date								
	Totals	Compared to 2022 (YOY)				Compared to 2019			Totals	Compared to 2022 (YOY)				Compared to 2019		
	Jan 2023	Jan 2022	Actual Change	Percent Change	Jan 2019	Actual Change	Percent Change	YTD 2023	YTD 2022	Actual Change	Percent Change	YTD 2019	Actual Change	Percent Change		
Airline																
Alaska	25,077	29,154	-4,077	-14.0%	-	25,077	-	25,077	4,819	20,258	420.4%	-	25,077	-		
American	48,249	182,830	-134,581	-73.6%	163,328	-115,079	-70.5%	48,249	101,216	-52,967	-52.3%	163,328	-115,079	-70.5%		
Delta	-	107,095	-107,095	-100.0%	180,543	-180,543	-100.0%	-	92,104	-92,104	-100.0%	180,543	-180,543	-100.0%		
Southwest	397,832	273,848	123,984	45.3%	460,510	-62,678	-13.6%	397,832	456,221	-58,389	-12.8%	460,510	-62,678	-13.6%		
United	84,304	44,170	40,134	90.9%	115,881	-31,577	-27.2%	84,304	83,540	764	0.9%	115,881	-31,577	-27.2%		
AIRLINES TOTALS	555,462	637,097	-81,635	-12.8%	920,262	-364,800	-39.6%	555,462	737,900	-182,438	-24.7%	920,262	-364,800	-39.6%		
CARGO AIRLINES TOTALS	2,479	1,880	599	31.9%	6,926	-4,447	-64.2%	2,479	4,595	-2,116	-46.1%	6,926	-4,447	-64.2%		
AIRPORT TOTALS	557,941	638,977	-81,036	-12.7%	927,188	-369,247	-39.8%	557,941	742,495	-184,554	-24.9%	927,188	-369,247	-39.8%		
AIRCRAFT OPERATIONS	Actual Landing Operations - Monthly							Actual Landing Operations - Year to Date								
	Totals	Compared to 2022 (YOY)				Compared to 2019			Totals	Compared to 2022 (YOY)				Compared to 2019		
	Jan 2023	Jan 2022	Actual Change	Percent Change	Jan 2019	Actual Change	Percent Change	YTD 2023	YTD 2022	Actual Change	Percent Change	YTD 2019	Actual Change	Percent Change		
Airline																
Air Canada Express	28	19	9	47.4%	100	-72	-72.0%	28	19	9	47.4%	100	-72	-72.0%		
Alaska	24	6	18	300.0%	-	24	-	24	6	18	300.0%	-	24	-		
American	991	1,029	-38	-3.7%	1,205	-214	-17.8%	991	1,029	-38	-3.7%	1,205	-214	-17.8%		
Breeze	5	32	-27	-84.4%	-	5	-	5	32	-27	-84.4%	-	5	-		
Delta	625	658	-33	-5.0%	810	-185	-22.8%	625	658	-33	-5.0%	810	-185	-22.8%		
Frontier	15	24	-9	-37.5%	25	-10	-40.0%	15	24	-9	-37.5%	25	-10	-40.0%		
Southwest	877	736	141	19.2%	956	-79	-8.3%	877	736	141	19.2%	956	-79	-8.3%		
Spirit	164	203	-39	-19.2%	140	24	17.1%	164	203	-39	-19.2%	140	24	17.1%		
United	537	436	101	23.2%	600	-63	-10.5%	537	436	101	23.2%	600	-63	-10.5%		
AIRLINES TOTALS	3,266	3,143	123	3.9%	3,836	-570	-14.9%	3,266	3,143	123	3.9%	3,836	-570	-14.9%		
CHARTER TOTALS	94	108	-14	-13.0%	103	-9	-8.7%	94	108	-14	-13.0%	103	-9	-8.7%		
CARGO AIRLINES TOTALS	15	12	3	25.0%	12	3	25.0%	15	12	3	25.0%	12	3	25.0%		
AIRPORT TOTALS	3,375	3,263	112	3.4%	3,951	-576	-14.6%	3,375	3,263	112	3.4%	3,951	-576	-14.6%		

Notes:
 Due to the COVID-19 pandemic that has impacted traffic since 1Q2020, 2019 data is noted here for baseline comparisons
 Air Canada Express service reinstated July 1, 2022
 Breeze Airways service began July 3, 2022

JOHN GLENN COLUMBUS INTERNATIONAL AIRPORT

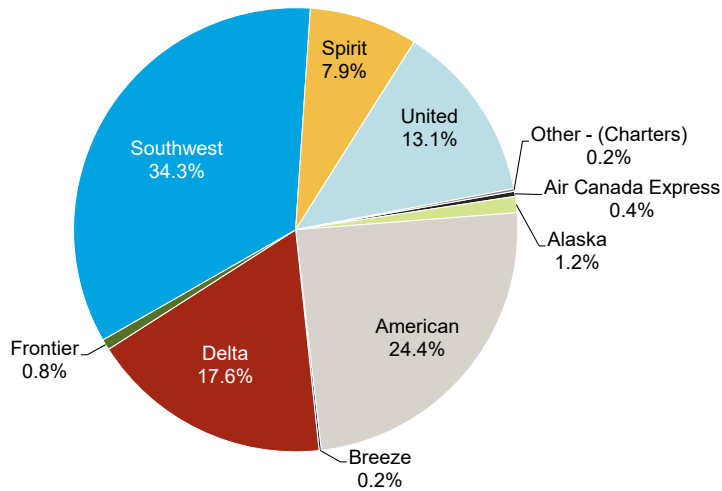
January 2023

Monthly by Passengers



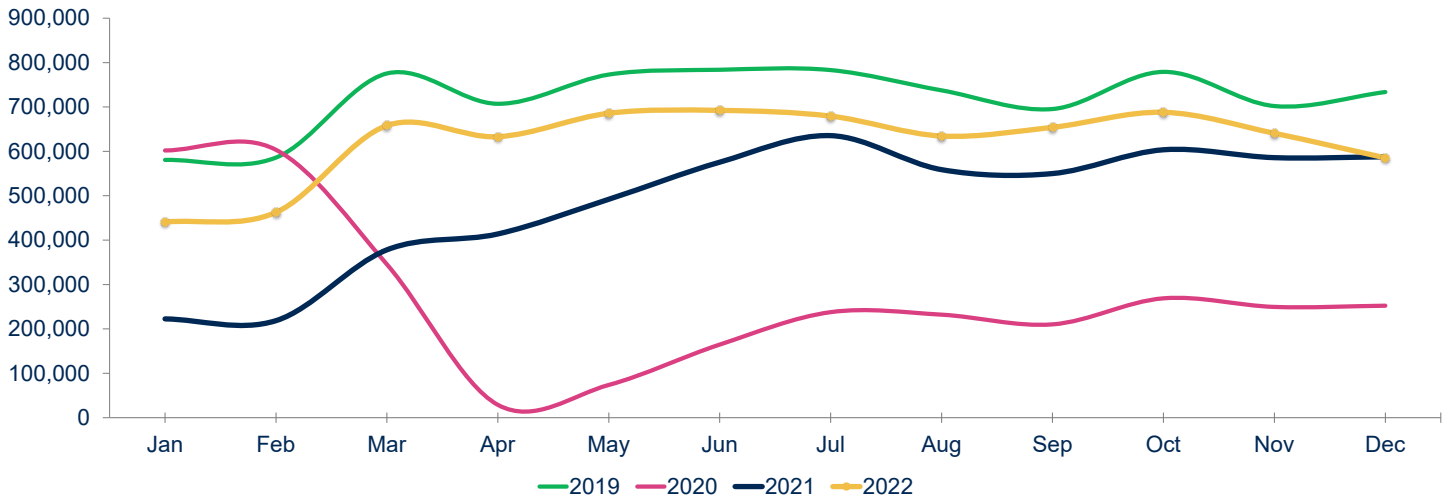
Notes:
Figures may not add up to 100% due to rounding

Year to Date by Passengers



Notes:
Figures may not add up to 100% due to rounding

Total Passengers



Year	Jan	Feb	Mar	Apr	May	Jun	Jul	Aug	Sep	Oct	Nov	Dec	Total	Growth
2019	580,704	586,025	775,533	707,185	772,991	783,831	783,122	737,440	695,409	779,088	702,070	733,710	8,637,108	6.1%
2020	602,022	603,467	345,418	28,943	73,769	164,700	237,756	232,096	210,233	268,914	249,522	252,287	3,269,127	-62.2%
2021	222,576	218,588	378,159	413,942	492,089	575,626	635,429	558,762	550,019	603,585	585,811	587,736	5,822,322	78.1%
2022	440,753	462,587	658,147	633,049	685,860	692,343	679,423	634,576	654,190	688,029	640,716	585,358	7,455,031	28.0%
22 vs. 21	98.0%	111.6%	74.0%	52.9%	39.4%	20.3%	6.9%	13.6%	18.9%	14.0%	9.4%	-0.4%	YE Peak Month	
22 vs. 19	-24.1%	-21.1%	-15.1%	-10.5%	-11.3%	-11.7%	-13.2%	-13.9%	-5.9%	-11.7%	-8.7%	-20.2%	YE Lowest Month	

RICKENBACKER INTERNATIONAL AIRPORT

January 2023

2/22/2023

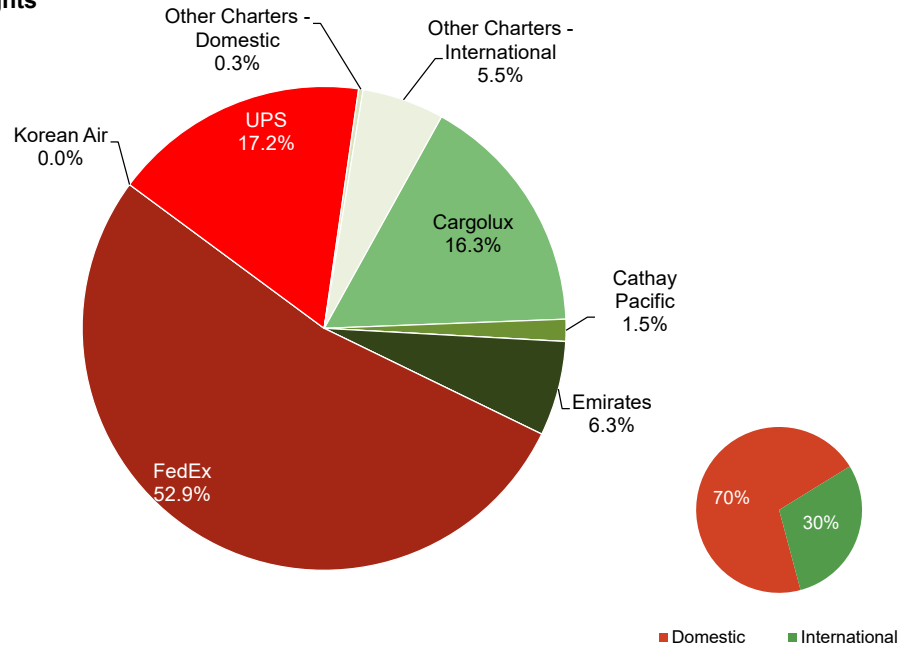
RICKENBACKER INTERNATIONAL AIRPORT														
January 2023														
2/22/2023														
PASSENGERS	Total Passengers - Monthly							Total Passengers - Year to Date						
	Totals		Compared to 2022 (YOY)		Compared to 2019			Totals		Compared to 2022 (YOY)		Compared to 2019		
	Jan 2023	Jan 2022	Actual Change	Percent Change	Jan 2019	Actual Change	Percent Change	YTD 2023	YTD 2022	Actual Change	Percent Change	YTD 2019	Actual Change	Percent Change
Airline														
Allegiant Air	16,473	12,115	4,358	36.0%	12,401	4,072	32.8%	16,473	12,115	4,358	36.0%	12,401	4,072	32.8%
Miami Air	-	-	-	-	775	-775	-100.0%	-	-	-	-	775	-775	-100.0%
Sun Country	-	-	-	-	-	-	-	-	-	-	-	-	-	-
Other Charters	-	-	-	-	793	-793	-100.0%	-	-	0	-	793	-793	-100.0%
AIRPORT TOTALS	16,473	12,115	4,358	36.0%	13,969	2,504	17.9%	16,473	12,115	4,358	36.0%	13,969	2,504	17.9%
CARGO	Total Cargo (Freight and Mail) - Monthly							Total Cargo (Freight and Mail) - Year-To-Date						
	Totals		Compared to 2022 (YOY)		Compared to 2019			Totals		Compared to 2022 (YOY)		Compared to 2019		
	Jan 2023	Jan 2022	Actual Change	Percent Change	Jan 2019	Actual Change	Percent Change	YTD 2023	YTD 2022	Actual Change	Percent Change	YTD 2019	Actual Change	Percent Change
Airline														
AirBridgeCargo	-	-	-	-	743,339	-743,339	-100.0%	-	-	-	-	743,339	-743,339	-100.0%
Asiana	-	-	-	-	-	-	-	-	-	-	-	-	-	-
Cargolux	1,670,845	4,119,088	-2,448,243	-59.4%	4,090,926	-2,420,081	-59.2%	1,670,845	4,119,088	-2,448,243	-59.4%	4,090,926	-2,420,081	-59.2%
Cathay Pacific	150,664	1,206,355	-1,055,691	-87.5%	1,961,146	-1,810,482	-92.3%	150,664	1,206,355	-1,055,691	-87.5%	1,961,146	-1,810,482	-92.3%
China Airlines	-	-	-	-	1,301,204	-1,301,204	-100.0%	-	-	-	-	1,301,204	-1,301,204	-100.0%
Emirates	647,553	2,987,646	-2,340,093	-78.3%	2,547,448	-1,899,895	-74.6%	647,553	2,987,646	-2,340,093	-78.3%	2,547,448	-1,899,895	-74.6%
Etihad	-	-	-	-	2,497,511	-2,497,511	-100.0%	-	-	-	-	2,497,511	-2,497,511	-100.0%
FedEx	5,411,805	5,552,741	-140,936	-2.5%	7,412,995	-2,001,190	-27.0%	5,411,805	5,552,741	-140,936	-2.5%	7,412,995	-2,001,190	-27.0%
Korean Air	-	4,277,029	-4,277,029	-100.0%	-	-	-	-	4,277,029	-4,277,029	-100.0%	-	-	-
UPS	1,753,877	1,901,932	-148,055	-7.8%	2,089,785	-335,908	-16.1%	1,753,877	1,901,932	-148,055	-7.8%	2,089,785	-335,908	-16.1%
Other Cargo Charters - Domestic	30,815	26,750	4,065	15.2%	19,849	10,966	55.2%	30,815	26,750	4,065	15.2%	19,849	10,966	55.2%
Other Cargo Charters - International	559,707	4,741,242	-4,181,535	-88.2%	3,216,887	-2,657,180	-82.6%	559,707	4,741,242	-4,181,535	-88.2%	3,216,887	-2,657,180	-82.6%
AIRPORT TOTALS	10,225,266	24,812,783	-14,587,517	-58.8%	25,881,090	-15,655,824	-60.5%	10,225,266	24,812,783	-14,587,517	-58.8%	25,881,090	-15,655,824	-60.5%
TOTAL DOMESTIC														
	7,196,497	7,481,423	-284,926	-3.8%	9,522,629	-2,326,132	-24.4%	7,196,497	7,481,423	-284,926	-3.8%	9,522,629	-2,326,132	-24.4%
TOTAL INTERNATIONAL														
	3,028,769	17,331,360	-14,302,591	-82.5%	16,358,461	-13,329,692	-81.5%	3,028,769	17,331,360	-14,302,591	-82.5%	16,358,461	-13,329,692	-81.5%
AIRPORT TOTALS	10,225,266	24,812,783	-14,587,517	-58.8%	25,881,090	-15,655,824	-60.5%	10,225,266	24,812,783	-14,587,517	-58.8%	25,881,090	-15,655,824	-60.5%
AIRCRAFT OPERATIONS	Actual Landing Operations - Monthly							Actual Landing Operations - Year to Date						
	Totals		Compared to 2022 (YOY)		Compared to 2019			Totals		Compared to 2022 (YOY)		Compared to 2019		
	Jan 2023	Jan 2022	Actual Change	Percent Change	Jan 2019	Actual Change	Percent Change	YTD 2023	YTD 2022	Actual Change	Percent Change	YTD 2019	Actual Change	Percent Change
Airline														
Allegiant Air	55	44	11	25.0%	41	14	34.1%	55	44	11	25.0%	41	14	34.1%
Miami Air	-	-	-	-	6	-6	-100.0%	-	-	-	-	6	-6	-100.0%
Sun Country	-	-	-	-	-	-	-	-	-	-	-	-	-	-
Other Charters	-	-	-	-	4	-4	-100.0%	-	-	-	-	4	-4	-100.0%
PASSENGER OPERATIONS TOTALS	55	44	11	25.0%	51	4	7.8%	55	44	11	25.0%	51	4	7.8%
AirBridgeCargo	-	-	-	-	2	-2	-100.0%	-	-	-	-	2	-2	-100.0%
Asiana	-	-	-	-	-	-	-	-	-	-	-	-	-	-
Cargolux	9	14	-5	-35.7%	17	-8	-47.1%	9	14	-5	-35.7%	17	-8	-47.1%
Cathay Pacific	5	5	-	0.0%	16	-11	-68.8%	5	5	-	0.0%	16	-11	-68.8%
China Airlines	-	-	-	-	9	-9	-100.0%	-	-	-	-	9	-9	-100.0%
Emirates	4	34	-30	-88.2%	14	-10	-71.4%	4	34	-30	-88.2%	14	-10	-71.4%
Etihad	-	-	-	-	11	-11	-100.0%	-	-	-	-	11	-11	-100.0%
FedEx	126	123	3	2.4%	142	-16	-11.3%	126	123	3	2.4%	142	-16	-11.3%
Korean Air	-	51	-51	-100.0%	-	-	-	-	51	-51	-100.0%	-	-	-
UPS	25	24	1	4.2%	43	-18	-41.9%	25	24	1	4.2%	43	-18	-41.9%
Other Cargo Charters - Domestic	95	62	33	53.2%	51	44	86.3%	95	62	33	53.2%	51	44	86.3%
Other Cargo Charters - International	9	34	-25	-73.5%	16	-7	-43.8%	9	34	-25	-73.5%	16	-7	-43.8%
CARGO OPERATIONS TOTALS	273	347	-74	-21.3%	321	-48	-15.0%	273	347	-74	-21.3%	321	-48	-15.0%
AIRPORT TOTALS	328	391	-63	-16.1%	372	-44	-11.8%	328	391	-63	-16.1%	372	-44	-11.8%

Notes: Due to the COVID-19 pandemic that has impacted traffic since 1/20/20, 2019 data is noted here for baseline comparisons

RICKENBACKER INTERNATIONAL AIRPORT

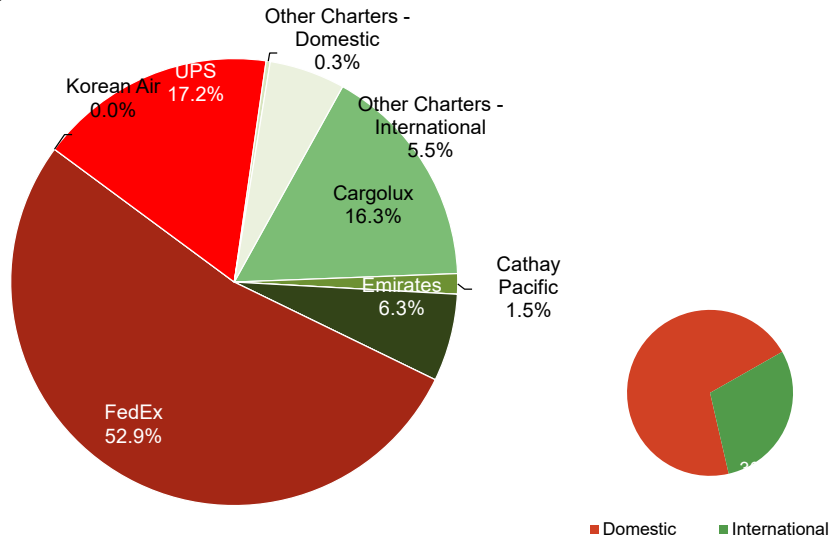
January 2023

Monthly Cargo by Weights



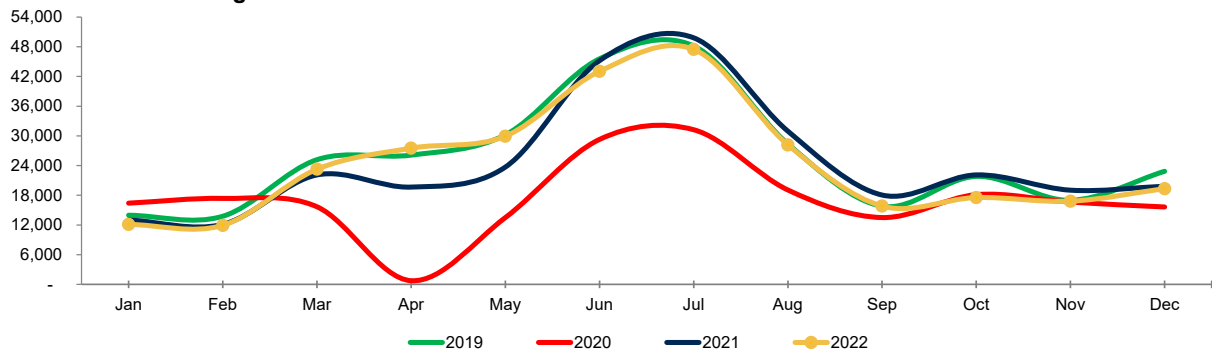
Note: Figures may not add up to 100% due to rounding

Year to Date Cargo by Weights



Note: Figures may not add up to 100% due to rounding

Total Passengers



Year	Jan	Feb	Mar	Apr	May	Jun	Jul	Aug	Sep	Oct	Nov	Dec	Total	Growth
2019	13,969	13,763	25,190	26,115	30,201	45,570	48,160	28,369	15,796	21,818	16,981	22,848	308,780	0.5%
2020	16,408	17,366	15,678	739	13,491	29,284	31,242	19,071	13,498	18,123	15,623	15,637	207,160	-32.9%
2021	13,016	12,126	22,110	19,655	23,696	45,199	49,810	30,952	18,048	22,114	19,029	19,829	295,584	42.7%
2022	12,115	11,934	23,272	27,520	29,943	43,038	47,481	28,193	15,821	17,543	16,804	19,336	293,000	-0.9%
22 vs. 21	-6.9%	-1.6%	5.3%	40.0%	26.4%	-4.8%	-4.7%	-8.9%	-12.3%	-20.7%	-11.7%	-2.5%	YE Peak Month	
22 vs. 19	-13.3%	-13.3%	-7.6%	5.4%	-0.9%	-5.6%	-1.4%	-0.6%	0.2%	-19.6%	-1.0%	-15.4%	YE Lowest Month	

COMBINED AIRPORTS TRAFFIC REPORT

January 2023

2/22/2023

PASSENGERS	Total Passengers - Monthly							Total Passengers - Year to Date						
	Compared to 2022 (YOY)				Compared to 2019			Compared to 2022 (YOY)				Compared to 2019		
	Jan 2023	Jan 2022	Actual Change	Percent Change	Jan 2019	Actual Change	Percent Change	YTD 2023	YTD 2022	Actual Change	Percent Change	YTD 2019	Actual Change	Percent Change
Airports														
John Glenn International	532,157	440,370	91,787	20.8%	580,704	-48,547	-8.4%	532,157	440,370	91,787	20.8%	580,704	-48,547	-8.4%
Rickenbacker International	16,473	12,115	4,358	36.0%	13,969	2,504	17.9%	16,473	12,115	4,358	36.0%	13,969	2,504	17.9%
AIRPORT TOTALS	548,630	452,485	96,145	21.2%	594,673	-46,043	-7.7%	548,630	452,485	96,145	21.2%	594,673	-46,043	-7.7%
CARGO	Total Cargo (Freight and Mail) - Monthly							Total Cargo (Freight and Mail) - Year-To-Date						
	Compared to 2022 (YOY)				Compared to 2019			Compared to 2022 (YOY)				Compared to 2019		
	Jan 2023	Jan 2022	Actual Change	Percent Change	Jan 2019	Actual Change	Percent Change	YTD 2023	YTD 2022	Actual Change	Percent Change	YTD 2019	Actual Change	Percent Change
Airports														
John Glenn International	557,941	638,977	-81,036	-12.7%	927,188	-369,247	-39.8%	557,941	742,495	-184,554	-24.9%	927,188	-369,247	-39.8%
Rickenbacker International	10,225,266	24,812,783	-14,587,517	-58.8%	25,881,090	-15,655,824	-60.5%	10,225,266	24,812,783	-14,587,517	-58.8%	25,881,090	-15,655,824	-60.5%
AIRPORT TOTALS	10,783,207	25,451,760	-14,668,553	-57.6%	26,808,278	-16,025,071	-59.8%	10,783,207	25,555,278	-14,772,071	-57.8%	26,808,278	-16,025,071	-59.8%
AIRCRAFT OPERATIONS	Actual Landing Operations - Monthly							Actual Landing Operations - Year to Date						
	Compared to 2022 (YOY)				Compared to 2019			Compared to 2022 (YOY)				Compared to 2019		
	Jan 2023	Jan 2022	Actual Change	Percent Change	Jan 2019	Actual Change	Percent Change	YTD 2023	YTD 2022	Actual Change	Percent Change	YTD 2019	Actual Change	Percent Change
Airports														
John Glenn International	3,375	3,263	112	3.4%	3,951	-576	-14.6%	3,375	3,263	112	3.4%	3,951	-576	-14.6%
Rickenbacker International	328	391	-63	-16.1%	372	-44	-11.8%	55	391	-336	-85.9%	372	-317	-85.2%
AIRPORT TOTALS	3,703	3,654	49	1.3%	4,323	-620	-14.3%	3,430	3,654	-224	-6.1%	4,323	-893	-20.7%

Notes: Due to the COVID-19 pandemic that has impacted traffic since 10/2020, 2019 data is noted here for baseline comparisons

COLUMBUS REGIONAL AIRPORT AUTHORITY - JOHN GLENN COLUMBUS INTERNATIONAL AIRPORT
MONTHLY TRAFFIC REPORT
January 2023

2/22/2023

Operating Airline	Brand Airline	Terminal / Non-Terminal	Concourse	Sig / Non-Sig	Scheduled / Charter / Freight	Pax - Enplane	Pax - Deplane	Mail - Enplane	Mail - Deplane	Freight - Enplane	Freight - Deplane	Landings	Landed Weight
TERMINAL PASSENGER FLIGHT ACTIVITY: Scheduled and charter flights operating from the CMH terminal													
Terminal - Scheduled Passenger Flight Activity													
Air Canada Express - Jazz	Air Canada	Terminal	Concourse B	Signatory	Scheduled	966	1,038	-	-	-	-	28	1,316,000
Alaska Airlines	Alaska	Terminal	Concourse C	Signatory	Scheduled	3,080	3,189	-	-	20,556	4,521	24	3,703,600
American Airlines	American	Terminal	Concourse B	Signatory	Scheduled	30,525	32,820	2,032	28,501	3,957	9,755	256	37,922,928
American - Envoy Air	American	Terminal	Concourse B	Signatory	Scheduled	12,957	12,908	-	-	846	1,088	243	18,157,410
American - Piedmont	American	Terminal	Concourse B	Signatory	Scheduled	25	18	-	-	-	-	1	43,650
American - PSA	American	Terminal	Concourse B	Signatory	Scheduled	8,274	8,066	-	-	441	741	138	10,258,500
American - Republic	American	Terminal	Concourse B	Signatory	Scheduled	11,627	12,497	-	-	647	241	353	26,383,430
Breeze Airways	Breeze	Terminal	Concourse C	Signatory	Scheduled	390	472	-	-	-	-	5	570,110
Delta Air Lines	Delta	Terminal	Concourse C	Signatory	Scheduled	25,652	25,257	-	-	-	-	194	28,132,509
Delta Connection - Endeavor	Delta	Terminal	Concourse C	Signatory	Scheduled	1,106	1,290	-	-	-	-	20	1,502,000
Delta Connection - Republic	Delta	Terminal	Concourse C	Signatory	Scheduled	14,088	14,862	-	-	-	-	312	23,174,904
Delta Connection - Skywest	Delta	Terminal	Concourse C	Signatory	Scheduled	5,927	5,665	-	-	-	-	99	7,441,368
Frontier Airlines	Frontier	Terminal	Concourse C	Signatory	Scheduled	1,835	2,351	-	-	-	-	15	2,232,626
Southwest Airlines	Southwest	Terminal	Concourse A	Signatory	Scheduled	91,994	90,662	-	-	237,976	159,856	877	119,565,800
Spirit Airlines	Spirit	Terminal	Concourse B	Signatory	Scheduled	20,513	21,544	-	-	-	-	164	23,600,062
United Airlines	United	Terminal	Concourse B	Signatory	Scheduled	21,262	21,916	30,130	9,616	4,003	40,555	187	27,336,800
United Express - Air Wisconsin	United	Terminal	Concourse B	Signatory	Scheduled	1,425	1,609	-	-	-	-	35	1,645,000
United Express - CommutAir	United	Terminal	Concourse B	Signatory	Scheduled	1,205	1,073	-	-	-	-	27	1,188,000
United Express - GoJet	United	Terminal	Concourse B	Signatory	Scheduled	1,062	964	-	-	-	-	22	1,342,000
United Express - Mesa	United	Terminal	Concourse B	Signatory	Scheduled	2,118	2,836	-	-	-	-	41	3,075,000
United Express - Republic	United	Terminal	Concourse B	Signatory	Scheduled	3,400	4,354	-	-	-	-	177	13,074,304
United Express - Skywest	United	Terminal	Concourse B	Signatory	Scheduled	3,266	3,070	-	-	-	-	48	3,597,936
Terminal - Charter Passenger Flight Activity													
Sun Country	Sun Country	Terminal	Concourse C	Non-Signatory	Charter	180	180	-	-	-	-	2	292,600
Swift Air	Swift Air	Terminal	Concourse C	Non-Signatory	Charter	-	-	-	-	-	-	1	121,000
NON-TERMINAL FLIGHT ACTIVITY: Flights operating at a location other than the CMH terminal													
Non-Terminal - Charter Passenger Flight Activity													
Allegiant Air	Allegiant	Non-Terminal	Non-Terminal	Non-Signatory	Charter	-	158	-	-	-	-	1	145,505
Breeze Airways	Breeze	Non-Terminal	Non-Terminal	Non-Signatory	Charter	-	-	-	-	-	-	6	582,018
Delta Air Lines	Delta	Non-Terminal	Non-Terminal	Signatory	Charter	-	49	-	-	-	-	7	1,386,000
Freight Runners Express	Freight Runners Express	Non-Terminal	Non-Terminal	Non-Signatory	Charter	29	30	-	-	-	-	2	97,000
Global Crossing Airlines	Global Crossing Airlines	Non-Terminal	Non-Terminal	Non-Signatory	Charter	-	-	-	-	-	-	2	291,010
Kaiser Air	Kaiser Air	Non-Terminal	Non-Terminal	Non-Signatory	Charter	-	-	-	-	-	-	1	129,200
Kalitta	Kalitta	Non-Terminal	Non-Terminal	Non-Signatory	Charter	2	3	-	-	-	-	3	57,600
National Airlines	National Airlines	Non-Terminal	Non-Terminal	Non-Signatory	Charter	-	168	-	-	-	-	1	198,000
Royal Air Freight	Royal Air Freight	Non-Terminal	Non-Terminal	Non-Signatory	Charter	-	4	-	-	-	-	1	15,300
Sun Country	Sun Country	Non-Terminal	Non-Terminal	Non-Signatory	Charter	102	94	-	-	-	-	3	438,900
Swift Air	Swift Air	Non-Terminal	Non-Terminal	Non-Signatory	Charter	-	-	-	-	-	-	31	3,776,300
United Airlines	United	Non-Terminal	Non-Terminal	Signatory	Charter	-	-	-	-	-	-	1	554,000
Non-Terminal - Diversion / Ferry Flight Activity													
American - Envoy Air	American	Non-Terminal	Non-Terminal	Signatory	Diversion / Ferry	-	-	-	-	-	-	2	149,900
American - PSA	American	Non-Terminal	Non-Terminal	Signatory	Diversion / Ferry	-	-	-	-	-	-	2	142,100
American - Republic	American	Non-Terminal	Non-Terminal	Signatory	Diversion / Ferry	-	-	-	-	-	-	13	969,070
Delta Air Lines	Delta	Non-Terminal	Non-Terminal	Signatory	Diversion / Ferry	-	-	-	-	-	-	1	157,300
Delta Connection - Republic	Delta	Non-Terminal	Non-Terminal	Signatory	Diversion / Ferry	-	-	-	-	-	-	7	519,407
Delta Connection - Skywest	Delta	Non-Terminal	Non-Terminal	Signatory	Diversion / Ferry	-	-	-	-	-	-	1	75,177
Southwest Airlines	Southwest	Non-Terminal	Non-Terminal	Signatory	Diversion / Ferry	-	-	-	-	-	-	2	292,600
United Express - Air Wisconsin	United	Non-Terminal	Non-Terminal	Signatory	Diversion / Ferry	-	-	-	-	-	-	2	94,000
United Express - Republic	United	Non-Terminal	Non-Terminal	Signatory	Diversion / Ferry	-	-	-	-	-	-	1	74,957
United Express - Skywest	United	Non-Terminal	Non-Terminal	Signatory	Diversion / Ferry	-	-	-	-	-	-	1	74,957
Non-Terminal - Freight Flight Activity													
Aeronaes	Aeronaes	Non-Terminal	Non-Terminal	Non-Signatory	Freight	-	-	-	-	-	-	1	47,000
Alpine Air Express	Alpine Air Express	Non-Terminal	Non-Terminal	Non-Signatory	Freight	300	-	-	-	-	-	1	16,765
Air Cargo Carriers	Air Cargo Carriers	Non-Terminal	Non-Terminal	Non-Signatory	Freight	-	-	-	-	-	-	1	26,499
Berry Aviation	Berry Aviation	Non-Terminal	Non-Terminal	Non-Signatory	Freight	-	-	-	-	-	-	1	24,800
IFL Group	IFL Group	Non-Terminal	Non-Terminal	Non-Signatory	Freight	690	-	-	-	-	-	1	27,734
McNeely Charter Service	McNeely Charter Service	Non-Terminal	Non-Terminal	Non-Signatory	Freight	-	-	-	-	-	-	2	31,000
Priority Air Charter	Priority Air Charter	Non-Terminal	Non-Terminal	Non-Signatory	Freight	-	-	-	-	-	-	-	-
Royal Air Freight	Royal Air Freight	Non-Terminal	Non-Terminal	Non-Signatory	Freight	180	-	-	-	1,309	-	6	91,800
Sierra West/Pak West	Sierra West/Pak West	Non-Terminal	Non-Terminal	Non-Signatory	Freight	-	-	-	-	-	-	2	31,000
SUBTOTAL: Terminal Passenger Flight Activity						262,877	268,641	32,162	38,117	268,426	216,757	3,269	355,677,537
SUBTOTAL: Non-Terminal Flight Activity						133	506	-	-	1,170	1,309	106	10,516,899
MONTHLY GRAND TOTAL: Terminal & Non-Terminal Activity						263,010	269,147	32,162	38,117	269,596	218,066	3,375	366,194,436
						532,157		70,279		487,662			