

Monthly Statistics Report

Report compiled from self-reported airline statistics

December 2022



COLUMBUS
REGIONAL AIRPORT AUTHORITY

JOHN GLENN COLUMBUS INTERNATIONAL AIRPORT

December 2022

1/19/2023

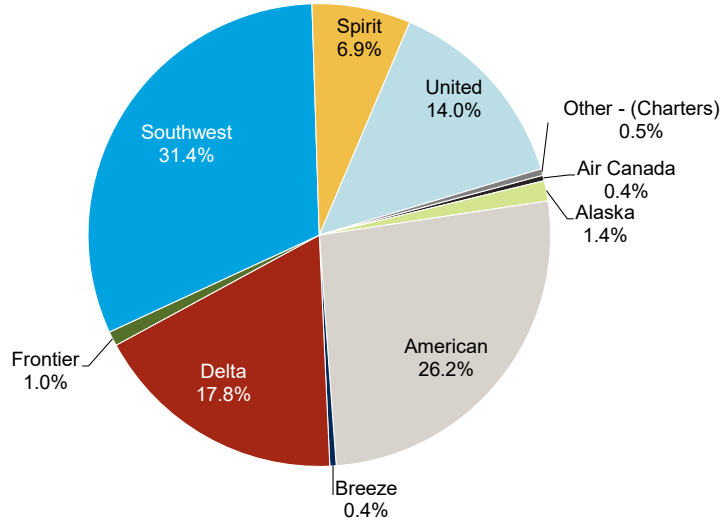
PASSENGERS	Total Passengers - Monthly							Total Passengers - Year to Date								
	Totals		Compared to 2021 (YOY)			Compared to 2019			Totals		Compared to 2021 (YOY)			Compared to 2019		
	Dec 2022	Dec 2021	Actual Change	Percent Change	Dec 2019	Actual Change	Percent Change	YTD 2022	YTD 2021	Actual Change	Percent Change	YTD 2019	Actual Change	Percent Change		
Airline																
Air Canada Express	2,281	1,729	552	31.9%	4,939	-2,658	-53.8%	40,947	11,525	29,422	255.3%	73,230	-32,283	-44.1%		
Alaska	8,345	7,083	1,262	17.8%	7,000	1,345	19.2%	100,822	79,847	20,975	26.3%	74,366	26,456	35.6%		
American	153,340	146,297	7,043	4.8%	172,019	-18,679	-10.9%	1,806,529	1,397,503	409,026	29.3%	2,053,530	-247,001	-12.0%		
Breeze	2,490	6,259	-3,769	-60.2%		2,490	-	58,686	28,972	29,714	102.6%		58,686	-		
Delta	104,336	106,690	-2,354	-2.2%	155,247	-50,911	-32.8%	1,334,935	1,086,864	248,071	22.8%	1,851,913	-516,978	-27.9%		
Frontier	5,927	9,074	-3,147	-34.7%	8,365	-2,438	-29.1%	98,316	75,347	22,969	30.5%	113,259	-14,943	-13.2%		
Southwest	183,730	186,631	-2,901	-1.6%	252,179	-68,449	-27.1%	2,520,265	1,936,712	583,553	30.1%	2,851,702	-331,437	-11.6%		
Spirit	40,478	51,548	-11,070	-21.5%	41,265	-787	-1.9%	510,835	526,544	-15,709	-3.0%	450,710	60,125	13.3%		
United	81,741	70,864	10,877	15.3%	90,155	-8,414	-9.3%	951,913	652,455	299,458	45.9%	1,127,247	-175,334	-15.6%		
AIRLINES TOTALS	582,668	586,175	-3,507	-0.6%	731,169	-148,501	-20.3%	7,423,248	5,795,769	1,627,479	28.1%	8,595,957	-1,172,709	-13.6%		
CHARTER TOTALS	2,690	1,561	1,129	72.3%	2,541	149	5.9%	31,783	26,553	5,230	19.7%	41,151	-9,368	-22.8%		
AIRPORT TOTALS	585,358	587,736	-2,378	-0.4%	733,710	-148,352	-20.2%	7,455,031	5,822,322	1,632,709	28.0%	8,637,108	-1,182,077	-13.7%		
CARGO	Total Cargo (Freight and Mail) - Monthly							Total Cargo (Freight and Mail) - Year-To-Date								
Totals		Compared to 2021 (YOY)			Compared to 2019			Totals		Compared to 2021 (YOY)			Compared to 2019			
Dec 2022	Dec 2021	Actual Change	Percent Change	Dec 2019	Actual Change	Percent Change	YTD 2022	YTD 2021	Actual Change	Percent Change	YTD 2019	Actual Change	Percent Change			
Airline																
Alaska	29,104	44,231	-15,127	-34.2%	19,104	10,000	52.3%	414,304	376,877	37,427	9.9%	250,511	163,793	65.4%		
American	45,770	101,216	-55,446	-54.8%	208,625	-162,855	-78.1%	726,158	1,141,745	-415,587	-36.4%	1,843,354	-1,117,196	-60.6%		
Delta	81,085	90,768	-9,683	-10.7%	155,676	-74,591	-47.9%	1,009,040	1,020,115	-11,075	-1.1%	2,001,452	-992,412	-49.6%		
Southwest	390,085	423,083	-32,998	-7.8%	315,519	74,566	23.6%	5,967,625	5,733,316	234,309	4.1%	4,700,376	1,267,249	27.0%		
United	68,623	67,254	1,369	2.0%	63,295	5,328	8.4%	557,418	352,527	204,891	58.1%	1,159,975	-602,557	-51.9%		
AIRLINES TOTALS	614,667	726,552	-111,885	-15.4%	762,219	-147,552	-19.4%	8,674,545	8,624,580	49,965	0.6%	9,955,668	-1,281,123	-12.9%		
CARGO AIRLINES TOTALS	84,624	21,049	63,575	302.0%	16,800	67,824	403.7%	511,065	225,779	285,286	126.4%	127,082	383,983	302.2%		
AIRPORT TOTALS	699,291	747,601	-48,310	-6.5%	779,019	-79,728	-10.2%	9,185,610	8,850,359	335,251	3.8%	10,082,750	-897,140	-8.9%		
AIRCRAFT OPERATIONS	Actual Landing Operations - Monthly							Actual Landing Operations - Year to Date								
Totals		Compared to 2021 (YOY)			Compared to 2019			Totals		Compared to 2021 (YOY)			Compared to 2019			
Dec 2022	Dec 2021	Actual Change	Percent Change	Dec 2019	Actual Change	Percent Change	YTD 2022	YTD 2021	Actual Change	Percent Change	YTD 2019	Actual Change	Percent Change			
Airline																
Air Canada Express	28	31	-3	-9.7%	91	-63	-69.2%	575	182	393	215.9%	1,234	-659	-53.4%		
Alaska	28	24	4	16.7%	31	-3	-9.7%	323	295	28	9.5%	302	21	7.0%		
American	961	1,060	-99	-9.3%	1,300	-339	-26.1%	11,649	9,476	2,173	22.9%	15,625	-3,976	-25.4%		
Breeze	13	50	-37	-74.0%	-	13	-	410	264	146	55.3%	-	410	-		
Delta	564	705	-141	-20.0%	910	-346	-38.0%	8,127	6,875	1,252	18.2%	10,973	-2,846	-25.9%		
Frontier	20	32	-12	-37.5%	26	-6	-23.1%	336	253	83	32.8%	364	-28	-7.7%		
Southwest	776	771	5	0.6%	1,141	-365	-32.0%	9,999	7,931	2,068	26.1%	12,401	-2,402	-19.4%		
Spirit	149	192	-43	-22.4%	137	12	8.8%	1,826	1,917	-91	-4.7%	1,577	249	15.8%		
United	527	578	-51	-8.8%	708	-181	-25.6%	6,142	5,397	745	13.8%	8,322	-2,180	-26.2%		
AIRLINES TOTALS	3,066	3,443	-377	-10.9%	4,344	-1,278	-29.4%	39,387	32,590	6,797	20.9%	50,798	-11,411	-22.5%		
CHARTER TOTALS	80	57	23	40.4%	68	12	17.6%	953	729	224	30.7%	939	14	1.5%		
CARGO AIRLINES TOTALS	56	30	26	86.7%	1	55	5500.0%	265	212	53	25.0%	58	207	356.9%		
AIRPORT TOTALS	3,202	3,530	-328	-9.3%	4,413	-1,211	-27.4%	40,605	33,531	7,074	21.1%	51,795	-11,190	-21.6%		

Notes:
 Due to the COVID-19 pandemic that has impacted traffic since 1Q2020, 2019 data is noted here for baseline comparisons
 Air Canada Express service reinstated July 1, 2021
 Breeze Airways service began July 3, 2021

JOHN GLENN COLUMBUS INTERNATIONAL AIRPORT

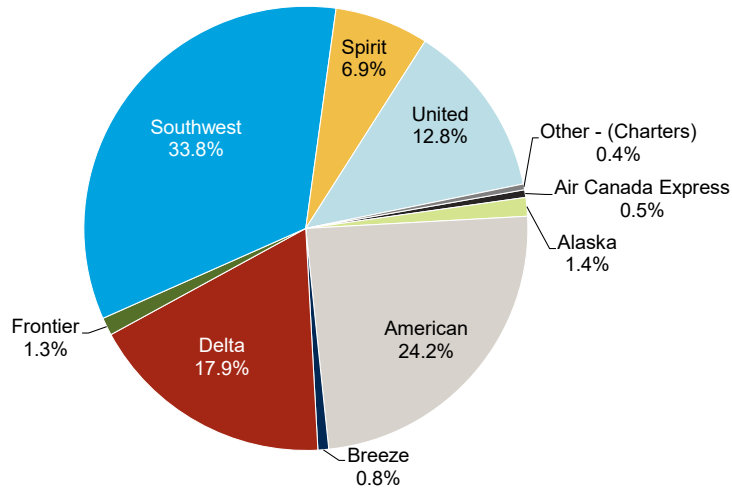
December 2022

Monthly by Passengers



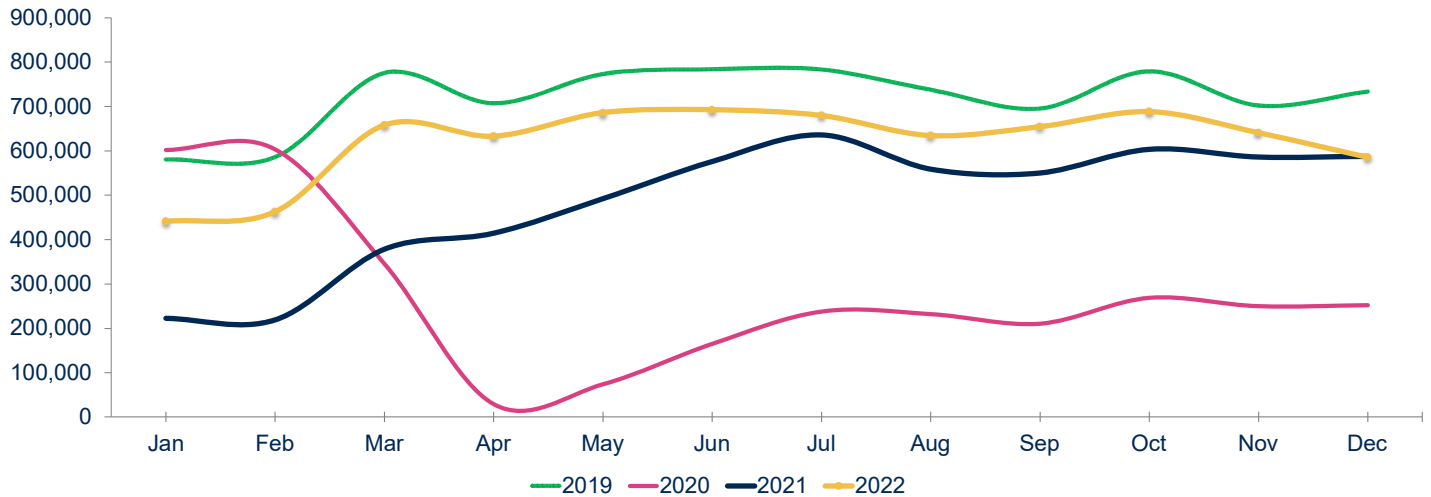
Notes:
Figures may not add up to 100% due to rounding

Year to Date by Passengers



Notes:
Figures may not add up to 100% due to rounding

Total Passengers



Year	Jan	Feb	Mar	Apr	May	Jun	Jul	Aug	Sep	Oct	Nov	Dec	Total	Growth
2019	580,704	586,025	775,533	707,185	772,991	783,831	783,122	737,440	695,409	779,088	702,070	733,710	8,637,108	6.1%
2020	602,022	603,467	345,418	28,943	73,769	164,700	237,756	232,096	210,233	268,914	249,522	252,287	3,269,127	-62.2%
2021	222,576	218,588	378,159	413,942	492,089	575,626	635,429	558,762	550,019	603,585	585,811	587,736	5,822,322	78.1%
2022	440,753	462,587	658,147	633,049	685,860	692,343	679,423	634,576	654,190	688,029	640,716	585,358	7,455,031	28.0%
22 vs. 21	98.0%	111.6%	74.0%	52.9%	39.4%	20.3%	6.9%	13.6%	18.9%	14.0%	9.4%	-0.4%	YE Peak Month	
22 vs. 19	-24.1%	-21.1%	-15.1%	-10.5%	-11.3%	-11.7%	-13.2%	-13.9%	-5.9%	-11.7%	-8.7%	-20.2%	YE Lowest Month	

RICKENBACKER INTERNATIONAL AIRPORT

December 2022

1/19/2023

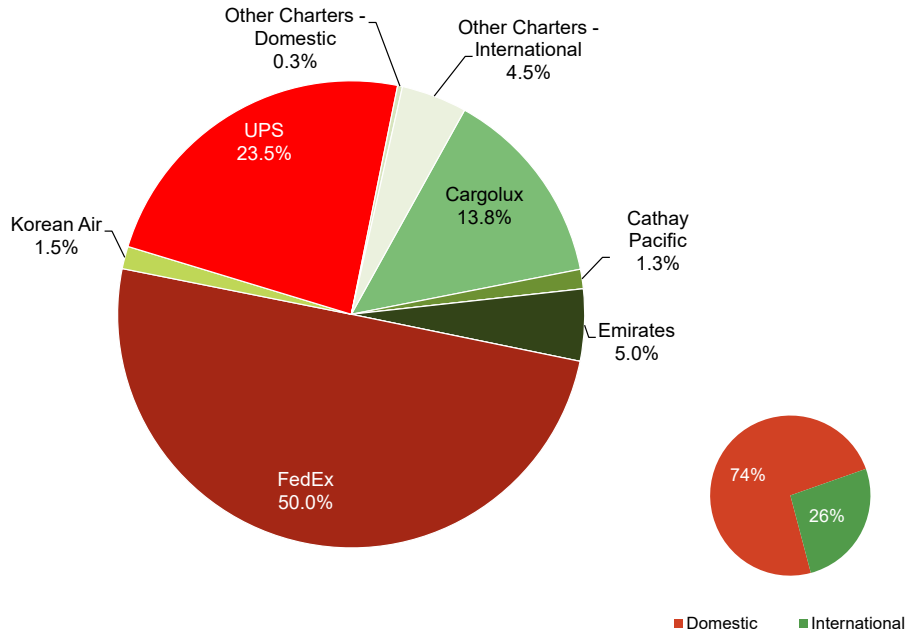
PASSENGERS	Total Passengers - Monthly							Total Passengers - Year to Date								
	Totals		Compared to 2021 (YOY)			Compared to 2019			Totals		Compared to 2021 (YOY)			Compared to 2019		
	Dec 2022	Dec 2021	Actual Change	Percent Change	Dec 2019	Actual Change	Percent Change	YTD 2022	YTD 2021	Actual Change	Percent Change	YTD 2019	Actual Change	Percent Change		
Airline																
Allegiant Air	19,335	19,829	-494	-2.5%	20,649	-1,314	-6.4%	292,162	293,998	-1,836	-0.6%	301,915	-9,753	-3.2%		
Miami Air	-	-	-	-	659	-659	-100.0%	-	-	-	-	1,434	-1,434	-100.0%		
Sun Country	-	-	-	-	-	-	-	640	122	518	424.6%	471	169	35.9%		
Other Charters	1	-	1	-	1,540	-1,539	-99.9%	198	1,464	-1,266	-86.5%	4,960	-4,762	-96.0%		
AIRPORT TOTALS	19,336	19,829	-493	-2.5%	22,848	-3,512	-15.4%	293,000	295,584	-2,584	-0.9%	308,780	-15,780	-5.1%		
CARGO	Total Cargo (Freight and Mail) - Monthly							Total Cargo (Freight and Mail) - Year-To-Date								
	Totals		Compared to 2021 (YOY)			Compared to 2019			Totals		Compared to 2021 (YOY)			Compared to 2019		
	Dec 2022	Dec 2021	Actual Change	Percent Change	Dec 2019	Actual Change	Percent Change	YTD 2022	YTD 2021	Actual Change	Percent Change	YTD 2019	Actual Change	Percent Change		
Airline																
AirBridgeCargo	-	-	-	-	2,342,969	-2,342,969	-100.0%	-	-	-	-	19,918,103	-19,918,103	-100.0%		
Asiana	-	-	-	-	534,358	-534,358	-100.0%	-	-	-	-	4,375,605	-4,375,605	-100.0%		
Cargolux	1,985,534	3,554,899	-1,569,365	-44.1%	3,322,902	-1,337,368	-40.2%	40,057,453	51,851,402	-11,793,949	-22.7%	41,240,629	-1,183,176	-2.9%		
Cathay Pacific	193,656	2,691,561	-2,497,905	-92.8%	2,273,449	-2,079,793	-91.5%	8,020,323	19,410,703	-11,390,380	-58.7%	25,060,890	-17,040,567	-68.0%		
China Airlines	-	-	-	-	1,294,435	-1,294,435	-100.0%	-	-	-	-	16,354,465	-16,354,465	-100.0%		
Emirates	713,479	3,215,752	-2,502,273	-77.8%	2,250,095	-1,536,616	-68.3%	16,673,021	46,688,232	-30,015,211	-64.3%	32,090,034	-15,417,013	-48.0%		
Etihad	-	-	-	-	1,292,960	-1,292,960	-100.0%	-	662,381	-662,381	-100.0%	16,892,260	-16,892,260	-100.0%		
FedEx	7,169,820	7,500,024	-330,204	-4.4%	7,088,996	80,824	1.1%	73,817,557	82,000,489	-8,182,932	-10.0%	83,727,457	-9,909,900	-11.8%		
Korean Air	222,195	4,717,419	-4,495,224	-95.3%	-	222,195	-	21,330,426	47,530,253	-26,199,827	-55.1%	-	21,330,426	-		
UPS	3,371,647	3,697,226	-325,579	-8.8%	3,678,541	-306,894	-8.3%	26,852,810	28,443,069	-1,590,259	-5.6%	28,605,329	-1,752,519	-6.1%		
Other Cargo Charters - Domestic	45,466	18,367	27,099	147.5%	613,418	-567,952	-92.6%	585,498	277,333	308,165	111.1%	4,997,562	-4,412,064	-88.3%		
Other Cargo Charters - International	651,882	2,879,327	-2,227,445	-77.4%	301,258	350,624	116.4%	38,116,695	61,823,032	-23,706,337	-38.3%	13,461,623	24,655,072	183.2%		
AIRPORT TOTALS	14,353,679	28,274,575	-13,920,896	-49.2%	24,993,381	-10,639,702	-42.6%	225,453,783	338,686,894	-113,233,111	-33.4%	286,723,956	-61,270,173	-21.4%		
TOTAL DOMESTIC	10,586,933	11,215,617	-628,684	-5.6%	11,380,955	-794,022	-7.0%	101,255,865	110,720,891	-9,465,026	-8.5%	117,330,348	-16,074,483	-13.7%		
TOTAL INTERNATIONAL	3,766,746	17,058,958	-13,292,212	-77.9%	13,612,426	-9,845,680	-72.3%	124,197,918	227,966,003	-103,768,085	-45.5%	169,393,608	-45,195,690	-26.7%		
AIRPORT TOTALS	14,353,679	28,274,575	-13,920,896	-49.2%	24,993,381	-10,639,702	-42.6%	225,453,783	338,686,894	-113,233,111	-33.4%	286,723,956	-61,270,173	-21.4%		
AIRCRAFT OPERATIONS	Actual Landing Operations - Monthly							Actual Landing Operations - Year to Date								
	Totals		Compared to 2021 (YOY)			Compared to 2019			Totals		Compared to 2021 (YOY)			Compared to 2019		
	Dec 2022	Dec 2021	Actual Change	Percent Change	Dec 2019	Actual Change	Percent Change	YTD 2022	YTD 2021	Actual Change	Percent Change	YTD 2019	Actual Change	Percent Change		
Airline																
Allegiant Air	63	73	-10	-13.7%	70	-7	-10.0%	975	1,138	-163	-14.3%	1,034	-59	-5.7%		
Miami Air	-	-	-	-	4	-4	-100.0%	-	-	-	-	10	-10	-100.0%		
Sun Country	-	-	-	-	-	-	-	3	2	1	50.0%	2	1	50.0%		
Other Charters	1	-	1	-	9	-8	-88.9%	2	12	-10	-83.3%	45	-43	-95.6%		
PASSENGER OPERATIONS TOTALS	64	73	-9	-12.3%	83	-19	-22.9%	980	1,152	-172	-14.9%	1,091	-111	-10.2%		
AirBridgeCargo	-	-	-	-	7	-7	-100.0%	-	-	-	-	85	-85	-100.0%		
Asiana	-	-	-	-	2	-2	-100.0%	-	-	-	-	17	-17	-100.0%		
Cargolux	11	13	-2	-15.4%	17	-6	-35.3%	161	184	-23	-12.5%	203	-42	-20.7%		
Cathay Pacific	4	21	-17	-81.0%	15	-11	-73.3%	72	135	-63	-46.7%	195	-123	-63.1%		
China Airlines	-	-	-	-	9	-9	-100.0%	-	1	-1	-100.0%	106	-106	-100.0%		
Emirates	5	37	-32	-86.5%	13	-8	-61.5%	146	422	-276	-65.4%	194	-48	-24.7%		
Etihad	-	-	-	-	7	-7	-100.0%	-	5	-5	-100.0%	83	-83	-100.0%		
FedEx	151	174	-23	-13.2%	151	-	0.0%	1,586	1,642	-56	-3.4%	1,660	-74	-4.5%		
Korean Air	4	51	-47	-92.2%	-	4	-	265	528	-263	-49.8%	-	265	-		
UPS	63	72	-9	-12.5%	51	12	23.5%	357	365	-8	-2.2%	519	-162	-31.2%		
Other Cargo Charters - Domestic	121	64	57	89.1%	70	51	72.9%	1,035	811	224	27.6%	725	310	42.8%		
Other Cargo Charters - International	12	25	-13	-52.0%	2	10	500.0%	316	380	-64	-16.8%	76	240	315.8%		
CARGO OPERATIONS TOTALS	371	457	-86	-18.8%	344	27	7.8%	3,938	4,473	-535	-12.0%	3,863	75	1.9%		
AIRPORT TOTALS	435	530	-95	-17.9%	427	8	1.9%	4,918	5,625	-707	-12.6%	4,954	-36	-0.7%		

Notes: Due to the COVID-19 pandemic that has impacted traffic since 1Q2020, 2019 data is noted here for baseline comparisons

RICKENBACKER INTERNATIONAL AIRPORT

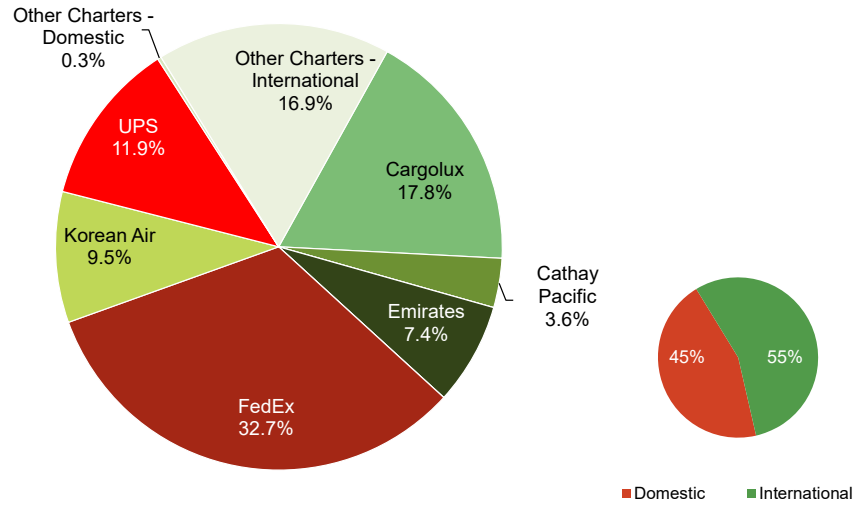
December 2022

Monthly Cargo by Weights



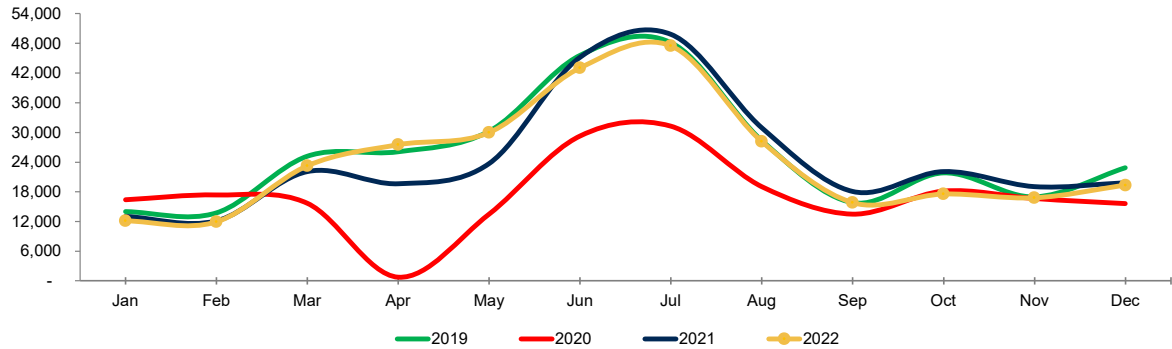
Note: Figures may not add up to 100% due to rounding

Year to Date Cargo by Weights



Note: Figures may not add up to 100% due to rounding

Total Passengers



Year	Jan	Feb	Mar	Apr	May	Jun	Jul	Aug	Sep	Oct	Nov	Dec	Total	Growth
2019	13,969	13,763	25,190	26,115	30,201	45,570	48,160	28,369	15,796	21,818	16,981	22,848	308,780	0.5%
2020	16,408	17,366	15,678	739	13,491	29,284	31,242	19,071	13,498	18,123	16,623	15,637	207,160	-32.9%
2021	13,016	12,126	22,110	19,655	23,696	45,199	49,810	30,952	18,048	22,114	19,029	19,829	295,584	42.7%
2022	12,115	11,934	23,272	27,520	29,943	43,038	47,481	28,193	15,821	17,543	16,804	19,336	293,000	-0.9%
22 vs. 21	-6.9%	-1.6%	5.3%	40.0%	26.4%	-4.8%	-4.7%	-8.9%	-12.3%	-20.7%	-11.7%	-2.5%	YE Peak Month	
22 vs. 19	-13.3%	-13.3%	-7.6%	5.4%	-0.9%	-5.6%	-1.4%	-0.6%	0.2%	-19.6%	-1.0%	-15.4%	YE Lowest Month	

COMBINED AIRPORTS TRAFFIC REPORT

December 2022

1/19/2023

PASSENGERS	Total Passengers - Monthly							Total Passengers - Year to Date						
	Compared to 2021 (YOY)				Compared to 2019			Compared to 2021 (YOY)				Compared to 2019		
	Dec 2022	Dec 2021	Actual Change	Percent Change	Dec 2019	Actual Change	Percent Change	YTD 2022	YTD 2021	Actual Change	Percent Change	YTD 2019	Actual Change	Percent Change
Airports														
John Glenn International	585,358	587,736	-2,378	-0.4%	733,710	-148,352	-20.2%	7,455,031	5,822,322	1,632,709	28.0%	8,637,108	-1,182,077	-13.7%
Rickenbacker International	19,336	19,829	-493	-2.5%	22,848	-3,512	-15.4%	293,000	295,584	-2,584	-0.9%	308,780	-15,780	-5.1%
AIRPORT TOTALS	604,694	607,565	-2,871	-0.5%	756,558	-151,864	-20.1%	7,748,031	6,117,906	1,630,125	26.6%	8,945,888	-1,197,857	-13.4%
CARGO	Total Cargo (Freight and Mail) - Monthly							Total Cargo (Freight and Mail) - Year-To-Date						
	Compared to 2021 (YOY)				Compared to 2019			Compared to 2021 (YOY)				Compared to 2019		
	Dec 2022	Dec 2021	Actual Change	Percent Change	Dec 2019	Actual Change	Percent Change	YTD 2022	YTD 2021	Actual Change	Percent Change	YTD 2019	Actual Change	Percent Change
Airports														
John Glenn International	699,291	747,601	-48,310	-6.5%	779,019	-79,728	-10.2%	9,185,610	8,850,359	335,251	3.8%	10,082,750	-897,140	-8.9%
Rickenbacker International	14,353,679	28,274,575	-13,920,896	-49.2%	24,993,381	-10,639,702	-42.6%	225,453,783	338,686,894	-113,233,111	-33.4%	286,723,956	-61,270,173	-21.4%
AIRPORT TOTALS	15,052,970	29,022,176	-13,969,206	-48.1%	25,772,400	-10,719,430	-41.6%	234,639,393	347,537,253	-112,897,860	-32.5%	296,806,706	-62,167,313	-20.9%
AIRCRAFT OPERATIONS	Actual Landing Operations - Monthly							Actual Landing Operations - Year to Date						
	Compared to 2021 (YOY)				Compared to 2019			Compared to 2021 (YOY)				Compared to 2019		
	Dec 2022	Dec 2021	Actual Change	Percent Change	Dec 2019	Actual Change	Percent Change	YTD 2022	YTD 2021	Actual Change	Percent Change	YTD 2019	Actual Change	Percent Change
Airports														
John Glenn International	3,202	3,530	-328	-9.3%	4,413	-1,211	-27.4%	40,605	33,531	7,074	21.1%	51,795	-11,190	-21.6%
Rickenbacker International	435	530	-95	-17.9%	427	8	1.9%	4,918	5,625	-707	-12.6%	4,954	-36	-0.7%
AIRPORT TOTALS	3,637	4,060	-423	-10.4%	4,840	-1,203	-24.9%	45,523	39,156	6,367	16.3%	56,749	-11,226	-19.8%

Notes: Due to the COVID-19 pandemic that has impacted traffic since 10/2020, 2019 data is noted here for baseline comparisons.

COLUMBUS REGIONAL AIRPORT AUTHORITY - JOHN GLENN COLUMBUS INTERNATIONAL AIRPORT
MONTHLY TRAFFIC REPORT
December 2022

1/19/2023

Operating Airline	Brand Airline	Terminal / Non-Terminal	Concourse	Sig / Non-Sig	Scheduled / Charter / Freight	Pax - Enplane	Pax - Deplane	Mail - Enplane	Mail - Deplane	Freight - Enplane	Freight - Deplane	Landings	Landed Weight
TERMINAL PASSENGER FLIGHT ACTIVITY: Scheduled and charter flights operating from the CMH terminal													
Terminal - Scheduled Passenger Flight Activity													
Air Canada Express - Jazz	Air Canada	Terminal	Concourse B	Signatory	Scheduled	1,227	1,054	-	-	-	-	28	1,316,000
Alaska Airlines	Alaska	Terminal	Concourse C	Signatory	Scheduled	4,210	4,135	-	-	14,873	14,231	28	4,395,500
American Airlines	American	Terminal	Concourse B	Signatory	Scheduled	41,918	41,645	2,266	22,055	6,426	8,705	326	47,709,372
American - Envoy Air	American	Terminal	Concourse B	Signatory	Scheduled	13,119	12,125	-	-	755	1,619	199	14,915,050
American - PSA	American	Terminal	Concourse B	Signatory	Scheduled	7,156	6,470	-	-	131	581	109	7,967,200
American - Republic	American	Terminal	Concourse B	Signatory	Scheduled	15,356	15,551	-	-	239	2,993	327	24,405,690
Breeze Airways	Breeze	Terminal	Concourse C	Signatory	Scheduled	1,290	1,200	-	-	-	-	13	1,411,394
Delta Air Lines	Delta	Terminal	Concourse C	Signatory	Scheduled	27,983	27,071	28,660	4	19,667	32,754	191	27,744,292
Delta Connection - Endeavor	Delta	Terminal	Concourse C	Signatory	Scheduled	3,773	3,608	-	-	-	-	70	5,220,800
Delta Connection - Republic	Delta	Terminal	Concourse C	Signatory	Scheduled	11,993	11,682	-	-	-	-	161	12,065,431
Delta Connection - Skywest	Delta	Terminal	Concourse C	Signatory	Scheduled	9,476	8,750	-	-	-	-	142	10,564,290
Frontier Airlines	Frontier	Terminal	Concourse C	Signatory	Scheduled	2,814	3,113	-	-	-	-	20	3,008,215
Southwest Airlines	Southwest	Terminal	Concourse A	Signatory	Scheduled	94,438	89,292	-	-	261,273	128,812	776	106,623,700
Spirit Airlines	Spirit	Terminal	Concourse B	Signatory	Scheduled	21,109	19,369	-	-	-	-	149	21,465,346
United Airlines	United	Terminal	Concourse B	Signatory	Scheduled	29,096	26,021	16,774	13,549	27,012	11,288	235	33,583,000
United Express - Air Wisconsin	United	Terminal	Concourse B	Signatory	Scheduled	1,950	1,887	-	-	-	-	42	1,974,000
United Express - CommutAir	United	Terminal	Concourse B	Signatory	Scheduled	1,347	1,219	-	-	-	-	29	1,276,000
United Express - GoJet	United	Terminal	Concourse B	Signatory	Scheduled	676	753	-	-	-	-	16	976,000
United Express - Mesa	United	Terminal	Concourse B	Signatory	Scheduled	2,994	3,038	-	-	-	-	45	3,375,000
United Express - Republic	United	Terminal	Concourse B	Signatory	Scheduled	6,481	6,032	-	-	-	-	158	11,576,061
United Express - Skywest	United	Terminal	Concourse B	Signatory	Scheduled	119	128	-	-	-	-	2	149,914
Terminal - Charter Passenger Flight Activity													
American Airlines	American	Terminal	Concourse B	Signatory	Charter	-	-	-	-	-	-	1	138,300
National Airlines	National Airlines	Terminal	Concourse C	Non-Signatory	Charter	410	-	-	-	-	-	2	599,241
Sun Country	Sun Country	Terminal	Concourse C	Non-Signatory	Charter	340	340	-	-	-	-	4	585,200
NON-TERMINAL FLIGHT ACTIVITY: Flights operating at a location other than the CMH terminal													
Non-Terminal - Charter Passenger Flight Activity													
Air Canada - Jetz	Air Canada	Non-Terminal	Non-Terminal	Signatory	Charter	97	-	-	-	-	-	5	727,525
Allegiant Air	Allegiant	Non-Terminal	Non-Terminal	Non-Signatory	Charter	-	-	-	-	-	-	1	145,505
Delta Air Lines	Delta	Non-Terminal	Non-Terminal	Signatory	Charter	97	89	-	-	-	-	2	344,300
Global Crossing Airlines	Global Crossing Airlines	Non-Terminal	Non-Terminal	Non-Signatory	Charter	-	-	-	-	-	-	2	291,010
Hillwood Airways	Hillwood Airways	Non-Terminal	Non-Terminal	Non-Signatory	Charter	34	44	-	-	-	-	2	258,400
IBC Airways	IBC Airways	Non-Terminal	Non-Terminal	Non-Signatory	Charter	-	25	-	-	-	-	1	48,501
Kalitta	Kalitta	Non-Terminal	Non-Terminal	Non-Signatory	Charter	3	3	-	-	-	-	3	49,800
National Airlines	National Airlines	Non-Terminal	Non-Terminal	Non-Signatory	Charter	-	203	-	-	-	-	1	401,241
RVR Aviation	RVR Aviation	Non-Terminal	Non-Terminal	Non-Signatory	Charter	-	-	-	-	-	-	4	170,196
Swift Air	Swift Air	Non-Terminal	Non-Terminal	Non-Signatory	Charter	495	510	-	-	-	-	21	2,658,300
Non-Terminal - Diversion / Ferry Flight Activity													
American - Republic	American	Non-Terminal	Non-Terminal	Signatory	Diversion / Ferry	-	-	-	-	-	-	9	669,270
Breeze Airways	Breeze	Non-Terminal	Non-Terminal	Signatory	Diversion / Ferry	-	-	-	-	-	-	2	194,006
Delta Air Lines	Delta	Non-Terminal	Non-Terminal	Signatory	Diversion / Ferry	-	-	-	-	-	-	1	146,300
Delta Connection - Endeavor	Delta	Non-Terminal	Non-Terminal	Signatory	Diversion / Ferry	-	-	-	-	-	-	1	75,100
Delta Connection - Republic	Delta	Non-Terminal	Non-Terminal	Signatory	Diversion / Ferry	-	-	-	-	-	-	12	891,546
Delta Connection - Skywest	Delta	Non-Terminal	Non-Terminal	Signatory	Diversion / Ferry	-	-	-	-	-	-	2	150,277
Southwest Airlines	Southwest	Non-Terminal	Non-Terminal	Signatory	Diversion / Ferry	-	-	-	-	-	-	4	556,200
Non-Terminal - Freight Flight Activity													
Aeronaues	Aeronaues	Non-Terminal	Non-Terminal	Non-Signatory	Freight	-	-	-	-	-	-	2	97,200
Alpine Air Express	Alpine Air Express	Non-Terminal	Non-Terminal	Non-Signatory	Freight	-	-	1,800	-	-	-	1	16,765
Air Cargo Carriers	Air Cargo Carriers	Non-Terminal	Non-Terminal	Non-Signatory	Freight	-	-	-	-	-	-	3	79,497
Air First Aviation	Air First Aviation	Non-Terminal	Non-Terminal	Non-Signatory	Freight	-	-	-	-	-	-	2	22,050
Amerflight	Amerflight	Non-Terminal	Non-Terminal	Non-Signatory	Freight	2,436	-	-	-	-	-	2	44,000
Ameristar Jet Charter	Ameristar Jet Charter	Non-Terminal	Non-Terminal	Non-Signatory	Freight	-	11,400	-	-	-	-	1	81,700
Berry Aviation	Berry Aviation	Non-Terminal	Non-Terminal	Non-Signatory	Freight	-	-	-	-	-	-	3	74,400
Castle Aviation	Castle Aviation	Non-Terminal	Non-Terminal	Non-Signatory	Freight	-	3,600	-	-	-	-	1	30,000
Encore Air Cargo	Encore Air Cargo	Non-Terminal	Non-Terminal	Non-Signatory	Freight	-	-	-	-	-	-	3	46,500
Freight Runners Express	Freight Runners Express	Non-Terminal	Non-Terminal	Non-Signatory	Freight	500	7,076	-	-	-	-	3	62,488
IFL Group	IFL Group	Non-Terminal	Non-Terminal	Non-Signatory	Freight	-	16,770	-	-	-	-	6	185,670
Kalitta	Kalitta	Non-Terminal	Non-Terminal	Non-Signatory	Freight	-	16,324	-	-	-	-	7	179,920
Legends Airways	Legends Airways	Non-Terminal	Non-Terminal	Non-Signatory	Freight	-	-	-	-	-	-	8	240,000
McNeely Charter Service	McNeely Charter Service	Non-Terminal	Non-Terminal	Non-Signatory	Freight	-	-	-	-	-	-	1	15,500
Priority Air Charter	Priority Air Charter	Non-Terminal	Non-Terminal	Non-Signatory	Freight	168	-	-	-	-	-	1	9,062
Royal Air Freight	Royal Air Freight	Non-Terminal	Non-Terminal	Non-Signatory	Freight	-	24,550	-	-	-	-	12	276,960
SUBTOTAL: Terminal Passenger Flight Activity						299,275	284,483	47,700	35,608	330,376	200,983	3,073	343,044,996
SUBTOTAL: Non-Terminal Flight Activity						726	874	-	-	3,104	81,520	129	9,239,189
MONTHLY GRAND TOTAL: Terminal & Non-Terminal Activity						300,001	285,357	47,700	35,608	333,480	282,503	3,202	352,284,185
						585,358		83,308		615,983			