

# *Monthly Statistics Report*

Report compiled from self-reported airline statistics

---

October 2022



**COLUMBUS**  
REGIONAL AIRPORT AUTHORITY

# JOHN GLENN COLUMBUS INTERNATIONAL AIRPORT

October 2022

12/6/2022

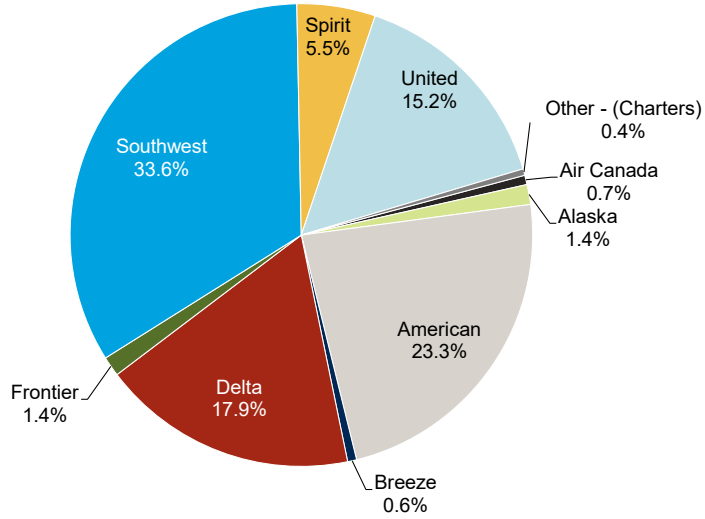
PASSENGERS	Total Passengers - Monthly							Total Passengers - Year to Date								
	Totals		Compared to 2021 (YOY)			Compared to 2019			Totals		Compared to 2021 (YOY)			Compared to 2019		
	Oct 2022	Oct 2021	Actual Change	Percent Change	Oct 2019	Actual Change	Percent Change	YTD 2022	YTD 2021	Actual Change	Percent Change	YTD 2019	Actual Change	Percent Change		
Airline																
Air Canada Express	4,538	2,031	2,507	123.4%	6,801	-2,263	-33.3%	36,435	8,178	28,257	345.5%	63,555	-27,120	-42.7%		
Alaska	9,610	5,690	3,920	68.9%	6,876	2,734	39.8%	83,812	67,425	16,387	24.3%	61,316	22,496	36.7%		
American	160,063	153,376	6,687	4.4%	184,004	-23,941	-13.0%	1,504,754	1,100,224	404,530	36.8%	1,715,893	-211,139	-12.3%		
Breeze	4,439	6,322	-1,883	-29.8%	-	4,439	-	51,376	16,763	34,613	206.5%	-	51,376	-		
Delta	123,110	118,622	4,488	3.8%	169,325	-46,215	-27.3%	1,112,805	864,230	248,575	28.8%	1,545,886	-433,081	-28.0%		
Frontier	9,627	6,959	2,668	38.3%	9,031	596	6.6%	86,013	60,864	25,149	41.3%	96,922	-10,909	-11.3%		
Southwest	231,094	190,163	40,931	21.5%	255,842	-24,748	-9.7%	2,113,227	1,563,211	550,016	35.2%	2,363,464	-250,237	-10.6%		
Spirit	37,804	38,111	-307	-0.8%	34,488	3,316	9.6%	432,097	436,438	-4,341	-1.0%	374,398	57,699	15.4%		
United	104,660	78,085	26,575	34.0%	108,730	-4,070	-3.7%	782,324	509,146	273,178	53.7%	944,521	-162,197	-17.2%		
AIRLINES TOTALS	684,945	599,359	85,586	14.3%	775,097	-90,152	-11.6%	6,202,843	4,626,479	1,576,364	34.1%	7,165,955	-963,112	-13.4%		
CHARTER TOTALS	3,084	4,226	-1,142	-27.0%	3,991	-907	-22.7%	26,114	22,296	3,818	17.1%	35,373	-9,259	-26.2%		
<b>AIRPORT TOTALS</b>	<b>688,029</b>	<b>603,585</b>	<b>84,444</b>	<b>14.0%</b>	<b>779,088</b>	<b>-91,059</b>	<b>-11.7%</b>	<b>6,228,957</b>	<b>4,648,775</b>	<b>1,580,182</b>	<b>34.0%</b>	<b>7,201,328</b>	<b>-972,371</b>	<b>-13.5%</b>		
CARGO	Total Cargo (Freight and Mail) - Monthly							Total Cargo (Freight and Mail) - Year-To-Date								
	Totals		Compared to 2021 (YOY)			Compared to 2019			Totals		Compared to 2021 (YOY)			Compared to 2019		
	Oct 2022	Oct 2021	Actual Change	Percent Change	Oct 2019	Actual Change	Percent Change	YTD 2022	YTD 2021	Actual Change	Percent Change	YTD 2019	Actual Change	Percent Change		
Airline																
Alaska	38,789	20,492	18,297	89.3%	17,690	21,099	119.3%	350,432	306,429	44,003	14.4%	207,653	142,779	68.8%		
American	36,694	60,155	-23,461	-39.0%	152,001	-115,307	-75.9%	637,993	973,111	-335,118	-34.4%	1,463,543	-825,550	-56.4%		
Delta	84,533	70,491	14,042	19.9%	168,375	-83,842	-49.8%	808,706	835,549	-26,843	-3.2%	1,691,184	-882,478	-52.2%		
Southwest	569,539	603,441	-33,902	-5.6%	496,112	73,427	14.8%	4,984,668	4,767,057	217,611	4.6%	4,018,196	966,472	24.1%		
United	61,708	82,963	-21,255	-25.6%	101,728	-40,020	-39.3%	437,291	238,637	198,654	83.2%	984,546	-547,255	-55.6%		
AIRLINES TOTALS	791,263	837,542	-46,279	-5.5%	935,906	-144,643	-15.5%	7,219,090	7,120,783	98,307	1.4%	8,365,122	-1,146,032	-13.7%		
CARGO AIRLINES TOTALS	94,934	85,695	9,239	10.8%	2,003	92,931	4639.6%	398,354	192,588	205,766	106.8%	44,126	354,228	802.8%		
<b>AIRPORT TOTALS</b>	<b>886,197</b>	<b>923,237</b>	<b>-37,040</b>	<b>-4.0%</b>	<b>937,909</b>	<b>-51,712</b>	<b>-5.5%</b>	<b>7,617,444</b>	<b>7,313,371</b>	<b>304,073</b>	<b>4.2%</b>	<b>8,409,248</b>	<b>-791,804</b>	<b>-9.4%</b>		
AIRCRAFT OPERATIONS	Actual Landing Operations - Monthly							Actual Landing Operations - Year to Date								
	Totals		Compared to 2021 (YOY)			Compared to 2019			Totals		Compared to 2021 (YOY)			Compared to 2019		
	Oct 2022	Oct 2021	Actual Change	Percent Change	Oct 2019	Actual Change	Percent Change	YTD 2022	YTD 2021	Actual Change	Percent Change	YTD 2019	Actual Change	Percent Change		
Airline																
Air Canada Express	60	31	29	93.5%	111	-51	-45.9%	519	122	397	325.4%	1,044	-525	-50.3%		
Alaska	31	20	11	55.0%	31	-	0.0%	266	252	14	5.6%	241	25	10.4%		
American	937	925	12	1.3%	1,381	-444	-32.2%	9,743	7,341	2,402	32.7%	13,026	-3,283	-25.2%		
Breeze	26	50	-24	-48.0%	-	26	-	368	167	201	120.4%	-	368	-		
Delta	719	662	57	8.6%	974	-255	-26.2%	6,865	5,440	1,425	26.2%	9,168	-2,303	-25.1%		
Frontier	31	24	7	29.2%	25	6	24.0%	294	200	94	47.0%	312	-18	-5.8%		
Southwest	907	759	148	19.5%	1,116	-209	-18.7%	8,323	6,400	1,923	30.0%	10,156	-1,833	-18.0%		
Spirit	139	141	-2	-1.4%	123	16	13.0%	1,537	1,581	-44	-2.8%	1,303	234	18.0%		
United	588	562	26	4.6%	787	-199	-25.3%	5,071	4,221	850	20.1%	6,919	-1,848	-26.7%		
AIRLINES TOTALS	3,438	3,174	264	8.3%	4,548	-1,110	-24.4%	32,986	25,724	7,262	28.2%	42,169	-9,183	-21.8%		
CHARTER TOTALS	81	85	-4	-4.7%	80	1	1.3%	783	607	176	29.0%	804	-21	-2.6%		
CARGO AIRLINES TOTALS	25	44	-19	-43.2%	2	23	1150.0%	195	153	42	27.5%	39	156	400.0%		
<b>AIRPORT TOTALS</b>	<b>3,544</b>	<b>3,303</b>	<b>241</b>	<b>7.3%</b>	<b>4,630</b>	<b>-1,086</b>	<b>-23.5%</b>	<b>33,964</b>	<b>26,484</b>	<b>7,480</b>	<b>28.2%</b>	<b>43,012</b>	<b>-9,048</b>	<b>-21.0%</b>		

Notes:  
 Due to the COVID-19 pandemic that has impacted traffic since 1Q2020, 2019 data is noted here for baseline comparisons  
 Air Canada Express service reinstated July 1, 2021  
 Breeze Airways service began July 3, 2021

# JOHN GLENN COLUMBUS INTERNATIONAL AIRPORT

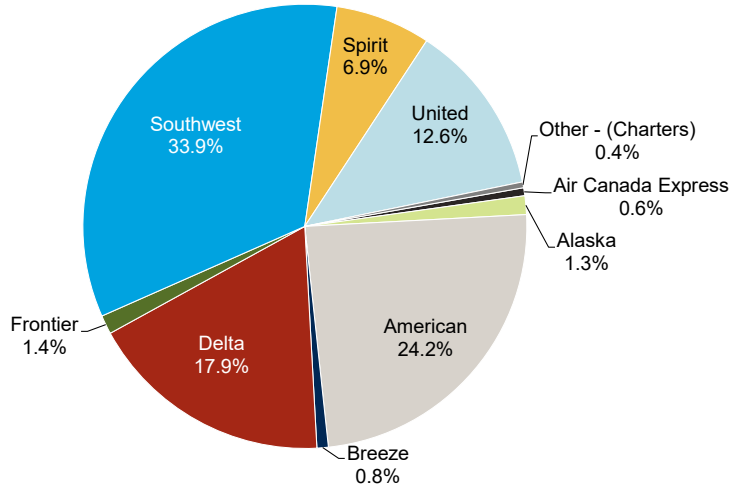
October 2022

## Monthly by Passengers



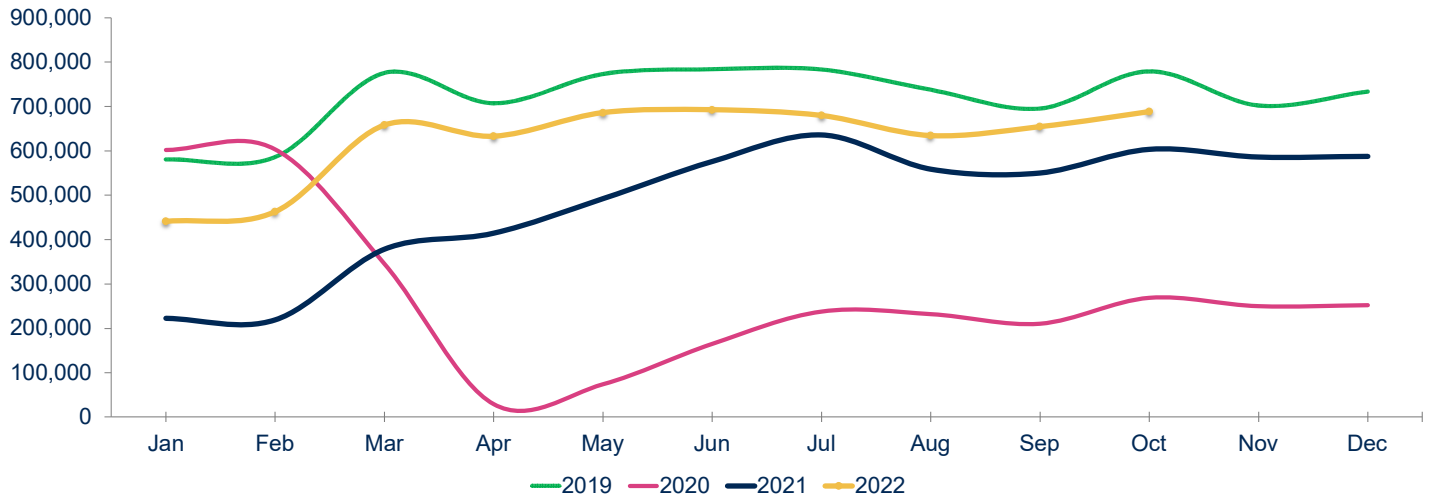
Notes:  
Figures may not add up to 100% due to rounding

## Year to Date by Passengers



Notes:  
Figures may not add up to 100% due to rounding

## Total Passengers



Year	Jan	Feb	Mar	Apr	May	Jun	Jul	Aug	Sep	Oct	Nov	Dec	Total	Growth
2019	580,704	586,025	775,533	707,185	772,991	783,831	783,122	737,440	695,409	779,088	702,070	733,710	8,637,108	6.1%
2020	602,022	603,467	345,418	28,943	73,769	164,700	237,756	232,096	210,233	268,914	249,522	252,287	3,269,127	-62.2%
2021	222,576	218,588	378,159	413,942	492,089	575,626	635,429	558,762	550,019	603,585	585,811	587,736	5,822,322	78.1%
2022	440,753	462,587	658,147	633,049	685,860	692,343	679,423	634,576	654,190	688,029			6,228,957	
22 vs. 21	98.0%	111.6%	74.0%	52.9%	39.4%	20.3%	6.9%	13.6%	18.9%	14.0%				YE Peak Month
22 vs. 19	-24.1%	-21.1%	-15.1%	-10.5%	-11.3%	-11.7%	-13.2%	-13.9%	-5.9%	-11.7%				YE Lowest Month

# RICKENBACKER INTERNATIONAL AIRPORT

October 2022

12/6/2022

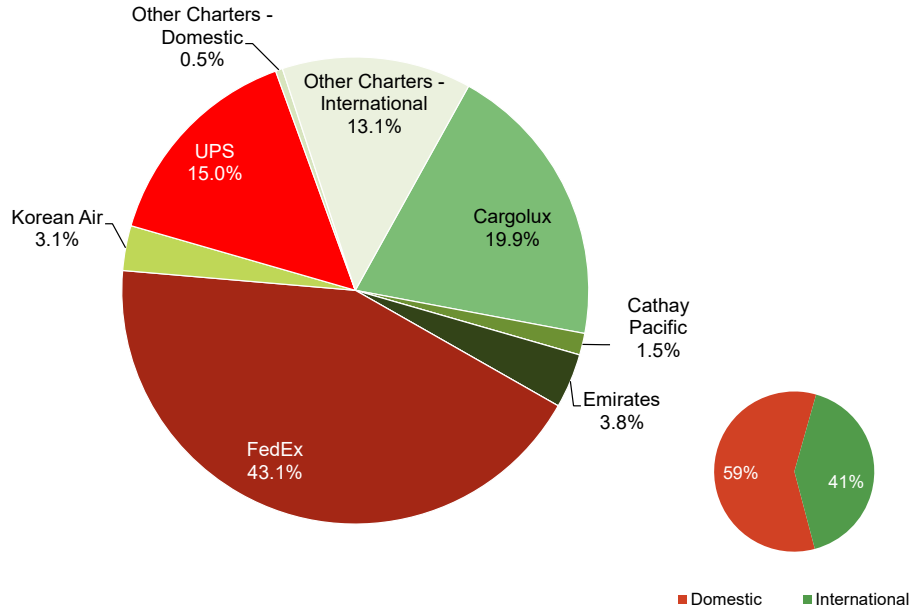
PASSENGERS	Total Passengers - Monthly							Total Passengers - Year to Date						
	Totals		Compared to 2021 (YOY)		Compared to 2019			Totals		Compared to 2021 (YOY)		Compared to 2019		
	Oct 2022	Oct 2021	Actual Change	Percent Change	Oct 2019	Actual Change	Percent Change	YTD 2022	YTD 2021	Actual Change	Percent Change	YTD 2019	Actual Change	Percent Change
Airline														
Allegiant Air	17,420	22,114	-4,694	-21.2%	20,875	-3,455	-16.6%	256,023	255,140	883	0.3%	264,573	-8,550	-3.2%
Miami Air	-	-	-	-	-	-	-	-	-	-	-	775	-775	-100.0%
Sun Country	-	-	-	-	320	-320	-100.0%	640	122	518	424.6%	471	169	35.9%
Other Charters	-	-	-	-	623	-623	-100.0%	74	1,464	-1,390	-94.9%	3,132	-3,058	-97.6%
<b>AIRPORT TOTALS</b>	<b>17,420</b>	<b>22,114</b>	<b>-4,694</b>	<b>-21.2%</b>	<b>21,818</b>	<b>-4,398</b>	<b>-20.2%</b>	<b>256,737</b>	<b>256,726</b>	<b>11</b>	<b>0.0%</b>	<b>268,951</b>	<b>-12,214</b>	<b>-4.5%</b>
CARGO	Total Cargo (Freight and Mail) - Monthly							Total Cargo (Freight and Mail) - Year-To-Date						
	Totals		Compared to 2021 (YOY)		Compared to 2019			Totals		Compared to 2021 (YOY)		Compared to 2019		
	Oct 2022	Oct 2021	Actual Change	Percent Change	Oct 2019	Actual Change	Percent Change	YTD 2022	YTD 2021	Actual Change	Percent Change	YTD 2019	Actual Change	Percent Change
Airline														
AirBridgeCargo	-	-	-	-	1,135,338	-1,135,338	-100.0%	-	-	-	-	14,237,248	-14,237,248	-100.0%
Asiana	-	-	-	-	1,004,241	-1,004,241	-100.0%	-	-	-	-	2,525,098	-2,525,098	-100.0%
Cargolux	2,834,544	3,322,032	-487,488	-14.7%	4,553,111	-1,718,567	-37.7%	35,643,523	42,551,996	-6,908,473	-16.2%	34,798,281	845,242	2.4%
Cathay Pacific	215,100	3,678,260	-3,463,160	-94.2%	2,647,543	-2,432,443	-91.9%	7,563,939	12,684,643	-5,120,704	-40.4%	20,486,102	-12,922,163	-63.1%
China Airlines	-	-	-	-	1,576,699	-1,576,699	-100.0%	-	-	-	-	13,391,736	-13,391,736	-100.0%
Emirates	537,966	4,354,544	-3,816,578	-87.6%	3,631,496	-3,093,530	-85.2%	15,299,459	39,935,179	-24,635,720	-61.7%	26,079,098	-10,779,639	-41.3%
Etiihad	-	-	-	-	1,017,173	-1,017,173	-100.0%	-	662,381	-662,381	-100.0%	14,004,364	-14,004,364	-100.0%
FedEx	6,143,728	7,073,089	-929,361	-13.1%	7,282,718	-1,138,990	-15.6%	59,952,110	67,573,854	-7,621,744	-11.3%	70,128,164	-10,176,054	-14.5%
Korean Air	445,022	4,445,424	-4,000,402	-90.0%	-	445,022	-	20,540,528	38,318,348	-17,777,820	-46.4%	-	20,540,528	-
UPS	2,133,479	2,353,744	-220,265	-9.4%	2,400,266	-266,787	-11.1%	21,206,922	22,568,973	-1,362,051	-6.0%	22,451,293	-1,244,371	-5.5%
Other Cargo Charters - Domestic	69,291	21,537	47,754	221.7%	418,294	-349,003	-83.4%	473,459	240,922	232,537	96.5%	3,837,495	-3,364,036	-87.7%
Other Cargo Charters - International	1,868,465	3,904,126	-2,035,661	-52.1%	2,617,450	-748,985	-28.6%	37,003,596	56,148,838	-19,145,242	-34.1%	11,575,150	25,428,446	219.7%
<b>AIRPORT TOTALS</b>	<b>14,247,595</b>	<b>29,152,756</b>	<b>-14,905,161</b>	<b>-51.1%</b>	<b>28,284,329</b>	<b>-14,036,734</b>	<b>-49.6%</b>	<b>197,683,536</b>	<b>280,685,134</b>	<b>-83,001,598</b>	<b>-29.6%</b>	<b>233,514,028</b>	<b>-35,830,492</b>	<b>-15.3%</b>
TOTAL DOMESTIC	8,346,498	9,448,370	-1,101,872	-11.7%	10,101,278	-1,754,780	-17.4%	81,632,491	90,383,749	-8,751,258	-9.7%	96,416,952	-14,784,461	-15.3%
TOTAL INTERNATIONAL	5,901,097	19,704,386	-13,803,289	-70.1%	18,183,051	-12,281,954	-67.5%	116,051,045	190,301,385	-74,250,340	-39.0%	137,097,076	-21,046,031	-15.4%
<b>AIRPORT TOTALS</b>	<b>14,247,595</b>	<b>29,152,756</b>	<b>-14,905,161</b>	<b>-51.1%</b>	<b>28,284,329</b>	<b>-14,036,734</b>	<b>-49.6%</b>	<b>197,683,536</b>	<b>280,685,134</b>	<b>-83,001,598</b>	<b>-29.6%</b>	<b>233,514,028</b>	<b>-35,830,492</b>	<b>-15.3%</b>
AIRCRAFT OPERATIONS	Actual Landing Operations - Monthly							Actual Landing Operations - Year to Date						
	Totals		Compared to 2021 (YOY)		Compared to 2019			Totals		Compared to 2021 (YOY)		Compared to 2019		
	Oct 2022	Oct 2021	Actual Change	Percent Change	Oct 2019	Actual Change	Percent Change	YTD 2022	YTD 2021	Actual Change	Percent Change	YTD 2019	Actual Change	Percent Change
Airline														
Allegiant Air	61	85	-24	-28.2%	69	-8	-11.6%	857	999	-142	-14.2%	906	-49	-5.4%
Miami Air	-	-	-	-	-	-	-	-	-	-	-	6	-6	-100.0%
Sun Country	-	-	-	-	1	-1	-100.0%	3	2	1	50.0%	2	1	50.0%
Other Charters	-	-	-	-	4	-4	-100.0%	1	12	-11	-91.7%	34	-33	-97.1%
<b>PASSENGER OPERATIONS TOTALS</b>	<b>61</b>	<b>85</b>	<b>-24</b>	<b>-28.2%</b>	<b>74</b>	<b>-13</b>	<b>-17.6%</b>	<b>861</b>	<b>1,013</b>	<b>-152</b>	<b>-15.0%</b>	<b>948</b>	<b>-87</b>	<b>-9.2%</b>
AirBridgeCargo	-	-	-	-	9	-9	-100.0%	-	-	-	-	70	-70	-100.0%
Asiana	-	-	-	-	4	-4	-100.0%	-	-	-	-	10	-10	-100.0%
Cargolux	13	12	1	8.3%	19	-6	-31.6%	138	152	-14	-9.2%	169	-31	-18.3%
Cathay Pacific	4	25	-21	-84.0%	18	-14	-77.8%	63	86	-23	-26.7%	163	-100	-61.3%
China Airlines	-	-	-	-	8	-8	-100.0%	-	1	-1	-100.0%	87	-87	-100.0%
Emirates	3	40	-37	-92.5%	19	-16	-84.2%	137	345	-208	-60.3%	161	-24	-14.9%
Etiihad	-	-	-	-	5	-5	-100.0%	-	5	-5	-100.0%	67	-67	-100.0%
FedEx	134	141	-7	-5.0%	147	-13	-8.8%	1,302	1,333	-31	-2.3%	1,377	-75	-5.4%
Korean Air	8	53	-45	-84.9%	-	8	-	252	426	-174	-40.8%	-	252	-
UPS	25	28	-3	-10.7%	46	-21	-45.7%	265	265	0	0.0%	420	-155	-36.9%
Other Cargo Charters - Domestic	107	60	47	78.3%	71	36	50.7%	823	679	144	21.2%	598	225	37.6%
Other Cargo Charters - International	13	31	-18	-58.1%	13	-	0.0%	294	330	-36	-10.9%	61	233	382.0%
<b>CARGO OPERATIONS TOTALS</b>	<b>307</b>	<b>390</b>	<b>-83</b>	<b>-21.3%</b>	<b>359</b>	<b>-52</b>	<b>-14.5%</b>	<b>3,274</b>	<b>3,622</b>	<b>-348</b>	<b>-9.6%</b>	<b>3,183</b>	<b>91</b>	<b>2.9%</b>
<b>AIRPORT TOTALS</b>	<b>368</b>	<b>475</b>	<b>-107</b>	<b>-22.5%</b>	<b>433</b>	<b>-65</b>	<b>-15.0%</b>	<b>4,135</b>	<b>4,635</b>	<b>-500</b>	<b>-10.8%</b>	<b>4,131</b>	<b>4</b>	<b>0.1%</b>

Notes: Due to the COVID-19 pandemic that has impacted traffic since 1Q2020, 2019 data is noted here for baseline comparisons

# RICKENBACKER INTERNATIONAL AIRPORT

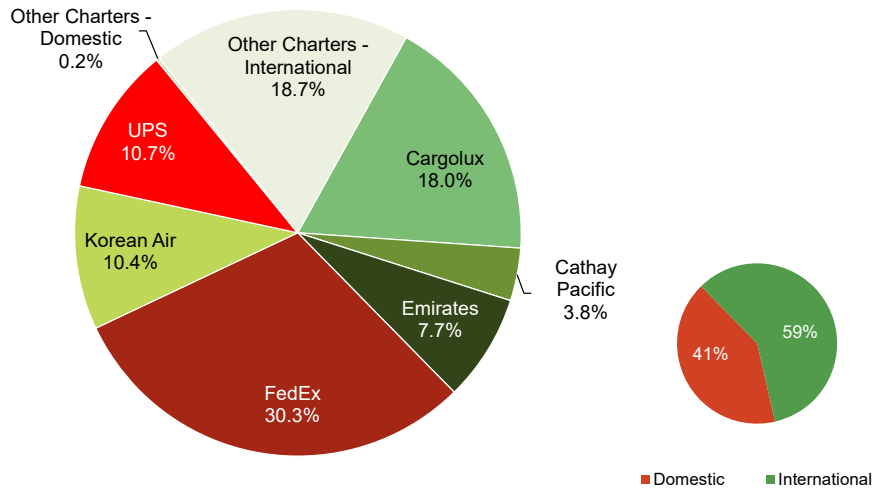
October 2022

## Monthly Cargo by Weights



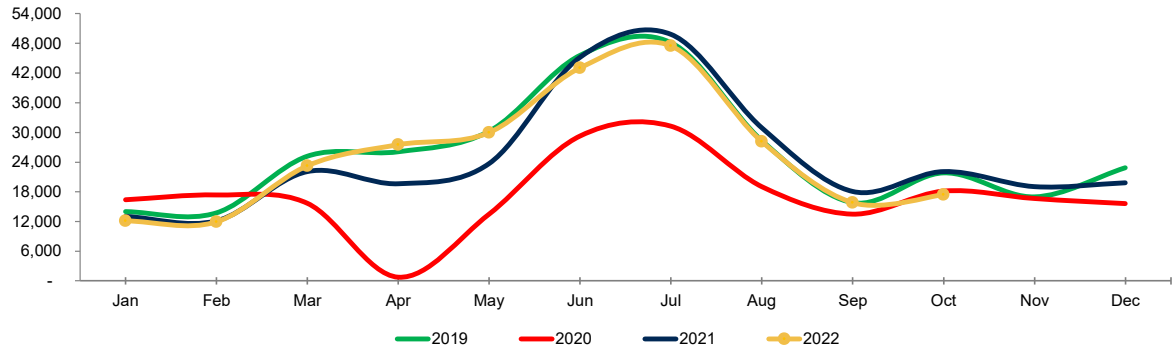
Note: Figures may not add up to 100% due to rounding

## Year to Date Cargo by Weights



Note: Figures may not add up to 100% due to rounding

## Total Passengers



Year	Jan	Feb	Mar	Apr	May	Jun	Jul	Aug	Sep	Oct	Nov	Dec	Total	Growth
2019	13,969	13,763	25,190	26,115	30,201	45,570	48,160	28,369	15,796	21,818	16,981	22,848	308,780	0.5%
2020	16,408	17,366	15,678	739	13,491	29,284	31,242	19,071	13,498	18,123	16,623	15,637	207,160	-32.9%
2021	13,016	12,126	22,110	19,655	23,696	45,199	49,810	30,952	18,048	22,114	19,029	19,829	295,584	42.7%
2022	12,115	11,934	23,272	27,520	29,943	43,038	47,481	28,193	15,821	17,420			256,737	

22 vs. 21	-6.9%	-1.6%	5.3%	40.0%	26.4%	-4.8%	-4.7%	-8.9%	-12.3%	-21.2%				YE Peak Month
22 vs. 19	-13.3%	-13.3%	-7.6%	5.4%	-0.9%	-5.6%	-1.4%	-0.6%	0.2%	-20.2%				YE Lowest Month

# COMBINED AIRPORTS TRAFFIC REPORT

November 2022

12/6/2022

PASSENGERS	Total Passengers - Monthly							Total Passengers - Year to Date						
	Compared to 2021 (YOY)				Compared to 2019			Compared to 2021 (YOY)				Compared to 2019		
	Nov 2022	Nov 2021	Actual Change	Percent Change	Nov 2019	Actual Change	Percent Change	YTD 2022	YTD 2021	Actual Change	Percent Change	YTD 2019	Actual Change	Percent Change
Airports														
John Glenn International	688,029	603,585	84,444	14.0%	779,088	-91,059	-11.7%	6,228,957	4,648,775	1,580,182	34.0%	7,201,328	-972,371	-13.5%
Rickenbacker International	17,420	22,114	-4,694	-21.2%	21,818	-4,398	-20.2%	256,737	256,726	11	0.0%	268,951	-12,214	-4.5%
AIRPORT TOTALS	705,449	625,699	79,750	12.7%	800,906	-95,457	-11.9%	6,485,694	4,905,501	1,580,193	32.2%	7,470,279	-984,585	-13.2%
CARGO	Total Cargo (Freight and Mail) - Monthly							Total Cargo (Freight and Mail) - Year-To-Date						
	Compared to 2021 (YOY)				Compared to 2019			Compared to 2021 (YOY)				Compared to 2019		
	Nov 2022	Nov 2021	Actual Change	Percent Change	Nov 2019	Actual Change	Percent Change	YTD 2022	YTD 2021	Actual Change	Percent Change	YTD 2019	Actual Change	Percent Change
Airports														
John Glenn International	886,197	923,237	-37,040	-4.0%	937,909	-51,712	-5.5%	7,617,444	7,313,371	304,073	4.2%	8,409,248	-791,804	-9.4%
Rickenbacker International	14,247,595	29,152,756	-14,905,161	-51.1%	28,284,329	-14,036,734	-49.6%	197,683,536	280,685,134	-83,001,598	-29.6%	233,514,028	-35,830,492	-15.3%
AIRPORT TOTALS	15,133,792	30,075,993	-14,942,201	-49.7%	29,222,238	-14,088,446	-48.2%	205,300,980	287,998,505	-82,697,525	-28.7%	241,923,276	-36,622,296	-15.1%
AIRCRAFT OPERATIONS	Actual Landing Operations - Monthly							Actual Landing Operations - Year to Date						
	Compared to 2021 (YOY)				Compared to 2019			Compared to 2021 (YOY)				Compared to 2019		
	Nov 2022	Nov 2021	Actual Change	Percent Change	Nov 2019	Actual Change	Percent Change	YTD 2022	YTD 2021	Actual Change	Percent Change	YTD 2019	Actual Change	Percent Change
Airports														
John Glenn International	3,544	3,303	241	7.3%	4,630	-1,086	-23.5%	33,964	26,484	7,480	28.2%	43,012	-9,048	-21.0%
Rickenbacker International	368	475	-107	-22.5%	433	-65	-15.0%	4,135	4,635	-500	-10.8%	4,131	4	0.1%
AIRPORT TOTALS	3,912	3,778	134	3.5%	5,063	-1,151	-22.7%	38,099	31,119	6,980	22.4%	47,143	-9,044	-19.2%

Notes: Due to the COVID-19 pandemic that has impacted traffic since 1Q2020, 2019 data is noted here for baseline comparisons

Operating Airline	Brand Airline	Terminal / Non-Terminal	Concourse	Sig / Non-Sig	Scheduled / Charter / Freight	Pax - Enplane	Pax - Deplane	Mail - Enplane	Mail - Deplane	Freight - Enplane	Freight - Deplane	Landings	Landed Weight
<b>TERMINAL PASSENGER FLIGHT ACTIVITY: Scheduled and charter flights operating from the CMH terminal</b>													
<b>Terminal - Scheduled Passenger Flight Activity</b>													
Air Canada Express - Jazz	Air Canada	Terminal	Concourse B	Signatory	Scheduled	2,044	2,494	-	-	-	-	60	2,848,100
Alaska Airlines	Alaska	Terminal	Concourse C	Signatory	Scheduled	4,635	4,975	143	-	33,174	5,472	31	4,768,400
American Airlines	American	Terminal	Concourse B	Signatory	Scheduled	38,827	39,731	4,213	13,148	13,538	1,402	266	40,508,104
American - Envoy Air	American	Terminal	Concourse B	Signatory	Scheduled	11,795	11,746	-	-	481	1,402	180	13,488,360
American - Mesa	American	Terminal	Concourse B	Signatory	Scheduled	-	-	-	-	-	-	-	-
American - Piedmont	American	Terminal	Concourse B	Signatory	Scheduled	-	-	-	-	-	-	-	-
American - PSA	American	Terminal	Concourse B	Signatory	Scheduled	7,594	7,840	-	-	196	1,129	109	8,177,800
American - Republic	American	Terminal	Concourse B	Signatory	Scheduled	20,844	21,686	-	-	542	643	382	28,559,620
American - Skywest	American	Terminal	Concourse B	Signatory	Scheduled	-	-	-	-	-	-	-	-
Breeze Airways	Breeze	Terminal	Concourse C	Signatory	Scheduled	2,187	2,252	-	-	-	-	26	2,882,293
Delta Air Lines	Delta	Terminal	Concourse C	Signatory	Scheduled	30,878	30,086	30,542	783	21,418	31,779	201	30,243,400
Delta Connection - Endeavor	Delta	Terminal	Concourse C	Signatory	Scheduled	5,373	5,116	-	-	-	-	96	6,450,900
Delta Connection - Republic	Delta	Terminal	Concourse C	Signatory	Scheduled	15,081	15,869	-	-	11	-	264	19,566,384
Delta Connection - Skywest	Delta	Terminal	Concourse C	Signatory	Scheduled	10,074	10,633	-	-	-	-	158	11,822,359
Frontier Airlines	Frontier	Terminal	Concourse C	Signatory	Scheduled	5,163	4,464	-	-	-	-	31	4,853,045
Southwest Airlines	Southwest	Terminal	Concourse A	Signatory	Scheduled	116,780	114,314	-	-	409,314	160,225	907	122,158,400
Spirit Airlines	Spirit	Terminal	Concourse B	Signatory	Scheduled	19,028	18,776	-	-	-	-	139	19,906,895
United Airlines	United	Terminal	Concourse B	Signatory	Scheduled	30,990	31,415	15,365	8,867	14,074	23,402	244	34,597,700
United Express - Air Wisconsin	United	Terminal	Concourse B	Signatory	Scheduled	214	224	-	-	-	-	5	235,000
United Express - CommutAir	United	Terminal	Concourse B	Signatory	Scheduled	1,436	1,368	-	-	-	-	31	1,364,000
United Express - GoJet	United	Terminal	Concourse B	Signatory	Scheduled	137	142	-	-	-	-	3	183,000
United Express - Mesa	United	Terminal	Concourse B	Signatory	Scheduled	2,082	2,250	-	-	-	-	33	2,475,000
United Express - Republic	United	Terminal	Concourse B	Signatory	Scheduled	14,771	14,634	-	-	-	-	236	17,409,482
United Express - Skywest	United	Terminal	Concourse B	Signatory	Scheduled	2,533	2,464	-	-	-	-	36	2,642,538
<b>Terminal - Charter Passenger Flight Activity</b>													
Southwest Airlines	Southwest	Terminal	Concourse A	Signatory	Charter	136	135	-	-	-	-	1	128,000
Sun Country	Sun Country	Terminal	Concourse C	Non-Signatory	Charter	494	389	-	-	-	-	4	585,200
<b>NON-TERMINAL FLIGHT ACTIVITY: Flights operating at a location other than the CMH terminal</b>													
<b>Non-Terminal - Charter Passenger Flight Activity</b>													
Air Canada - Jetz	Air Canada	Non-Terminal	Non-Terminal	Signatory	Charter	49	49	-	-	-	-	1	134,481
Breeze Airways	Breeze	Non-Terminal	Non-Terminal	Non-Signatory	Charter	-	-	-	-	-	-	2	189,598
Delta Air Lines	Delta	Non-Terminal	Non-Terminal	Signatory	Charter	-	44	-	-	-	-	3	594,000
Freight Runners Express	Freight Runners Express	Non-Terminal	Non-Terminal	Non-Signatory	Charter	120	120	-	-	-	-	7	339,500
Kalitta	Kalitta	Non-Terminal	Non-Terminal	Non-Signatory	Charter	3	3	-	-	-	-	4	61,200
Royal Air Freight	Royal Air Freight	Non-Terminal	Non-Terminal	Non-Signatory	Charter	5	-	-	-	-	-	1	18,000
Sun Country	Sun Country	Non-Terminal	Non-Terminal	Non-Signatory	Charter	39	108	-	-	-	-	7	989,900
Swift Air	Swift Air	Non-Terminal	Non-Terminal	Non-Signatory	Charter	701	564	-	-	-	-	19	2,450,800
Ultimate Jet Charters	Ultimate Jet Charters	Non-Terminal	Non-Terminal	Non-Signatory	Charter	60	65	-	-	-	-	6	192,000
United Airlines	United	Non-Terminal	Non-Terminal	Signatory	Charter	-	-	-	-	-	-	5	853,190
<b>Non-Terminal - Diversion / Ferry Flight Activity</b>													
American - Envoy Air	American	Non-Terminal	Non-Terminal	Signatory	Diversion / Ferry	-	-	-	-	-	-	1	74,950
American - Republic	American	Non-Terminal	Non-Terminal	Signatory	Diversion / Ferry	-	-	-	-	-	-	8	586,960
Breeze Airways	Breeze	Non-Terminal	Non-Terminal	Signatory	Diversion / Ferry	-	-	-	-	-	-	1	94,799
Delta Connection - Endeavor	Delta	Non-Terminal	Non-Terminal	Signatory	Diversion / Ferry	-	-	-	-	-	-	2	122,100
Delta Connection - Republic	Delta	Non-Terminal	Non-Terminal	Signatory	Diversion / Ferry	-	-	-	-	-	-	7	522,053
Delta Connection - Skywest	Delta	Non-Terminal	Non-Terminal	Signatory	Diversion / Ferry	-	-	-	-	-	-	1	75,100
Southwest Airlines	Southwest	Non-Terminal	Non-Terminal	Signatory	Diversion / Ferry	-	-	-	-	-	-	1	128,000
<b>Non-Terminal - Freight Flight Activity</b>													
Ameristar Jet Charter	Ameristar Jet Charter	Non-Terminal	Non-Terminal	Non-Signatory	Freight	-	-	-	-	18,000	9,800	4	272,400
Berry Aviation	Berry Aviation	Non-Terminal	Non-Terminal	Non-Signatory	Freight	-	-	-	-	-	-	2	49,600
Castle Aviation	Castle Aviation	Non-Terminal	Non-Terminal	Non-Signatory	Freight	75	-	-	-	-	-	1	5,500
Freight Runners Express	Freight Runners Express	Non-Terminal	Non-Terminal	Non-Signatory	Freight	-	-	-	-	2,800	-	1	25,794
IFL Group	IFL Group	Non-Terminal	Non-Terminal	Non-Signatory	Freight	-	-	-	-	23,601	-	5	411,202
Kalitta Charters II	Kalitta Charters II	Non-Terminal	Non-Terminal	Non-Signatory	Freight	-	-	-	-	32,057	-	3	483,000
Priority Air Charter	Priority Air Charter	Non-Terminal	Non-Terminal	Non-Signatory	Freight	100	205	-	-	-	-	2	18,124
Royal Air Freight	Royal Air Freight	Non-Terminal	Non-Terminal	Non-Signatory	Freight	-	-	-	-	624	7,672	7	179,220
<b>SUBTOTAL: Terminal Passenger Flight Activity</b>						<b>343,096</b>	<b>343,003</b>	<b>50,263</b>	<b>22,798</b>	<b>492,748</b>	<b>225,454</b>	<b>3,443</b>	<b>375,853,980</b>
<b>SUBTOTAL: Non-Terminal Flight Activity</b>						<b>977</b>	<b>953</b>	<b>-</b>	<b>-</b>	<b>18,799</b>	<b>76,135</b>	<b>101</b>	<b>8,881,471</b>
<b>MONTHLY GRAND TOTAL: Terminal &amp; Non-Terminal Activity</b>						<b>344,073</b>	<b>343,956</b>	<b>50,263</b>	<b>22,798</b>	<b>511,547</b>	<b>301,589</b>	<b>3,544</b>	<b>384,735,451</b>
						<b>688,029</b>		<b>73,061</b>		<b>813,136</b>			