



# MONTHLY STATISTICS REPORT

July 2022

Report compiled from self-reported airline statistics



**COLUMBUS**  
REGIONAL AIRPORT AUTHORITY

# JOHN GLENN COLUMBUS INTERNATIONAL AIRPORT

July 2022

8/23/2022

PASSENGERS	Total Passengers - Monthly								Total Passengers - Year to Date								
Airline	Totals		Compared to 2021 (YOY)				Compared to 2019			YTD 2022	Compared to 2021 (YOY)				Compared to 2019		
	Jul 2022	Jul 2021	Actual Change	Percent Change	Jul 2019	Actual Change	Percent Change	YTD 2019	YTD 2021		Actual Change	Percent Change	YTD 2019	Actual Change	Percent Change		
<b>Air Canada Express</b>	5,565	1,707	3,858	226.0%	8,181	-2,616	-32.0%	42,992	1,707	19,911	1166.4%	42,992	-21,374	-49.7%			
<b>Alaska</b>	10,644	10,289	355	3.5%	8,900	1,744	19.6%	39,760	43,572	10,509	24.1%	39,760	14,321	36.0%			
<b>American</b>	166,050	148,402	17,648	11.9%	187,491	-21,441	-11.4%	1,185,499	674,235	358,024	53.1%	1,185,499	-153,240	-12.9%			
<b>Breeze</b>	6,296	2,484	3,812	153.5%	-	6,296	-	-	39,807	2,484	37,323	1502.5%	-	39,807			
<b>Delta</b>	117,692	124,266	-6,574	-5.3%	174,094	-56,402	-32.4%	1,049,384	514,549	236,692	46.0%	1,049,384	-298,143	-28.4%			
<b>Frontier</b>	10,105	7,020	3,085	43.9%	12,678	-2,573	-20.3%	67,760	41,185	15,827	38.4%	67,760	-10,748	-15.9%			
<b>Southwest</b>	241,736	208,262	33,474	16.1%	245,239	-3,503	-1.4%	1,663,784	1,020,937	421,210	41.3%	1,663,784	-221,637	-13.3%			
<b>Spirit</b>	33,599	63,952	-30,353	-47.5%	34,665	-1,066	-3.1%	275,310	326,521	2,949	0.9%	275,310	54,160	19.7%			
<b>United</b>	84,784	66,190	18,594	28.1%	108,944	-24,160	-22.2%	637,422	298,292	207,478	69.6%	637,422	-131,652	-20.7%			
<b>AIRLINES TOTALS</b>	676,471	632,572	43,899	6.9%	780,192	-103,721	-13.3%	4,961,911	2,923,482	1,309,923	44.8%	4,961,911	-728,506	-14.7%			
<b>CHARTER TOTALS</b>	2,952	2,857	95	3.3%	2,930	22	0.8%	18,757	12,927	5,830	45.1%	18,757	-8,723	-31.7%			
<b>AIRPORT TOTALS</b>	679,423	635,429	43,994	6.9%	783,122	-103,699	-13.2%	4,252,162	2,936,409	1,315,753	44.8%	4,989,391	-737,229	-14.8%			

CARGO	Total Cargo (Freight and Mail) - Monthly								Total Cargo (Freight and Mail) - Year-To-Date								
Airline	Totals		Compared to 2021 (YOY)				Compared to 2019			YTD 2022	Compared to 2021 (YOY)				Compared to 2019		
	Jul 2022	Jul 2021	Actual Change	Percent Change	Jul 2019	Actual Change	Percent Change	YTD 2019	YTD 2021		Actual Change	Percent Change	YTD 2019	Actual Change	Percent Change		
<b>Alaska</b>	44,876	38,837	6,039	15.5%	27,558	17,318	62.8%	138,332	214,777	39,408	18.3%	138,332	115,853	83.7%			
<b>American</b>	32,881	95,278	-62,397	-65.5%	128,724	-95,843	-74.5%	1,043,410	757,093	-225,212	-29.7%	1,043,410	-511,529	-49.0%			
<b>Delta</b>	48,069	72,653	-24,584	-33.8%	217,141	-169,072	-77.9%	1,167,030	616,852	-23,088	-3.7%	1,167,030	-573,266	-49.1%			
<b>Southwest</b>	485,003	567,377	-82,374	-14.5%	365,604	119,399	32.7%	2,732,678	3,056,064	394,242	12.9%	2,732,678	717,628	26.3%			
<b>United</b>	39,493	27,996	11,497	41.1%	92,370	-52,877	-57.2%	684,344	98,679	209,059	211.9%	684,344	-376,606	-55.0%			
<b>AIRLINES TOTALS</b>	650,322	802,141	-151,819	-18.9%	831,397	-181,075	-21.8%	5,765,794	4,743,465	394,409	8.3%	5,765,794	-627,920	-10.9%			
<b>CARGO AIRLINES TOTALS</b>	-	723	-723	-100.0%	-	0	#DIV/0!	38,382	87,629	117,071	133.6%	38,382	166,318	433.3%			
<b>AIRPORT TOTALS</b>	650,322	802,864	-152,542	-19.0%	831,397	-181,075	-21.8%	5,342,574	4,831,094	511,480	10.6%	5,804,176	-461,602	-8.0%			

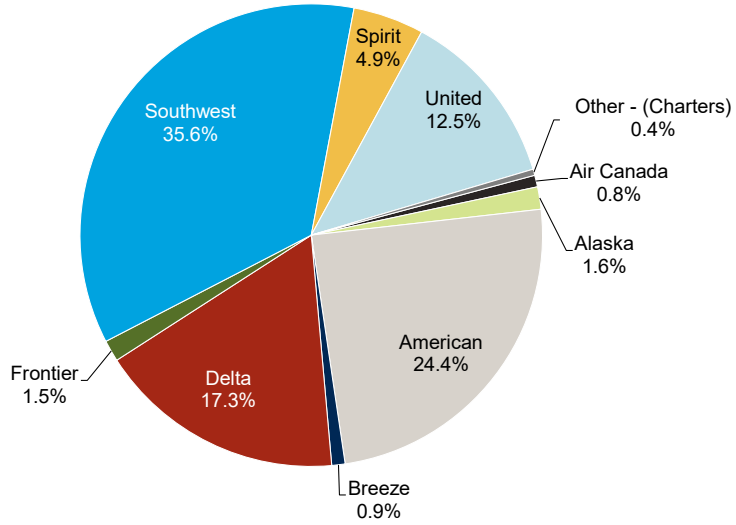
AIRCRAFT OPERATIONS	Actual Landing Operations - Monthly								Actual Landing Operations - Year to Date								
Airline	Totals		Compared to 2021 (YOY)				Compared to 2019			YTD 2022	Compared to 2021 (YOY)				Compared to 2019		
	Jul 2022	Jul 2021	Actual Change	Percent Change	Jul 2019	Actual Change	Percent Change	YTD 2019	YTD 2021		Actual Change	Percent Change	YTD 2019	Actual Change	Percent Change		
<b>Air Canada Express</b>	72	31	41	132.3%	114	-42	-36.8%	712	31	287	925.8%	712	-394	-55.3%			
<b>Alaska</b>	32	31	1	3.2%	31	1	3.2%	148	172	1	0.6%	148	25	16.9%			
<b>American</b>	975	859	116	13.5%	1,356	-381	-28.1%	8,941	4,670	2,258	48.4%	8,941	-2,013	-22.5%			
<b>Breeze</b>	41	26	15	57.7%	-	41	-	-	299	26	273	1050.0%	299	-			
<b>Delta</b>	701	615	86	14.0%	955	-254	-26.6%	6,279	3,547	1,181	33.3%	6,279	-1,551	-24.7%			
<b>Frontier</b>	30	20	10	50.0%	39	-9	-23.1%	221	135	65	48.1%	221	-21	-9.5%			
<b>Southwest</b>	908	783	125	16.0%	1,053	-145	-13.8%	7,043	4,189	1,482	35.4%	7,043	-1,372	-19.5%			
<b>Spirit</b>	111	219	-108	-49.3%	123	-12	-9.8%	941	1,122	41	3.7%	941	222	23.6%			
<b>United</b>	528	523	5	1.0%	733	-205	-28.0%	4,658	2,639	819	31.0%	4,658	-1,200	-25.8%			
<b>AIRLINES TOTALS</b>	3,398	3,107	291	9.4%	4,404	-1,006	-22.8%	22,938	16,531	6,407	38.8%	22,938	-6,005	-20.7%			
<b>CHARTER TOTALS</b>	60	76	-16	-21.1%	83	-23	-27.7%	566	390	176	45.1%	566	-39	-6.4%			
<b>CARGO AIRLINES TOTALS</b>	1	5	-4	-80.0%	1	0	0.0%	115	96	19	19.8%	115	82	248.5%			
<b>AIRPORT TOTALS</b>	3,459	3,188	271	8.5%	4,488	-1,029	-22.9%	23,619	17,017	6,602	38.8%	29,581	-5,962	-20.2%			

Notes:  
 Due to the COVID-19 pandemic that has impacted traffic since 1Q2020, 2019 data is noted here for baseline comparisons  
 Air Canada Express service reinstated July 1, 2021  
 Breeze Airways service began July 3, 2021

# JOHN GLENN COLUMBUS INTERNATIONAL AIRPORT

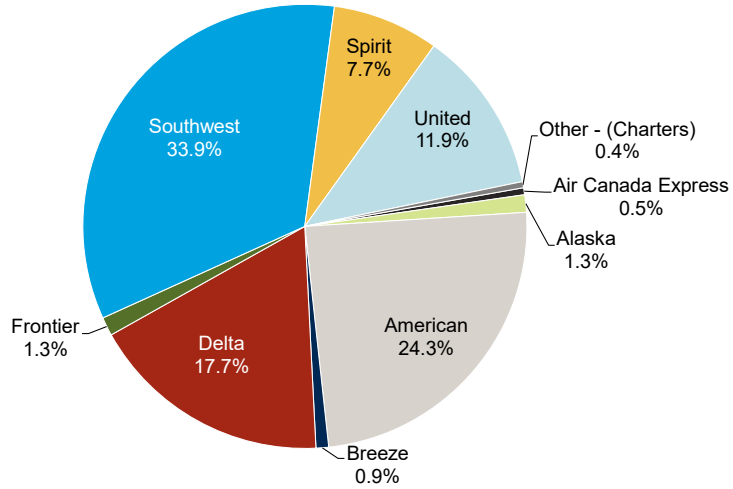
July 2022

## Monthly by Passengers



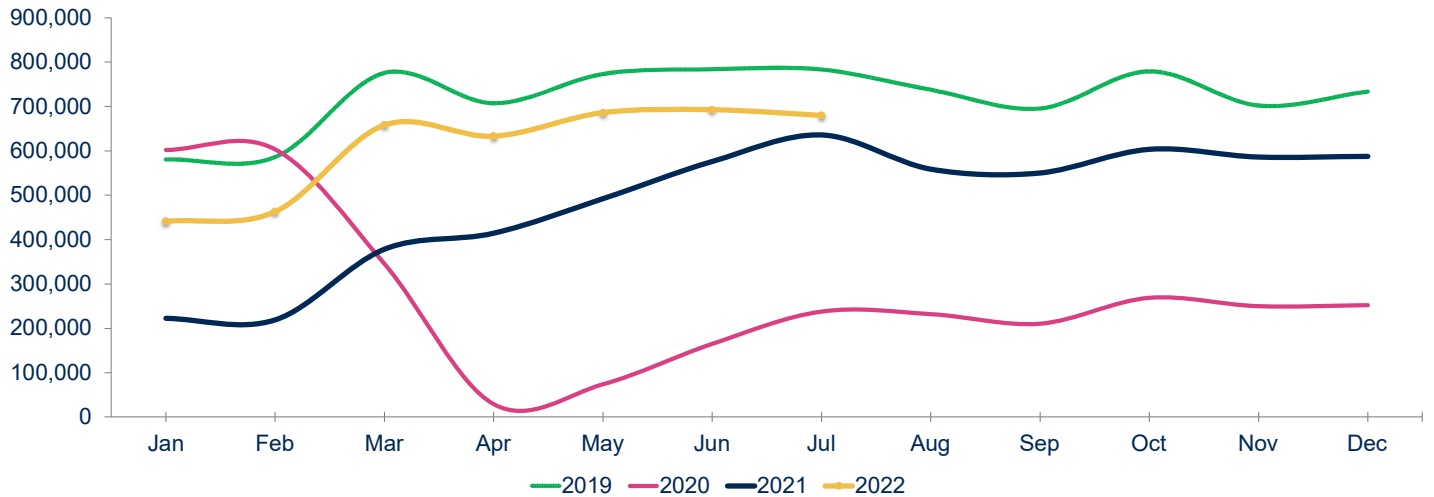
Notes:  
Figures may not add up to 100% due to rounding

## Year to Date by Passengers



Notes:  
Figures may not add up to 100% due to rounding

## Total Passengers



Year	Jan	Feb	Mar	Apr	May	Jun	Jul	Aug	Sep	Oct	Nov	Dec	Total	Growth
2019	580,704	586,025	775,533	707,185	772,991	783,831	783,122	737,440	695,409	779,088	702,070	733,710	8,637,108	6.1%
2020	602,022	603,467	345,418	28,943	73,769	164,700	237,756	232,096	210,233	268,914	249,522	252,287	3,269,127	-62.2%
2021	222,576	218,588	378,159	413,942	492,089	575,626	635,429	558,762	550,019	603,585	585,811	587,736	5,822,322	78.1%
2022	440,753	462,587	658,147	633,049	685,860	692,343	679,423						4,252,162	
22 vs. 21	98.0%	111.6%	74.0%	52.9%	39.4%	20.3%	6.9%							YE Peak Month
22 vs. 19	-24.1%	-21.1%	-15.1%	-10.5%	-11.3%	-11.7%	-13.2%							YE Lowest Month

# RICKENBACKER INTERNATIONAL AIRPORT

July 2022

8/23/2022

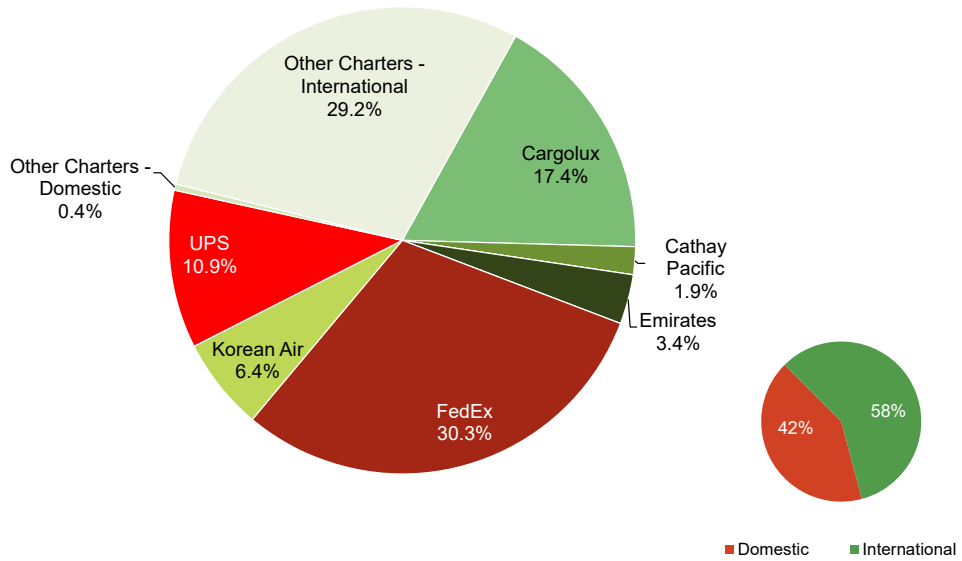
PASSENGERS	Total Passengers - Monthly								Total Passengers - Year to Date							
	Totals		Compared to 2021 (YOY)				Compared to 2019		Totals		Compared to 2021 (YOY)				Compared to 2019	
	Jul 2022	Jul 2021	Actual Change	Percent Change	Jul 2019	Actual Change	Percent Change	YTD 2022	YTD 2021	Actual Change	Percent Change	YTD 2019	Actual Change	Percent Change		
Allegiant Air	47,407	49,810	-2,403	-4.8%	48,160	-753	-1.6%	194,874	184,651	10,223	5.5%	200,120	-5,246	-2.6%		
Miami Air	-	-	-	-	-	-	-	-	-	-	-	775	-775	-100.0%		
Sun Country	-	-	-	-	-	-	-	355	122	233	191.0%	151	204	135.1%		
Other Charters	74	-	74	-	-	-	74	74	839	-765	-91.2%	1,922	-1,848	-96.1%		
<b>AIRPORT TOTALS</b>	<b>47,481</b>	<b>49,810</b>	<b>-2,329</b>	<b>-4.7%</b>	<b>48,160</b>	<b>-679</b>	<b>-1.4%</b>	<b>195,303</b>	<b>185,612</b>	<b>9,691</b>	<b>5.2%</b>	<b>202,968</b>	<b>-7,665</b>	<b>-3.8%</b>		
CARGO	Total Cargo (Freight and Mail) - Monthly								Total Cargo (Freight and Mail) - Year-To-Date							
	Totals		Compared to 2021 (YOY)				Compared to 2019		Totals		Compared to 2021 (YOY)				Compared to 2019	
	Jul 2022	Jul 2021	Actual Change	Percent Change	Jul 2019	Actual Change	Percent Change	YTD 2022	YTD 2021	Actual Change	Percent Change	YTD 2019	Actual Change	Percent Change		
AirBridgeCargo	-	-	-	-	1,299,843	-1,299,843	-100.0%	-	-	-	-	10,813,672	-10,813,672	-100.0%		
Asiana	-	-	-	-	-	-	-	-	-	-	-	-	-	-		
Cargolux	3,264,020	4,821,046	-1,557,026	-32.3%	3,734,920	-470,900	-12.6%	26,995,130	31,115,441	-4,120,311	-13.2%	23,534,993	3,460,137	14.7%		
Cathay Pacific	360,554	1,334,353	-973,799	-73.0%	2,288,579	-1,928,025	-84.2%	6,892,083	4,995,688	1,896,395	38.0%	13,076,082	-6,183,999	-47.3%		
China Airlines	-	-	-	-	1,764,285	-1,764,285	-100.0%	-	-	-	-	8,915,940	-8,915,940	-100.0%		
Emirates	645,077	5,488,811	-4,843,734	-88.2%	2,977,453	-2,332,376	-78.3%	12,766,125	27,508,468	-14,742,343	-53.6%	17,288,039	-4,521,914	-26.2%		
Etihad	-	-	-	-	429,013	-429,013	-100.0%	-	662,381	-662,381	-100.0%	12,702,153	-12,702,153	-100.0%		
FedEx	5,692,536	7,218,632	-1,526,096	-21.1%	6,925,698	-1,233,162	-17.8%	41,717,161	46,120,313	-4,403,152	-9.5%	49,349,557	-7,632,396	-15.5%		
Korean Air	1,206,589	4,084,846	-2,878,257	-70.5%	-	1,206,589	-	18,538,654	24,452,940	-5,914,286	-24.2%	-	18,538,654	-		
UPS	2,055,408	2,442,066	-386,658	-15.8%	2,368,143	-312,735	-13.2%	14,679,398	15,614,252	-934,854	-6.0%	15,394,676	-715,278	-4.6%		
Other Cargo Charters - Domestic	80,385	17,970	62,415	347.3%	276,886	-196,501	-71.0%	330,100	169,930	160,170	94.3%	1,940,119	-1,610,019	-83.0%		
Other Cargo Charters - International	5,479,066	6,765,045	-1,285,979	-19.0%	769,521	4,709,545	612.0%	30,403,823	41,517,634	-11,113,811	-26.8%	7,369,249	23,034,574	312.6%		
<b>AIRPORT TOTALS</b>	<b>18,783,635</b>	<b>32,172,769</b>	<b>-13,389,134</b>	<b>-41.6%</b>	<b>22,834,341</b>	<b>-4,050,706</b>	<b>-17.7%</b>	<b>152,322,474</b>	<b>192,157,047</b>	<b>-39,834,573</b>	<b>-20.7%</b>	<b>160,384,479</b>	<b>-8,062,005</b>	<b>-5.0%</b>		
TOTAL DOMESTIC	7,828,329	9,678,668	-1,850,339	-19.1%	9,570,727	-1,742,398	-18.2%	56,726,659	61,904,495	-5,177,836	-8.4%	66,684,352	-9,957,693	-14.9%		
TOTAL INTERNATIONAL	10,955,306	22,494,101	-11,538,795	-51.3%	13,263,614	-2,308,308	-17.4%	95,595,815	130,252,552	-34,656,737	-26.6%	93,700,127	1,895,688	2.0%		
<b>AIRPORT TOTALS</b>	<b>18,783,635</b>	<b>32,172,769</b>	<b>-13,389,134</b>	<b>-41.6%</b>	<b>22,834,341</b>	<b>-4,050,706</b>	<b>-17.7%</b>	<b>152,322,474</b>	<b>192,157,047</b>	<b>-39,834,573</b>	<b>-20.7%</b>	<b>160,384,479</b>	<b>-8,062,005</b>	<b>-5.0%</b>		
AIRCRAFT OPERATIONS	Actual Landing Operations - Monthly								Actual Landing Operations - Year to Date							
	Totals		Compared to 2021 (YOY)				Compared to 2019		Totals		Compared to 2021 (YOY)				Compared to 2019	
	Jul 2022	Jul 2021	Actual Change	Percent Change	Jul 2019	Actual Change	Percent Change	YTD 2022	YTD 2021	Actual Change	Percent Change	YTD 2019	Actual Change	Percent Change		
Allegiant Air	156	172	-16	-9.3%	164	-8	-4.9%	647	728	-81	-11.1%	684	-37	-5.4%		
Miami Air	-	-	-	-	-	-	-	-	-	-	-	6	-6	-100.0%		
Sun Country	-	-	-	-	-	-	-	2	2	-	0.0%	1	1	100.0%		
Other Charters	1	-	1	-	-	-	1	1	8	-7	-87.5%	26	-25	-96.2%		
<b>PASSENGER OPERATIONS TOTALS</b>	<b>157</b>	<b>172</b>	<b>-15</b>	<b>-8.7%</b>	<b>164</b>	<b>-7</b>	<b>-4.3%</b>	<b>650</b>	<b>738</b>	<b>-88</b>	<b>-11.9%</b>	<b>717</b>	<b>-67</b>	<b>-9.3%</b>		
AirBridgeCargo	-	-	-	-	9	-9	-100.0%	-	-	-	-	43	-43	-100.0%		
Asiana	-	-	-	-	-	-	-	-	-	-	-	-	-	-		
Cargolux	12	17	-5	-29.4%	18	-6	-33.3%	98	111	-13	-11.7%	115	-17	-14.8%		
Cathay Pacific	6	8	-2	-25.0%	17	-11	-64.7%	50	38	12	31.6%	111	-61	-55.0%		
China Airlines	-	-	-	-	11	-11	-100.0%	-	-	-	-	61	-61	-100.0%		
Emirates	4	43	-39	-90.7%	17	-13	-76.5%	124	228	-104	-45.6%	107	17	15.9%		
Etihad	-	-	-	-	2	-2	-100.0%	-	5	-5	-100.0%	60	-60	-100.0%		
FedEx	131	142	-11	-7.7%	136	-5	-3.7%	885	911	-26	-2.9%	961	-76	-7.9%		
Korean Air	14	46	-32	-69.6%	-	14	-	222	269	-47	-17.5%	-	222	-		
UPS	27	29	-2	-6.9%	41	-14	-34.1%	185	185	0	0.0%	295	-110	-37.3%		
Other Cargo Charters - Domestic	104	64	40	62.5%	66	38	57.6%	542	479	63	13.2%	376	166	44.1%		
Other Cargo Charters - International	32	34	-2	-5.9%	5	27	540.0%	219	223	-4	-1.8%	37	182	491.9%		
<b>CARGO OPERATIONS TOTALS</b>	<b>330</b>	<b>383</b>	<b>-53</b>	<b>-13.8%</b>	<b>322</b>	<b>8</b>	<b>2.5%</b>	<b>2,325</b>	<b>2,449</b>	<b>-124</b>	<b>-5.1%</b>	<b>2,166</b>	<b>159</b>	<b>7.3%</b>		
<b>AIRPORT TOTALS</b>	<b>487</b>	<b>555</b>	<b>-68</b>	<b>-12.3%</b>	<b>486</b>	<b>1</b>	<b>0.2%</b>	<b>2,975</b>	<b>3,187</b>	<b>-212</b>	<b>-6.7%</b>	<b>2,883</b>	<b>92</b>	<b>3.2%</b>		

Notes: Due to the COVID-19 pandemic that has impacted traffic since 1Q2020, 2019 data is noted here for baseline comparisons

# RICKENBACKER INTERNATIONAL AIRPORT

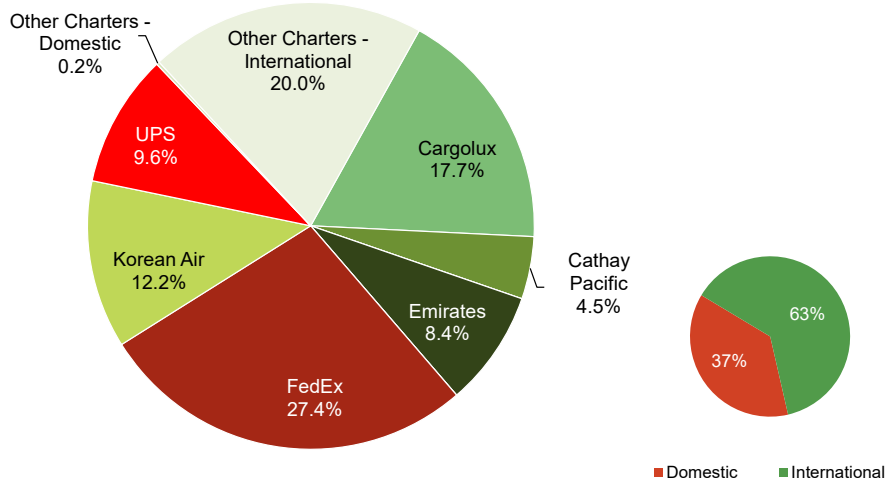
July 2022

## Monthly Cargo by Weights



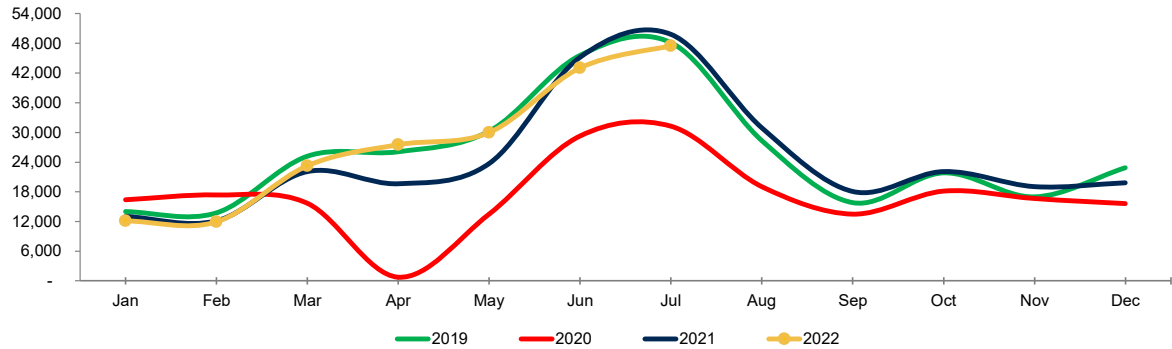
Note: Figures may not add up to 100% due to rounding

## Year to Date Cargo by Weights



Note: Figures may not add up to 100% due to rounding

## Total Passengers



Year	Jan	Feb	Mar	Apr	May	Jun	Jul	Aug	Sep	Oct	Nov	Dec	Total	Growth
2019	13,969	13,763	25,190	26,115	30,201	45,570	48,160	28,369	15,796	21,818	16,981	22,848	308,780	0.5%
2020	16,408	17,366	15,678	739	13,491	29,284	31,242	19,071	13,498	18,123	16,623	15,637	207,160	-32.9%
2021	13,016	12,126	22,110	19,655	23,696	45,199	49,810	30,952	18,048	22,114	19,029	19,829	295,584	42.7%
2022	12,115	11,934	23,272	27,520	29,943	43,038	47,481						195,303	
22 vs. 21	-6.9%	-1.6%	5.3%	40.0%	26.4%	-4.8%	-4.7%							YE Peak Month
22 vs. 19	-13.3%	-13.3%	-7.6%	5.4%	-0.9%	-5.6%	-1.4%							YE Lowest Month

# COMBINED AIRPORTS TRAFFIC REPORT

July 2022

8/23/2022

PASSENGERS	Total Passengers - Monthly							Total Passengers - Year to Date						
	Compared to 2021 (YOY)				Compared to 2019			Compared to 2021 (YOY)				Compared to 2019		
	Jul 2022	Jul 2021	Actual Change	Percent Change	Jul 2019	Actual Change	Percent Change	YTD 2022	YTD 2021	Actual Change	Percent Change	YTD 2019	Actual Change	Percent Change
Airports														
John Glenn International	679,423	635,429	43,994	6.9%	783,122	-103,699	-13.2%	4,252,162	2,936,409	1,315,753	44.8%	4,989,391	-737,229	-14.8%
Rickenbacker International	47,481	49,810	-2,329	-4.7%	48,160	-679	-1.4%	195,303	185,612	9,691	5.2%	202,968	-7,665	-3.8%
AIRPORT TOTALS	726,904	685,239	41,665	6.1%	831,282	-104,378	-12.6%	4,447,465	3,122,021	1,325,444	42.5%	5,192,359	-744,894	-14.3%
CARGO	Total Cargo (Freight and Mail) - Monthly							Total Cargo (Freight and Mail) - Year-To-Date						
	Compared to 2021 (YOY)				Compared to 2019			Compared to 2021 (YOY)				Compared to 2019		
	Jul 2022	Jul 2021	Actual Change	Percent Change	Jul 2019	Actual Change	Percent Change	YTD 2022	YTD 2021	Actual Change	Percent Change	YTD 2019	Actual Change	Percent Change
Airports														
John Glenn International	650,322	802,864	-152,542	-19.0%	831,397	-181,075	-21.8%	5,342,574	4,831,094	511,480	10.6%	5,804,176	-461,602	-8.0%
Rickenbacker International	18,783,635	32,172,769	-13,389,134	-41.6%	22,834,341	-4,050,706	-17.7%	152,322,474	192,157,047	-39,834,573	-20.7%	160,384,479	-8,062,005	-5.0%
AIRPORT TOTALS	19,433,957	32,975,633	-13,541,676	-41.1%	23,665,738	-4,231,781	-17.9%	157,665,048	196,988,141	-39,323,093	-20.0%	166,188,655	-8,523,607	-5.1%
AIRCRAFT OPERATIONS	Actual Landing Operations - Monthly							Actual Landing Operations - Year to Date						
	Compared to 2021 (YOY)				Compared to 2019			Compared to 2021 (YOY)				Compared to 2019		
	Jul 2022	Jul 2021	Actual Change	Percent Change	Jul 2019	Actual Change	Percent Change	YTD 2022	YTD 2021	Actual Change	Percent Change	YTD 2019	Actual Change	Percent Change
Airports														
John Glenn International	3,459	3,188	271	8.5%	4,488	-1,029	-22.9%	23,619	17,017	6,602	38.8%	29,581	-5,962	-20.2%
Rickenbacker International	487	555	-68	-12.3%	486	1	0.2%	2,975	3,187	-212	-6.7%	2,883	92	3.2%
AIRPORT TOTALS	3,946	3,743	203	5.4%	4,974	-1,028	-20.7%	26,594	20,204	6,390	31.6%	32,464	-5,870	-18.1%

Notes: Due to the COVID-19 pandemic that has impacted traffic since 1Q2020, 2019 data is noted here for baseline comparisons

Operating Airline	Brand Airline	Terminal / Non-Terminal	Concourse	Sig / Non-Sig	Scheduled / Charter / Freight	Pax - Enplane	Pax - Deplane	Mail - Enplane	Mail - Deplane	Freight - Enplane	Freight - Deplane	Landings	Landed Weight
<b>TERMINAL PASSENGER FLIGHT ACTIVITY: Scheduled and charter flights operating from the CMH terminal</b>													
<b>Terminal - Scheduled Passenger Flight Activity</b>													
Air Canada Express - Jazz	Air Canada	Terminal	Concourse B	Signatory	Scheduled	2,692	2,873	-	-	-	-	72	3,412,100
Alaska Airlines	Alaska	Terminal	Concourse C	Signatory	Scheduled	5,316	5,328	3,414	6,823	31,324	3,315	32	5,071,500
American Airlines	American	Terminal	Concourse B	Signatory	Scheduled	40,420	41,113	3,730	8,500	8,309	5,671	287	43,103,694
American - Envoy Air	American	Terminal	Concourse B	Signatory	Scheduled	12,769	13,047	-	-	1,190	103	196	14,674,360
American - PSA	American	Terminal	Concourse B	Signatory	Scheduled	9,607	10,161	-	-	22	26	152	11,131,700
American - Republic	American	Terminal	Concourse B	Signatory	Scheduled	18,195	20,142	-	-	4,384	920	335	25,095,050
American - Skywest	American	Terminal	Concourse B	Signatory	Scheduled	314	282	-	-	-	26	5	335,000
Breeze Airways	Breeze	Terminal	Concourse C	Signatory	Scheduled	3,072	3,224	-	-	-	-	41	4,081,159
Delta Air Lines	Delta	Terminal	Concourse C	Signatory	Scheduled	26,488	26,428	17,825	4,469	8,777	16,998	168	25,230,490
Delta Connection - Endeavor	Delta	Terminal	Concourse C	Signatory	Scheduled	1,554	1,578	-	-	-	-	31	1,738,000
Delta Connection - Republic	Delta	Terminal	Concourse C	Signatory	Scheduled	18,338	19,474	-	-	-	-	323	23,914,759
Delta Connection - Skywest	Delta	Terminal	Concourse C	Signatory	Scheduled	11,701	12,131	-	-	-	-	179	13,206,214
Frontier Airlines	Frontier	Terminal	Concourse C	Signatory	Scheduled	5,187	4,918	-	-	-	-	30	4,685,711
Southwest Airlines	Southwest	Terminal	Concourse A	Signatory	Scheduled	120,609	121,127	-	-	324,873	160,130	908	123,316,800
Spirit Airlines	Spirit	Terminal	Concourse B	Signatory	Scheduled	16,485	17,114	-	-	-	-	111	15,977,863
United Airlines	United	Terminal	Concourse B	Signatory	Scheduled	16,453	16,508	26,118	4,683	859	7,833	125	17,802,200
United Express - Air Wisconsin	United	Terminal	Concourse B	Signatory	Scheduled	-	-	-	-	-	-	-	-
United Express - CommutAir	United	Terminal	Concourse B	Signatory	Scheduled	2,695	2,813	-	-	-	-	62	2,728,000
United Express - GoJet	United	Terminal	Concourse B	Signatory	Scheduled	-	-	-	-	-	-	-	-
United Express - Mesa	United	Terminal	Concourse B	Signatory	Scheduled	4,637	4,789	-	-	-	-	71	5,325,000
United Express - Republic	United	Terminal	Concourse B	Signatory	Scheduled	11,636	11,657	-	-	-	-	169	12,548,708
United Express - Skywest	United	Terminal	Concourse B	Signatory	Scheduled	6,615	6,981	-	-	-	-	101	7,570,657
<b>Terminal - Charter Passenger Flight Activity</b>													
Sun Country	Sun Country	Terminal	Concourse C	Non-Signatory	Charter	323	322	-	-	-	-	4	585,200
VivaAerobus	VivaAerobus	Terminal	Concourse C	Non-Signatory	Charter	883	871	-	-	-	-	5	710,000
<b>NON-TERMINAL FLIGHT ACTIVITY: Flights operating at a location other than the CMH terminal</b>													
<b>Non-Terminal - Charter Passenger Flight Activity</b>													
Kalitta	Kalitta	Non-Terminal	Non-Terminal	Non-Signatory	Charter	2	1	-	-	-	-	5	81,100
National Airlines	National Airlines	Non-Terminal	Non-Terminal	Non-Signatory	Charter	63	-	-	-	-	-	1	198,000
Royal Air Freight	Royal Air Freight	Non-Terminal	Non-Terminal	Non-Signatory	Charter	6	5	-	-	-	-	2	36,000
Sun Country	Sun Country	Non-Terminal	Non-Terminal	Non-Signatory	Charter	188	194	-	-	-	-	8	1,153,300
Ultimate Jet Charters	Ultimate Jet Charters	Non-Terminal	Non-Terminal	Non-Signatory	Charter	47	47	-	-	-	-	3	106,549
<b>Non-Terminal - Diversion / Ferry Flight Activity</b>													
American - Envoy Air	American	Non-Terminal	Non-Terminal	Signatory	Diversion / Ferry	-	-	-	-	-	-	1	74,950
American - Republic	American	Non-Terminal	Non-Terminal	Signatory	Diversion / Ferry	-	-	-	-	-	-	19	1,413,490
Delta Connection - Republic	Delta	Non-Terminal	Non-Terminal	Signatory	Diversion / Ferry	-	-	-	-	-	-	10	744,278
Delta Connection - Skywest	Delta	Non-Terminal	Non-Terminal	Signatory	Diversion / Ferry	-	-	-	-	-	-	1	75,100
Southwest Airlines	Southwest	Non-Terminal	Non-Terminal	Signatory	Diversion / Ferry	-	-	-	-	-	-	1	128,000
<b>Non-Terminal - Freight Flight Activity</b>													
Castle Aviation	Castle Aviation	Non-Terminal	Non-Terminal	Non-Signatory	Freight	-	-	-	-	-	-	1	5,800
<b>SUBTOTAL: Terminal Passenger Flight Activity</b>						<b>335,989</b>	<b>342,881</b>	<b>51,087</b>	<b>24,475</b>	<b>379,738</b>	<b>195,022</b>	<b>3,407</b>	<b>362,243,965</b>
<b>SUBTOTAL: Non-Terminal Flight Activity</b>						<b>306</b>	<b>247</b>	<b>-</b>	<b>-</b>	<b>-</b>	<b>-</b>	<b>52</b>	<b>4,016,567</b>
<b>MONTHLY GRAND TOTAL: Terminal &amp; Non-Terminal Activity</b>						<b>336,295</b>	<b>343,128</b>	<b>51,087</b>	<b>24,475</b>	<b>379,738</b>	<b>195,022</b>	<b>3,459</b>	<b>366,260,532</b>
						<b>679,423</b>		<b>75,562</b>		<b>574,760</b>			