

# *Monthly Statistics Report*

Report compiled from self-reported airline statistics

---

August 2022



**COLUMBUS**  
REGIONAL AIRPORT AUTHORITY

# JOHN GLENN COLUMBUS INTERNATIONAL AIRPORT

August 2022

9/27/2022

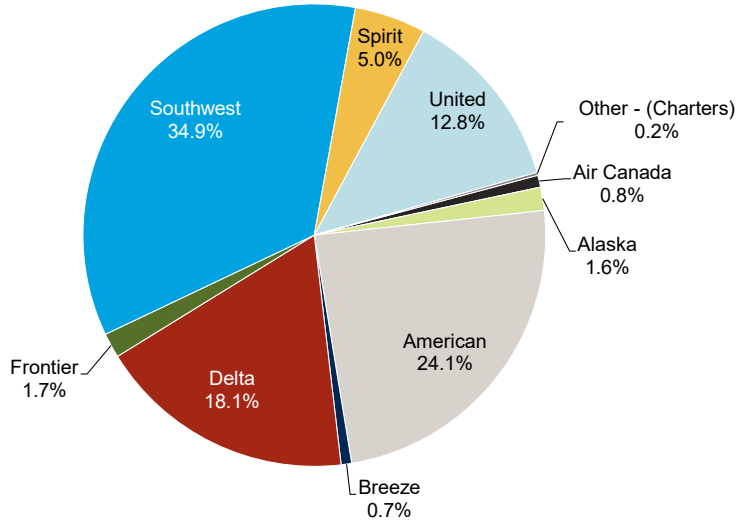
PASSENGERS	Total Passengers - Monthly								Total Passengers - Year to Date							
	Totals		Compared to 2021 (YOY)			Compared to 2019			Totals		Compared to 2021 (YOY)			Compared to 2019		
	Aug 2022	Aug 2021	Actual Change	Percent Change	Aug 2019	Actual Change	Percent Change	YTD 2022	YTD 2021	Actual Change	Percent Change	YTD 2019	Actual Change	Percent Change		
Airline																
Air Canada Express	5,382	2,378	3,004	126.3%	6,881	-1,499	-21.8%	27,000	4,085	22,915	561.0%	49,873	-22,873	-45.9%		
Alaska	10,267	9,708	559	5.8%	8,321	1,946	23.4%	64,348	53,280	11,068	20.8%	48,081	16,267	33.8%		
American	153,046	133,767	19,279	14.4%	178,793	-25,747	-14.4%	1,185,305	808,002	377,303	46.7%	1,364,292	-178,987	-13.1%		
Breeze	4,636	4,208	428	10.2%	-	4,636	-	44,443	6,692	37,751	564.1%	-	44,443	-		
Delta	114,642	118,368	-3,726	-3.1%	169,765	-55,123	-32.5%	865,883	632,917	232,966	36.8%	1,219,149	-353,266	-29.0%		
Frontier	10,926	7,271	3,655	50.3%	11,314	-388	-3.4%	67,938	48,456	19,482	40.2%	79,074	-11,136	-14.1%		
Southwest	221,613	186,093	35,520	19.1%	227,487	-5,874	-2.6%	1,663,760	1,207,030	456,730	37.8%	1,891,271	-227,511	-12.0%		
Spirit	31,658	33,535	-1,877	-5.6%	33,135	-1,477	-4.5%	361,128	360,056	1,072	0.3%	308,445	52,683	17.1%		
United	81,156	61,495	19,661	32.0%	100,227	-19,071	-19.0%	586,926	359,787	227,139	63.1%	737,649	-150,723	-20.4%		
AIRLINES TOTALS	633,326	556,823	76,503	13.7%	735,923	-102,597	-13.9%	4,866,731	3,480,305	1,386,426	39.8%	5,697,834	-831,103	-14.6%		
CHARTER TOTALS	1,250	1,939	-689	-35.5%	1,517	-267	-17.6%	20,007	14,866	5,141	34.6%	28,997	-8,990	-31.0%		
<b>AIRPORT TOTALS</b>	<b>634,576</b>	<b>558,762</b>	<b>75,814</b>	<b>13.6%</b>	<b>737,440</b>	<b>-102,864</b>	<b>-13.9%</b>	<b>4,886,738</b>	<b>3,495,171</b>	<b>1,391,567</b>	<b>39.8%</b>	<b>5,726,831</b>	<b>-840,093</b>	<b>-14.7%</b>		
CARGO	Total Cargo (Freight and Mail) - Monthly								Total Cargo (Freight and Mail) - Year-To-Date							
	Totals		Compared to 2021 (YOY)			Compared to 2019			Totals		Compared to 2021 (YOY)			Compared to 2019		
	Aug 2022	Aug 2021	Actual Change	Percent Change	Aug 2019	Actual Change	Percent Change	YTD 2022	YTD 2021	Actual Change	Percent Change	YTD 2019	Actual Change	Percent Change		
Airline																
Alaska	25,823	42,935	-17,112	-39.9%	35,047	-9,224	-26.3%	280,008	257,712	22,296	8.7%	173,379	106,629	61.5%		
American	32,666	85,862	-53,196	-62.0%	145,812	-113,146	-77.6%	564,547	842,955	-278,408	-33.0%	1,189,222	-624,675	-52.5%		
Delta	52,209	82,465	-30,256	-36.7%	189,574	-137,365	-72.5%	645,973	699,317	-53,344	-7.6%	1,356,604	-710,631	-52.4%		
Southwest	482,884	580,082	-97,198	-16.8%	424,511	58,373	13.8%	3,933,190	3,636,146	297,044	8.2%	3,157,189	776,001	24.6%		
United	33,103	7,525	25,578	339.9%	101,862	-68,759	-67.5%	340,841	106,204	234,637	220.9%	786,206	-445,365	-56.6%		
AIRLINES TOTALS	626,685	798,869	-172,184	-21.6%	896,806	-270,121	-30.1%	5,764,559	5,542,334	222,225	4.0%	6,662,600	-898,041	-13.5%		
CARGO AIRLINES TOTALS	5,205	16,677	-11,472	-68.8%	3,741	1,464	39.1%	209,905	104,306	105,599	101.2%	42,123	167,782	398.3%		
<b>AIRPORT TOTALS</b>	<b>631,890</b>	<b>815,546</b>	<b>-183,656</b>	<b>-22.5%</b>	<b>900,547</b>	<b>-268,657</b>	<b>-29.8%</b>	<b>5,974,464</b>	<b>5,646,640</b>	<b>327,824</b>	<b>5.8%</b>	<b>6,704,723</b>	<b>-730,259</b>	<b>-10.9%</b>		
AIRCRAFT OPERATIONS	Actual Landing Operations - Monthly								Actual Landing Operations - Year to Date							
	Totals		Compared to 2021 (YOY)			Compared to 2019			Totals		Compared to 2021 (YOY)			Compared to 2019		
	Aug 2022	Aug 2021	Actual Change	Percent Change	Aug 2019	Actual Change	Percent Change	YTD 2022	YTD 2021	Actual Change	Percent Change	YTD 2019	Actual Change	Percent Change		
Airline																
Air Canada Express	78	30	48	160.0%	114	-36	-31.6%	396	61	335	549.2%	826	-430	-52.1%		
Alaska	32	31	1	3.2%	32	-	0.0%	205	203	2	1.0%	180	25	13.9%		
American	944	871	73	8.4%	1,372	-428	-31.2%	7,872	5,541	2,331	42.1%	10,313	-2,441	-23.7%		
Breeze	30	47	-17	-36.2%	-	30	-	329	73	256	350.7%	-	329	-		
Delta	695	615	80	13.0%	991	-296	-29.9%	5,423	4,162	1,261	30.3%	7,270	-1,847	-25.4%		
Frontier	34	23	11	47.8%	38	-4	-10.5%	234	158	76	48.1%	259	-25	-9.7%		
Southwest	895	782	113	14.5%	1,030	-135	-13.1%	6,566	4,971	1,595	32.1%	8,073	-1,507	-18.7%		
Spirit	109	160	-51	-31.9%	123	-14	-11.4%	1,272	1,282	-10	-0.8%	1,064	208	19.5%		
United	510	508	2	0.4%	734	-224	-30.5%	3,968	3,147	821	26.1%	5,392	-1,424	-26.4%		
AIRLINES TOTALS	3,327	3,067	260	8.5%	4,434	-1,107	-25.0%	26,265	19,598	6,667	34.0%	33,377	-7,112	-21.3%		
CHARTER TOTALS	79	64	15	23.4%	56	23	41.1%	645	454	191	42.1%	661	-16	-2.4%		
CARGO AIRLINES TOTALS	10	7	3	42.9%	2	8	400.0%	125	103	22	21.4%	35	90	257.1%		
<b>AIRPORT TOTALS</b>	<b>3,416</b>	<b>3,138</b>	<b>278</b>	<b>8.9%</b>	<b>4,492</b>	<b>-1,076</b>	<b>-24.0%</b>	<b>27,035</b>	<b>20,155</b>	<b>6,880</b>	<b>34.1%</b>	<b>34,073</b>	<b>-7,038</b>	<b>-20.7%</b>		

Notes:  
 Due to the COVID-19 pandemic that has impacted traffic since 10/2020, 2019 data is noted here for baseline comparisons  
 Air Canada Express service reinstated July 1, 2021  
 Breeze Airways service began July 3, 2021

# JOHN GLENN COLUMBUS INTERNATIONAL AIRPORT

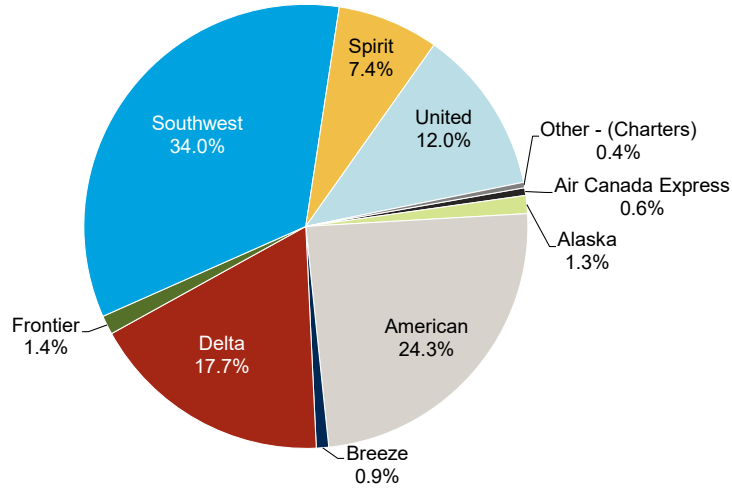
August 2022

## Monthly by Passengers



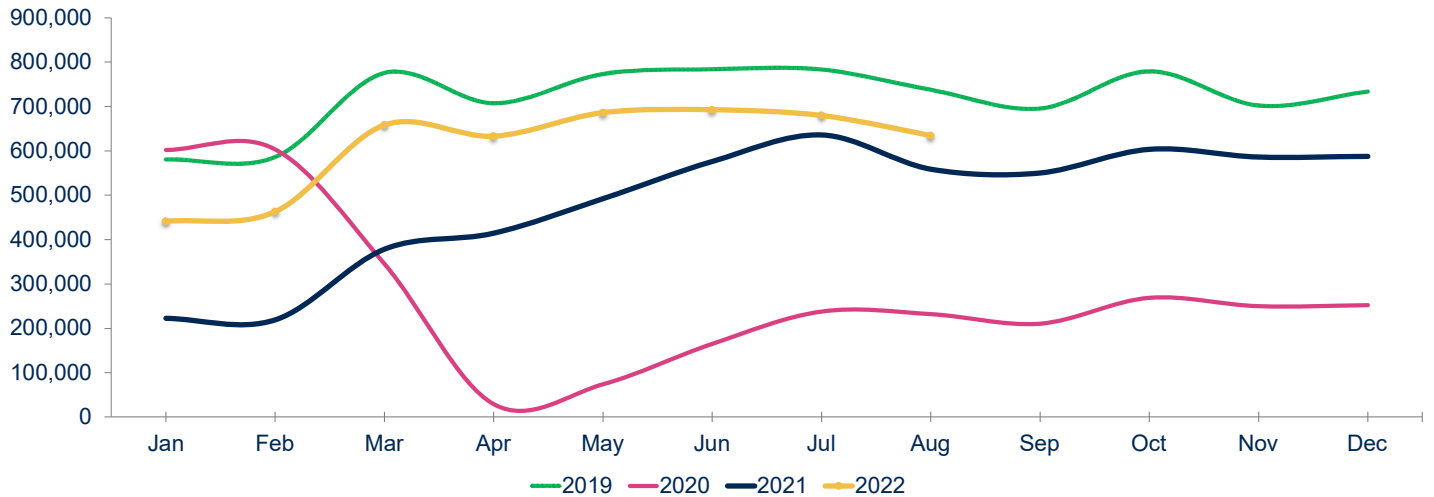
Notes:  
Figures may not add up to 100% due to rounding

## Year to Date by Passengers



Notes:  
Figures may not add up to 100% due to rounding

## Total Passengers



Year	Jan	Feb	Mar	Apr	May	Jun	Jul	Aug	Sep	Oct	Nov	Dec	Total	Growth
2019	580,704	586,025	775,533	707,185	772,991	783,831	783,122	737,440	695,409	779,088	702,070	733,710	8,637,108	6.1%
2020	602,022	603,467	345,418	28,943	73,769	164,700	237,756	232,096	210,233	268,914	249,522	252,287	3,269,127	-62.2%
2021	222,576	218,588	378,159	413,942	492,089	575,626	635,429	558,762	550,019	603,585	585,811	587,736	5,822,322	78.1%
2022	440,753	462,587	658,147	633,049	685,860	692,343	679,423	634,576					4,886,738	

22 vs. 21	98.0%	111.6%	74.0%	52.9%	39.4%	20.3%	6.9%	13.6%						YE Peak Month
22 vs. 19	-24.1%	-21.1%	-15.1%	-10.5%	-11.3%	-11.7%	-13.2%	-13.9%						YE Lowest Month

# RICKENBACKER INTERNATIONAL AIRPORT

## August 2022

9/27/2022

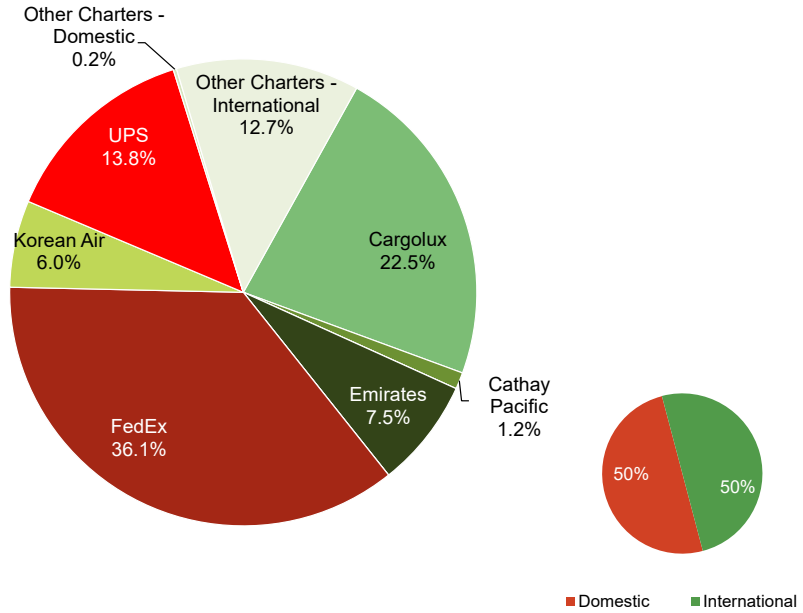
PASSENGERS	Total Passengers - Monthly							Total Passengers - Year to Date						
	Totals		Compared to 2021 (YOY)		Compared to 2019			Totals		Compared to 2021 (YOY)		Compared to 2019		
	Aug 2022	Aug 2021	Actual Change	Percent Change	Aug 2019	Actual Change	Percent Change	YTD 2022	YTD 2021	Actual Change	Percent Change	YTD 2019	Actual Change	Percent Change
Airline														
Allegiant Air	28,193	30,952	-2,759	-8.9%	28,369	-176	-0.6%	223,067	215,603	7,464	3.5%	228,489	-5,422	-2.4%
Miami Air	-	-	-	-	-	-	-	-	-	-	-	775	-775	-100.0%
Sun Country	-	-	-	-	-	-	-	355	122	233	191.0%	151	204	135.1%
Other Charters	-	-	-	-	-	-	-	74	839	-765	-91.2%	1,922	-1,848	-96.1%
<b>AIRPORT TOTALS</b>	<b>28,193</b>	<b>30,952</b>	<b>-2,759</b>	<b>-8.9%</b>	<b>28,369</b>	<b>-176</b>	<b>-0.6%</b>	<b>223,496</b>	<b>216,564</b>	<b>6,932</b>	<b>3.2%</b>	<b>231,337</b>	<b>-7,841</b>	<b>-3.4%</b>
CARGO	Total Cargo (Freight and Mail) - Monthly							Total Cargo (Freight and Mail) - Year-To-Date						
	Totals		Compared to 2021 (YOY)		Compared to 2019			Totals		Compared to 2021 (YOY)		Compared to 2019		
	Aug 2022	Aug 2021	Actual Change	Percent Change	Aug 2019	Actual Change	Percent Change	YTD 2022	YTD 2021	Actual Change	Percent Change	YTD 2019	Actual Change	Percent Change
Airline														
AirBridgeCargo	-	-	-	-	1,267,841	-1,267,841	-100.0%	-	-	-	-	12,081,513	-12,081,513	-100.0%
Asiana	-	-	-	-	524,204	-524,204	-100.0%	-	-	-	-	524,204	-524,204	-100.0%
Cargolux	3,611,431	4,690,504	-1,079,073	-23.0%	3,537,767	73,664	2.1%	30,606,561	35,805,945	-5,199,384	-14.5%	27,072,760	3,533,801	13.1%
Cathay Pacific	186,054	1,973,871	-1,787,817	-90.6%	2,652,210	-2,466,156	-93.0%	7,078,137	6,969,559	108,578	1.6%	15,728,292	-8,650,155	-55.0%
China Airlines	-	-	-	-	1,366,306	-1,366,306	-100.0%	-	-	-	-	10,282,246	-10,282,246	-100.0%
Emirates	1,208,796	4,234,858	-3,026,062	-71.5%	3,159,260	-1,950,464	-61.7%	13,974,921	31,743,326	-17,768,405	-56.0%	20,447,299	-6,472,378	-31.7%
Etiihad	-	-	-	-	124,235	-124,235	-100.0%	-	662,381	-662,381	-100.0%	12,826,388	-12,826,388	-100.0%
FedEx	5,779,135	7,049,601	-1,270,466	-18.0%	7,127,394	-1,348,259	-18.9%	47,496,296	53,169,914	-5,673,618	-10.7%	56,476,951	-8,980,655	-15.9%
Korean Air	962,627	4,867,836	-3,905,209	-80.2%	-	962,627	-	19,501,281	29,320,776	-9,819,495	-33.5%	-	19,501,281	-
UPS	2,207,736	2,307,800	-100,064	-4.3%	2,518,222	-310,486	-12.3%	16,887,134	17,922,052	-1,034,918	-5.8%	17,912,898	-1,025,764	-5.7%
Other Cargo Charters - Domestic	36,831	34,455	2,376	6.9%	873,035	-836,204	-95.8%	366,931	204,385	162,546	79.5%	2,813,154	-2,446,223	-87.0%
Other Cargo Charters - International	2,030,835	6,226,365	-4,195,530	-67.4%	862,564	1,168,271	135.4%	32,434,658	47,743,999	-15,309,341	-32.1%	8,231,813	24,202,845	294.0%
<b>AIRPORT TOTALS</b>	<b>16,023,445</b>	<b>31,385,290</b>	<b>-15,361,845</b>	<b>-48.9%</b>	<b>24,013,038</b>	<b>-7,989,593</b>	<b>-33.3%</b>	<b>168,345,919</b>	<b>223,542,337</b>	<b>-55,196,418</b>	<b>-24.7%</b>	<b>184,397,517</b>	<b>-16,051,598</b>	<b>-8.7%</b>
TOTAL DOMESTIC	8,023,702	9,391,856	-1,368,154	-14.6%	10,518,651	-2,494,949	-23.7%	64,750,361	71,296,351	-6,545,990	-9.2%	77,203,003	-12,452,642	-16.1%
TOTAL INTERNATIONAL	7,999,743	21,993,434	-13,993,691	-63.6%	13,494,387	-5,494,644	-40.7%	103,595,558	152,245,986	-48,650,428	-32.0%	107,194,514	-3,598,956	-3.4%
<b>AIRPORT TOTALS</b>	<b>16,023,445</b>	<b>31,385,290</b>	<b>-15,361,845</b>	<b>-48.9%</b>	<b>24,013,038</b>	<b>-7,989,593</b>	<b>-33.3%</b>	<b>168,345,919</b>	<b>223,542,337</b>	<b>-55,196,418</b>	<b>-24.7%</b>	<b>184,397,517</b>	<b>-16,051,598</b>	<b>-8.7%</b>
AIRCRAFT OPERATIONS	Actual Landing Operations - Monthly							Actual Landing Operations - Year to Date						
	Totals		Compared to 2021 (YOY)		Compared to 2019			Totals		Compared to 2021 (YOY)		Compared to 2019		
	Aug 2022	Aug 2021	Actual Change	Percent Change	Aug 2019	Actual Change	Percent Change	YTD 2022	YTD 2021	Actual Change	Percent Change	YTD 2019	Actual Change	Percent Change
Airline														
Allegiant Air	96	117	-21	-17.9%	99	-3	-3.0%	743	845	-102	-12.1%	783	-40	-5.1%
Miami Air	-	-	-	-	-	-	-	-	-	-	-	6	-6	-100.0%
Sun Country	-	-	-	-	-	-	-	2	2	-	0.0%	1	1	100.0%
Other Charters	-	-	-	-	-	-	-	1	8	-7	-87.5%	26	-25	-96.2%
<b>PASSENGER OPERATIONS TOTALS</b>	<b>96</b>	<b>117</b>	<b>-21</b>	<b>-17.9%</b>	<b>99</b>	<b>-3</b>	<b>-3.0%</b>	<b>746</b>	<b>855</b>	<b>-109</b>	<b>-12.7%</b>	<b>816</b>	<b>-70</b>	<b>-8.6%</b>
AirBridgeCargo	-	-	-	-	9	-9	-100.0%	-	-	-	-	52	-52	-100.0%
Asiana	-	-	-	-	2	-2	-100.0%	-	-	-	-	2	-2	-100.0%
Cargolux	14	16	-2	-12.5%	18	-4	-22.2%	112	127	-15	-11.8%	133	-21	-15.8%
Cathay Pacific	5	9	-4	-44.4%	17	-12	-70.6%	55	47	8	17.0%	128	-73	-57.0%
China Airlines	-	1	-1	-100.0%	9	-9	-100.0%	-	1	-1	-100.0%	70	-70	-100.0%
Emirates	6	40	-34	-85.0%	19	-13	-68.4%	130	268	-138	-51.5%	126	4	3.2%
Etiihad	-	-	-	-	1	-1	-100.0%	-	5	-5	-100.0%	61	-61	-100.0%
FedEx	147	140	7	5.0%	143	4	2.8%	1,032	1,051	-19	-1.8%	1,104	-72	-6.5%
Korean Air	13	52	-39	-75.0%	-	13	-	235	321	-86	-26.8%	-	235	-
UPS	26	26	-	0.0%	41	-15	-36.6%	211	211	0	0.0%	336	-125	-37.2%
Other Cargo Charters - Domestic	93	71	22	31.0%	88	5	5.7%	635	550	85	15.5%	464	171	36.9%
Other Cargo Charters - International	39	39	-	0.0%	4	35	875.0%	258	262	-4	-1.5%	41	217	529.3%
<b>CARGO OPERATIONS TOTALS</b>	<b>343</b>	<b>394</b>	<b>-51</b>	<b>-12.9%</b>	<b>351</b>	<b>-8</b>	<b>-2.3%</b>	<b>2,668</b>	<b>2,843</b>	<b>-175</b>	<b>-6.2%</b>	<b>2,517</b>	<b>151</b>	<b>6.0%</b>
<b>AIRPORT TOTALS</b>	<b>439</b>	<b>511</b>	<b>-72</b>	<b>-14.1%</b>	<b>450</b>	<b>-11</b>	<b>-2.4%</b>	<b>3,414</b>	<b>3,698</b>	<b>-284</b>	<b>-7.7%</b>	<b>3,333</b>	<b>81</b>	<b>2.4%</b>

Notes: Due to the COVID-19 pandemic that has impacted traffic since 1Q2020, 2019 data is noted here for baseline comparisons

# RICKENBACKER INTERNATIONAL AIRPORT

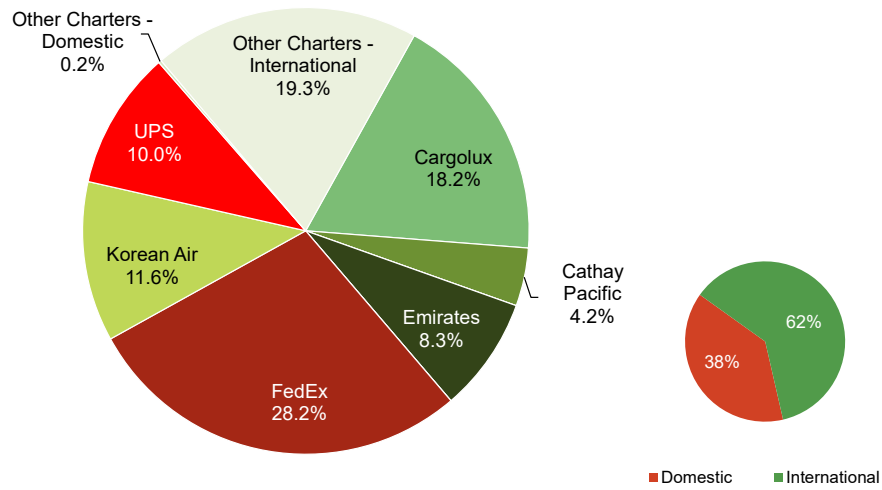
August 2022

## Monthly Cargo by Weights



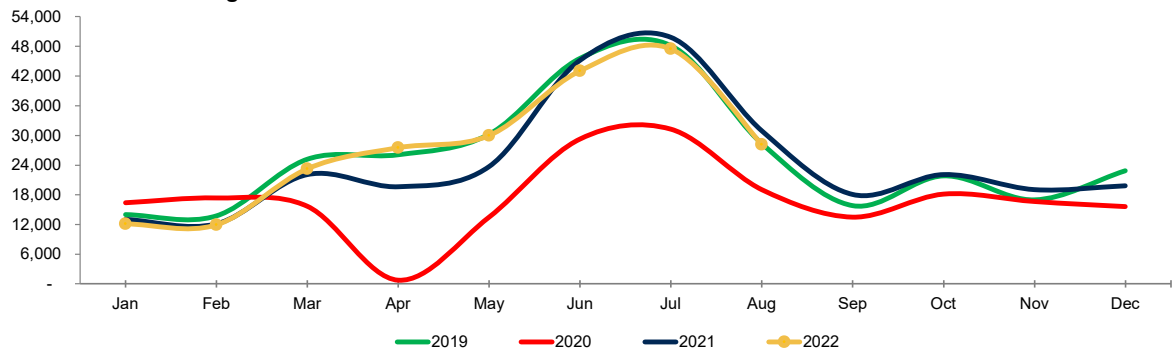
Note: Figures may not add up to 100% due to rounding

## Year to Date Cargo by Weights



Note: Figures may not add up to 100% due to rounding

## Total Passengers



Year	Jan	Feb	Mar	Apr	May	Jun	Jul	Aug	Sep	Oct	Nov	Dec	Total	Growth
2019	13,969	13,763	25,190	26,115	30,201	45,570	48,160	28,369	15,796	21,818	16,981	22,848	308,780	0.5%
2020	16,408	17,366	15,678	739	13,491	29,284	31,242	19,071	13,498	18,123	16,623	15,637	207,160	-32.9%
2021	13,016	12,126	22,110	19,655	23,696	45,199	49,810	30,952	18,048	22,114	19,029	19,829	295,584	42.7%
2022	12,115	11,934	23,272	27,520	29,943	43,038	47,481	28,193					223,496	

22 vs. 21	-6.9%	-1.6%	5.3%	40.0%	26.4%	-4.8%	-4.7%	-8.9%						YE Peak Month
22 vs. 19	-13.3%	-13.3%	-7.6%	5.4%	-0.9%	-5.6%	-1.4%	-0.6%						YE Lowest Month

# COMBINED AIRPORTS TRAFFIC REPORT

August 2022

9/27/2022

PASSENGERS	Total Passengers - Monthly							Total Passengers - Year to Date						
	Compared to 2021 (YOY)				Compared to 2019			Compared to 2021 (YOY)				Compared to 2019		
	Aug 2022	Aug 2021	Actual Change	Percent Change	Aug 2019	Actual Change	Percent Change	YTD 2022	YTD 2021	Actual Change	Percent Change	YTD 2019	Actual Change	Percent Change
Airports														
John Glenn International	634,576	558,762	75,814	13.6%	737,440	-102,864	-13.9%	4,886,738	3,495,171	1,391,567	39.8%	5,726,831	-840,093	-14.7%
Rickenbacker International	28,193	30,952	-2,759	-8.9%	28,369	-176	-0.6%	223,496	216,564	6,932	3.2%	231,337	-7,841	-3.4%
AIRPORT TOTALS	662,769	589,714	73,055	12.4%	765,809	-103,040	-13.5%	5,110,234	3,711,735	1,398,499	37.7%	5,958,168	-847,934	-14.2%
CARGO	Total Cargo (Freight and Mail) - Monthly							Total Cargo (Freight and Mail) - Year-To-Date						
	Compared to 2021 (YOY)				Compared to 2019			Compared to 2021 (YOY)				Compared to 2019		
	Aug 2022	Aug 2021	Actual Change	Percent Change	Aug 2019	Actual Change	Percent Change	YTD 2022	YTD 2021	Actual Change	Percent Change	YTD 2019	Actual Change	Percent Change
Airports														
John Glenn International	631,890	815,546	-183,656	-22.5%	900,547	-268,657	-29.8%	5,974,464	5,646,640	327,824	5.8%	6,704,723	-730,259	-10.9%
Rickenbacker International	16,023,445	31,385,290	-15,361,845	-48.9%	24,013,038	-7,989,593	-33.3%	168,345,919	223,542,337	-55,196,418	-24.7%	184,397,517	-16,051,598	-8.7%
AIRPORT TOTALS	16,655,335	32,200,836	-15,545,501	-48.3%	24,913,585	-8,258,250	-33.1%	174,320,383	229,188,977	-54,868,594	-23.9%	191,102,240	-16,781,857	-8.8%
AIRCRAFT OPERATIONS	Actual Landing Operations - Monthly							Actual Landing Operations - Year to Date						
	Compared to 2021 (YOY)				Compared to 2019			Compared to 2021 (YOY)				Compared to 2019		
	Aug 2022	Aug 2021	Actual Change	Percent Change	Aug 2019	Actual Change	Percent Change	YTD 2022	YTD 2021	Actual Change	Percent Change	YTD 2019	Actual Change	Percent Change
Airports														
John Glenn International	3,416	3,138	278	8.9%	4,492	-1,076	-24.0%	27,035	20,155	6,880	34.1%	34,073	-7,038	-20.7%
Rickenbacker International	439	511	-72	-14.1%	450	-11	-2.4%	3,414	3,698	-284	-7.7%	3,333	81	2.4%
AIRPORT TOTALS	3,855	3,649	206	5.6%	4,942	-1,087	-22.0%	30,449	23,853	6,596	27.7%	37,406	-6,957	-18.6%

Notes: Due to the COVID-19 pandemic that has impacted traffic since 1Q2020, 2019 data is noted here for baseline comparisons

**COLUMBUS REGIONAL AIRPORT AUTHORITY - JOHN GLENN COLUMBUS INTERNATIONAL AIRPORT**

**MONTHLY TRAFFIC REPORT**

August 2022

9/27/2022

Operating Airline	Brand Airline	Terminal / Non-Terminal	Concourse	Sig / Non-Sig	Scheduled / Charter / Freight	Pax - Enplane	Pax - Deplane	Mail - Enplane	Mail - Deplane	Freight - Enplane	Freight - Deplane	Landings	Landed Weight
<b>TERMINAL PASSENGER FLIGHT ACTIVITY: Scheduled and charter flights operating from the CMH terminal</b>													
<b>Terminal - Scheduled Passenger Flight Activity</b>													
Air Canada Express - Jazz	Air Canada	Terminal	Concourse B	Signatory	Scheduled	2,485	2,897	-	-	-	-	78	3,694,100
Alaska Airlines	Alaska	Terminal	Concourse C	Signatory	Scheduled	5,083	5,184	-	79	22,968	2,776	32	5,058,700
American Airlines	American	Terminal	Concourse B	Signatory	Scheduled	35,264	38,068	3,457	4,922	10,418	9,936	268	40,610,290
American - Envoy Air	American	Terminal	Concourse B	Signatory	Scheduled	12,810	13,492	-	-	290	203	201	14,991,790
American - PSA	American	Terminal	Concourse B	Signatory	Scheduled	8,297	8,880	-	-	22	698	132	9,654,000
American - Republic	American	Terminal	Concourse B	Signatory	Scheduled	16,743	19,240	-	-	2,181	539	341	25,520,990
American - Skywest	American	Terminal	Concourse B	Signatory	Scheduled	126	126	-	-	-	-	2	134,000
Breeze Airways	Breeze	Terminal	Concourse C	Signatory	Scheduled	2,239	2,397	-	-	-	-	30	3,046,756
Delta Air Lines	Delta	Terminal	Concourse C	Signatory	Scheduled	25,717	26,099	17,849	2,516	9,937	21,907	165	24,632,992
Delta Connection - Endeavor	Delta	Terminal	Concourse C	Signatory	Scheduled	3,054	3,410	-	-	-	-	65	3,885,600
Delta Connection - Republic	Delta	Terminal	Concourse C	Signatory	Scheduled	15,659	17,316	-	-	-	-	294	21,719,838
Delta Connection - Skywest	Delta	Terminal	Concourse C	Signatory	Scheduled	11,387	12,000	-	-	-	-	171	12,614,361
Frontier Airlines	Frontier	Terminal	Concourse C	Signatory	Scheduled	5,489	5,437	-	-	-	-	34	5,280,079
Southwest Airlines	Southwest	Terminal	Concourse A	Signatory	Scheduled	108,688	112,925	-	-	298,960	183,924	895	122,538,900
Spirit Airlines	Spirit	Terminal	Concourse B	Signatory	Scheduled	15,001	16,657	-	-	-	-	109	15,674,731
United Airlines	United	Terminal	Concourse B	Signatory	Scheduled	16,122	16,737	21,526	3,174	1,482	6,921	129	18,371,300
United Express - CommutAir	United	Terminal	Concourse B	Signatory	Scheduled	2,153	2,239	-	-	-	-	47	2,068,000
United Express - Mesa	United	Terminal	Concourse B	Signatory	Scheduled	4,528	4,790	-	-	-	-	68	5,100,000
United Express - Republic	United	Terminal	Concourse B	Signatory	Scheduled	10,794	10,806	-	-	-	-	174	12,807,113
United Express - Skywest	United	Terminal	Concourse B	Signatory	Scheduled	6,459	6,528	-	-	-	-	92	6,896,044
<b>Terminal - Charter Passenger Flight Activity</b>													
Sun Country	Sun Country	Terminal	Concourse C	Non-Signatory	Charter	468	327	-	-	-	-	4	585,200
VivaAerobus	VivaAerobus	Terminal	Concourse C	Non-Signatory	Charter	-	176	-	-	-	-	1	142,000
<b>NON-TERMINAL FLIGHT ACTIVITY: Flights operating at a location other than the CMH terminal</b>													
<b>Non-Terminal - Charter Passenger Flight Activity</b>													
Air Canada - Jetz	Air Canada	Non-Terminal	Non-Terminal	Signatory	Charter	23	23	-	-	-	-	1	134,481
Castle Aviation	Castle Aviation	Non-Terminal	Non-Terminal	Non-Signatory	Charter	1	-	-	-	-	-	1	5,700
Freight Runners Express	Freight Runners Express	Non-Terminal	Non-Terminal	Non-Signatory	Charter	30	-	-	-	-	-	1	48,500
Kalitta	Kalitta	Non-Terminal	Non-Terminal	Non-Signatory	Charter	4	4	-	-	-	-	5	77,900
National Airlines	National Airlines	Non-Terminal	Non-Terminal	Non-Signatory	Charter	-	63	-	-	-	-	1	198,000
Sun Country	Sun Country	Non-Terminal	Non-Terminal	Non-Signatory	Charter	36	38	-	-	-	-	7	1,007,000
Ultimate Jet Charters	Ultimate Jet Charters	Non-Terminal	Non-Terminal	Non-Signatory	Charter	-	-	-	-	-	-	1	42,549
<b>Non-Terminal - Diversion / Ferry Flight Activity</b>													
American - Envoy Air	American	Non-Terminal	Non-Terminal	Signatory	Diversion / Ferry	-	-	-	-	-	-	4	299,800
American - Republic	American	Non-Terminal	Non-Terminal	Signatory	Diversion / Ferry	-	-	-	-	-	-	27	2,013,090
Delta Connection - Republic	Delta	Non-Terminal	Non-Terminal	Signatory	Diversion / Ferry	-	-	-	-	-	-	16	1,188,728
Southwest Airlines	Southwest	Non-Terminal	Non-Terminal	Signatory	Diversion / Ferry	-	-	-	-	-	-	3	402,300
United Express - Mesa	United	Non-Terminal	Non-Terminal	Signatory	Diversion / Ferry	-	-	-	-	-	-	1	75,000
United Express - Skywest	United	Non-Terminal	Non-Terminal	Signatory	Diversion / Ferry	-	-	-	-	-	-	5	374,785
<b>Non-Terminal - Freight Flight Activity</b>													
Aeronaes	Aeronaes	Non-Terminal	Non-Terminal	Non-Signatory	Freight	-	-	-	-	-	-	3	109,500
Bahamasair	Bahamasair	Non-Terminal	Non-Terminal	Non-Signatory	Freight	-	-	-	-	-	-	2	258,400
IFL Group	IFL Group	Non-Terminal	Non-Terminal	Non-Signatory	Freight	-	-	-	-	2,705	-	3	219,468
Royal Air Freight	Royal Air Freight	Non-Terminal	Non-Terminal	Non-Signatory	Freight	-	-	1,000	-	1,500	-	2	54,640
<b>SUBTOTAL: Terminal Passenger Flight Activity</b>						<b>308,566</b>	<b>325,731</b>	<b>42,832</b>	<b>10,691</b>	<b>346,258</b>	<b>226,904</b>	<b>3,332</b>	<b>355,026,784</b>
<b>SUBTOTAL: Non-Terminal Flight Activity</b>						<b>151</b>	<b>128</b>	<b>-</b>	<b>-</b>	<b>1,000</b>	<b>4,205</b>	<b>84</b>	<b>6,655,346</b>
<b>MONTHLY GRAND TOTAL: Terminal &amp; Non-Terminal Activity</b>						<b>308,717</b>	<b>325,859</b>	<b>42,832</b>	<b>10,691</b>	<b>347,258</b>	<b>231,109</b>	<b>3,416</b>	<b>361,682,130</b>
						<b>634,576</b>		<b>53,523</b>		<b>578,367</b>			