



# MONTHLY STATISTICS REPORT

June 2022

Report compiled from self-reported airline statistics



**COLUMBUS**  
REGIONAL AIRPORT AUTHORITY

# JOHN GLENN COLUMBUS INTERNATIONAL AIRPORT

June 2022

7/26/2022

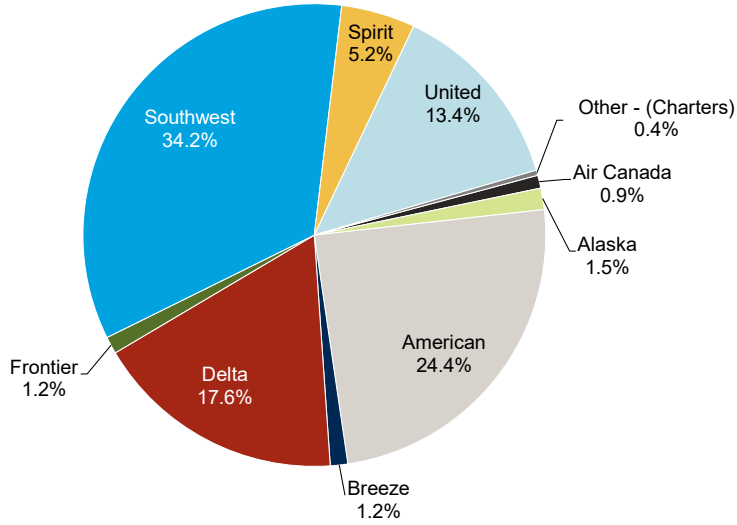
PASSENGERS	Total Passengers - Monthly								Total Passengers - Year to Date							
	Totals		Compared to 2021 (YOY)			Compared to 2019			Totals		Compared to 2021 (YOY)			Compared to 2019		
	Jun 2022	Jun 2021	Actual Change	Percent Change	Jun 2019	Actual Change	Percent Change	YTD 2022	YTD 2021	Actual Change	Percent Change	YTD 2019	Actual Change	Percent Change		
Airline																
Air Canada Express	6,304	-	6,304	-	8,223	-1,919	-23.3%	16,053	-	16,053	-	34,811	-18,758	-53.9%		
Alaska	10,316	9,954	362	3.6%	8,654	1,662	19.2%	43,437	33,283	10,154	30.5%	30,860	12,577	40.8%		
American	169,248	139,684	29,564	21.2%	190,750	-21,502	-11.3%	866,209	525,833	340,376	64.7%	998,008	-131,799	-13.2%		
Breeze	8,425	-	8,425	-	-	8,425	-	33,511	-	33,511	-	-	33,511	-		
Delta	121,832	109,375	12,457	11.4%	172,663	-50,831	-29.4%	633,549	390,283	243,266	62.3%	875,290	-241,741	-27.6%		
Frontier	8,245	6,984	1,261	18.1%	11,570	-3,325	-28.7%	46,907	34,165	12,742	37.3%	55,082	-8,175	-14.8%		
Southwest	236,876	194,458	42,418	21.8%	242,878	-6,002	-2.5%	1,200,411	812,675	387,736	47.7%	1,418,545	-218,134	-15.4%		
Spirit	35,921	58,196	-22,275	-38.3%	35,179	742	2.1%	295,871	262,569	33,302	12.7%	240,645	55,226	22.9%		
United	92,639	54,992	37,647	68.5%	109,435	-16,796	-15.3%	420,986	232,102	188,884	81.4%	528,478	-107,492	-20.3%		
AIRLINES TOTALS	689,806	573,643	116,163	20.3%	779,352	-89,546	-11.5%	3,556,934	2,290,910	1,266,024	55.3%	4,181,719	-624,785	-14.9%		
CHARTER TOTALS	2,537	1,983	554	27.9%	4,479	-1,942	-43.4%	15,805	10,070	5,735	57.0%	24,550	-8,745	-35.6%		
<b>AIRPORT TOTALS</b>	<b>692,343</b>	<b>575,626</b>	<b>116,717</b>	<b>20.3%</b>	<b>783,831</b>	<b>-91,488</b>	<b>-11.7%</b>	<b>3,572,739</b>	<b>2,300,980</b>	<b>1,271,759</b>	<b>55.3%</b>	<b>4,206,269</b>	<b>-633,530</b>	<b>-15.1%</b>		
CARGO	Total Cargo (Freight and Mail) - Monthly								Total Cargo (Freight and Mail) - Year-To-Date							
Totals		Compared to 2021 (YOY)			Compared to 2019			Totals		Compared to 2021 (YOY)			Compared to 2019			
Jun 2022	Jun 2021	Actual Change	Percent Change	Jun 2019	Actual Change	Percent Change	YTD 2022	YTD 2021	Actual Change	Percent Change	YTD 2019	Actual Change	Percent Change			
Airline																
Alaska	42,768	35,341	7,427	21.0%	43,827	-1,059	-2.4%	209,309	175,940	33,369	19.0%	110,774	98,535	89.0%		
American	42,413	92,390	-49,977	-54.1%	139,201	-96,788	-69.5%	499,000	661,815	-162,815	-24.6%	914,686	-415,686	-45.4%		
Delta	52,294	93,850	-41,556	-44.3%	144,855	-92,561	-63.9%	545,695	544,199	1,496	0.3%	949,889	-404,194	-42.6%		
Southwest	539,595	565,376	-25,781	-4.6%	361,808	177,787	49.1%	2,965,303	2,488,687	476,616	19.2%	2,367,074	598,229	25.3%		
United	37,264	9,139	28,125	307.7%	91,538	-54,274	-59.3%	268,245	70,683	197,562	279.5%	591,974	-323,729	-54.7%		
AIRLINES TOTALS	714,334	796,096	-81,762	-10.3%	781,229	-66,895	-8.6%	4,487,552	3,941,324	546,228	13.9%	4,934,397	-446,845	-9.1%		
CARGO AIRLINES TOTALS	3,308	-	3,308	-	800	2,508	313.5%	204,700	86,906	117,794	135.5%	38,382	166,318	433.3%		
<b>AIRPORT TOTALS</b>	<b>717,642</b>	<b>796,096</b>	<b>-78,454</b>	<b>-9.9%</b>	<b>782,029</b>	<b>-64,387</b>	<b>-8.2%</b>	<b>4,692,252</b>	<b>4,028,230</b>	<b>664,022</b>	<b>16.5%</b>	<b>4,972,779</b>	<b>-280,527</b>	<b>-5.6%</b>		
AIRCRAFT OPERATIONS	Actual Landing Operations - Monthly								Actual Landing Operations - Year to Date							
Totals		Compared to 2021 (YOY)			Compared to 2019			Totals		Compared to 2021 (YOY)			Compared to 2019			
Jun 2022	Jun 2021	Actual Change	Percent Change	Jun 2019	Actual Change	Percent Change	YTD 2022	YTD 2021	Actual Change	Percent Change	YTD 2019	Actual Change	Percent Change			
Airline																
Air Canada Express	77	-	77	-	110	-33	-30.0%	246	-	246	-	598	-352	-58.9%		
Alaska	30	30	0	0.0%	30	-	0.0%	141	141	0	0.0%	117	24	20.5%		
American	949	835	114	13.7%	1,345	-396	-29.4%	5,953	3,811	2,142	56.2%	7,585	-1,632	-21.5%		
Breeze	58	-	58	-	-	58	-	258	-	258	-	-	258	-		
Delta	690	591	99	16.8%	954	-264	-27.7%	4,027	2,932	1,095	37.3%	5,324	-1,297	-24.4%		
Frontier	23	21	2	9.5%	36	-13	-36.1%	170	115	55	47.8%	182	-12	-6.6%		
Southwest	858	755	103	13.6%	1,003	-145	-14.5%	4,763	3,406	1,357	39.8%	5,990	-1,227	-20.5%		
Spirit	113	199	-86	-43.2%	120	-7	-5.8%	1,052	903	149	16.5%	818	234	28.6%		
United	540	448	92	20.5%	719	-179	-24.9%	2,930	2,116	814	38.5%	3,925	-995	-25.4%		
AIRLINES TOTALS	3,338	2,879	459	15.9%	4,317	-979	-22.7%	19,540	13,424	6,116	45.6%	24,539	-4,999	-20.4%		
CHARTER TOTALS	88	51	37	72.5%	62	26	41.9%	506	314	192	61.1%	522	-16	-3.1%		
CARGO AIRLINES TOTALS	6	2	4	200.0%	1	5	500.0%	114	91	23	25.3%	32	82	256.3%		
<b>AIRPORT TOTALS</b>	<b>3,432</b>	<b>2,932</b>	<b>500</b>	<b>17.1%</b>	<b>4,380</b>	<b>-948</b>	<b>-21.6%</b>	<b>20,160</b>	<b>13,829</b>	<b>6,331</b>	<b>45.8%</b>	<b>25,093</b>	<b>-4,933</b>	<b>-19.7%</b>		

Notes:  
 Due to the COVID-19 pandemic that has impacted traffic since 1Q2020, 2019 data is noted here for baseline comparisons  
 Air Canada Express service reinstated July 1, 2021  
 Breeze Airways service began July 3, 2021

# JOHN GLENN COLUMBUS INTERNATIONAL AIRPORT

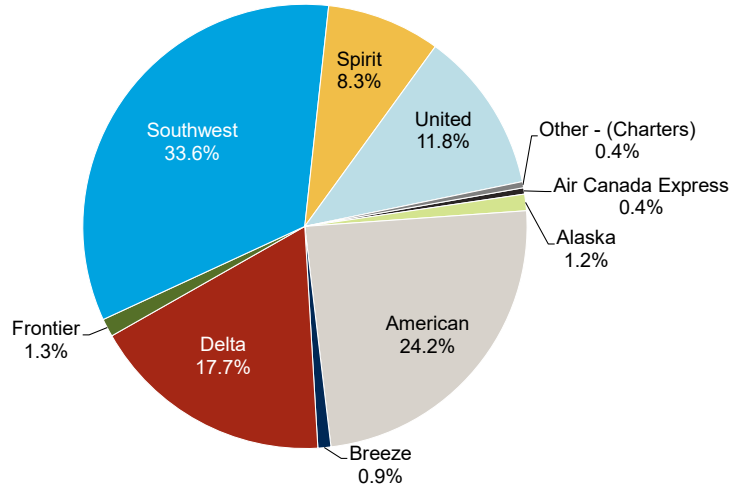
June 2022

## Monthly by Passengers



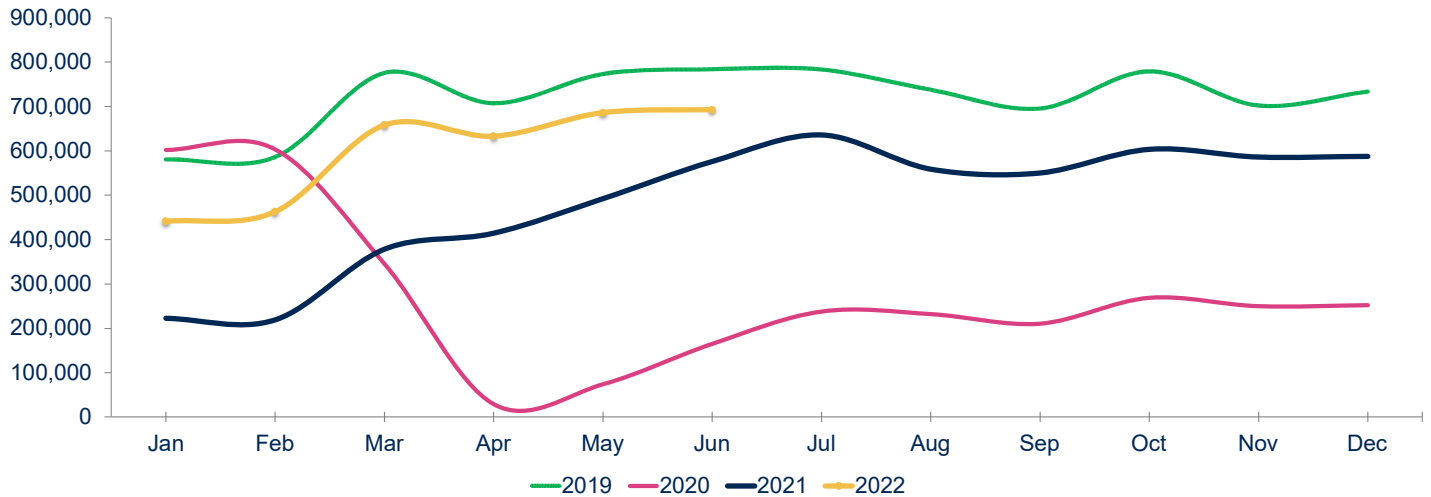
Notes:  
Figures may not add up to 100% due to rounding

## Year to Date by Passengers



Notes:  
Figures may not add up to 100% due to rounding

## Total Passengers



Year	Jan	Feb	Mar	Apr	May	Jun	Jul	Aug	Sep	Oct	Nov	Dec	Total	Growth
2019	580,704	586,025	775,533	707,185	772,991	783,831	783,122	737,440	695,409	779,088	702,070	733,710	8,637,108	6.1%
2020	602,022	603,467	345,418	28,943	73,769	164,700	237,756	232,096	210,233	268,914	249,522	252,287	3,269,127	-62.2%
2021	222,576	218,588	378,159	413,942	492,089	575,626	635,429	558,762	550,019	603,585	585,811	587,736	5,822,322	78.1%
2022	440,753	462,587	658,147	633,049	685,860	692,343							3,572,739	

22 vs. 21: 98.0% (Jan), 111.6% (Feb), 74.0% (Mar), 52.9% (Apr), 39.4% (May), 20.3% (Jun)  
 22 vs. 19: -24.1% (Jan), -21.1% (Feb), -15.1% (Mar), -10.5% (Apr), -11.3% (May), -11.7% (Jun)

YE Peak Month: Oct  
 YE Lowest Month: Apr

# RICKENBACKER INTERNATIONAL AIRPORT

June 2022

7/26/2022

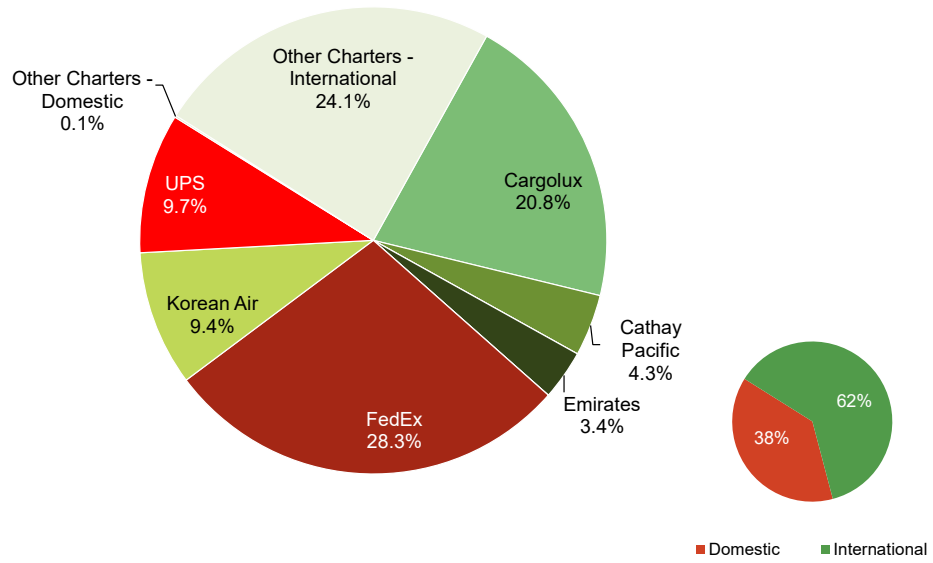
PASSENGERS	Total Passengers - Monthly							Total Passengers - Year to Date						
	Totals		Compared to 2021 (YOY)		Compared to 2019			Totals		Compared to 2021 (YOY)		Compared to 2019		
	Jun 2022	Jun 2021	Actual Change	Percent Change	Jun 2019	Actual Change	Percent Change	YTD 2022	YTD 2021	Actual Change	Percent Change	YTD 2019	Actual Change	Percent Change
Airline														
Allegiant Air	43,038	45,199	-2,161	-4.8%	45,333	-2,295	-5.1%	147,467	134,841	12,626	9.4%	151,960	-4,493	-3.0%
Miami Air	-	-	-	-	-	-	-	-	-	-	-	775	-775	-100.0%
Sun Country	-	-	-	-	-	-	-	355	122	233	191.0%	151	204	135.1%
Other Charters	-	-	-	-	237	-237	-100.0%	-	839	-839	-100.0%	1,922	-1,922	-100.0%
<b>AIRPORT TOTALS</b>	<b>43,038</b>	<b>45,199</b>	<b>-2,161</b>	<b>-4.8%</b>	<b>45,570</b>	<b>-2,532</b>	<b>-5.6%</b>	<b>147,822</b>	<b>135,802</b>	<b>12,020</b>	<b>8.9%</b>	<b>154,808</b>	<b>-6,986</b>	<b>-4.5%</b>
CARGO	Total Cargo (Freight and Mail) - Monthly							Total Cargo (Freight and Mail) - Year-To-Date						
	Totals		Compared to 2021 (YOY)		Compared to 2019			Totals		Compared to 2021 (YOY)		Compared to 2019		
	Jun 2022	Jun 2021	Actual Change	Percent Change	Jun 2019	Actual Change	Percent Change	YTD 2022	YTD 2021	Actual Change	Percent Change	YTD 2019	Actual Change	Percent Change
Airline														
AirBridgeCargo	-	-	-	-	1,002,217	-1,002,217	-100.0%	-	-	-	-	9,513,829	-9,513,829	-100.0%
Asiana	-	-	-	-	-	-	-	-	-	-	-	-	-	-
Cargolux	4,744,855	6,472,718	-1,727,863	-26.7%	3,162,752	1,582,103	50.0%	23,731,110	26,294,395	-2,563,285	-9.7%	19,800,073	3,931,037	19.9%
Cathay Pacific	973,969	1,096,116	-122,147	-11.1%	1,581,669	-607,700	-38.4%	6,531,529	3,661,335	2,870,194	78.4%	10,787,503	-4,255,974	-39.5%
China Airlines	-	-	-	-	1,385,771	-1,385,771	-100.0%	-	-	-	-	7,151,655	-7,151,655	-100.0%
Emirates	788,074	5,626,530	-4,838,456	-86.0%	2,125,031	-1,336,957	-62.9%	12,121,048	22,019,657	-9,898,609	-45.0%	14,310,586	-2,189,538	-15.3%
Etihad	-	-	-	-	1,256,051	-1,256,051	-100.0%	-	662,381	-662,381	-100.0%	12,273,140	-12,273,140	-100.0%
FedEx	6,464,502	7,177,983	-713,481	-9.9%	6,644,997	-180,495	-2.7%	36,024,625	38,901,681	-2,877,056	-7.4%	42,423,859	-6,399,234	-15.1%
Korean Air	2,141,140	3,858,921	-1,717,781	-44.5%	-	2,141,140	-	17,332,065	20,368,094	-3,036,029	-14.9%	-	17,332,065	-
UPS	2,215,685	2,396,359	-180,674	-7.5%	2,266,225	-50,540	-2.2%	12,623,990	13,172,186	-548,196	-4.2%	13,026,533	-402,543	-3.1%
Other Cargo Charters - Domestic	33,805	21,801	12,004	55.1%	297,484	-263,679	-88.6%	249,715	151,960	97,755	64.3%	1,663,233	-1,413,518	-85.0%
Other Cargo Charters - International	5,501,785	5,371,806	129,979	2.4%	-	5,501,785	-	24,924,757	34,752,589	-9,827,832	-28.3%	6,599,728	18,325,029	277.7%
<b>AIRPORT TOTALS</b>	<b>22,863,815</b>	<b>32,022,234</b>	<b>-9,158,419</b>	<b>-28.6%</b>	<b>19,722,196</b>	<b>3,141,619</b>	<b>15.9%</b>	<b>133,538,839</b>	<b>159,984,278</b>	<b>-26,445,439</b>	<b>-16.5%</b>	<b>137,550,138</b>	<b>-4,011,299</b>	<b>-2.9%</b>
TOTAL DOMESTIC	8,713,992	9,596,143	-882,151	-9.2%	9,208,706	-494,714	-5.4%	48,896,330	52,225,827	-3,329,497	-6.4%	57,113,625	-8,215,295	-14.4%
TOTAL INTERNATIONAL	14,149,823	22,426,091	-8,276,268	-36.9%	10,513,490	3,636,333	34.6%	84,640,509	107,758,451	-23,117,942	-21.5%	80,436,513	4,203,996	5.2%
<b>AIRPORT TOTALS</b>	<b>22,863,815</b>	<b>32,022,234</b>	<b>-9,158,419</b>	<b>-28.6%</b>	<b>19,722,196</b>	<b>3,141,619</b>	<b>15.9%</b>	<b>133,538,839</b>	<b>159,984,278</b>	<b>-26,445,439</b>	<b>-16.5%</b>	<b>137,550,138</b>	<b>-4,011,299</b>	<b>-2.9%</b>
AIRCRAFT OPERATIONS	Actual Landing Operations - Monthly							Actual Landing Operations - Year to Date						
	Totals		Compared to 2021 (YOY)		Compared to 2019			Totals		Compared to 2021 (YOY)		Compared to 2019		
	Jun 2022	Jun 2021	Actual Change	Percent Change	Jun 2019	Actual Change	Percent Change	YTD 2022	YTD 2021	Actual Change	Percent Change	YTD 2019	Actual Change	Percent Change
Airline														
Allegiant Air	138	166	-28	-16.9%	154	-16	-10.4%	491	556	-65	-11.7%	520	-29	-5.6%
Miami Air	-	-	-	-	-	-	-	-	-	-	-	6	-6	-100.0%
Sun Country	-	-	-	-	-	-	-	2	2	-	0.0%	1	1	100.0%
Other Charters	-	-	-	-	1	-1	-100.0%	-	8	-8	-100.0%	26	-26	-100.0%
<b>PASSENGER OPERATIONS TOTALS</b>	<b>138</b>	<b>166</b>	<b>-28</b>	<b>-16.9%</b>	<b>155</b>	<b>-17</b>	<b>-11.0%</b>	<b>493</b>	<b>566</b>	<b>-73</b>	<b>-12.9%</b>	<b>553</b>	<b>-60</b>	<b>-10.8%</b>
Asiana	-	-	-	-	8	-8	-100.0%	-	-	-	-	34	-34	-100.0%
Cargolux	16	21	-5	-23.8%	17	-1	-5.9%	86	94	-8	-8.5%	97	-11	-11.3%
Cathay Pacific	11	8	3	37.5%	15	-4	-26.7%	44	30	14	46.7%	94	-50	-53.2%
China Airlines	-	-	-	-	9	-9	-100.0%	-	-	-	-	50	-50	-100.0%
Emirates	6	42	-36	-85.7%	15	-9	-60.0%	120	185	-65	-35.1%	90	30	33.3%
Etihad	-	-	-	-	6	-6	-100.0%	-	5	-5	-100.0%	58	-58	-100.0%
FedEx	145	140	5	3.6%	134	11	8.2%	754	769	-15	-2.0%	825	-71	-8.6%
Korean Air	29	43	-14	-32.6%	-	29	-	208	223	-15	-6.7%	-	208	-
UPS	29	26	3	11.5%	42	-13	-31.0%	158	156	2	1.3%	254	-96	-37.8%
Other Cargo Charters - Domestic	86	64	22	34.4%	53	33	62.3%	438	415	23	5.5%	310	128	41.3%
Other Cargo Charters - International	37	35	2	5.7%	-	37	-	187	189	-2	-1.1%	32	155	484.4%
<b>CARGO OPERATIONS TOTALS</b>	<b>359</b>	<b>379</b>	<b>-20</b>	<b>-5.3%</b>	<b>299</b>	<b>60</b>	<b>20.1%</b>	<b>1,995</b>	<b>2,066</b>	<b>-71</b>	<b>-3.4%</b>	<b>1,844</b>	<b>151</b>	<b>8.2%</b>
<b>AIRPORT TOTALS</b>	<b>497</b>	<b>545</b>	<b>-48</b>	<b>-8.8%</b>	<b>454</b>	<b>43</b>	<b>9.5%</b>	<b>2,488</b>	<b>2,632</b>	<b>-144</b>	<b>-5.5%</b>	<b>2,397</b>	<b>91</b>	<b>3.8%</b>

Notes: Due to the COVID-19 pandemic that has impacted traffic since 1Q2020, 2019 data is noted here for baseline comparisons

# RICKENBACKER INTERNATIONAL AIRPORT

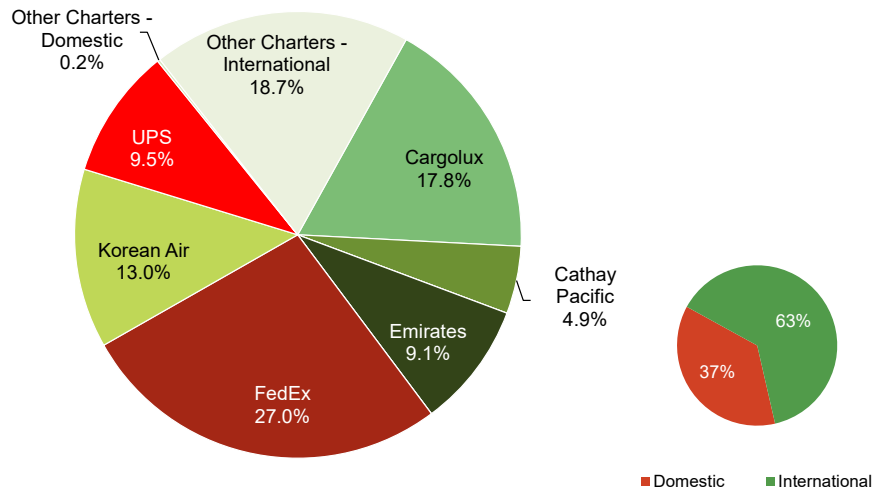
June 2022

## Monthly Cargo by Weights



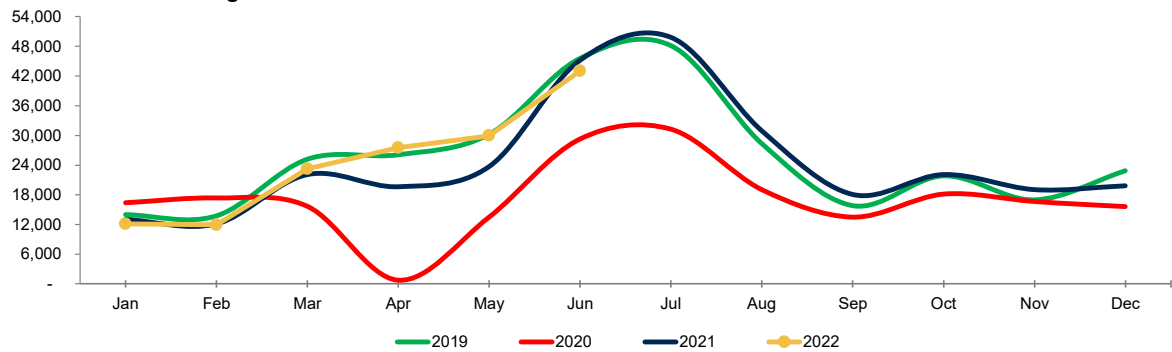
Note: Figures may not add up to 100% due to rounding

## Year to Date Cargo by Weights



Note: Figures may not add up to 100% due to rounding

## Total Passengers



Year	Jan	Feb	Mar	Apr	May	Jun	Jul	Aug	Sep	Oct	Nov	Dec	Total	Growth
2019	13,969	13,763	25,190	26,115	30,201	45,570	48,160	28,369	15,796	21,818	16,981	22,848	308,780	0.5%
2020	16,408	17,366	15,678	739	13,491	29,284	31,242	19,071	13,498	18,123	16,623	15,637	207,160	-32.9%
2021	13,016	12,126	22,110	19,655	23,696	45,199	49,810	30,952	18,048	22,114	19,029	19,829	295,584	42.7%
2022	12,115	11,934	23,272	27,520	29,943	43,038							147,822	
22 vs. 21	-6.9%	-1.6%	5.3%	40.0%	26.4%	-4.8%								YE Peak Month
22 vs. 19	-13.3%	-13.3%	-7.6%	5.4%	-0.9%	-5.6%								YE Lowest Month



# COMBINED AIRPORTS TRAFFIC REPORT

June 2022

7/26/2022

PASSENGERS	Total Passengers - Monthly							Total Passengers - Year to Date						
	Compared to 2021 (YOY)				Compared to 2019			Compared to 2021 (YOY)				Compared to 2019		
	Jun 2022	Jun 2021	Actual Change	Percent Change	Jun 2019	Actual Change	Percent Change	YTD 2022	YTD 2021	Actual Change	Percent Change	YTD 2019	Actual Change	Percent Change
Airports														
John Glenn International	692,343	575,626	116,717	20.3%	783,831	-91,488	-11.7%	3,572,739	2,300,980	1,271,759	55.3%	4,206,269	-633,530	-15.1%
Rickenbacker International	43,038	45,199	-2,161	-4.8%	45,570	-2,532	-5.6%	147,822	135,802	12,020	8.9%	154,808	-6,986	-4.5%
<b>AIRPORT TOTALS</b>	<b>735,381</b>	<b>620,825</b>	<b>114,556</b>	<b>18.5%</b>	<b>829,401</b>	<b>-94,020</b>	<b>-11.3%</b>	<b>3,720,561</b>	<b>2,436,782</b>	<b>1,283,779</b>	<b>52.7%</b>	<b>4,361,077</b>	<b>-640,516</b>	<b>-14.7%</b>
CARGO	Total Cargo (Freight and Mail) - Monthly							Total Cargo (Freight and Mail) - Year-To-Date						
	Compared to 2021 (YOY)				Compared to 2019			Compared to 2021 (YOY)				Compared to 2019		
	Jun 2022	Jun 2021	Actual Change	Percent Change	Jun 2019	Actual Change	Percent Change	YTD 2022	YTD 2021	Actual Change	Percent Change	YTD 2019	Actual Change	Percent Change
Airports														
John Glenn International	717,642	796,096	-78,454	-9.9%	782,029	-64,387	-8.2%	4,692,252	4,028,230	664,022	16.5%	4,972,779	-280,527	-5.6%
Rickenbacker International	22,863,815	32,022,234	-9,158,419	-28.6%	19,722,196	3,141,619	15.9%	133,538,839	159,984,278	-26,445,439	-16.5%	137,550,138	-4,011,299	-2.9%
<b>AIRPORT TOTALS</b>	<b>23,581,457</b>	<b>32,818,330</b>	<b>-9,236,873</b>	<b>-28.1%</b>	<b>20,504,225</b>	<b>3,077,232</b>	<b>15.0%</b>	<b>138,231,091</b>	<b>164,012,508</b>	<b>-25,781,417</b>	<b>-15.7%</b>	<b>142,522,917</b>	<b>-4,291,826</b>	<b>-3.0%</b>
AIRCRAFT OPERATIONS	Actual Landing Operations - Monthly							Actual Landing Operations - Year to Date						
	Compared to 2021 (YOY)				Compared to 2019			Compared to 2021 (YOY)				Compared to 2019		
	Jun 2022	Jun 2021	Actual Change	Percent Change	Jun 2019	Actual Change	Percent Change	YTD 2022	YTD 2021	Actual Change	Percent Change	YTD 2019	Actual Change	Percent Change
Airports														
John Glenn International	3,432	2,932	500	17.1%	4,380	-948	-21.6%	20,160	13,829	6,331	45.8%	25,093	-4,933	-19.7%
Rickenbacker International	497	545	-48	-8.8%	454	43	9.5%	2,488	2,632	-144	-5.5%	2,397	91	3.8%
<b>AIRPORT TOTALS</b>	<b>3,929</b>	<b>3,477</b>	<b>452</b>	<b>13.0%</b>	<b>4,834</b>	<b>-905</b>	<b>-18.7%</b>	<b>22,648</b>	<b>16,461</b>	<b>6,187</b>	<b>37.6%</b>	<b>27,490</b>	<b>-4,842</b>	<b>-17.6%</b>

Notes: Due to the COVID-19 pandemic that has impacted traffic since 1Q2020, 2019 data is noted here for baseline comparisons

