



MONTHLY STATISTICS REPORT

May 2022

Report compiled from self-reported airline statistics

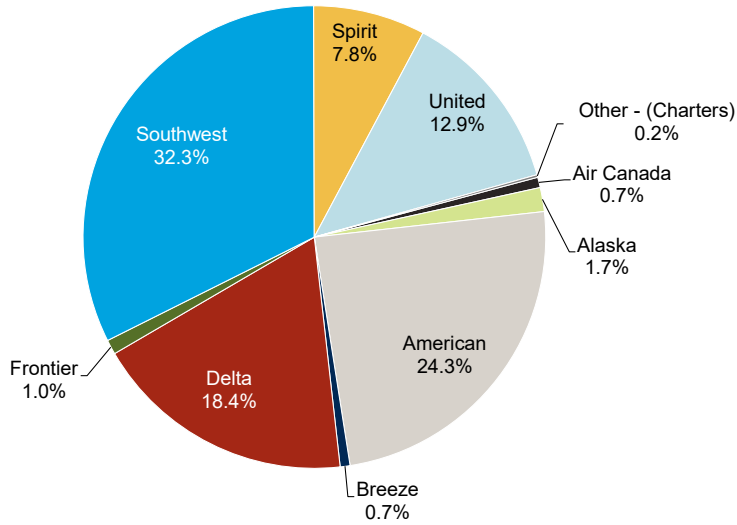


COLUMBUS
REGIONAL AIRPORT AUTHORITY

JOHN GLENN COLUMBUS INTERNATIONAL AIRPORT

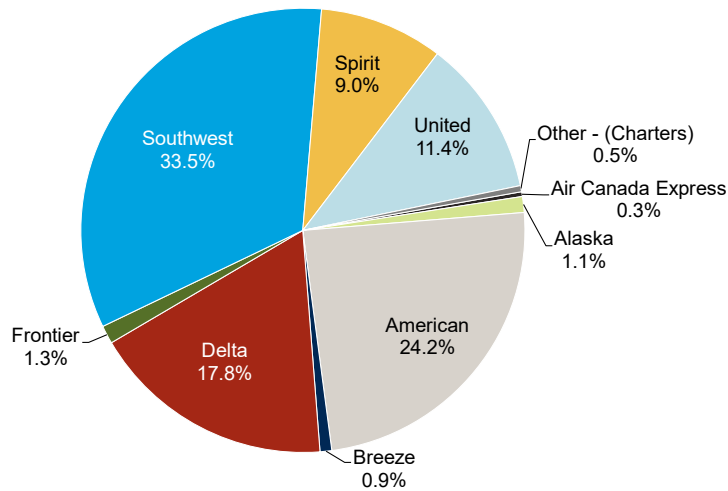
May 2022

Monthly by Passengers



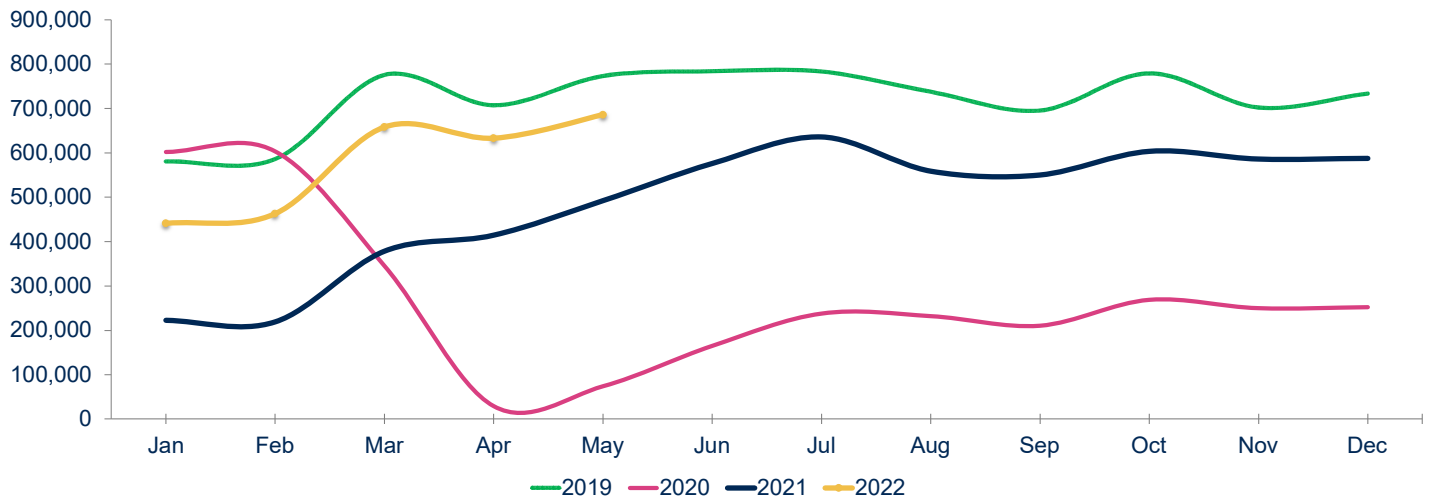
Notes:
Figures may not add up to 100% due to rounding

Year to Date by Passengers



Notes:
Figures may not add up to 100% due to rounding

Total Passengers



Year	Jan	Feb	Mar	Apr	May	Jun	Jul	Aug	Sep	Oct	Nov	Dec	Total	Growth
2019	580,704	586,025	775,533	707,185	772,991	783,831	783,122	737,440	695,409	779,088	702,070	733,710	8,637,108	6.1%
2020	602,022	603,467	345,418	28,943	73,769	164,700	237,756	232,096	210,233	268,914	249,522	252,287	3,269,127	-62.2%
2021	222,576	218,588	378,159	413,942	492,089	575,626	635,429	558,762	550,019	603,585	585,811	587,736	5,822,322	78.1%
2022	440,753	462,587	658,147	633,049	685,860								2,880,396	

22 vs. 21: 98.0% (Jan), 111.6% (Feb), 74.0% (Mar), 52.9% (Apr), 39.4% (May)
 22 vs. 19: -24.1% (Jan), -21.1% (Feb), -15.1% (Mar), -10.5% (Apr), -11.3% (May)

YE Peak Month
YE Lowest Month

RICKENBACKER INTERNATIONAL AIRPORT

May 2022

6/28/2022

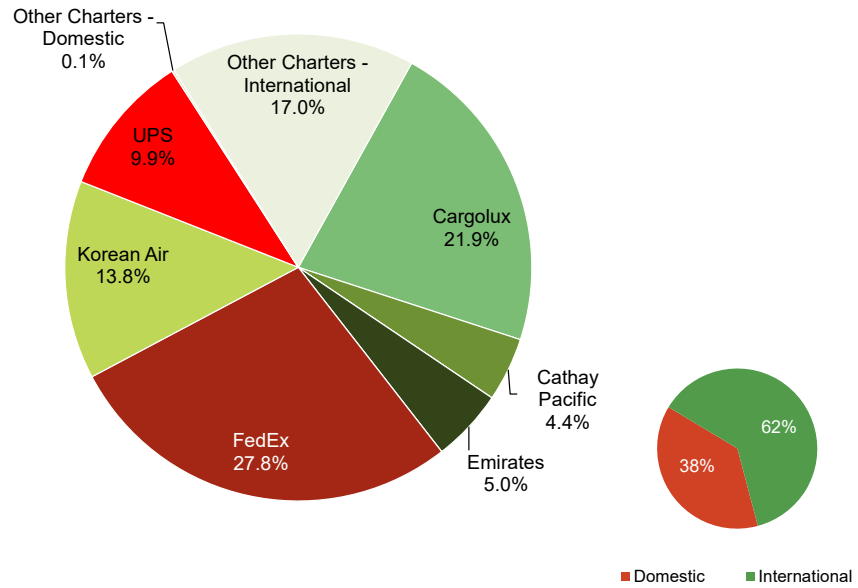
PASSENGERS	Total Passengers - Monthly							Total Passengers - Year to Date								
	Totals		Compared to 2021 (YOY)			Compared to 2019			Totals		Compared to 2021 (YOY)			Compared to 2019		
	May 2022	May 2021	Actual Change	Percent Change	May 2019	Actual Change	Percent Change	YTD 2022	YTD 2021	Actual Change	Percent Change	YTD 2019	Actual Change	Percent Change		
Allegiant Air	29,943	23,574	6,369	27.0%	30,173	-230	-0.8%	104,429	89,642	14,787	16.5%	106,627	-2,198	-2.1%		
Miami Air	-	-	-	-	-	-	-	-	-	-	-	775	-775	-100.0%		
Sun Country	-	122	-122	-100.0%	-	-	-	355	122	233	191.0%	151	204	135.1%		
Other Charters	-	-	-	-	28	-28	-100.0%	-	839	-839	-100.0%	1,685	-1,685	-100.0%		
AIRPORT TOTALS	29,943	23,696	6,247	26.4%	30,201	-258	-0.9%	104,784	90,603	14,181	15.7%	109,238	-4,454	-4.1%		
CARGO	Total Cargo (Freight and Mail) - Monthly							Total Cargo (Freight and Mail) - Year-To-Date								
	Totals		Compared to 2021 (YOY)			Compared to 2019			Totals		Compared to 2021 (YOY)			Compared to 2019		
	May 2022	May 2021	Actual Change	Percent Change	May 2019	Actual Change	Percent Change	YTD 2022	YTD 2021	Actual Change	Percent Change	YTD 2019	Actual Change	Percent Change		
AirBridgeCargo	-	-	-	-	2,440,116	-2,440,116	-100.0%	-	-	-	-	8,511,612	-8,511,612	-100.0%		
Asiana	-	-	-	-	-	-	-	-	-	-	-	-	-	-		
Cargolux	4,732,860	4,995,598	-262,738	-5.3%	2,498,351	2,234,609	89.4%	18,986,255	19,821,677	-835,422	-4.2%	16,637,321	2,348,934	14.1%		
Cathay Pacific	955,049	751,690	203,359	27.1%	1,929,739	-974,690	-50.5%	5,557,560	2,565,219	2,992,341	116.7%	9,205,834	-3,648,274	-39.6%		
China Airlines	-	-	-	-	1,335,205	-1,335,205	-100.0%	-	-	-	-	5,765,884	-5,765,884	-100.0%		
Emirates	1,086,604	4,530,712	-3,444,108	-76.0%	1,806,358	-719,754	-39.8%	11,332,974	16,393,127	-5,060,153	-30.9%	12,185,555	-852,581	-7.0%		
Etihad	-	-	-	-	2,253,479	-2,253,479	-100.0%	-	662,381	-662,381	-100.0%	11,017,089	-11,017,089	-100.0%		
FedEx	5,987,235	7,047,569	-1,060,334	-15.0%	7,430,041	-1,442,806	-19.4%	29,560,123	31,723,698	-2,163,575	-6.8%	35,778,862	-6,218,739	-17.4%		
Korean Air	2,966,229	4,037,827	-1,071,598	-26.5%	-	2,966,229	-	15,190,925	16,509,173	-1,318,248	-8.0%	-	15,190,925	-		
UPS	2,136,945	2,187,137	-50,192	-2.3%	2,404,701	-267,756	-11.1%	10,408,305	10,775,827	-367,522	-3.4%	10,760,308	-352,003	-3.3%		
Other Cargo Charters - Domestic	30,544	24,166	6,378	26.4%	291,774	-261,230	-89.5%	215,910	130,159	85,751	65.9%	1,365,749	-1,149,839	-84.2%		
Other Cargo Charters - International	3,667,452	6,329,344	-2,661,892	-42.1%	-	3,667,452	-	19,422,972	29,380,783	-9,957,811	-33.9%	6,599,728	12,823,244	194.3%		
AIRPORT TOTALS	21,562,918	29,904,043	-8,341,125	-27.9%	22,389,764	-826,846	-3.7%	110,675,024	127,962,044	-17,287,020	-13.5%	117,827,942	-7,152,918	-6.1%		
TOTAL DOMESTIC	8,154,724	9,258,872	-1,104,148	-11.9%	10,126,516	-1,971,792	-19.5%	40,184,338	42,629,684	-2,445,346	-5.7%	47,904,919	-7,720,581	-16.1%		
TOTAL INTERNATIONAL	13,408,194	20,645,171	-7,236,977	-35.1%	12,263,248	1,144,946	9.3%	70,490,686	85,332,360	-14,841,674	-17.4%	69,923,023	567,663	0.8%		
AIRPORT TOTALS	21,562,918	29,904,043	-8,341,125	-27.9%	22,389,764	-826,846	-3.7%	110,675,024	127,962,044	-17,287,020	-13.5%	117,827,942	-7,152,918	-6.1%		
AIRCRAFT OPERATIONS	Actual Landing Operations - Monthly							Actual Landing Operations - Year to Date								
	Totals		Compared to 2021 (YOY)			Compared to 2019			Totals		Compared to 2021 (YOY)			Compared to 2019		
	May 2022	May 2021	Actual Change	Percent Change	May 2019	Actual Change	Percent Change	YTD 2022	YTD 2021	Actual Change	Percent Change	YTD 2019	Actual Change	Percent Change		
Allegiant Air	101	91	10	11.0%	105	-4	-3.8%	353	390	-37	-9.5%	366	-13	-3.6%		
Miami Air	-	-	-	-	-	-	-	-	-	-	-	6	-6	-100.0%		
Sun Country	-	2	-2	-100.0%	-	-	-	2	2	-	0.0%	1	1	100.0%		
Other Charters	-	-	-	-	10	-10	-100.0%	-	8	-8	-100.0%	25	-25	-100.0%		
PASSENGER OPERATIONS TOTALS	101	93	8	8.6%	115	-14	-12.2%	355	400	-45	-11.3%	398	-43	-10.8%		
AirBridgeCargo	-	-	-	-	8	-8	-100.0%	-	-	-	-	26	-26	-100.0%		
Asiana	-	-	-	-	-	-	-	-	-	-	-	-	-	-		
Cargolux	17	17	-	0.0%	17	-	0.0%	70	73	-3	-4.1%	80	-10	-12.5%		
Cathay Pacific	8	5	3	60.0%	16	-8	-50.0%	33	22	11	50.0%	79	-46	-58.2%		
China Airlines	-	-	-	-	10	-10	-100.0%	-	-	-	-	41	-41	-100.0%		
Emirates	6	36	-30	-83.3%	15	-9	-60.0%	114	143	-29	-20.3%	75	39	52.0%		
Etihad	-	-	-	-	12	-12	-100.0%	-	5	-5	-100.0%	52	-52	-100.0%		
FedEx	132	133	-1	-0.8%	144	-12	-8.3%	609	629	-20	-3.2%	691	-82	-11.9%		
Korean Air	35	39	-4	-10.3%	-	35	-	179	180	-1	-0.6%	-	179	-		
UPS	27	25	2	8.0%	43	-16	-37.2%	129	130	-1	-0.8%	212	-83	-39.2%		
Other Cargo Charters - Domestic	95	63	32	50.8%	64	31	48.4%	352	351	1	0.3%	257	95	37.0%		
Other Cargo Charters - International	29	32	-3	-9.4%	-	29	-	150	154	-4	-2.6%	32	118	368.8%		
CARGO OPERATIONS TOTALS	349	350	-1	-0.3%	329	20	6.1%	1,636	1,687	-51	-3.0%	1,545	91	5.9%		
AIRPORT TOTALS	450	443	7	1.6%	444	6	1.4%	1,991	2,087	-96	-4.6%	1,943	48	2.5%		

Notes: Due to the COVID-19 pandemic that has impacted traffic since 1Q2020, 2019 data is noted here for baseline comparisons

RICKENBACKER INTERNATIONAL AIRPORT

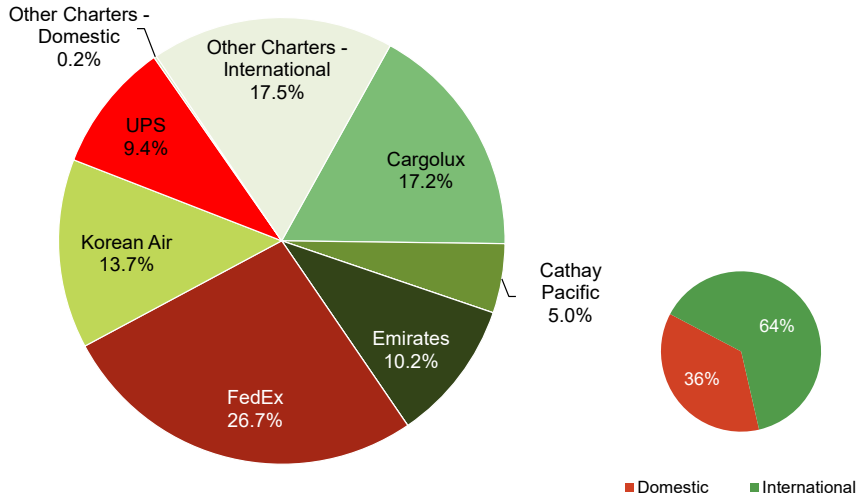
May 2022

Monthly Cargo by Weights



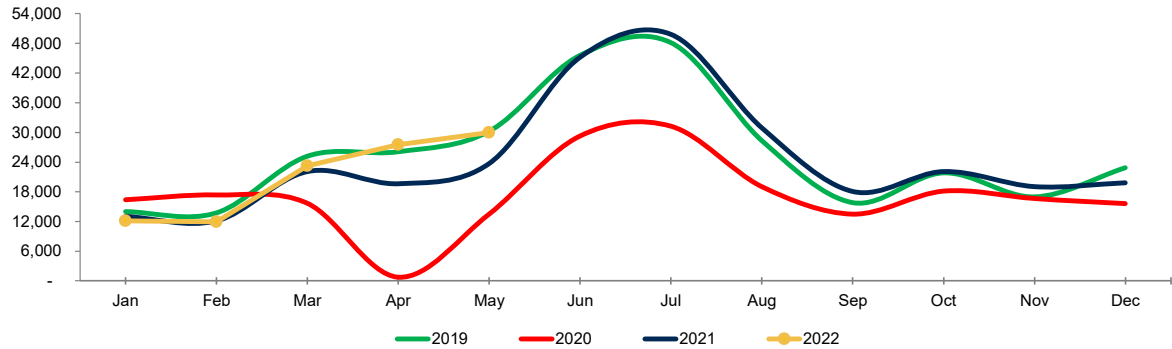
Note: Figures may not add up to 100% due to rounding

Year to Date Cargo by Weights



Note: Figures may not add up to 100% due to rounding

Total Passengers



Year	Jan	Feb	Mar	Apr	May	Jun	Jul	Aug	Sep	Oct	Nov	Dec	Total	Growth
2019	13,969	13,763	25,190	26,115	30,201	45,570	48,160	28,369	15,796	21,818	16,981	22,848	308,780	0.5%
2020	16,408	17,366	15,678	739	13,491	29,284	31,242	19,071	13,498	18,123	16,623	15,637	207,160	-32.9%
2021	13,016	12,126	22,110	19,655	23,696	45,199	49,810	30,952	18,048	22,114	19,029	19,829	295,584	42.7%
2022	12,115	11,934	23,272	27,520	29,943								104,784	

22 vs. 21	-6.9%	-1.6%	5.3%	40.0%	26.4%										YE Peak Month
22 vs. 19	-13.3%	-13.3%	-7.6%	5.4%	-0.9%										YE Lowest Month

COMBINED AIRPORTS TRAFFIC REPORT

May 2022

6/28/2022

PASSENGERS	Total Passengers - Monthly							Total Passengers - Year to Date						
	Compared to 2021 (YOY)				Compared to 2019			Compared to 2021 (YOY)				Compared to 2019		
	May 2022	May 2021	Actual Change	Percent Change	May 2019	Actual Change	Percent Change	YTD 2022	YTD 2021	Actual Change	Percent Change	YTD 2019	Actual Change	Percent Change
Airports														
John Glenn International	685,860	492,089	193,771	39.4%	772,991	-87,131	-11.3%	2,880,396	1,725,354	1,155,042	66.9%	3,422,438	-542,042	-15.8%
Rickenbacker International	29,943	23,696	6,247	26.4%	30,201	-258	-0.9%	104,784	90,603	14,181	15.7%	109,238	-4,454	-4.1%
AIRPORT TOTALS	715,803	515,785	200,018	38.8%	803,192	-87,389	-10.9%	2,985,180	1,815,957	1,169,223	64.4%	3,531,676	-546,496	-15.5%
CARGO	Total Cargo (Freight and Mail) - Monthly							Total Cargo (Freight and Mail) - Year-To-Date						
	Compared to 2021 (YOY)				Compared to 2019			Compared to 2021 (YOY)				Compared to 2019		
	May 2022	May 2021	Actual Change	Percent Change	May 2019	Actual Change	Percent Change	YTD 2022	YTD 2021	Actual Change	Percent Change	YTD 2019	Actual Change	Percent Change
Airports														
John Glenn International	728,562	740,300	-11,738	-1.6%	875,396	-146,834	-16.8%	3,974,610	3,232,134	742,476	23.0%	4,190,750	-216,140	-5.2%
Rickenbacker International	21,562,918	29,904,043	-8,341,125	-27.9%	22,389,764	-826,846	-3.7%	110,675,024	127,962,044	-17,287,020	-13.5%	117,827,942	-7,152,918	-6.1%
AIRPORT TOTALS	22,291,480	30,644,343	-8,352,863	-27.3%	23,265,160	-973,680	-4.2%	114,649,634	131,194,178	-16,544,544	-12.6%	122,018,692	-7,369,058	-6.0%
AIRCRAFT OPERATIONS	Actual Landing Operations - Monthly							Actual Landing Operations - Year to Date						
	Compared to 2021 (YOY)				Compared to 2019			Compared to 2021 (YOY)				Compared to 2019		
	May 2022	May 2021	Actual Change	Percent Change	May 2019	Actual Change	Percent Change	YTD 2022	YTD 2021	Actual Change	Percent Change	YTD 2019	Actual Change	Percent Change
Airports														
John Glenn International	3,572	2,643	929	35.1%	4,430	-858	-19.4%	16,728	10,897	5,831	53.5%	20,713	-3,985	-19.2%
Rickenbacker International	450	443	7	1.6%	444	6	1.4%	1,991	2,087	-96	-4.6%	1,943	48	2.5%
AIRPORT TOTALS	4,022	3,086	936	30.3%	4,874	-852	-17.5%	18,719	12,984	5,735	44.2%	22,656	-3,937	-17.4%

Notes: Due to the COVID-19 pandemic that has impacted traffic since 1Q2020, 2019 data is noted here for baseline comparisons

COLUMBUS REGIONAL AIRPORT AUTHORITY - JOHN GLENN COLUMBUS INTERNATIONAL AIRPORT

MONTHLY TRAFFIC REPORT

May 2022

6/28/2022

Operating Airline	Brand Airline	Terminal / Non-Term	Concourse	Sign / Non-Sign	Scheduled / Charter / Freight	Pax - Enplane	Pax - Deplane	Mail - Enplane	Mail - Deplane	Freight - Enplane	Freight - Deplane	Landings	Landed Weight
TERMINAL PASSENGER FLIGHT ACTIVITY: Scheduled and charter flights operating from the CMH terminal													
Terminal - Scheduled Passenger Flight Activity													
Air Canada Express - Jazz	Air Canada	Terminal	Concourse B	Signatory	Scheduled	2,994	1,988	-	-	-	-	78	3,666,000
Alaska Airlines	Alaska	Terminal	Concourse C	Signatory	Scheduled	5,820	5,723	-	-	19,923	3,293	35	5,399,100
American Airlines	American	Terminal	Concourse B	Signatory	Scheduled	31,048	31,324	2,810	47,009	6,007	6,032	292	31,087,050
American - Envoy Air	American	Terminal	Concourse B	Signatory	Scheduled	12,130	11,893	-	-	343	346	179	13,328,930
American - Mesa	American	Terminal	Concourse B	Signatory	Scheduled	-	-	-	-	-	-	-	-
American - Piedmont	American	Terminal	Concourse B	Signatory	Scheduled	98	85	-	-	-	-	2	87,300
American - PSA	American	Terminal	Concourse B	Signatory	Scheduled	8,778	8,430	-	-	193	315	129	9,469,200
American - Republic	American	Terminal	Concourse B	Signatory	Scheduled	30,515	29,401	-	-	3,112	1,179	481	35,955,510
American - Skywest	American	Terminal	Concourse B	Signatory	Scheduled	1,435	1,455	-	-	-	199	23	1,541,000
Breeze Airways	Breeze	Terminal	Concourse C	Signatory	Scheduled	2,335	2,369	-	-	-	-	43	3,923,757
Delta Air Lines	Delta	Terminal	Concourse C	Signatory	Scheduled	27,519	27,319	16,771	10,558	8,202	26,914	164	25,597,000
Delta Connection - Endeavor	Delta	Terminal	Concourse C	Signatory	Scheduled	56	44	-	-	-	-	1	75,100
Delta Connection - Republic	Delta	Terminal	Concourse C	Signatory	Scheduled	21,869	20,277	-	-	22	-	348	25,986,586
Delta Connection - Skywest	Delta	Terminal	Concourse C	Signatory	Scheduled	14,843	14,271	-	-	-	-	219	15,774,231
Frontier Airlines	Frontier	Terminal	Concourse C	Signatory	Scheduled	3,497	3,555	-	-	-	-	22	3,234,406
Southwest Airlines	Southwest	Terminal	Concourse A	Signatory	Scheduled	110,220	111,500	-	-	324,889	195,913	844	110,746,000
Spirit Airlines	Spirit	Terminal	Concourse B	Signatory	Scheduled	25,930	27,848	-	-	-	-	176	25,438,937
United Airlines	United	Terminal	Concourse B	Signatory	Scheduled	16,560	16,513	25,922	2,782	1,559	7,872	115	16,502,300
United Express - Air Wisconsin	United	Terminal	Concourse B	Signatory	Scheduled	237	228	-	-	-	-	5	235,000
United Express - CommuAir	United	Terminal	Concourse B	Signatory	Scheduled	3,559	3,567	-	-	-	-	79	3,476,000
United Express - GoJet	United	Terminal	Concourse B	Signatory	Scheduled	1,114	1,216	-	-	-	-	30	1,830,000
United Express - Mesa	United	Terminal	Concourse B	Signatory	Scheduled	2,815	2,741	-	-	-	-	38	2,850,000
United Express - Republic	United	Terminal	Concourse B	Signatory	Scheduled	15,196	14,467	-	-	-	-	226	16,654,622
United Express - Skywest	United	Terminal	Concourse B	Signatory	Scheduled	5,106	5,111	-	-	-	-	78	5,567,076
Terminal - Charter Passenger Flight Activity													
Air Canada Express - Jazz	Air Canada	Terminal	Concourse B	Signatory	Charter	-	-	-	-	-	-	-	-
Air Canada - Jetz	Air Canada	Terminal	Concourse B	Signatory	Charter	-	-	-	-	-	-	-	-
Allegiant Air	Allegiant	Terminal	Concourse C	Non-Signatory	Charter	-	-	-	-	-	-	-	-
American Airlines	American	Terminal	Concourse B	Signatory	Charter	-	-	-	-	-	-	-	-
Avianca Airlines	Avianca Airlines	Terminal	Concourse C	Non-Signatory	Charter	-	-	-	-	-	-	-	-
Delta Air Lines	Delta	Terminal	Concourse C	Signatory	Charter	-	-	-	-	-	-	-	-
Global Crossing Airlines	Global Crossing Airlines	Terminal	Concourse C	Non-Signatory	Charter	-	-	-	-	-	-	-	-
Miami Air	Miami Air	Terminal	Concourse C	Non-Signatory	Charter	-	-	-	-	-	-	-	-
Southwest Airlines	Southwest	Terminal	Concourse A	Signatory	Charter	-	-	-	-	-	-	-	-
Sun Country	Sun Country	Terminal	Concourse C	Non-Signatory	Charter	-	-	-	-	-	-	2	292,600
Swift Air	Swift Air	Terminal	Concourse C	Non-Signatory	Charter	-	-	-	-	-	-	-	-
Swift Air - Aviation Advantage	Swift Air - Aviation Advantage	Terminal	Concourse C	Non-Signatory	Charter	-	-	-	-	-	-	-	-
TAP Air Portugal	TAP Air Portugal	Terminal	Concourse C	Non-Signatory	Charter	-	-	-	-	-	-	-	-
Titan Airways	Titan Airways	Terminal	Concourse C	Non-Signatory	Charter	-	-	-	-	-	-	-	-
United Airlines	United	Terminal	Concourse B	Signatory	Charter	-	-	-	-	-	-	-	-
United Express - Mesa	United	Terminal	Concourse B	Signatory	Charter	-	-	-	-	-	-	-	-
VivaAerobus	VivaAerobus	Terminal	Concourse C	Non-Signatory	Charter	-	-	-	-	-	-	2	284,000
Xtra Airways	Xtra Airways	Terminal	Concourse C	Non-Signatory	Charter	-	-	-	-	-	-	-	-
NON-TERMINAL FLIGHT ACTIVITY: Flights operating at a location other than the CMH terminal													
Non-Terminal - Charter Passenger Flight Activity													
Advanced Air	Advanced Air	Non-Terminal	Non-Terminal	Non-Signatory	Charter	-	-	-	-	-	-	-	-
Air Canada Express - Jazz	Air Canada	Non-Terminal	Non-Terminal	Signatory	Charter	-	-	-	-	-	-	-	-
Air Canada - Jetz	Air Canada	Non-Terminal	Non-Terminal	Signatory	Charter	-	-	-	-	-	-	-	-
Alaska Airlines	Alaska	Non-Terminal	Non-Terminal	Signatory	Charter	-	-	-	-	-	-	-	-
Allegiant Air	Allegiant	Non-Terminal	Non-Terminal	Non-Signatory	Charter	-	-	-	-	-	-	-	-
Alliance Air Charter	Alliance Air Charter	Non-Terminal	Non-Terminal	Non-Signatory	Charter	-	-	-	-	-	-	-	-
American Airlines	American	Non-Terminal	Non-Terminal	Signatory	Charter	-	-	-	-	-	-	-	-
American - Envoy Air	American	Non-Terminal	Non-Terminal	Signatory	Charter	-	-	-	-	-	-	-	-
American - Republic	American	Non-Terminal	Non-Terminal	Signatory	Charter	-	-	-	-	-	-	-	-
Ameristar Jet Charter	Ameristar Jet Charter	Non-Terminal	Non-Terminal	Non-Signatory	Charter	-	-	-	-	-	-	-	-
Atlas Air	Atlas Air	Non-Terminal	Non-Terminal	Non-Signatory	Charter	-	-	-	-	-	-	-	-
Berry Aviation	Berry Aviation	Non-Terminal	Non-Terminal	Non-Signatory	Charter	-	-	-	-	-	-	-	-
Breeze Airways	Breeze	Non-Terminal	Non-Terminal	Non-Signatory	Charter	-	-	-	-	-	-	-	-
Cape Air	Cape Air	Non-Terminal	Non-Terminal	Non-Signatory	Charter	-	-	-	-	-	-	-	-
Castle Aviation	Castle Aviation	Non-Terminal	Non-Terminal	Non-Signatory	Charter	-	-	-	-	-	-	-	-
Central Air Express	Central Air Express	Non-Terminal	Non-Terminal	Non-Signatory	Charter	-	-	-	-	-	-	-	-
Contour Aviation	Contour Aviation	Non-Terminal	Non-Terminal	Non-Signatory	Charter	-	-	-	-	-	-	-	-
Delta Air Lines	Delta	Non-Terminal	Non-Terminal	Signatory	Charter	-	-	-	-	-	-	-	-
Delta Connection - Endeavor	Delta	Non-Terminal	Non-Terminal	Signatory	Charter	-	-	-	-	-	-	-	-
Elite Airways	Elite Airways	Non-Terminal	Non-Terminal	Signatory	Charter	-	-	-	-	-	-	-	-
Freight Runners Express	Freight Runners Express	Non-Terminal	Non-Terminal	Non-Signatory	Charter	-	-	-	-	-	-	-	-
Hillwood Airways	Hillwood Airways	Non-Terminal	Non-Terminal	Non-Signatory	Charter	-	-	-	-	-	-	-	-
IBC Airways	IBC Airways	Non-Terminal	Non-Terminal	Non-Signatory	Charter	-	-	-	-	-	-	-	-
IFL Group	IFL Group	Non-Terminal	Non-Terminal	Non-Signatory	Charter	-	-	-	-	-	-	-	-
Kaiser Air	Kaiser Air	Non-Terminal	Non-Terminal	Non-Signatory	Charter	-	-	-	-	-	-	-	-
Kalitta	Kalitta	Non-Terminal	Non-Terminal	Non-Signatory	Charter	3	3	-	-	-	-	4	61,200
Kalitta Charters II	Kalitta Charters II	Non-Terminal	Non-Terminal	Non-Signatory	Charter	-	-	-	-	-	-	-	-
Key Lime	Key Lime	Non-Terminal	Non-Terminal	Non-Signatory	Charter	-	-	-	-	-	-	-	-
Les Investissements Nolinor Inc.	Les Investissements Nolinor Inc.	Non-Terminal	Non-Terminal	Non-Signatory	Charter	-	-	-	-	-	-	-	-
Miami Air	Miami Air	Non-Terminal	Non-Terminal	Non-Signatory	Charter	-	-	-	-	-	-	-	-
National Airlines	National Airlines	Non-Terminal	Non-Terminal	Non-Signatory	Charter	-	-	-	-	-	-	-	-
Omni Air	Omni Air	Non-Terminal	Non-Terminal	Non-Signatory	Charter	-	-	-	-	-	-	-	-
Priority Air Charter	Priority Air Charter	Non-Terminal	Non-Terminal	Non-Signatory	Charter	-	-	-	-	-	-	-	-
Republic Airways	Republic Airways	Non-Terminal	Non-Terminal	Non-Signatory	Charter	-	-	-	-	-	-	-	-
Royal Air Freight	Royal Air Freight	Non-Terminal	Non-Terminal	Non-Signatory	Charter	-	-	-	-	-	-	-	-
RVR Aviation	RVR Aviation	Non-Terminal	Non-Terminal	Non-Signatory	Charter	-	-	-	-	-	-	-	-
Sierra Pacific	Sierra Pacific	Non-Terminal	Non-Terminal	Non-Signatory	Charter	74	-	-	-	-	-	1	110,000
Sierra WestPak West	Sierra WestPak West	Non-Terminal	Non-Terminal	Non-Signatory	Charter	-	-	-	-	-	-	-	-
Southwest Airlines	Southwest	Non-Terminal	Non-Terminal	Signatory	Charter	-	-	-	-	-	-	-	-
Sterling Airways	Sterling Airways	Non-Terminal	Non-Terminal	Non-Signatory	Charter	-	-	-	-	-	-	-	-
Sun Country	Sun Country	Non-Terminal	Non-Terminal	Non-Signatory	Charter	143	134	-	-	-	-	7	1,024,100
Swift Air	Swift Air	Non-Terminal	Non-Terminal	Non-Signatory	Charter	124	123	-	-	-	-	4	472,000
Swift Air - Aviation Advantage	Swift Air - Aviation Advantage	Non-Terminal	Non-Terminal	Non-Signatory	Charter	-	-	-	-	-	-	-	-
Titan Airways	Titan Airways	Non-Terminal	Non-Terminal	Non-Signatory	Charter	-	-	-	-	-	-	-	-
Ultimate Jet Charters	Ultimate Jet Charters	Non-Terminal	Non-Terminal	Non-Signatory	Charter	-	-	-	-	-	-	-	-
United Airlines	United	Non-Terminal	Non-Terminal	Signatory	Charter	-	-	-	-	-	-	-	-
United Express - Mesa	United	Non-Terminal	Non-Terminal	Signatory	Charter	-	-	-	-	-	-	-	-
Via Airlines	Via Airlines	Non-Terminal	Non-Terminal	Non-Signatory	Charter	-	-	-	-	-	-	-	-
VivaAerobus	VivaAerobus	Non-Terminal	Non-Terminal	Non-Signatory	Charter	-	-	-	-	-	-	-	-
Voyager Airways	Voyager Airways	Non-Terminal	Non-Terminal	Non-Signatory	Charter	-	-	-	-	-	-	-	-
World Atlantic Airlines	World Atlantic Airlines	Non-Terminal	Non-Terminal	Non-Signatory	Charter	-	-	-	-	-	-	-	-
Xtra Airways	Xtra Airways	Non-Terminal	Non-Terminal	Non-Signatory	Charter	-	-	-	-	-	-	-	-
Non-Terminal - Diversion / Ferry Flight Activity													
Air Canada Express - Jazz	Air Canada	Non-Terminal	Non-Terminal	Signatory	Diversion / Ferry	-	-	-	-	-	-	-	-
Alaska Airlines	Alaska	Non-Terminal	Non-Terminal	Signatory	Diversion / Ferry	-	-	-	-	-	-	-	-
American Airlines	American	Non-Terminal	Non-Terminal	Signatory	Diversion / Ferry	-	-	-	-	-	-	3	284,200
American - Envoy Air	American	Non-Terminal	Non-Terminal	Signatory	Diversion / Ferry	-	-	-	-	-	-	4	297,160
American - Mesa	American	Non-Terminal	Non-Terminal	Signatory	Diversion / Ferry	-	-	-	-	-	-	-	-
American - Piedmont	American	Non-Terminal	Non-Terminal	Signatory	Diversion / Ferry	-	-	-	-	-	-	-	-
American - PSA	American	Non-Terminal	Non-Terminal	Signatory	Diversion / Ferry	-	-	-	-	-	-	2	142,100
American - Republic	American	Non-Terminal	Non-Terminal	Signatory	Diversion / Ferry	-	-	-	-	-	-	16	1,199,200
American - Skywest	American	Non-Terminal	Non-Terminal	Signatory	Diversion / Ferry	-	-	-	-	-</			